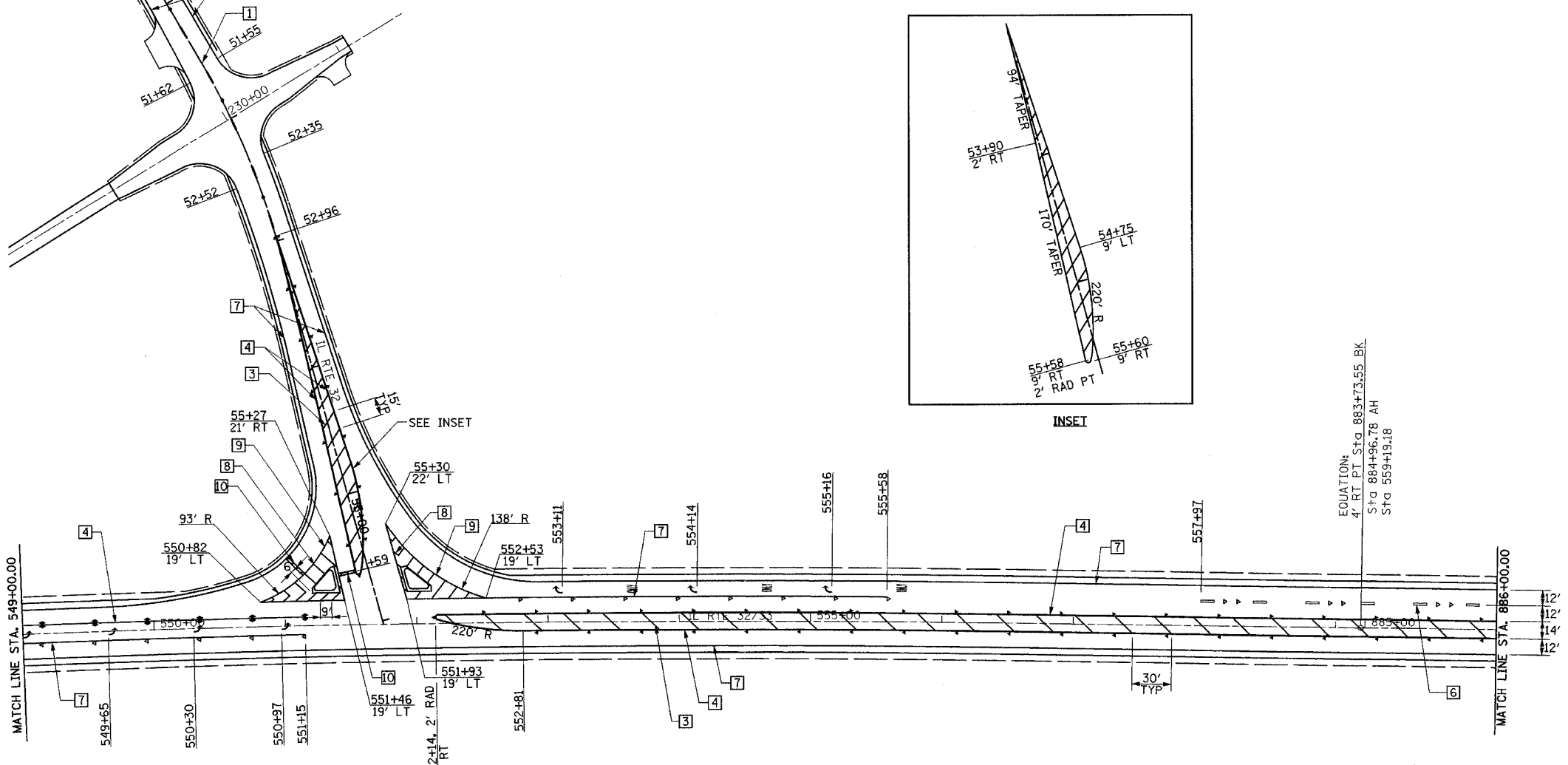
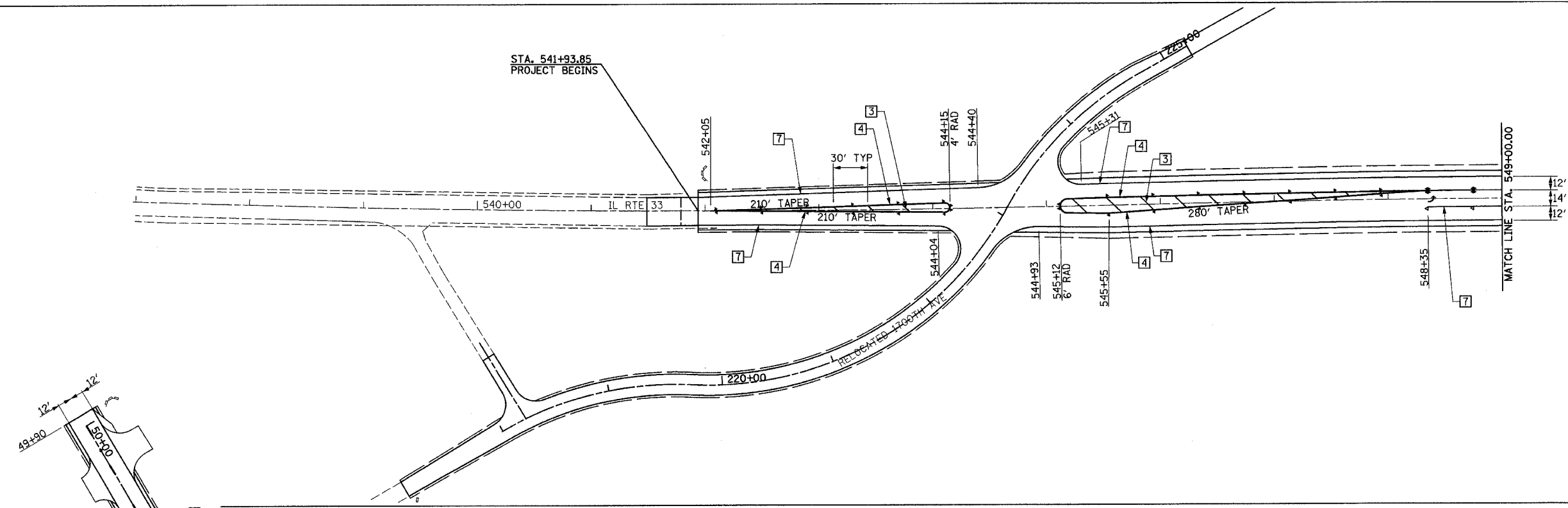
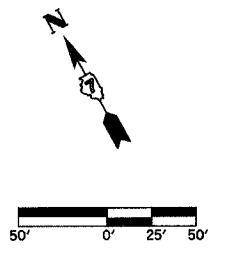


F.A.P. RTE.	SECTION	COUNTY	TOTAL SHEETS	SHEET NO.
774	107 WRS-2, L	EFFINGHAM	127	51
FED. ROAD DIST. NO.	ILLINOIS	FED. AID PROJECT		

CONTRACT NO. 74130



LEGEND

- RAISED REFL PAVT MKR AMBER BIDIRECTIONAL
- RAISED REFL PAVT MKR AMBER MONODIRECTIONAL
- RAISED REFL PAVT MKR CRYSTAL MONODIRECTIONAL
- ITEM [4] DOUBLE YELLOW (NARROW)
- ITEM [5] DOUBLE YELLOW (WIDE)

TYPICAL PAVEMENT MARKING LEGEND

- [1] 4" SKIP-DASH YELLOW
- [2] 4" SOLID YELLOW
- [3] 12" DIAGONAL YELLOW
- [4] 4" DOUBLE YELLOW NARROW
- [5] 4" DOUBLE YELLOW WIDE
- [6] 6" SKIP-DASH WHITE
- [7] 4" SOLID WHITE
- [8] 12" DIAGONAL WHITE
- [9] 6" SOLID WHITE
- [10] 24" STOP BAR WHITE

SEE STANDARDS 780001 & 781001 AND DISTRICT PAVEMENT MARKING DETAILS FOR ADDITIONAL DETAILS FOR PAVEMENT MARKING AND RAISED REFLECTIVE PAVEMENT MARKERS.

REVISIONS	
NAME	DATE

ILLINOIS DEPARTMENT OF TRANSPORTATION

PAVEMENT MARKING PLAN
SHEET 2 OF 5

DATE 8/02

DRAWN BY ASB
CHECKED BY SJK