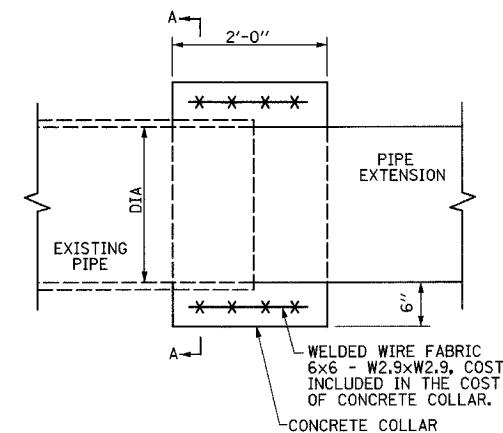
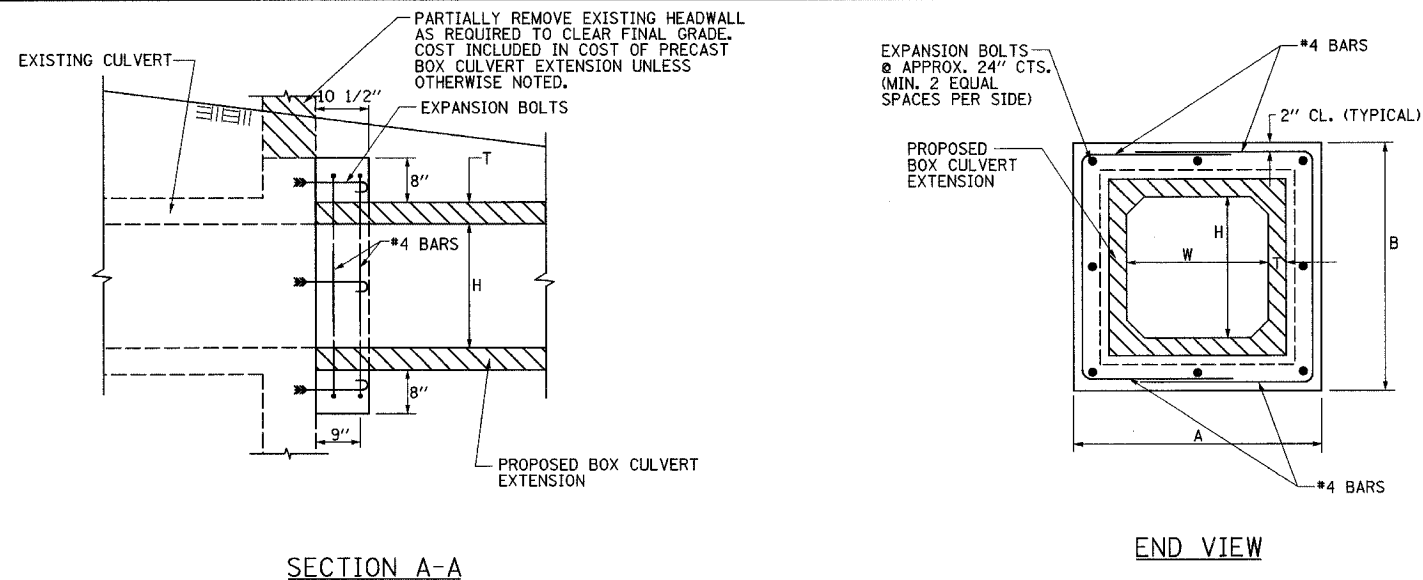
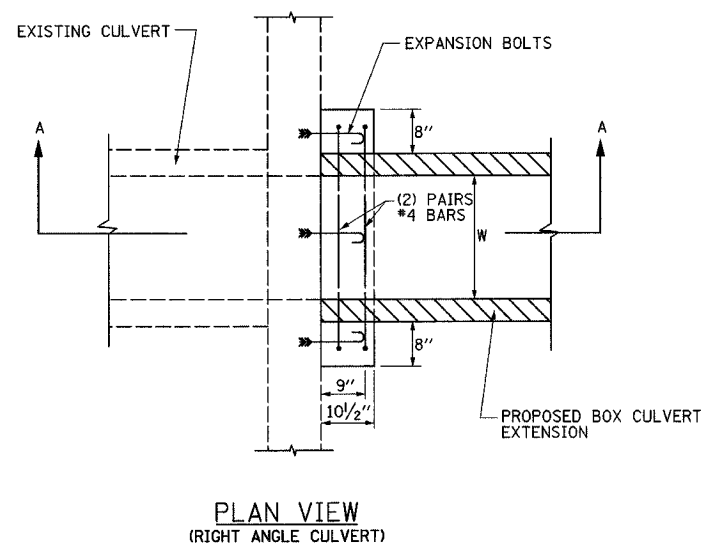


F.A.P. RTE.	SECTION	COUNTY	TOTAL SHEETS	SHEET NO.
774	107 WRS-2, L	EFFINGHAM	127	71
FED. ROAD DIST. NO.	ILLINOIS	FED. AID PROJECT		

CONTRACT NO. 74130

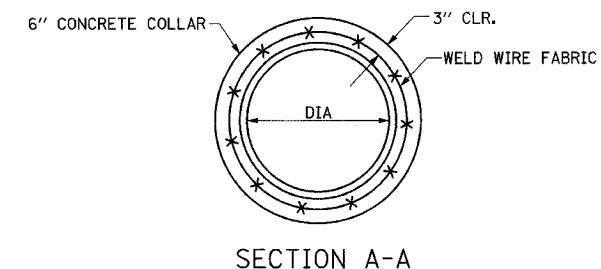


PLAN



PLAN VIEW
(RIGHT ANGLE CULVERT)

NOTE: EXPANSION BOLTS SHALL CONSIST OF SELF-DRILLING EXPANSION SHIELDS AND HOOKED BOLTS. HOOKED BOLTS SHALL EXTEND A MINIMUM OF 9" INTO THE NEW CONCRETE.



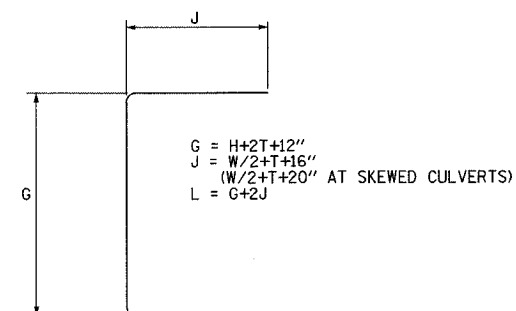
SECTION A-A

STATION	DIA (INCHES)	EXTENS LENGTH (FEET)	PRC FLARED END SECTION (EACH)	CONCRETE COLLAR * (CU YD)
RT/54+48.13	24	18	1	0.3
TOTAL				0.3

* THE COST OF CONCRETE COLLAR FOR PIPE CULVERT EXTENSION IS TO BE INCLUDED IN THE COST OF CONCRETE PIPE EXTENSION.

SIDE	STATION	CULVERT SIZE	EXTENSION LENGTH FEET	CULVERT NO.	DESIGN FILL HEIGHT FEET	BOX CULVERT END SECTION EACH	SKEW ANGLE DEGREE	DIMENSIONS						REINFORCEMENT BARS				EXPANSION BOLTS 3/4" EACH	CONCRETE COLLAR * CU YD	
								A INCHES	B INCHES	C INCHES	W INCHES	H INCHES	T INCHES	G INCHES	J INCHES	L INCHES	NUMBER BARS EACH			LB
LT	936+34.32	PCBC 3'x2'	26	1	<2'	1	-	60	48	-	36	24	4	44	38	120	4	27	8	0.3
RT	936+34.32	PCBC 3'x2'	26	1	<2'	1	-	60	48	-	36	24	4	44	38	120	4	27	8	0.3
TOTALS:																54	16	0.6		

*SKEWED CULVERT



* THE COST OF CONCRETE COLLAR FOR PRECAST BOX CULVERT EXTENSION IS TO BE INCLUDED IN THE COST OF BOX CULVERT EXTENSION.

CONCRETE BOX CULVERT EXTENSIONS

REVISIONS		ILLINOIS DEPARTMENT OF TRANSPORTATION
NAME	DATE	
		CULVERT EXTENSION COLLAR DETAILS DRAWN BY ASB CHECKED BY SJK DATE 8/02 EFFINGHAM COUNTY