

# T 8 N-R 5 E 3rd P.M. SUMMIT TWP

F.A.P. RTE.	SECTION	COUNTY	TOTAL SHEETS	SHEET NO.
774	107 WRS-2, L	EFFINGHAM	127	122
FED. ROAD DIST. NO. 7		ILLINOIS	FED. AID PROJECT	

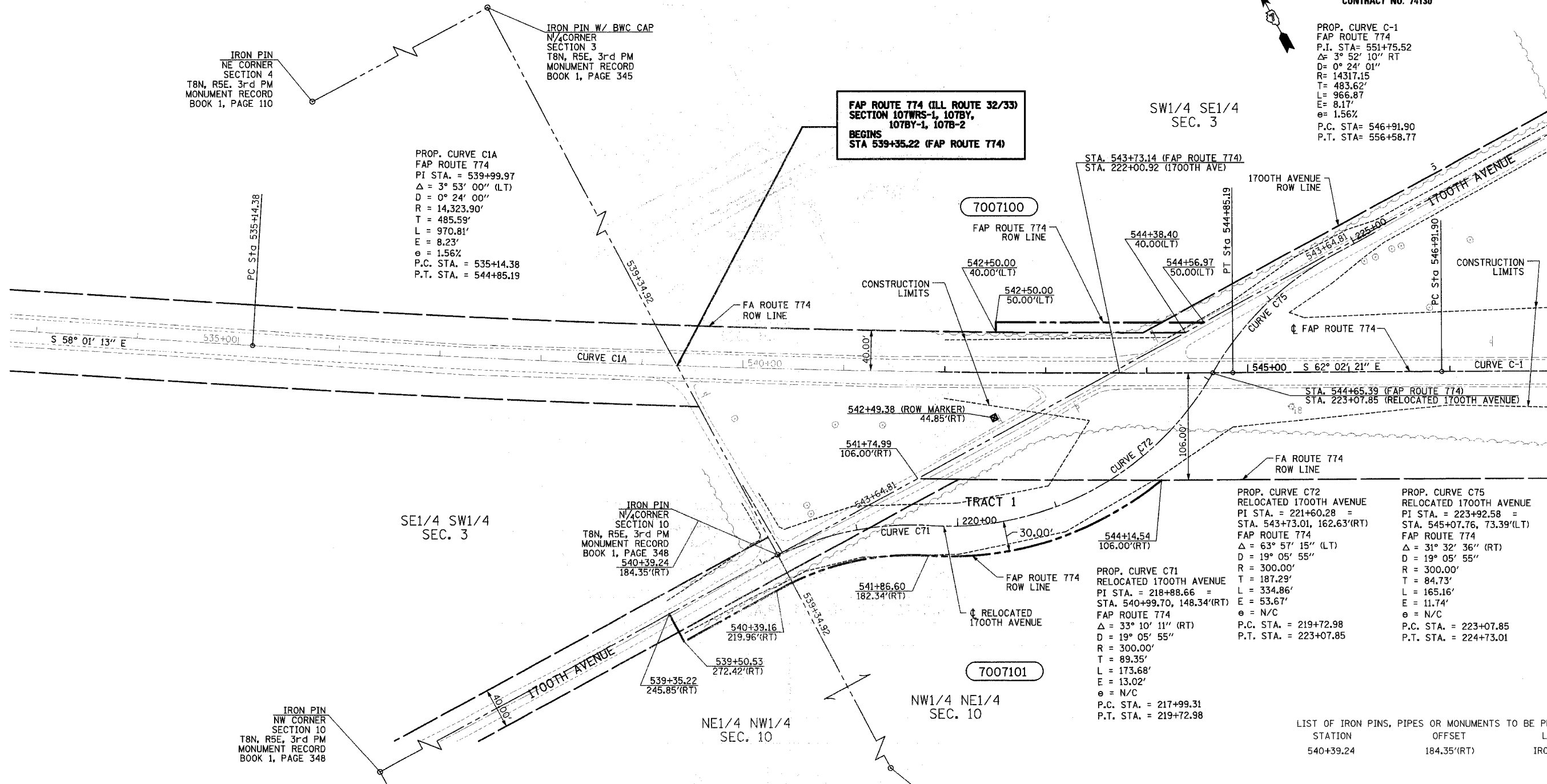
SHEET NO. 2  
7 SHEETS

CONTRACT NO. 74130

PROP. CURVE C-1  
FAP ROUTE 774  
P.I. STA= 551+75.52  
Δ = 3° 52' 10" RT  
D = 0° 24' 01"  
R = 14317.15  
T = 483.62'  
L = 966.87  
E = 8.17'  
e = 1.56%  
P.C. STA = 546+91.90  
P.T. STA = 556+58.77

10/7/02  
\\0349903\ROW\ROWPLANS\4-DGN

1 2 3 4 5 6 7 8 9  
10 11 12 13 14 15 16 17 18  
19 20 21 22 23 24 25 26 27  
28 29 30 31 32 33 34 35 36  
37 38 39 40 41 42 43 44 45  
46 47 48 49 50 51 52 53 54  
55 56 57 58 59 60 61 62 63



PROP. CURVE C72  
RELOCATED 1700TH AVENUE  
PI STA. = 221+60.28 =  
STA. 543+73.01, 162.63'(RT)  
FAP ROUTE 774  
Δ = 63° 57' 15" (LT)  
D = 19° 05' 55"  
R = 300.00'  
T = 187.29'  
L = 334.86'  
E = 53.67'  
e = N/C  
P.C. STA. = 219+72.98  
P.T. STA. = 223+07.85

PROP. CURVE C75  
RELOCATED 1700TH AVENUE  
PI STA. = 223+92.58 =  
STA. 545+07.76, 73.39'(LT)  
FAP ROUTE 774  
Δ = 31° 32' 36" (RT)  
D = 19° 05' 55"  
R = 300.00'  
T = 84.73'  
L = 165.16'  
E = 11.74'  
e = N/C  
P.C. STA. = 223+07.85  
P.T. STA. = 224+73.01

LIST OF ROW PINS, PIPES OR MONUMENTS TO BE PROTECTED

STATION	OFFSET	LABEL
540+39.24	184.35'(RT)	IRON PIN

**UTILITIES:**

TELEPHONE- ILLINOIS CONSOLIDATED TELEPHONE COMPANY  
VERIZON NORTH INC.

GAS- AMEREN CIPS

ELECTRICITY- NORRIS ELECTRIC COOPERATIVE  
AMEREN CIPS

WATER- E J WATER CORPORATION  
LAKE SARA AREA WATER COOPERATIVE, INC.  
CITY OF EFFINGHAM

SEWER- CITY OF EFFINGHAM

T.V. CABLE- AT & T MEDIA SERVICE

PARCEL	OWNER	ADD AREA TAKEN	EXIST. AREA	EASEMENT	REM. AREA	INST	MICRO FILM NO RECORDED	DATE	BOOK	PAGE	AREA EXCESS	SOLD
7007100	LLOYD G. FOSTER ET AL	1,551	420		1,590,299							
7007101	JAMES H. SPORLEDER ET AL	40,276	5,957		3,631,876							
	TRACT 1	17,636	5,957		3,509,183							
	TRACT 2	22,640			122,693							

CONTRACT NO.  
FIELD BOOK NO 449, 450, 451,  
452 & 452B  
(R) RECORDED DISTANCE

☒ - ROW MARKER  
○ - IRON PIN

NOTE: ALL AREAS ARE IN SQUARE FEET  
UNLESS OTHERWISE NOTED.

NOTE:  
BEARINGS ARE REFERENCED TO THE  
ILLINOIS STATE PLANE COORDINATE  
SYSTEM EAST ZONE DATUM OF 1983

RIGHT OF WAY PLANS  
FAP ROUTE 774  
SECTION

PROJECT

STATION 539+35.22 TO  
STATION 548+00.00  
COUNTY EFFINGHAM  
SCALE 1"=50' SHEET 2 OF 7

DRAWN BY: NJV  
WRITTEN BY: TLS  
CHECKED BY: BKB  
INSPECTED BY: RMD