

T 8 N-R 5 E 3rd P.M. SUMMIT TWP

F.A.P. RTE.	SECTION	COUNTY	TOTAL SHEETS	SHEET NO.
774	107 WRS-2, L	EFFINGHAM	127	123
FED. ROAD DIST. NO. 7 ILLINOIS			FED. AID PROJECT	

SHEET NO. 3
7 SHEETS

CONTRACT NO. 74130

10/7/02
 0349903 ROW PLAN-4.DGN
 1 2 3 4 5 6 7 8 9
 10 11 12 13 14 15 16 17 18
 19 20 21 22 23 24 25 26 27
 28 29 30 31 32 33 34 35 36
 37 38 39 40 41 42 43 44
 45 46 47 48 49 50 51 52
 53 54 55 56 57 58 59 60 61
 62 63

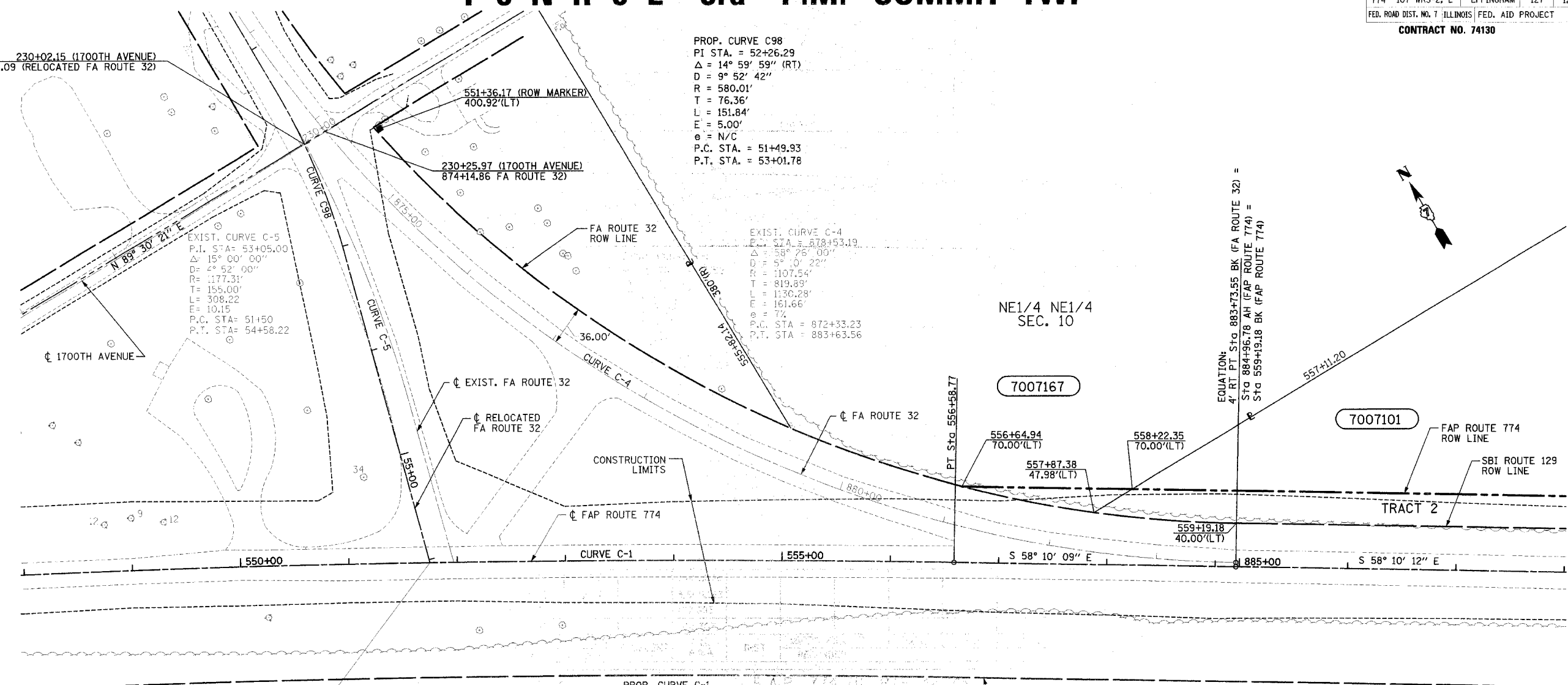
PROP. CURVE C98
 P.I. STA. = 52+26.29
 $\Delta = 14^\circ 59' 59''$ (RT)
 $D = 9^\circ 52' 42''$
 $R = 580.01'$
 $T = 76.36'$
 $L = 151.84'$
 $E = 5.00'$
 $e = N/C$
 P.C. STA. = 51+49.93
 P.T. STA. = 53+01.78

EXIST. CURVE C-4
 P.I. STA. = 878+53.19
 $\Delta = 58^\circ 26' 00''$
 $D = 5^\circ 0' 22''$
 $R = 1107.54'$
 $T = 819.89'$
 $L = 1130.28'$
 $E = 161.66'$
 $e = 7\%$
 P.C. STA. = 872+33.23
 P.T. STA. = 883+63.56

EXIST. CURVE C-5
 P.I. STA. = 53+05.00
 $\Delta = 15^\circ 00' 00''$
 $D = 4^\circ 52' 00''$
 $R = 1177.31'$
 $T = 155.00'$
 $L = 308.22'$
 $E = 10.15'$
 P.C. STA. = 51+50
 P.T. STA. = 54+58.22

PROP. CURVE C-1
 P.I. STA. = 551+75.52
 $\Delta = 3^\circ 52' 10''$ RT
 $D = 0^\circ 24' 01''$
 $R = 14317.15'$
 $T = 483.62'$
 $L = 966.87'$
 $E = 8.17'$
 $e = 1.56\%$
 P.C. STA. = 546+91.90
 P.T. STA. = 556+58.77

STA. 551+74.79 (IL RTE 33) =
 STA. 56+03.00 (RELOCATED IL RTE 32)



EQUATION:
 $4' RT PT Sta. 883+73.55 BK (FA ROUTE 32) =$
 $Sta. 884+96.78 AH (FAP ROUTE 774) =$
 $Sta. 559+19.18 BK (FAP ROUTE 774)$

UTILITIES:

TELEPHONE- ILLINOIS CONSOLIDATED TELEPHONE COMPANY
 VERIZON NORTH INC.
 GAS- AMEREN CIPS
 ELECTRICITY- NORRIS ELECTRIC COOPERATIVE
 AMEREN CIPS
 WATER- E J WATER CORPORATION
 LAKE SARA AREA WATER COOPERATIVE, INC.
 CITY OF EFFINGHAM
 SEWER- CITY OF EFFINGHAM
 T.V. CABLE- AT & T MEDIA SERVICE

CONTRACT NO.
 FIELD BOOK NO 449, 450, 451,
 452 & 452B
 (R) RECORDED DISTANCE

NOTE: ALL AREAS ARE IN SQUARE FEET
 UNLESS OTHERWISE NOTED.
 NOTE:
 BEARINGS ARE REFERENCED TO THE
 ILLINOIS STATE PLANE COORDINATE
 SYSTEM EAST ZONE DATUM OF 1983

RIGHT OF WAY PLANS
 FAP ROUTE 774
 PROJECT SECTION
 STATION 548+00.00 TO
 STATION 888+00.00
 COUNTY EFFINGHAM
 SCALE 1"=50' SHEET 3 OF 7

7007101	JAMES H. SPORLEDER ET AL	40,276	5,957		3,631,876										
	TRACT 1	17,636	5,957		3,509,183										
	TRACT 2	22,640			122,693										
7007167	JAMES H. SPORLEDER	1,880			801,303										
PARCEL	OWNER	ADD AREA TAKEN	EXIST. AREA TAKEN	EASEMENT	REM. AREA	INST	MICRO FILM NO RECORDED	DATE	BOOK	PAGE	AREA	SOLD	EXCESS		

JOB NO.