

T 8 N-R 5 E 3rd P.M. SUMMIT TWP

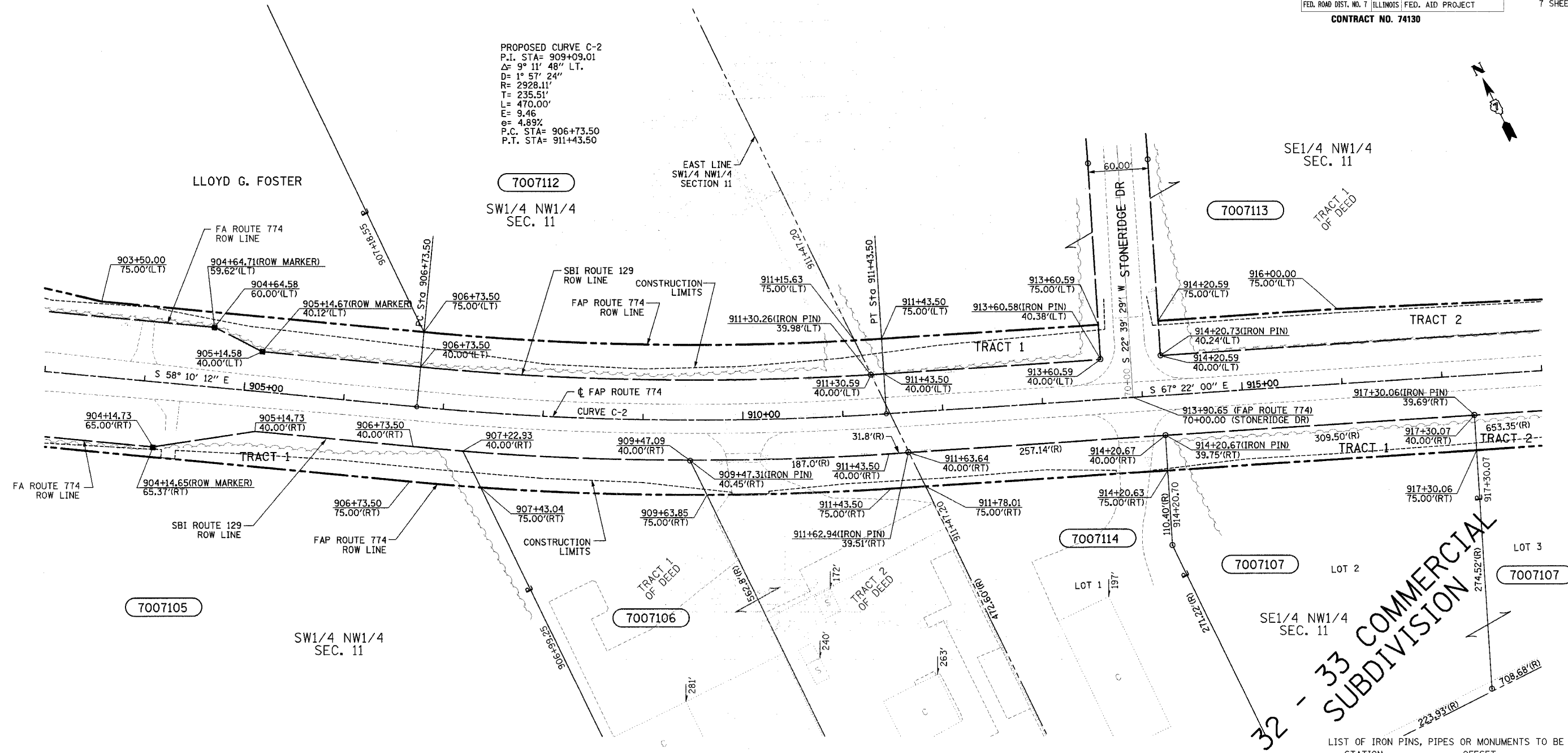
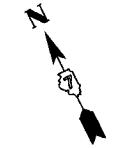
F.A.P. RTE.	SECTION	COUNTY	TOTAL SHEETS	SHEET NO.
774	107 WRS-2, L	EFFINGHAM	127	125

SHEET NO. 5
7 SHEETS

CONTRACT NO. 74130

10/7/02
\\0349903\ROW ROWPLANSI-4.DGN

- 1
- 2
- 3
- 4
- 5
- 6
- 7
- 8
- 9
- 10
- 11
- 12
- 13
- 14
- 15
- 16
- 17
- 18
- 19
- 20
- 21
- 22
- 23
- 24
- 25
- 26
- 27
- 28
- 29
- 30
- 31
- 32
- 33
- 34
- 35
- 36
- 37
- 38
- 39
- 40
- 41
- 42
- 43
- 44
- 45
- 46
- 47
- 48
- 49
- 50
- 51
- 52
- 53
- 54
- 55
- 56
- 57
- 58
- 59
- 60
- 61
- 62
- 63



PROPOSED CURVE C-2
P.I. STA= 909+09.01
Δ= 9° 11' 48" LT.
D= 1° 57' 24"
R= 2928.11'
T= 235.51'
L= 470.00'
E= 9.46
e= 4.89%
P.C. STA= 906+73.50
P.T. STA= 911+43.50

UTILITIES:
TELEPHONE- ILLINOIS CONSOLIDATED TELEPHONE COMPANY
VERIZON NORTH INC.
GAS- AMEREN CIPS
ELECTRICITY- NORRIS ELECTRIC COOPERATIVE
AMEREN CIPS
WATER- E J WATER CORPORATION
LAKE SARA AREA WATER COOPERATIVE, INC.
CITY OF EFFINGHAM
SEWER- CITY OF EFFINGHAM
T.V. CABLE- AT & T MEDIA SERVICE

PARCEL	OWNER	ADD AREA	EXIST. AREA	EASEMENT	REM. AREA	INST	MICRO FILM NO RECORDED	DATE	BOOK	PAGE	AREA	SOLD EXCESS
7007105	DELBERT E. SOLTWEDEL	45,350	16,732		2,557,380							
	TRACT 1	35,935	16,732									
	TRACT 2	9,415										
7007106	GARY L. BARTELS	15,604			212,004							
7007112	EMMA MARGUERITE SOLTWEDEL ET AL	41,578			690,364							
7007113	KABBES PROPERTIES INC., AN ILLINOIS CORPORATION	58,821			4,609,593							
	TRACT 1	8,296										
	TRACT 2	50,525										
7007114	RANDOLPH DAVID LAWRENCE	8,744			78,707							
7007107	KABBES PROPERTIES INC., AN ILLINOIS CORPORATION	32,407			149,076							
	TRACT 1	10,829			79,549							
	TRACT 2	21,578			69,527							

LIST OF IRON PINS, PIPES OR MONUMENTS TO BE PROTECTED

STATION	OFFSET	LABEL
909+47.31	40.45'(RT)	IRON PIN
911+30.26	39.98'(LT)	IRON PIN
911+62.94	39.51'(RT)	IRON PIN
913+60.58	40.38'(LT)	IRON PIN
914+20.67	39.75'(RT)	IRON PIN
914+20.73	40.24'(LT)	IRON PIN
917+30.06	39.69'(RT)	IRON PIN

CONTRACT NO. 74130
FIELD BOOK NO 449, 450, 451, 452 & 452B
(R) RECORDED DISTANCE
○ - IRON PIN
■ - ROW MARKER

NOTE: ALL AREAS ARE IN SQUARE FEET UNLESS OTHERWISE NOTED.
NOTE: BEARINGS ARE REFERENCED TO THE ILLINOIS STATE PLANE COORDINATE SYSTEM EAST ZONE DATUM OF 1983

RIGHT OF WAY PLANS
FAP ROUTE 774
PROJECT SECTION
STATION 903+00.00 TO
STATION 918+00.00
COUNTY EFFINGHAM
SCALE 1"=50' SHEET 5 OF 7