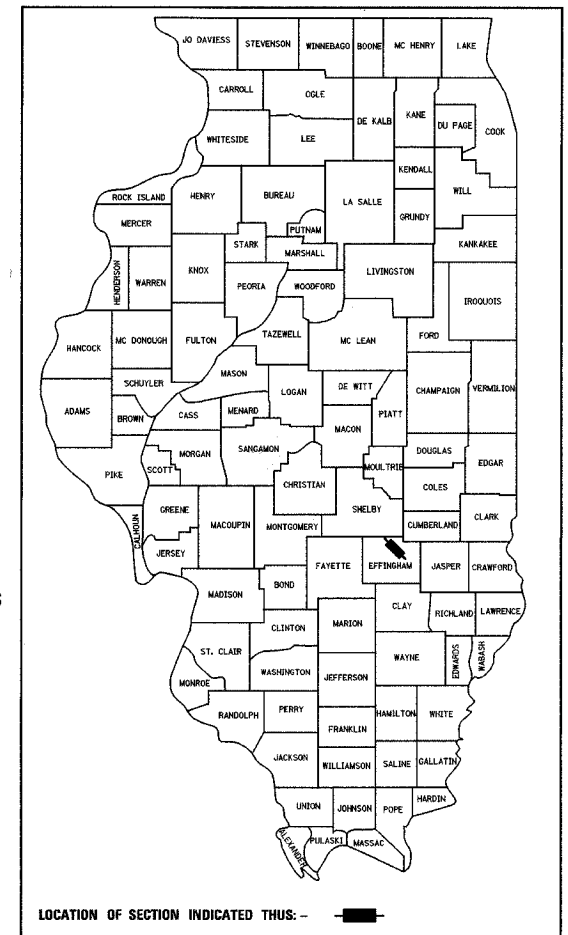


STATE OF ILLINOIS
 DEPARTMENT OF TRANSPORTATION
 DIVISION OF HIGHWAYS
**PLANS FOR PROPOSED
 FEDERAL HIGHWAY PROJECT**

F.A.P. RTE.	SECTION	COUNTY	TOTAL SHEETS	SHEET NO.
774	(107) N	EFFINGHAM	27	1
FED. ROAD DIST. NO. 7 ILLINOIS FED. AID PROJECT				

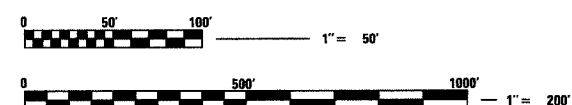
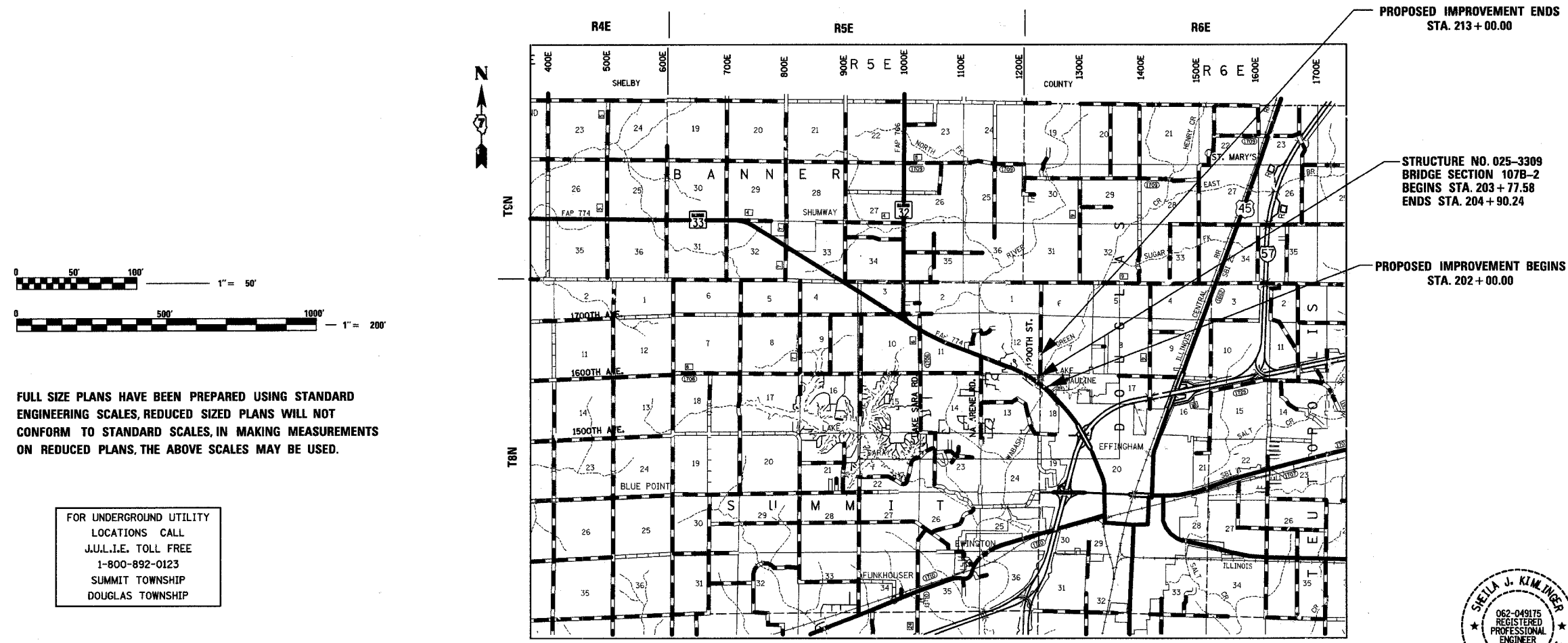
CONTRACT NO. 74131

D-97-005-06



FOR INDEX OF SHEETS, SEE SHEET NO. 2
 FOR SUMMARY OF QUANTITIES, SEE SHEET NO. 4

F.A.P. ROUTE 774 (ILLINOIS ROUTE 32/33)
 SECTION (107) N
 PROJECT: F-0774-(024)
 EFFINGHAM COUNTY
 C-97-007-06



FULL SIZE PLANS HAVE BEEN PREPARED USING STANDARD ENGINEERING SCALES, REDUCED SIZED PLANS WILL NOT CONFORM TO STANDARD SCALES, IN MAKING MEASUREMENTS ON REDUCED PLANS, THE ABOVE SCALES MAY BE USED.

FOR UNDERGROUND UTILITY LOCATIONS CALL J.U.L.I.E. TOLL FREE 1-800-892-0123 SUMMIT TOWNSHIP DOUGLAS TOWNSHIP

PROJECT ENGINEER: BILL STANLEY
 SQUAD LEADER:
 TELEPHONE: 217-342-8320

CONTRACT NO. 74131
 SUMMIT TOWNSHIP
 DOUGLAS TOWNSHIP

LOCATION MAP
 GROSS AND NET LENGTH OF PROJECT = 1,100 FT. = 0.21 MILES



Sheila J. Kimlinger
 SHEILA J. KIMLINGER, P.E.
 DATE: 3-8-2006
 EXPIRES: 11/30/2007

STATE OF ILLINOIS
 DEPARTMENT OF TRANSPORTATION
 DIVISION OF HIGHWAYS

SUBMITTED 3-29 2006
Christian M. Breda
 DEPUTY DIRECTOR OF HIGHWAYS, REGION ENGINEER

20

ENGINEER OF PROJECT DEVELOPMENT AND IMPLEMENTATION
May 12, 2006
Mike Hine
 ENGINEER OF DESIGN AND ENVIRONMENT

ENGINEER OF DESIGN AND ENVIRONMENT
May 12, 2006
Milton K. See
 DIRECTOR, DIVISION OF HIGHWAYS

FHWA _____ 20 _____
 DIVISION ADMINISTRATOR

**PRINTED BY AUTHORITY
 OF THE STATE OF ILLINOIS**