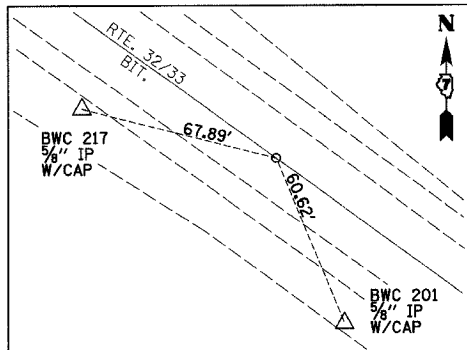
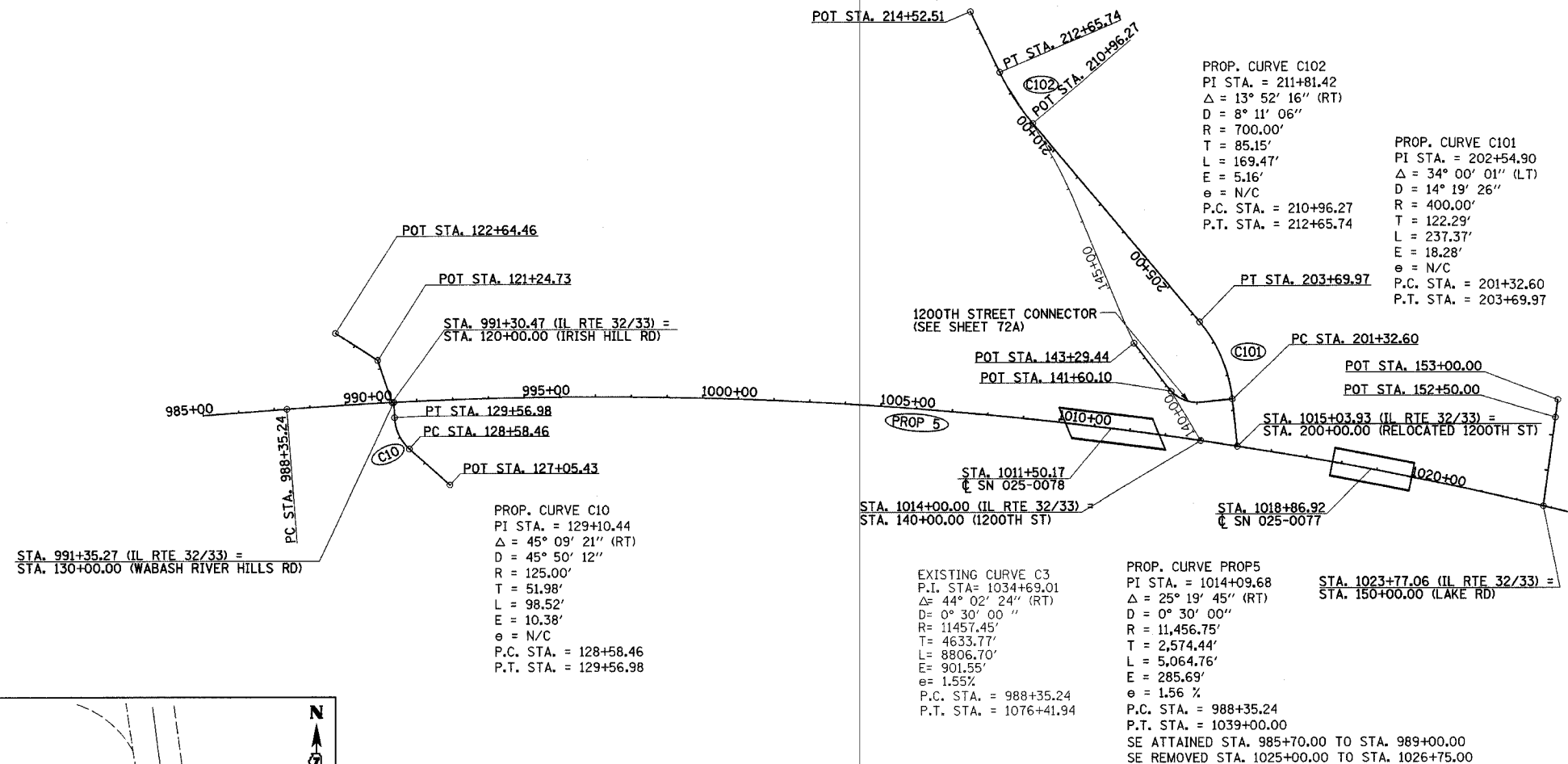
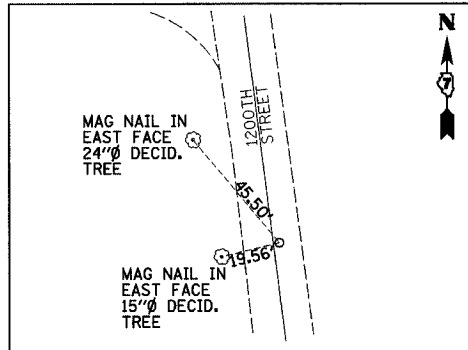


F.A.P. RTE.	SECTION	COUNTY	TOTAL SHEETS	SHEET NO.
774	(107) N	EFFINGHAM	27	8
FED. ROAD DIST. NO.	ILLINOIS	FED. AID PROJECT		

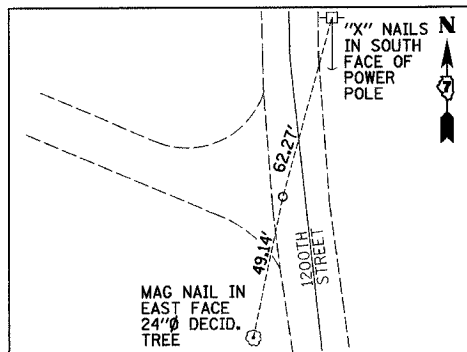
CONTRACT NO. 74131



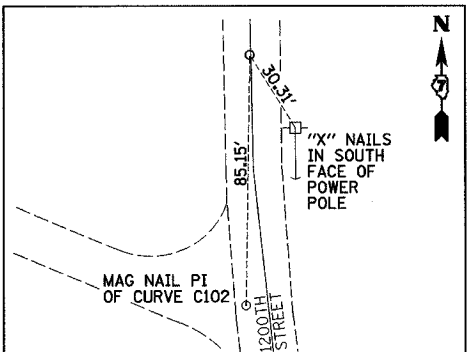
RELOCATED 1200TH STREET STA. 200+00.00 =  
 RTE. 32/33 STA. 1015+03.93  
 (MAG NAIL)



PC PROP. CURVE C102 (RELOCATED 1200TH STREET)  
 STA. 210+96.27  
 (MAG NAIL)



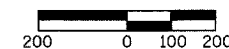
PI PROP. CURVE C102 (RELOCATED 1200TH STREET)  
 STA. 211+81.42  
 (MAG NAIL)



PT PROP. CURVE C102 (RELOCATED 1200TH STREET)  
 STA. 212+65.74  
 (MAG NAIL)

BM #9  
 121' RT, STA. 991+87, ELEV. 558.84  
 CHISELED "X" IN NORTH BOLT OF FIRE  
 HYDRANT AT WABASH RIVERHILLS AND  
 IL RTE 32/33

BM #60  
 79' RT, STA. 1024+86, ELEV. 548.63  
 CHISELED "X" ON NORTH FLANGE BOLT  
 OF FIRE HYDRANT



REVISIONS	
NAME	DATE

ILLINOIS DEPARTMENT OF TRANSPORTATION

CONTROL TIES, BENCHMARKS &  
 HORIZONTAL ALIGNMENT PLAN

SCALE: 1"=200'  
 DATE 4/22/02

DRAWN BY NJV  
 CHECKED BY BKB