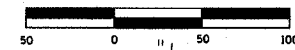
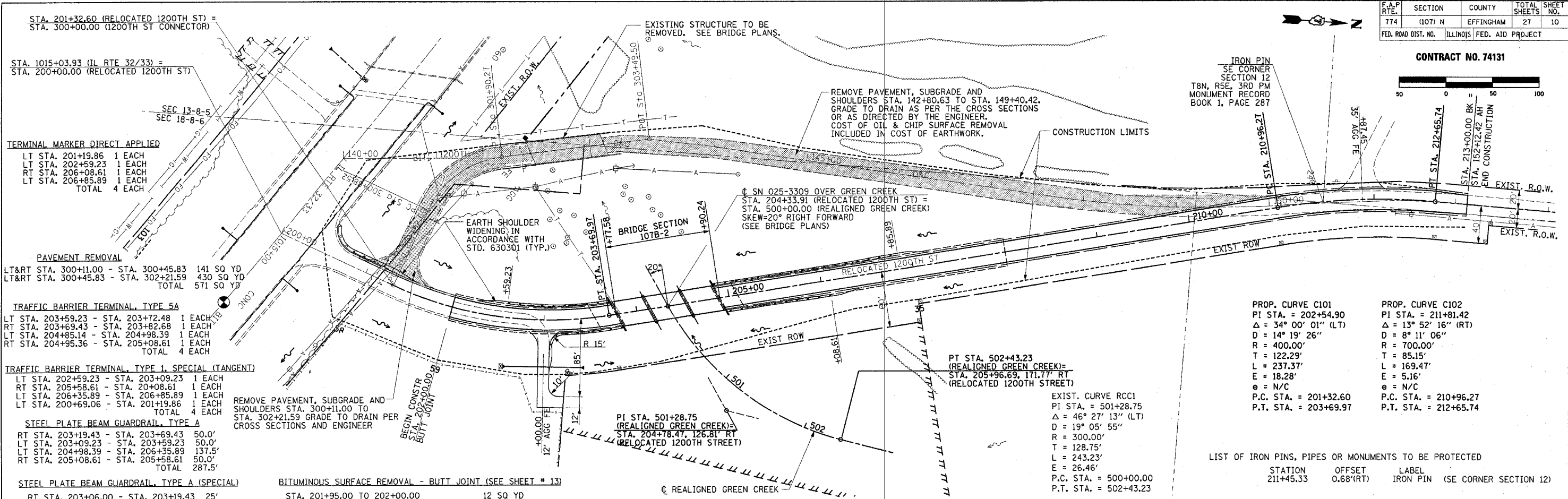


F.A.P. RTE.	SECTION	COUNTY	TOTAL SHEETS	SHEET NO.
774	(107) N	EFFINGHAM	27	10
FED. ROAD DIST. NO.		ILLINOIS	FED. AID PROJECT	

CONTRACT NO. 74131



IRON PIN
SE CORNER
SECTION 12
T8N, R5E, 3RD PM
MONUMENT RECORD
BOOK 1, PAGE 287



- PAVEMENT REMOVAL**
LT&RT STA. 300+11.00 - STA. 300+45.83 141 SQ YD
LT&RT STA. 300+45.83 - STA. 302+21.59 430 SQ YD
TOTAL 571 SQ YD
- TRAFFIC BARRIER TERMINAL, TYPE 5A**
LT STA. 203+59.23 - STA. 203+72.48 1 EACH
RT STA. 203+69.43 - STA. 203+82.68 1 EACH
LT STA. 204+85.14 - STA. 204+98.39 1 EACH
RT STA. 204+95.36 - STA. 205+08.61 1 EACH
TOTAL 4 EACH
- TRAFFIC BARRIER TERMINAL, TYPE 1, SPECIAL (TANGENT)**
LT STA. 202+59.23 - STA. 203+09.23 1 EACH
RT STA. 205+58.61 - STA. 20+08.61 1 EACH
LT STA. 206+35.89 - STA. 206+85.89 1 EACH
RT STA. 200+69.06 - STA. 201+19.86 1 EACH
TOTAL 4 EACH
- STEEL PLATE BEAM GUARDRAIL, TYPE A**
RT STA. 203+19.43 - STA. 203+69.43 50.0'
LT STA. 203+09.23 - STA. 203+59.23 50.0'
LT STA. 204+98.39 - STA. 206+35.89 137.5'
RT STA. 205+08.61 - STA. 205+58.61 50.0'
TOTAL 287.5'
- STEEL PLATE BEAM GUARDRAIL, TYPE A (SPECIAL)**
RT STA. 203+06.00 - STA. 203+19.43 25'
- BITUMINOUS SURFACE REMOVAL - BUTT JOINT (SEE SHEET # 13)**
STA. 201+95.00 TO 202+00.00 12 SQ YD
- REMOVE PAVEMENT, SUBGRADE AND SHOULDERS STA. 300+11.00 TO STA. 302+21.59 GRADE TO DRAIN PER CROSS SECTIONS AND ENGINEER**
- EARTH SHOULDER WIDENING IN ACCORDANCE WITH STD. 630301 (TYP.)**
- REMOVE PAVEMENT, SUBGRADE AND SHOULDERS STA. 142+80.63 TO STA. 149+40.42. GRADE TO DRAIN AS PER THE CROSS SECTIONS OR AS DIRECTED BY THE ENGINEER. COST OF OIL & CHIP SURFACE REMOVAL INCLUDED IN COST OF EARTHWORK.**
- EXIST. CURVE RCC1**
PI STA. = 501+28.75
Δ = 46° 27' 13" (LT)
D = 19° 05' 55"
R = 300.00'
T = 128.75'
L = 243.23'
E = 26.46'
P.C. STA. = 500+00.00
P.T. STA. = 502+43.23
- EXIST. CURVE C101**
PI STA. = 202+54.90
Δ = 34° 00' 01" (LT)
D = 14° 19' 26"
R = 400.00'
T = 122.29'
L = 237.37'
E = 18.28'
P.C. STA. = 201+32.60
P.T. STA. = 203+69.97
- EXIST. CURVE C102**
PI STA. = 211+81.42
Δ = 13° 52' 16" (RT)
D = 8° 11' 06"
R = 700.00'
T = 85.15'
L = 169.47'
E = 5.16'
P.C. STA. = 210+96.27
P.T. STA. = 212+65.74

