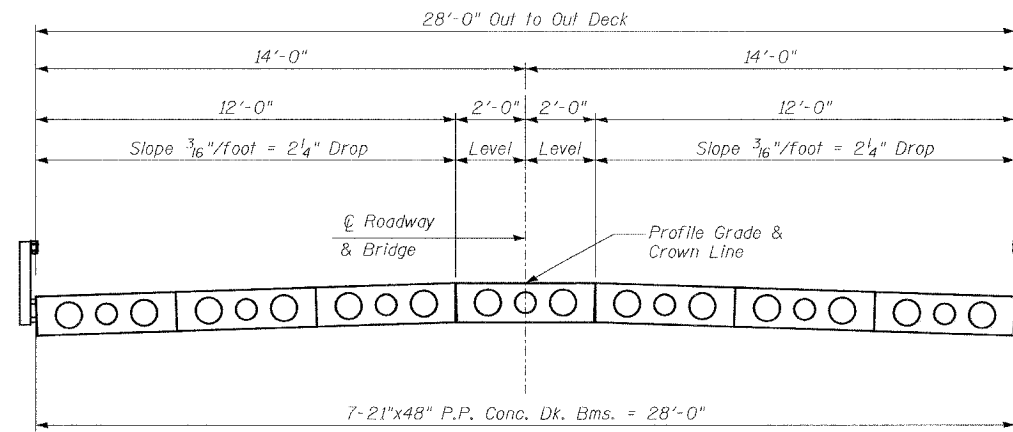
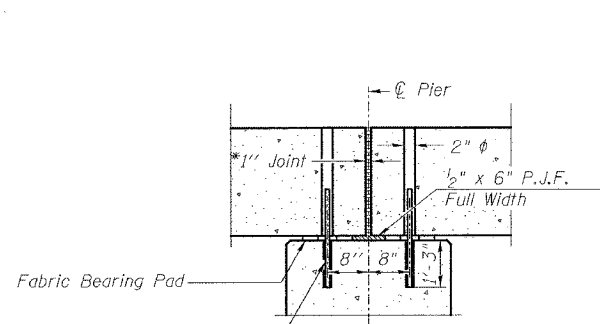


STATE OF ILLINOIS  
DEPARTMENT OF TRANSPORTATION

ROUTE NO.	SECTION	COUNTY	SHEET	NO.	SHEET NO. 3
FAP 774	107B-2	EFFINGHAM	27	22	8 SHEETS
FED. ROAD DIST. NO. 7		ILLINOIS FED. AID PROJECT-		CONTRACT NO. 74131	



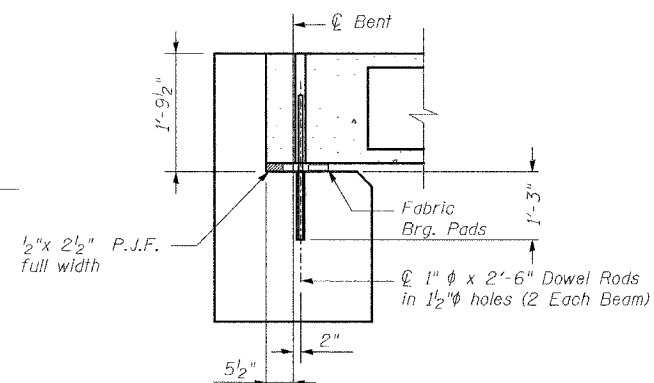
CROSS SECTION



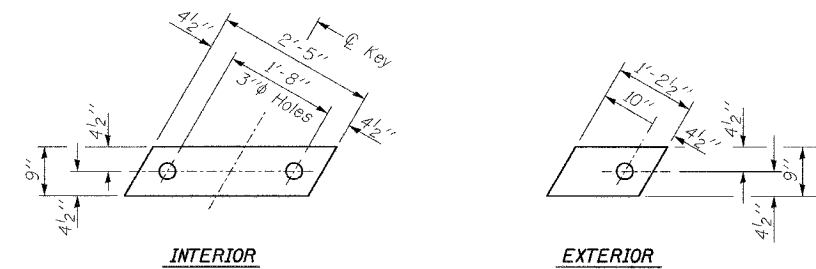
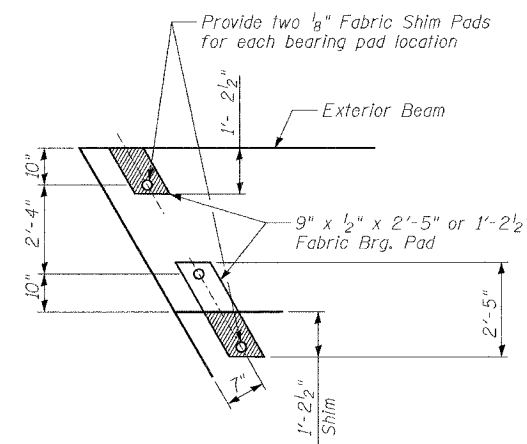
SECTION THRU PIER  
(Along  $\phi$  beams)

1"  $\phi$  x 2'-6" dowel rods  
in 1/2"  $\phi$  holes drilled in cap  
(2 each beam)

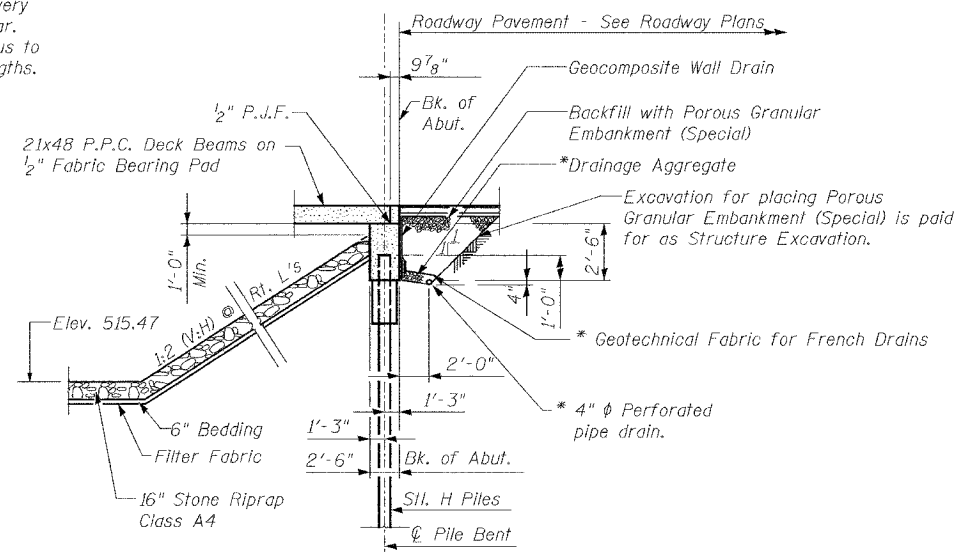
\* 1" Joint shall be packed with a very dry mix of 2:1 sand and P.C. mortar. 1" Dimension may vary plus or minus to accommodate tolerance in beam lengths.



SECTION AT ABUTMENTS  
(ALONG  $\phi$  BEAMS)



1/2" FABRIC BEARING PAD DETAILS



SECTION THRU ABUTMENT  
(AT RT. L'S)

\* Included in the cost of Pipe Underdrains for Structures.

Note:  
All drainage system components shall extend parallel to the abutment back wall until they intersect the wingwalls or 2'-0" from the end of the wingwalls when the wings are parallel to the abutment. The pipe shall extend under the wingwall, if necessary, until intersecting the side slopes. The pipes shall drain into concrete headwalls. (See Article 601.05 of the Standard Specifications and Highway Standard 601.10).

NOTES

- Nominal 1" joint at  $\phi$  Pier may be filled with non-shrink grout in lieu of P.C. mortar mixture at contractor's option.
- Longitudinal keys shall be grouted.
- The bearing seat surfaces shall be adjusted by shimming to assure firm and even bearing. Two 1/8" fabric adjusting shims of the dimensions of the Exterior Bearing Pad shall be provided for each bearing.

P.P.C. DECK BEAM SUPERSTRUCTURE  
DETAILS  
1200th STREET OVER GREEN CREEK  
FAP RTE. 774, SECTION 107B-2  
EFFINGHAM COUNTY  
STATION 204+33.91  
S.N. 025-3309

DESIGNED	TMM
CHECKED	KCM
DRAWN	CAR
CHECKED	TMM