

F.A.P. RTE.	SECTION	COUNTY	TOTAL SHEETS	SHEET NO.
774	(107) N	EFFINGHAM	27	1
FED. ROAD DIST. NO. 7 ILLINOIS FED. AID PROJECT				

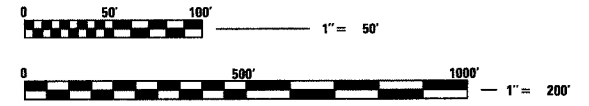
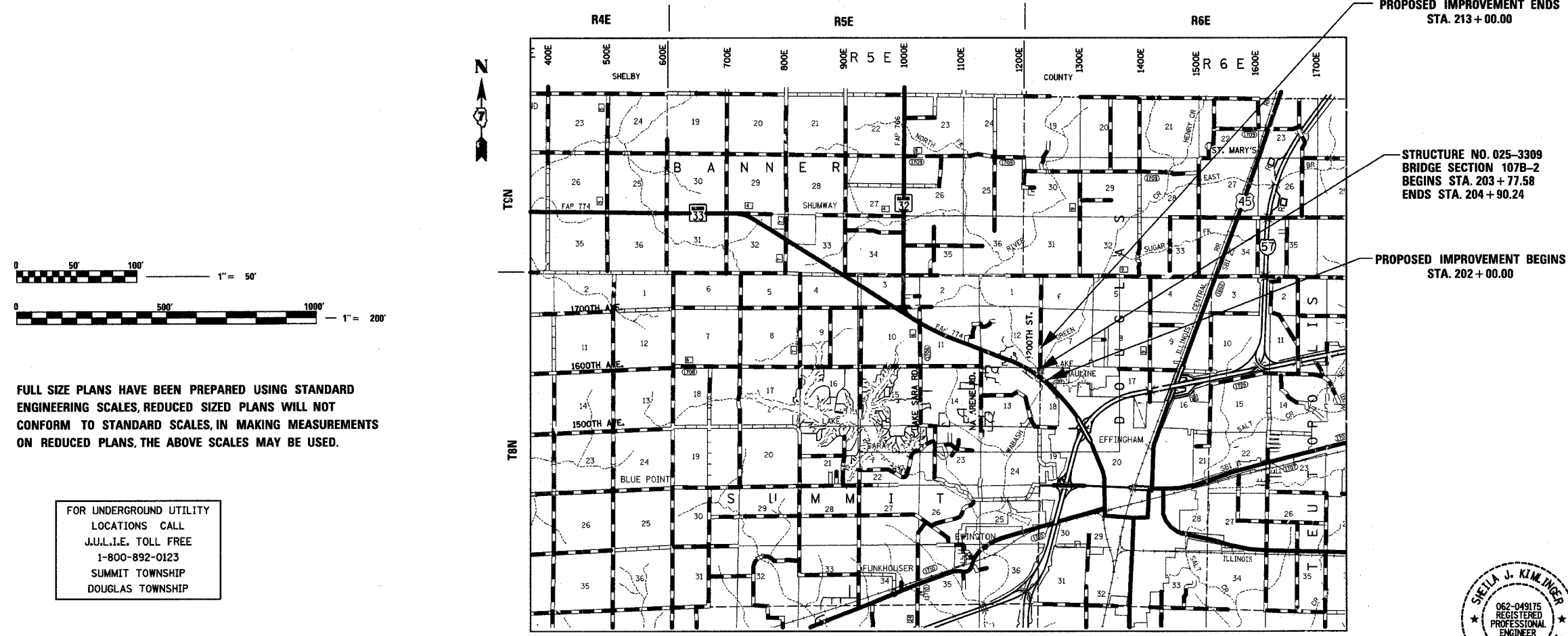
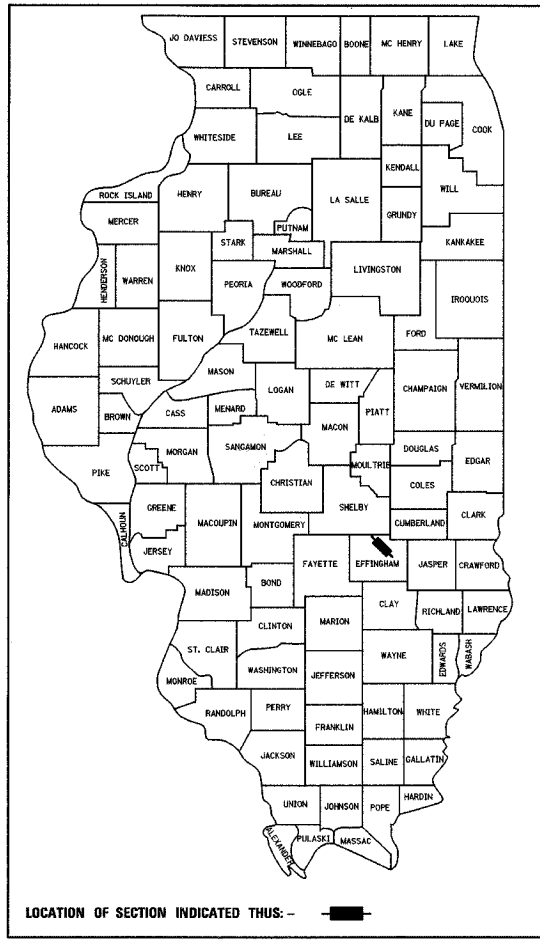
STATE OF ILLINOIS
DEPARTMENT OF TRANSPORTATION
DIVISION OF HIGHWAYS

PLANS FOR PROPOSED FEDERAL HIGHWAY PROJECT

CONTRACT NO. 74131
D-97-005-06

FOR INDEX OF SHEETS, SEE SHEET NO. 2
FOR SUMMARY OF QUANTITIES, SEE SHEET NO. 4

F.A.P. ROUTE 774 (ILLINOIS ROUTE 32/33)
SECTION (107) N
PROJECT: F-0774-(024)
EFFINGHAM COUNTY
C-97-007-06



FULL SIZE PLANS HAVE BEEN PREPARED USING STANDARD ENGINEERING SCALES, REDUCED SIZED PLANS WILL NOT CONFORM TO STANDARD SCALES, IN MAKING MEASUREMENTS ON REDUCED PLANS, THE ABOVE SCALES MAY BE USED.

FOR UNDERGROUND UTILITY LOCATIONS CALL J.U.L.I.E. TOLL FREE 1-800-892-0123 SUMMIT TOWNSHIP DOUGLAS TOWNSHIP

STATE OF ILLINOIS
DEPARTMENT OF TRANSPORTATION
DIVISION OF HIGHWAYS

SUBMITTED 3-29 2006
Christian M. Breda
DEPUTY DIRECTOR OF HIGHWAYS, REGION ENGINEER

20

ENGINEER OF PROJECT DEVELOPMENT AND IMPLEMENTATION
May 12, 2006
Mike Hine
ENGINEER OF DESIGN AND ENVIRONMENT

May 12, 2006
Milton K. See
DIRECTOR, DIVISION OF HIGHWAYS

FHWA _____ 20 _____
DIVISION ADMINISTRATOR



Sheila J. Kimlinger
SHEILA J. KIMLINGER, P.E.
DATE: 3-8-2006
EXPIRES: 11/30/2007

**PRINTED BY AUTHORITY
OF THE STATE OF ILLINOIS**

PROJECT ENGINEER: BILL STANLEY
SQUAD LEADER:
TELEPHONE: 217-342-8320

CONTRACT NO. 74131
SUMMIT TOWNSHIP
DOUGLAS TOWNSHIP

LOCATION MAP
GROSS AND NET LENGTH OF PROJECT = 1,100 FT. = 0.21 MILES

F.A.P. RTE.	SECTION	COUNTY	TOTAL SHEETS	SHEET NO.
774	(107) N	EFFINGHAM	27	2
FED. ROAD DIST. NO.		ILLINOIS	FED. AID PROJECT	

CONTRACT NO. 74131

HIGHWAY STANDARDS

THE FOLLOWING STANDARDS ARE A PART OF THESE PLANS AND ARE INCLUDED AFTER SHEET NUMBER: 27

STANDARD NO.	DESCRIPTION
000001-04	STANDARD SYMBOLS, ABBREVIATION, AND PATTERNS
280001-02	TEMPORARY EROSION CONTROL SYSTEMS
515001-02	NAME PLATE FOR BRIDGES
542401	METAL END SECTIONS FOR PIPE CULVERTS
630001-06	STEEL PLATE BEAM GUARDRAIL
630301-03	SHOULDER WIDENING FOR TYPE 1 (SPECIAL) GUARDRAIL TERMINALS
631026-02	TRAFFIC BARRIER TERMINAL, TYPE 5 & 5A
635006-02	REFLECTOR AND TERMINAL MARKER PLACEMENT
635011-01	REFLECTOR MARKER AND MOUNTING DETAILS
701001-01	OFF-ROAD OPERATIONS, 2L, 2W, 4.5 m (15') AWAY
701006-02	OFF-ROAD OPERATIONS, 2L, 2W, 4.5 m (15') TO 600 mm (24") FROM PAVEMENT EDGE
701011-01	OFF-ROAD MOVING OPERATIONS, 2L, 2W DAY ONLY
701301-02	LANE CLOSURE, 2L, 2W SHORT TIME OPERATIONS
702001-06	TRAFFIC CONTROL DEVICES
BLR 21-6	TYPICAL APPLICATIONS OF TRAFFIC CONTROL DEVICES FOR CONSTRUCTION ON RURAL LOCAL HIGHWAYS

INDEX OF SHEETS

SHEET NO.	ITEM
1	COVER SHEET
2	HIGHWAY STANDARDS & INDEX OF SHEETS
3	GENERAL NOTES & COMMITMENTS
4	SUMMARY OF QUANTITIES
5	TYPICAL SECTIONS
6	SCHEDULE OF QUANTITIES
7	RURAL ENTRANCE DETAILS & SCHEDULES
8	CONTROL TIES, BENCHMARKS & HORIZONTAL ALIGNMENT PLAN
9	TRAFFIC CONTROL PLAN
10	PLAN AND PROFILE SHEET
11-12	EROSION CONTROL PLAN, GENERAL NOTES AND SCHEDULES
13	MISCELLANEOUS ROADWAY DETAILS
14-18	PUBLIC ROAD CROSS SECTIONS
19-27	BRIDGE PLANS - GREEN CREEK

REVISIONS	
NAME	DATE

ILLINOIS DEPARTMENT OF TRANSPORTATION

HIGHWAY STANDARDS AND
INDEX OF SHEETS

DATE 8/02
DRAWN BY ASB
CHECKED BY SJK

F.A.P. RTE.	SECTION	COUNTY	TOTAL SHEETS	SHEET NO.
774	(107) N	EFFINGHAM	27	3
FED. ROAD DIST. NO.		ILLINOIS	FED. AID PROJECT	

CONTRACT NO. 74131

GENERAL NOTES

- THIS SECTION SHALL BE CONSTRUCTED IN ACCORDANCE WITH THE PLANS, THE "STANDARD SPECIFICATIONS FOR ROAD AND BRIDGE CONSTRUCTION", ADOPTED JANUARY 1, 2002; THE "SUPPLEMENTAL SPECIFICATIONS AND RECURRING SPECIAL PROVISIONS" INDICATED ON THE CHECK SHEET, AND "THE SPECIAL PROVISIONS" INCLUDED IN THE PROPOSAL.
- THE WORK INCLUDED IN THIS SECTION CONSISTS OF CONSTRUCTION OF APPROXIMATELY 1100' OF RELOCATED 1200TH STREET, INCLUDING SURFACING, PAVEMENT REMOVAL AND TOTAL REPLACEMENT OF THE BRIDGE OVER GREEN CREEK.
- THE PROPOSED PROJECT BEGINS AT STA. 202+00.00 ON RELOCATED 1200TH STREET AND EXTENDS NORTH APPROXIMATELY 1100 FEET TO STA. 213+00.00 RELOCATED 1200TH STREET/STA. 152+12.42 EXISTING 1200TH STREET.
- THE CONTRACTOR SHALL PROVIDE AN ENGINEERS FIELD OFFICE TYPE B IN ACCORDANCE WITH ARTICLE 670.04 OF THE STANDARD SPECIFICATIONS.
- THE FOLLOWING BITUMINOUS CONCRETE SURFACE COURSE, SUPERPAVE, MIXTURE D, N70 MIXTURE REQUIREMENTS ARE APPLICABLE TO THIS PROJECT:

MIXTURE USE(S):	SURFACE COURSE-MAINLINE & PUBLIC ROADS
AC/PG:	PG 64-22
RAP%: (MAX)	15%
DESIGN AIR VOIDS:	4.0% @ NDESIGN = 70
MIXTURE COMPOSITION:	IL-9.5
(GRADATION MIXTURE)	
FRICTION AGGREGATE:	MIXTURE D
- THE FOLLOWING BITUMINOUS BASE COURSE SUPERPAVE 6" MIXTURE REQUIREMENTS ARE APPLICABLE TO THIS PROJECT:

MIXTURE USE(S):	BASE COURSE-PUBLIC ROADS & DRIVEWAYS
AC/PG:	PG 64-22
RAP%: (MAX)	25%
DESIGN AIR VOIDS:	4.0% @ NDESIGN = 70
MIXTURE COMPOSITION:	IL-19.0
(GRADATION MIXTURE)	
FRICTION AGGREGATE:	N/A
- ANY SECTION CORNERS DISTURBED DURING CONSTRUCTION SHALL BE REESTABLISHED BY A REGISTERED LAND SURVEYOR AT THE CONTRACTOR'S EXPENSE. A LIST OF SECTION CORNERS WITHIN THE PROJECT LIMITS IS CONTAINED IN THE PLANS, SHEET 10.
- ALL DISTURBED AREAS WITHIN THE CONSTRUCTION LIMITS SHALL BE FERTILIZED AND SEEDED. SEEDING SHALL BE CLASS 2 IN ACCORDANCE WITH THE SPECIFIC PROVISIONS AND THE APPLICABLE ARTICLES OF SECTION 250 OF THE STANDARD SPECIFICATIONS. THE FOLLOWING APPLICATION RATE SHALL BE USED FOR THE VARIOUS ITEMS NECESSARY FOR SEEDING:

NITROGEN FERTILIZER NUTRIENTS	- 90 LB/ACRE
PHOSPHORUS FERTILIZER NUTRIENTS	- 90 LB/ACRE
POTASSIUM FERTILIZER NUTRIENTS	- 90 LB/ACRE
AGRICULTURAL GROUND LIMESTONE	- 2 TONS/ACRE
- THE LOCATIONS OF UNDERGROUND UTILITIES SHOWN HAVE BEEN TAKEN FROM INFORMATION FURNISHED BY THE UTILITY OWNERS AND MUST BE CONSIDERED APPROXIMATE. FIELD MARKINGS OF ACTIVITIES IN CRITICAL AREAS MAY BE OBTAINED BY PROVIDING A MINIMUM OF 96 HOURS ADVANCE NOTICE THROUGH THE J.U.L.I.E. SYSTEM BY CALLING 800-892-0123.
- THE CONTRACTOR WILL BE RESPONSIBLE FOR RELOCATING SIGNS OR DELIVERING EXISTING SIGNS TO THE IDOT DISTRICT 7 SIGN SHOP AS DIRECTED BY THE ENGINEER. THE COST FOR THIS WORK SHALL BE INCLUDED IN THE COST OF TRAFFIC CONTROL ITEMS.
- THE CONTRACTOR SHALL BE RESPONSIBLE FOR MAINTAINING ALL ROUTE-SIGNS SUCH AS STOP SIGNS, SPEED LIMIT SIGNS ETC. AND THE COST FOR THIS WORK SHALL BE INCLUDED IN THE COST OF TRAFFIC CONTROL PAY ITEMS.
- COURSE AGGREGATE FOR "AGGREGATE SURFACE COURSE TYPE B" AND "AGGREGATE SHOULDERS" SHALL BE CRUSHED STONE, WITH MINIMUM IBR=80.
- EXISTING REMOVED RIPRAP MAY BE USED IN EMBANKMENT IN ACCORDANCE WITH THE STANDARD SPECIFICATIONS. THIS WORK IS NOT PAID FOR SEPARATELY, BUT INCLUDED IN THE COST OF EARTHWORK.
- EARTH STOCK PILES SHALL BE TEMPORARILY SEEDED IF THEY ARE TO REMAIN UNUSED FOR MORE THAN 14 DAYS. COST INCLUDED IN COST OF VARIOUS EARTHWORK QUANTITIES.
- ALL BACK SLOPES SHALL BE PLANTED IN NATIVE GRASSES AND FORBS AS PER SECTION 250 FOR CLASS 4A AND CLASS 5.
- THE EXISTING TEMPORARY FENCE FOR ACCESS CONTROL SHALL BE SAVED AND PROTECTED AND REMAIN UNTIL COMPLETION OF WORK. CONTRACTOR TO KEEP PERSONNEL AND EQUIPMENT OUT OF FENCED AREA. SEE SHEET 12 FOR TEMPORARY FENCE LOCATION.
- THIS PROJECT SHALL BE COORDINATED WITH CONSTRUCTION OF THE ROADWAY PROJECT IN THE SAME AREA. THE CONTRACTOR SHALL NOT START THIS PROJECT WITHOUT THE APPROVAL OF THE DISTRICT 7 PROJECT IMPLEMENTATION ENGINEER.

COMMITMENTS

- IN ORDER TO REDUCE DAMAGE TO GREEN CREEK AND THE LITTLE WABASH RIVER, THE STANDARD SPECIFICATIONS FOR EROSION AND SEDIMENT CONTROL SHOULD BE STRICTLY ADHERED TO. THE CONTRACTOR WILL STRICTLY APPLY EROSION CONTROL MEASURES (WITH DAILY INSPECTIONS) TO AVOID SEDIMENT FROM ENTERING THE CREEK. THE OPERATION OF HEAVY EQUIPMENT IN THE CREEK SHOULD BE AVOIDED OR MINIMIZED.
- IN ORDER TO AVOID INFESTATION OF GREEN CREEK AND THE LITTLE WABASH RIVER WITH ZEBRA MUSSELS, THE CONTRACTOR WILL GIVE WRITTEN CERTIFICATION THAT (1) ALL EQUIPMENT TO BE USED IN THE CREEK HAS NEVER BEEN IN ZEBRA MUSSEL INFESTED WATERS (SUCH AS THE OHIO, ILLINOIS, OR MISSISSIPPI RIVERS, OR LAKE MICHIGAN), OR (2) IF IT HAS, IT HAS BEEN COMPLETELY DRY FOR AT LEAST 21 DAYS (INCLUDING BILGES, WELLS, OR OTHER PARTS OF THE EQUIPMENT THAT COULD HOLD MOISTURE, OR CLUMPS OF WEEDS THAT MAY HAVE BECOME STUCK TO THE EQUIPMENT) AND HAS BEEN INSPECTED FOR ZEBRA MUSSEL ADULTS AND JUVENILES (WHICH CAN BE MICROSCOPIC, GIVING THE EQUIPMENT A GRITTY FEELING) PRIOR TO ENTERING GREEN CREEK, OR (3) AS THE LEAST DESIRABLE OPTION, HAS HAD ALL VISIBLE VEGETATION REMOVED FROM PARTS THAT WERE IN THE WATER, AND HAS BEEN APPROPRIATELY CLEANED (E.G. WITH BLEACH OR A HOT PRESSURE SPRAY OF AT LEAST 140 F FOR AT LEAST 5 MINUTES), AND HAS BEEN INSPECTED FOR ZEBRA MUSSEL ADULTS AND JUVENILES PRIOR TO ENTERING THE CREEK. "EQUIPMENT" INCLUDES WORKING PLATFORM, AS WELL AS BOATS, CRANES, CONSTRUCTION VEHICLES, ETC. SEE SPECIAL PROVISIONS FOR CONTRACTOR CERTIFICATION STATEMENT.

REVISIONS		ILLINOIS DEPARTMENT OF TRANSPORTATION
NAME	DATE	
		GENERAL NOTES AND COMMITMENTS

DRAWN BY MLO
CHECKED BY SJK

DATE 8/02

CONTRACT NO. 74131

80% FED. / 20% STATE

SUMMARY OF QUANTITIES				CONSTRUCTION TYPE CODE	
PAY CODE NUMBER	ITEM	UNIT	TOTAL QUANTITY	1000-2A	X080-2A
				RURAL	RURAL
20200100	EARTH EXCAVATION	CU YD	5,730	5,730	
20700400	POROUS GRANULAR EMBANKMENT (SPECIAL)	CU YD	53		53
25000210	SEEDING, CLASS 2A	ACRE	1.25	1.25	
25000312	SEEDING, CLASS 4A	ACRE	2.50	2.50	
25000320	SEEDING, CLASS 5	ACRE	2.50	2.50	
25000400	NITROGEN FERTILIZER NUTRIENT	POUND	338	338	
25000500	PHOSPHORUS FERTILIZER NUTRIENT	POUND	338	338	
25000600	POTASSIUM FERTILIZER NUTRIENT	POUND	338	338	
25000700	AGRICULTURAL GROUND LIMESTONE	TON	7.5	7.5	
25100120	MULCH, METHOD 2	TON	7.5	7.5	
28000250	TEMPORARY EROSION CONTROL SEEDING	POUND	380	380	
28000300	TEMPORARY DITCH CHECKS	EACH	6	6	
28000400	PERIMETER EROSION BARRIER	FOOT	1,060	1,060	
28000500	INLET AND PIPE PROTECTION	EACH	1	1	
28100107	STONE RIPRAP, CLASS A4	SQ YD	2223		2223
28200200	FILTER FABRIC	SQ YD	2223		2223
31000300	SUB-BASE GRANULAR MATERIAL, TYPE A 4'	SQ YD	2,744	2,744	
40200800	AGGREGATE SURFACE COURSE, TYPE B	TON	19	19	
40600980	BITUMINOUS SURFACE REMOVAL - BUTT JOINT	SQ YD	12	12	
40600100	BITUMINOUS MATERIALS (PRIME COAT)	GALLON	1,448	1,448	
40600300	AGGREGATE (PRIME COAT)	TON	10	10	
44000100	PAVEMENT REMOVAL	SQ YD	571	571	
48101600	AGGREGATE SHOULDERS, TYPE B 8'	SQ YD	440	440	
50100100	REMOVAL OF EXISTING STRUCTURES	EACH	1		1
50200100	STRUCTURE EXCAVATION	CU YD	71		71
59100100 60109580	GEOCOMPOSITE WALL DRAIN PIPE UNDERDRAINS FOR STRUCTURES 4"	SQ YD FOOT	31 78		31 78

80% FED. / 20% STATE

SUMMARY OF QUANTITIES				CONSTRUCTION TYPE CODE	
PAY CODE NUMBER	ITEM	UNIT	TOTAL QUANTITY	1000-2A	X080-2A
				RURAL	RURAL
50300225	CONCRETE STRUCTURES	CU YD	37.4		37.4
50400405	PRECAST PRESTRESSED CONCRETE DECK BEAMS (21" DEPTH)	SQ FT	3,101		3,101
50800205	REINFORCEMENT BARS, EPOXY COATED	POUND	4,546		4,546
50900205	STEEL RAILING, TYPE SI	FOOT	222		222
51201600	FURNISHING STEEL PILES HP 12x53	FOOT	680		680
51202700	DRIVING STEEL PILES	FOOT	680		680
51203600	TEST PILE STEEL HP 12x53	EACH	2		2
51204315	CONCRETE ENCASEMENT	CU YD	31.4		31.4
51500100	NAME PLATES	EACH	1		1
* 63000000	STEEL PLATE BEAM GUARD RAIL, TYPE A	FOOT	287.5	287.5	
* 63000130	STEEL PLATE BEAM GUARD RAIL, TYPE A (SPECIAL)	FOOT	25	25	
* 63100075	TRAFFIC BARRIER TERMINAL, TYPE 5A	EACH	4	4	
* 63100167	TRAFFIC BARRIER TERMINAL TYPE I, SPECIAL (TANGENT)	EACH	4	4	
67000500	ENGINEER'S FIELD OFFICE, TYPE B	CAL MC	3	3	
67100100	MOBILIZATION	L SUM	1	1	
70101830	TRAFFIC CONTROL AND PROTECTION, STANDARD BLR 21	L SUM	1	1	
78200405	GUARDRAIL MARKERS	EACH	8	8	
78201000	TERMINAL MARKER - DIRECT APPLIED	EACH	4	4	
X3550300	BITUMINOUS BASE COURSE SUPERPAVE 6'	SQ YD	2,415	2,415	
X4021000	TEMPORARY ACCESS (PRIVATE ENTRANCE)	EACH	2	2	
X4066426	BITUMINOUS CONCRETE SURFACE COURSE, SUPERPAVE, MIX 4D, N70	TON	271	271	
X5020501	UNDERWATER STRUCTURE EXCAVATION PROTECTION-LOCATION 1	EACH	1		1
X5020502	UNDERWATER STRUCTURE EXCAVATION PROTECTION-LOCATION 2	EACH	1		1

*SPECIALTY ITEMS

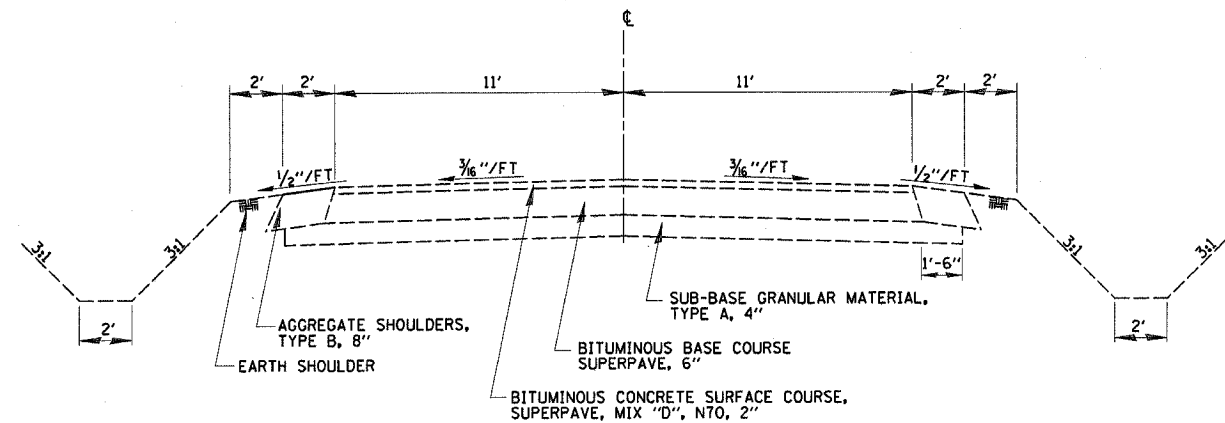
* DENOTES SPECIALTY ITEM

REVISIONS		ILLINOIS DEPARTMENT OF TRANSPORTATION
NAME	DATE	
		SUMMARY OF QUANTITIES

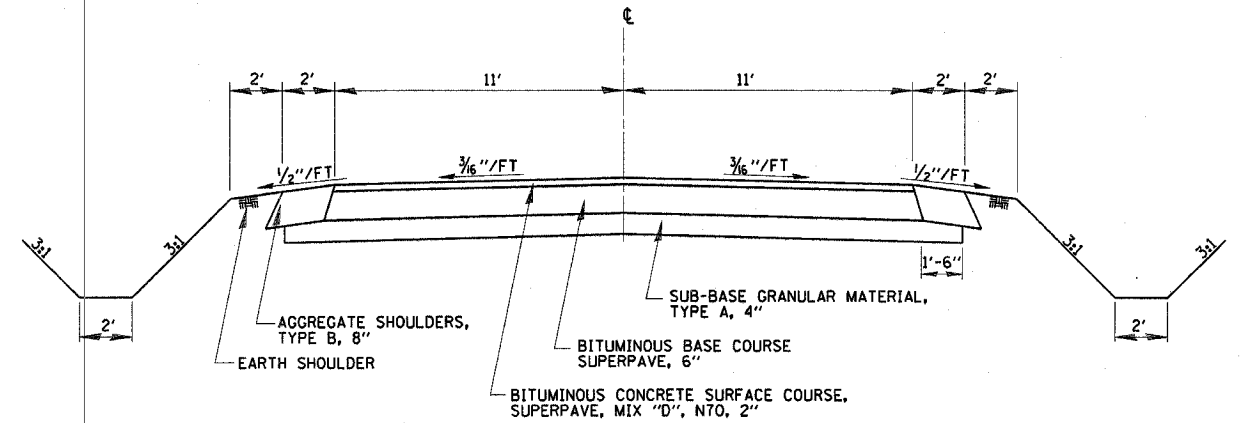
DRAWN BY ASB
CHECKED BY SJK

F.A.P. RTE.	SECTION	COUNTY	TOTAL SHEETS	SHEET NO.
774	(107) N	EFFINGHAM	27	5
FED. ROAD DIST. NO.		ILLINOIS FED. AID PROJECT		

CONTRACT NO. 74131



EXISTING TYPICAL SECTION
 STA. 300+11.00 TO STA. 302+21.59 (1200TH ST CONNECTOR)



PROPOSED TYPICAL SECTION
 STA. 202+00.00 TO STA. 203+77.58 (RELOCATED 1200TH ST)
 STA. 203+77.58 TO STA. 204+90.24 (GREEN CREEK BRIDGE) •
 STA. 204+90.24 TO STA. 213+00.00 (RELOCATED 1200TH ST)

• SEE SHEET # 22 FOR GREEN CREEK BRIDGE TYPICAL

REVISIONS		ILLINOIS DEPARTMENT OF TRANSPORTATION
NAME	DATE	
		TYPICAL SECTIONS

DATE 8/02
 DRAWN BY MLO
 CHECKED BY SJK

CONTRACT NO. 74131

SUB-BASE GRANULAR MATERIAL, TYPE A, 4"			
LOCATION	STATION TO STATION		SQ YD
1200TH ST.	202+00.00	203+77.58	494
1200TH ST.	204+90.24	213+00.00	2250
TOTAL			2744

BITUMINOUS MATERIALS (PRIME COAT)				
LOCATION	STATION TO STATION		OFFSET	GALLONS
BASE COURSE				
1200TH ST.	202+00.00	213+00.00	LT&RT	1207
SURFACE COURSE				
1200TH ST.	202+00.00	213+00.00	LT&RT	241
TOTAL				1448

AGGREGATE (PRIME COAT)				
LOCATION	STATION TO STATION		OFFSET	TONS
BASE COURSE				
1200TH ST.	202+00.00	213+00.00	LT&RT	5
SURFACE COURSE				
1200TH ST.	202+00.00	213+00.00	LT&RT	5
TOTAL				10

AGGREGATE SHOULDERS, TYPE B, 8"				
LOCATION	STATION TO STATION		OFFSET	SQ. YD.
1200TH ST.	202+00.00	203+77.58	RT	40
1200TH ST.	202+00.00	203+77.58	LT	40
1200TH ST.	204+90.24	213+00.00	RT	180
1200TH ST.	204+90.24	213+00.00	LT	180
TOTAL				440

GUARDRAIL MARKERS				
LOCATION	STATION TO STATION		OFFSET	EACH
GREEN CREEK	203+19.43	206+08.61	RT	3
GREEN CREEK	202+59.23	206+85.89	LT	5
TOTAL				8

BITUMINOUS BASE COURSE, SUPERPAVE, 6"				
LOCATION	STATION TO STATION		OFFSET	SQ. YD.
1200TH ST.	202+00.00	203+77.58	LT&RT	435
1200TH ST.	204+90.24	213+00.00	LT&RT	1980
TOTAL				2415

BITUMINOUS CONCRETE SURFACE COURSE, SUPERPAVE, MIX "D", N70				
LOCATION	STATION TO STATION		OFFSET	TONS
1200TH ST.	202+00.00	203+77.58	LT&RT	49
1200TH ST.	204+90.24	213+00.00	LT&RT	222
TOTAL				271

(SEE RURAL ENTRANCE SCHEDULE FOR REMAINING QUANTITIES)

EARTHWORK

LOCATION	STATION TO	STATION	EARTH EXCAVATION (CUT)	*EXCAVATION ADJUSTED FOR SHRINKAGE	EMBANKMENT (FILL)	EARTHWORK BALANCE WASTE (+) SHORTAGE (-)
			CU YD	CU YD	CU YD	CU YD
1200th ST	200+81.00	201+84.00	1,095	820	-	820
1200th ST	202+00.00	203+77.58	75	55	170	-115
1200th ST	204+00.00	213+00.00	2,940	2,205	1,060	1,145
1200th ST CON	300+67.00	302+21.59	1,620	1,215	-	1,215
TOTAL			5,730	4,295	1,230	3,065

*EARTH EXCAVATION MULTIPLIED BY SHRINKAGE FACTOR (1 - 0.25 = 0.75)

SEEDING

STATION TO	STATION	OFFSET	SEEDING CLASS 2A	SEEDING CLASS 4A	SEEDING CLASS 5	NITROGEN FERTILIZER	PHOSPHOROUS FERTILIZER	POTASSIUM FERTILIZER	AGRICULTURAL GROUND LIMESTONE	MULCH METHOD 2	TEMPORARY EROSION CONTROL SEEDING
			ACRE	ACRE	ACRE	POUND	POUND	POUND	TON	TON	POUND
201+00.00	213+00.00	LT	0.75	-	-	68	68	68	1.5	1.5	78
204+00.00	213+00.00	RT	0.50	-	-	45	45	45	1.0	1.0	52
201+00.00	210+00.00	LT	-	2.25	2.25	203	203	203	4.5	4.5	225
208+00.00	213+00.00	RT	-	0.25	0.25	22	22	22	0.5	0.5	25
TOTALS			1.25	2.50	2.50	338	338	338	7.5	7.5	380

REVISIONS	
NAME	DATE

ILLINOIS DEPARTMENT OF TRANSPORTATION

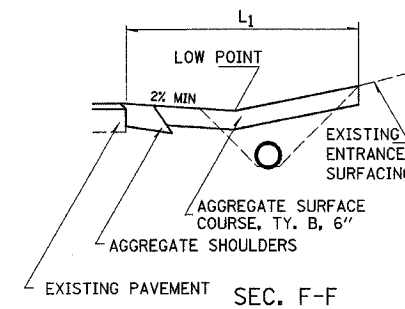
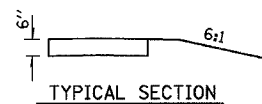
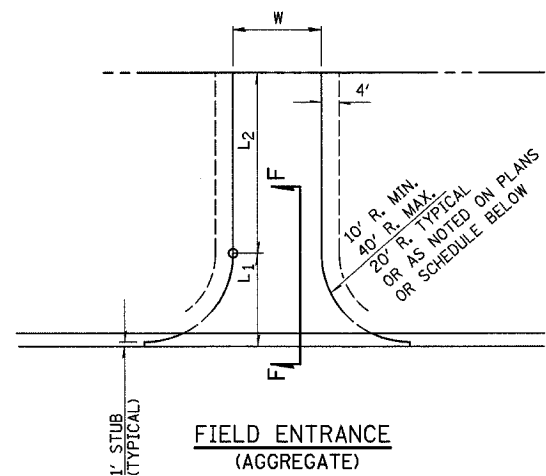
SCHEDULE OF QUANTITIES

DATE 03/03
DRAWN BY ASB
CHECKED BY SJK

F.A.P. RTE.	SECTION	COUNTY	TOTAL SHEETS	SHEET NO.
774	(107) N	EFFINGHAM	27	7
FED. ROAD DIST. NO.	ILLINOIS	FED. AID PROJECT		

CONTRACT NO. 74131

L₁ = DISTANCE FROM EDGE OF PAVEMENT TO RADIUS POINT OR MAX. DISTANCE 30'
L₂ = DISTANCE FROM RADIUS POINT OR MAX DISTANCE 30' OFF EDGE OF PAVEMENT TO R.O.W. LINE.
NOTE: MATERIAL USED TO CONSTRUCT L₂ LENGTH SHALL BE OF THE SAME TYPE OF MATERIAL AS EXISTING ENTRANCE.



ENTRANCE SCHEDULE

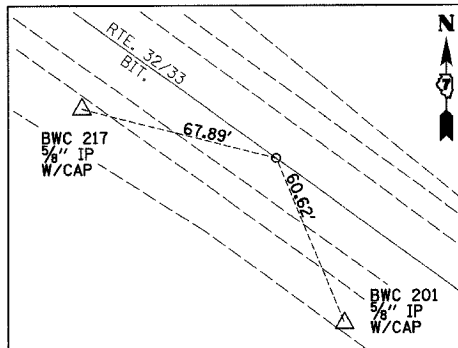
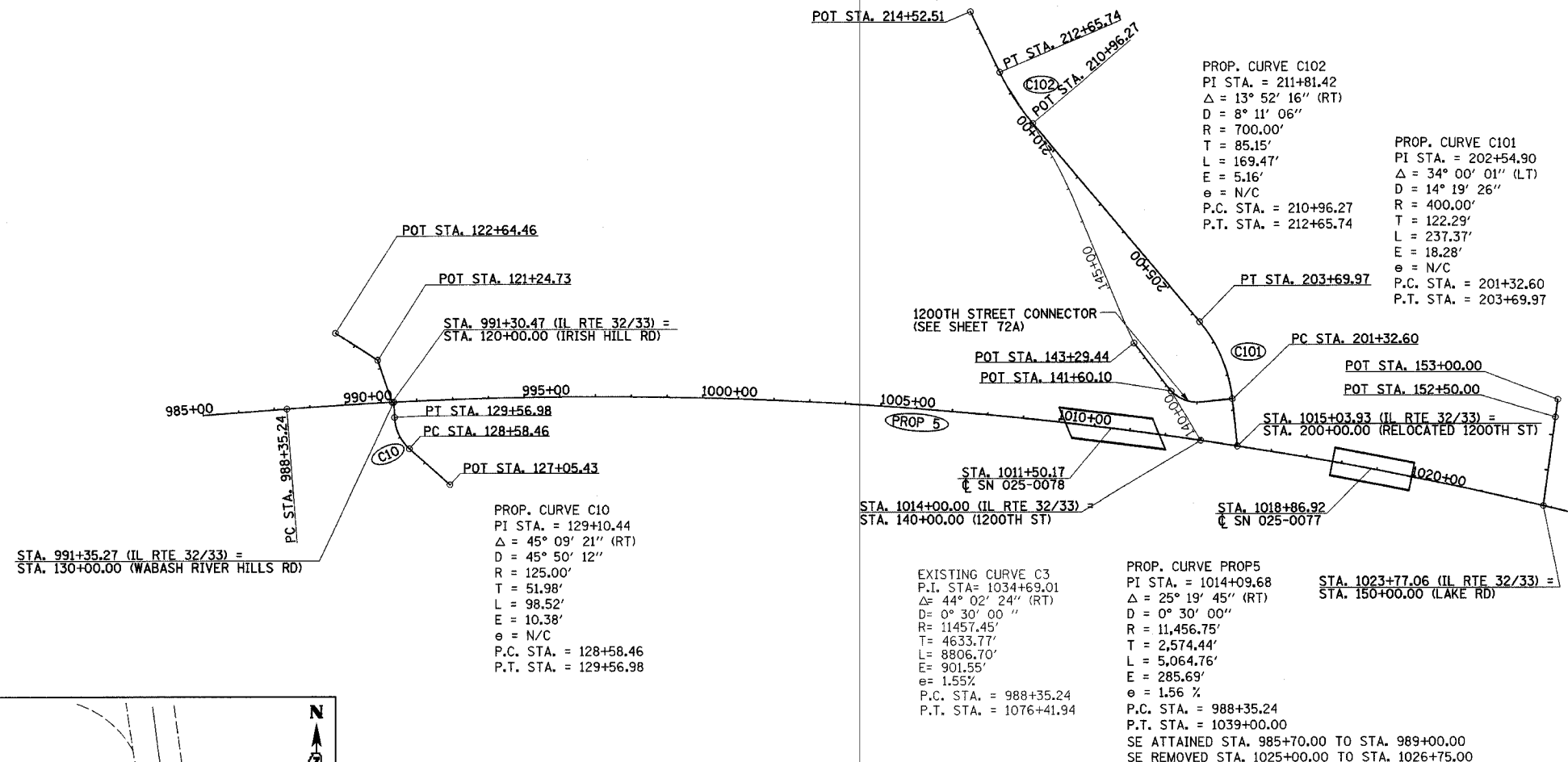
EXIST SURFACE	TYPE	SIDE/ STATION	WIDTH	LENGTH		RADI	AGGREGATE	BITUMINOUS	AGGREGATE	INCID. BIT.	P.C.C.	TEMPORARY	TEMPORARY
				BASE COURSE TYPE B	BASE COURSE SUPERPAVE, 8"		SURFACE COURSE TYPE B	SURFACING, SUPERPAVE, N50	DRIVEWAY PAV'T, 6"	ACCESS (PE)	ACCESS (CE)		
				L ₁	L ₂		TON	SQ. YD.	TON	TON	SO. YD.	EACH	EACH
AGG	FE	RT/203+00.00	12'	-	184'	20'			12			1	
AGG	FE	LT/211+87.45	35'	7'	-	-			7			1	

•DGN-SPEC•
•DATE•

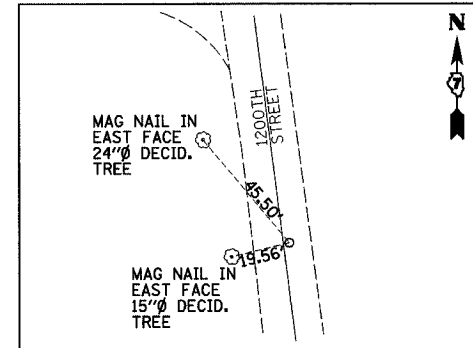
REVISIONS		ILLINOIS DEPARTMENT OF TRANSPORTATION RURAL ENTRANCE DETAILS & SCHEDULES DRAWN BY DIST 7 CHECKED BY BWC DATE 8/02
NAME	DATE	

F.A.P. RTE.	SECTION	COUNTY	TOTAL SHEETS	SHEET NO.
774	(107) N	EFFINGHAM	27	8
FED. ROAD DIST. NO.	ILLINOIS	FED. AID PROJECT		

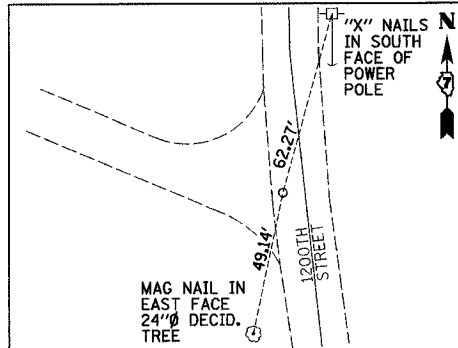
CONTRACT NO. 74131



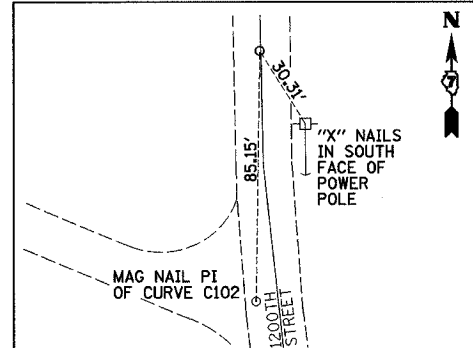
RELOCATED 1200TH STREET STA. 200+00.00 =
 RTE 32/33 STA. 1015+03.93
 (MAG NAIL)



PC PROP. CURVE C102 (RELOCATED 1200TH STREET)
 STA. 210+96.27
 (MAG NAIL)

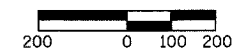


PI PROP. CURVE C102 (RELOCATED 1200TH STREET)
 STA. 211+81.42
 (MAG NAIL)



PT PROP. CURVE C102 (RELOCATED 1200TH STREET)
 STA. 212+65.74
 (MAG NAIL)

BM #9
 121' RT, STA. 991+87, ELEV. 558.84
 CHISELED "X" IN NORTH BOLT OF FIRE
 HYDRANT AT WABASH RIVERHILLS AND
 IL RTE 32/33
 BM #60
 79' RT, STA. 1024+86, ELEV. 548.63
 CHISELED "X" ON NORTH FLANGE BOLT
 OF FIRE HYDRANT



REVISIONS	
NAME	DATE

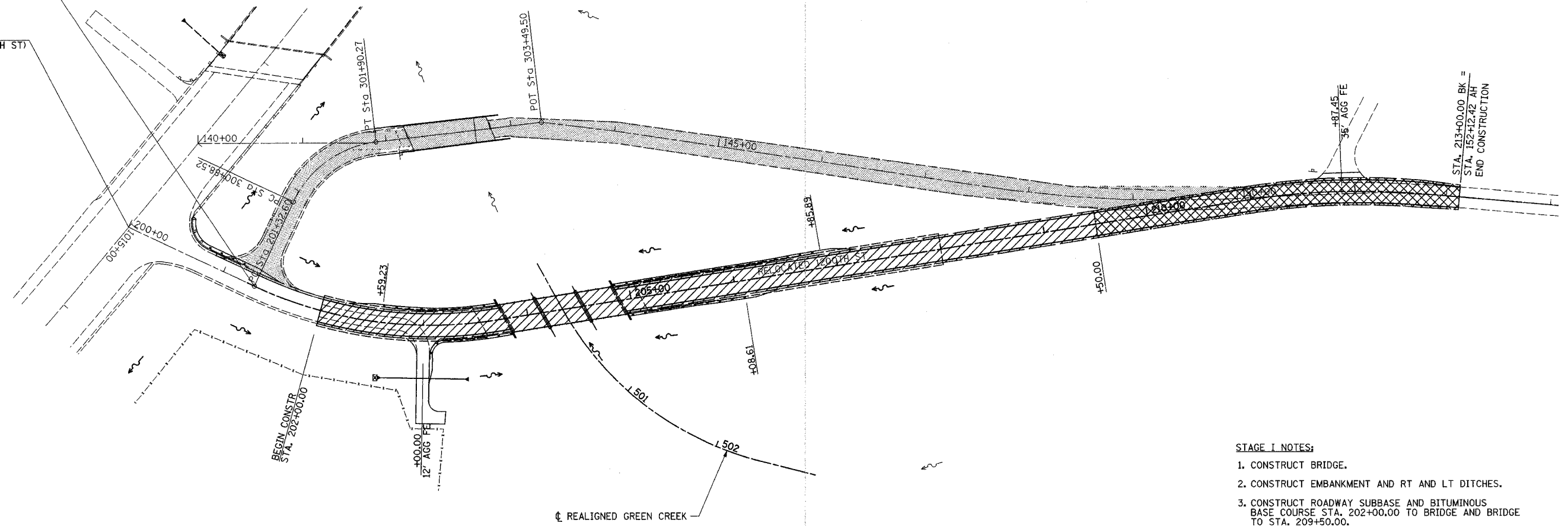
ILLINOIS DEPARTMENT OF TRANSPORTATION
 CONTROL TIES, BENCHMARKS &
 HORIZONTAL ALIGNMENT PLAN
 SCALE: 1"=200'
 DATE 4/22/02
 DRAWN BY NJV
 CHECKED BY BKB

F.A.P. RTE.	SECTION	COUNTY	TOTAL SHEETS	SHEET NO.
774	(107) N	EFFINGHAM	27	9
STA.		TO STA.		
FED. ROAD DIST. NO.	ILLINOIS	FED. AID PROJECT		

CONTRACT NO. 74131

STA. 201+32.60 (RELOCATED 1200TH ST) =
STA. 300+00.00 (1200TH ST CONNECTOR)

STA. 1015+03.93 (IL RTE 32/33) =
STA. 200+00.00 (RELOCATED 1200TH ST)



STAGE I NOTES:

1. CONSTRUCT BRIDGE.
2. CONSTRUCT EMBANKMENT AND RT AND LT DITCHES.
3. CONSTRUCT ROADWAY SUBBASE AND BITUMINOUS BASE COURSE STA. 202+00.00 TO BRIDGE AND BRIDGE TO STA. 209+50.00.

STAGE II NOTES:

1. CLOSE 1200TH STREET.
2. CONSTRUCT EMBANKMENT, SUBBASE, BASE COURSE STA. 209+50.00 TO 213+00.00.
3. CONSTRUCT SURFACING 202+00.00 TO BRIDGE AND BRIDGE TO STA. 213+00.00.
4. REMOVE EXISTING BRIDGE AND EXISTING ROADWAY.

LEGEND

- STAGE I
- STAGE II
- REMOVAL, STAGE III

REVISIONS	
NAME	DATE

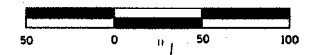
ILLINOIS DEPARTMENT OF TRANSPORTATION

TRAFFIC CONTROL PLAN

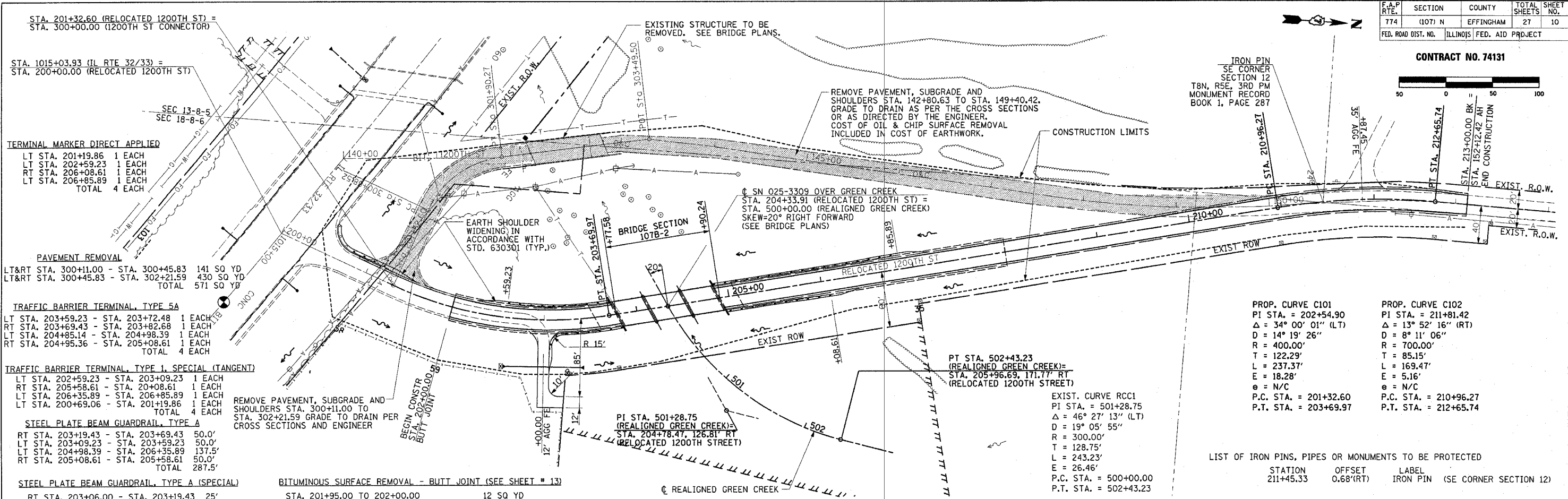
SCALE: VERT.
DATE: HORIZ.

DRAWN BY
CHECKED BY

CONTRACT NO. 74131



IRON PIN
SE CORNER
SECTION 12
T8N, R5E, 3RD PM
MONUMENT RECORD
BOOK 1, PAGE 287



- TERMINAL MARKER DIRECT APPLIED**
- LT STA. 201+19.86 1 EACH
 - LT STA. 202+59.23 1 EACH
 - RT STA. 206+08.61 1 EACH
 - LT STA. 206+85.89 1 EACH
 - TOTAL 4 EACH

- PAVEMENT REMOVAL**
- LT&RT STA. 300+11.00 - STA. 300+45.83 141 SQ YD
 - LT&RT STA. 300+45.83 - STA. 302+21.59 430 SQ YD
 - TOTAL 571 SQ YD

- TRAFFIC BARRIER TERMINAL, TYPE 5A**
- LT STA. 203+59.23 - STA. 203+72.48 1 EACH
 - RT STA. 203+69.43 - STA. 203+82.68 1 EACH
 - LT STA. 204+85.14 - STA. 204+98.39 1 EACH
 - RT STA. 204+95.36 - STA. 205+08.61 1 EACH
 - TOTAL 4 EACH

- TRAFFIC BARRIER TERMINAL, TYPE 1, SPECIAL (TANGENT)**
- LT STA. 202+59.23 - STA. 203+09.23 1 EACH
 - RT STA. 205+58.61 - STA. 20+08.61 1 EACH
 - LT STA. 206+35.89 - STA. 206+85.89 1 EACH
 - LT STA. 200+69.06 - STA. 201+19.86 1 EACH
 - TOTAL 4 EACH

- STEEL PLATE BEAM GUARDRAIL, TYPE A**
- RT STA. 203+19.43 - STA. 203+69.43 50.0'
 - LT STA. 203+09.23 - STA. 203+59.23 50.0'
 - LT STA. 204+98.39 - STA. 206+35.89 137.5'
 - RT STA. 205+08.61 - STA. 205+58.61 50.0'
 - TOTAL 287.5'

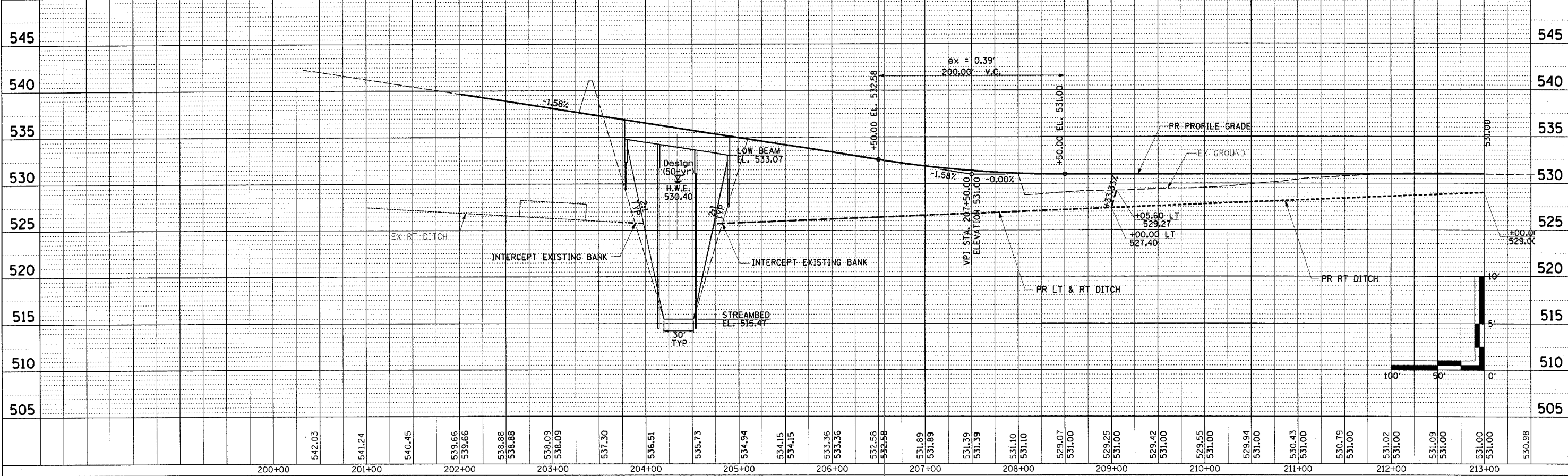
- STEEL PLATE BEAM GUARDRAIL, TYPE A (SPECIAL)**
- RT STA. 203+06.00 - STA. 203+19.43 25'

- BITUMINOUS SURFACE REMOVAL - BUTT JOINT (SEE SHEET # 13)**
- STA. 201+95.00 TO 202+00.00 12 SQ YD

- PROF. CURVE C101**
- PI STA. = 202+54.90
 - $\Delta = 34^\circ 00' 01''$ (LT)
 - D = 14° 19' 26"
 - R = 400.00'
 - T = 122.29'
 - L = 237.37'
 - E = 18.28'
 - $\theta = N/C$
 - P.C. STA. = 201+32.60
 - P.T. STA. = 203+69.97
- PROF. CURVE C102**
- PI STA. = 211+81.42
 - $\Delta = 13^\circ 52' 16''$ (RT)
 - D = 8° 11' 06"
 - R = 700.00'
 - T = 85.15'
 - L = 169.47'
 - E = 5.16'
 - $\theta = N/C$
 - P.C. STA. = 210+96.27
 - P.T. STA. = 212+65.74

- EXIST. CURVE RCC1**
- PI STA. = 501+28.75
 - $\Delta = 46^\circ 27' 13''$ (LT)
 - D = 19° 05' 55"
 - R = 300.00'
 - T = 128.75'
 - L = 243.23'
 - E = 26.46'
 - P.C. STA. = 500+00.00
 - P.T. STA. = 502+43.23

- LIST OF IRON PINS, PIPES OR MONUMENTS TO BE PROTECTED**
- | STATION | OFFSET | LABEL |
|-----------|-----------|---------------------------------|
| 211+45.33 | 0.68'(RT) | IRON PIN (SE CORNER SECTION 12) |



F.A.P. RTE.	SECTION	COUNTY	TOTAL SHEETS	SHEET NO.
774	(107) N	EFFINGHAM	27	11
FED. ROAD DIST. NO.	ILLINOIS	FED. AID PROJECT		

CONTRACT NO. 74131

EROSION CONTROL GENERAL NOTES

DESCRIPTION OF STABILIZATION PRACTICES AT THE BEGINNING OF CONSTRUCTION:

- THE AREA BETWEEN THE EXISTING RIGHT-OF-WAY / TEMPORARY EASEMENT BOUNDARIES AND LIMITS OF THE PROJECT WILL BE IMPROVED AND MANAGED FOR THE PURPOSES OF CONTROLLING EROSION WITHIN THE AREA, REDUCING WATER FLOW BY TEMPORARY DIVERSION AND MINIMIZING SILTATION INTO THE CONSTRUCTION ZONE, AND ESTABLISHING VEGETATIVE COVER WHICH WILL BECOME PERMANENT VEGETATION AND ACT AS AN EROSION BARRIER. WORK AT THE BEGINNING OF THE CONSTRUCTION WILL CONSIST OF THE FOLLOWING:
 - AREAS OF EXISTING VEGETATION (WOODS AND GRASSLANDS) OUTSIDE THE PROPOSED CONSTRUCTION SLOPE LIMITS SHALL BE IDENTIFIED FOR PRESERVING AND SHALL BE PROTECTED FROM MOWING, BRUSH CUTTING, TREE REMOVAL AND OTHER ACTIVITIES WHICH WOULD BE DETRIMENTAL TO THEIR MAINTENANCE AND DEVELOPMENT.
 - DEAD, DISEASED, OR UNSUITABLE VEGETATION WITHIN THE SITE SHALL BE REMOVED AS DIRECTED BY THE ENGINEER.
 - AS SOON AS REASONABLE ACCESS IS AVAILABLE (SUCH AS TREES CLEARED) TO ALL LOCATIONS WHERE WATER DRAINS AWAY FROM THE PROJECT, AGGREGATE DITCH CHECKS AND/OR EROSION CONTROL FENCE SHALL BE INSTALLED AS CALLED OUT IN THIS PLAN AND DIRECTED BY THE ENGINEER.
 - BARE AND SPARSELY VEGETATED GROUND IN HIGHLY ERODABLE AREAS AS DETERMINED BY THE ENGINEER SHALL BE TEMPORARILY SEEDED AT THE BEGINNING OF THE CONSTRUCTION WHERE NO CONSTRUCTION ACTIVITIES ARE EXPECTED WITHIN FOURTEEN DAYS.
 - AT LOCATIONS WHERE A SIGNIFICANT AMOUNT OF WATER DRAINS INTO THE CONSTRUCTION ZONE FROM OUTSIDE AREAS (ADJACENT LANDOWNERS), AGGREGATE DITCH CHECKS WILL BE UTILIZED TO LOCALLY DIVERT WATER, REDUCE FLOW RATES, AND COLLECT OUTSIDE SILTATION INSIDE OF RIGHT-OF-WAY LINE.

DESCRIPTION OF STABILIZATION PRACTICES DURING CONSTRUCTION:

- DURING ROADWAY CONSTRUCTION, AREAS OUTSIDE THE CONSTRUCTION SLOPE LIMITS AS OUTLINED PREVIOUSLY HEREIN SHALL BE PROTECTED FROM DAMAGING EFFECTS OF CONSTRUCTION. THE CONTRACTOR SHALL NOT USE THIS AREA FOR STAGING (EXCEPT AS DESIGNATED ON THE PLANS OR DIRECTED BY THE ENGINEER), PARKING OF VEHICLES OR CONSTRUCTION EQUIPMENT, STORAGE OF MATERIALS, OR OTHER CONSTRUCTION RELATED ACTIVITIES.
 - WITHIN THE CONSTRUCTION ZONE, CRITICAL AREAS WHICH HAVE HIGH FLOWS OF WATER AS DETERMINED BY THE ENGINEER SHALL REMAIN UNDISTURBED UNTIL FULL SCALE CONSTRUCTION IS UNDERWAY TO PREVENT UNNECESSARY SOIL EROSION.
 - EARTH STOCKPILES SHALL BE TEMPORARILY SEEDED IF THEY ARE TO REMAIN UNUSED FOR MORE THAN FOURTEEN DAYS.
 - AS THE CONTRACTOR CONSTRUCTS A PORTION OF ROADWAY IN A FILL SECTION, HE/SHE SHALL FOLLOW THE FOLLOWING STEPS AS DIRECTED BY THE ENGINEER:
 - PLACE TEMPORARY EROSION CONTROL SYSTEMS AT LOCATIONS WHERE WATER LEAVES AND RETURNS FROM CONSTRUCTION ZONE.
 - TEMPORARILY SEED HIGHLY ERODABLE AREAS OUTSIDE THE CONSTRUCTION SLOPE LIMITS.
 - CONSTRUCT ROADSIDE DITCHES AND PROVIDE TEMPORARY EROSION CONTROL SYSTEMS.
 - TEMPORARILY DIVERT WATER AROUND PROPOSED CULVERT LOCATIONS.
 - BUILD NECESSARY EMBANKMENTS AT CULVERT LOCATIONS AND THEN EXCAVATE AND PLACE CULVERT.
 - CONTINUE BUILDING UP THE EMBANKMENT TO THE PROPOSED GRADE WHILE AT THE SAME TIME CONDUCTING FINAL SHAPING TO THE SLOPES.
 - EXCAVATED AREAS AND EMBANKMENTS SHALL BE PERMANENTLY SEEDED WHEN FINAL GRADED. IF NOT, THEY SHALL BE TEMPORARILY SEEDED IF NO CONSTRUCTION ACTIVITY IN THE AREA IS PLANNED FOR FOURTEEN DAYS.
 - CONSTRUCTION EQUIPMENT SHALL BE STORED AND FUELED ONLY AT DESIGNATED LOCATIONS. ALL NECESSARY MEASURES SHALL BE TAKEN TO CONTAIN ANY FUEL OR POLLUTION RUN-OFF IN COMPLIANCE WITH EPA WATER QUALITY REGULATIONS. LEAKING EQUIPMENT SHALL BE IMMEDIATELY REPAIRED OR REMOVED FROM THE SITE.
 - THE RESIDENT ENGINEER SHALL INSPECT THE PROJECT DAILY DURING CONSTRUCTION ACTIVITIES. INSPECTION SHALL ALSO BE DONE WEEKLY AND AFTER LARGE RAINS DURING THE WINTER SHUT-DOWN PERIOD. THE PROJECT SHALL ADDITIONALLY BE INSPECTED BY THE CONSTRUCTION FIELD ENGINEER ON A BI-WEEKLY BASIS TO DETERMINE THAT EROSION CONTROL EFFORTS ARE IN PLACE AND EFFECTIVE AND IF OTHER EROSION CONTROL WORK IS NECESSARY.
 - SEDIMENT COLLECTED DURING CONSTRUCTION BY THE VARIOUS EROSION CONTROL SYSTEMS SHALL BE DISPOSED OF ON THE SITE ON A REGULAR BASIS (OR WHEN 50 PERCENT FULL) AS DIRECTED BY THE ENGINEER. THE COST OF THIS MAINTENANCE SHALL BE PAID FOR ACCORDING TO ARTICLE 109.04 OF THE STANDARD SPECIFICATIONS.
 - THE TEMPORARY EROSION CONTROL SYSTEMS SHALL BE REMOVED AS DIRECTED BY THE ENGINEER AFTER USE IS NO LONGER NEEDED OR NO LONGER FUNCTIONING. THE COST OF THIS REMOVAL SHALL BE INCLUDED IN THE UNIT BID PRICE FOR THE TEMPORARY EROSION CONTROL SYSTEM. NO ADDITIONAL COMPENSATION WILL BE ALLOWED.

DESCRIPTION OF STABILIZATION PRACTICES AFTER FINAL GRADING:

- TEMPORARY EROSION CONTROL SYSTEMS SHALL BE LEFT IN PLACE WITH PROPER MAINTENANCE UNTIL PERMANENT EROSION CONTROL IS IN PLACE AND WORKING PROPERLY AND ALL PROPOSED TURF AREAS SEEDED AND ESTABLISHED WITH PROPER STAND.
- ONCE PERMANENT EROSION CONTROL SYSTEMS AS PROPOSED IN THE PLANS ARE FUNCTIONING AND ESTABLISHED, TEMPORARY ITEMS SHALL BE REMOVED, CLEANED UP, AND DISTURBED TURF RESEEDED.

TEMPORARY DITCH CHECKS		
STA.	QUANTITY (EACH)	
	LT	RT
203+50.00	1	1
206+00.00	1	1
211+16.00		1
211+24.00	1	
SUB-TOTAL	3	3
TOTAL 6		

INLET AND PIPE PROTECTION		
STATION	OFFSET	QUANTITY (EACH)
202+55.00	RT	1
TOTAL 1		

PERIMETER EROSION BARRIER (SILT FENCE)		
STATION	LT	RT
1200+th AVE 203+70.00	15'	15'
1200+th AVE 205+00.00	15'	15'
204+00.00-210+00.00	600'	
204+00.00-208+00.00	400'	
SUB-TOTAL	1030'	30'
TOTAL 1060'		

STONE RIP RAP, CLASS A4	
STATION TO STATION	SQ YD
RT 500+80.00 TO RT 504+45.00	1135
TOTAL 1135	

FILTER FABRIC	
STATION TO STATION	SQ YD
RT 500+80.00 TO RT 504+45.00	1135
TOTAL 1135	

REVISIONS	
NAME	DATE

ILLINOIS DEPARTMENT OF TRANSPORTATION

EROSION CONTROL PLAN
GENERAL NOTES & SCHEDULES
SHEET 1 OF 2

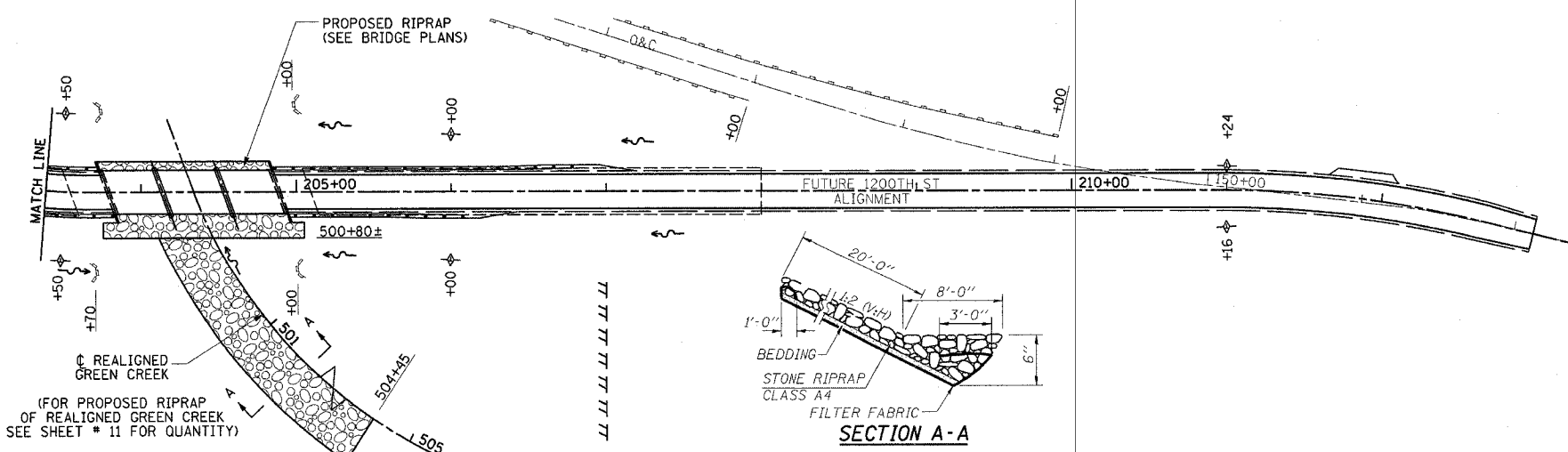
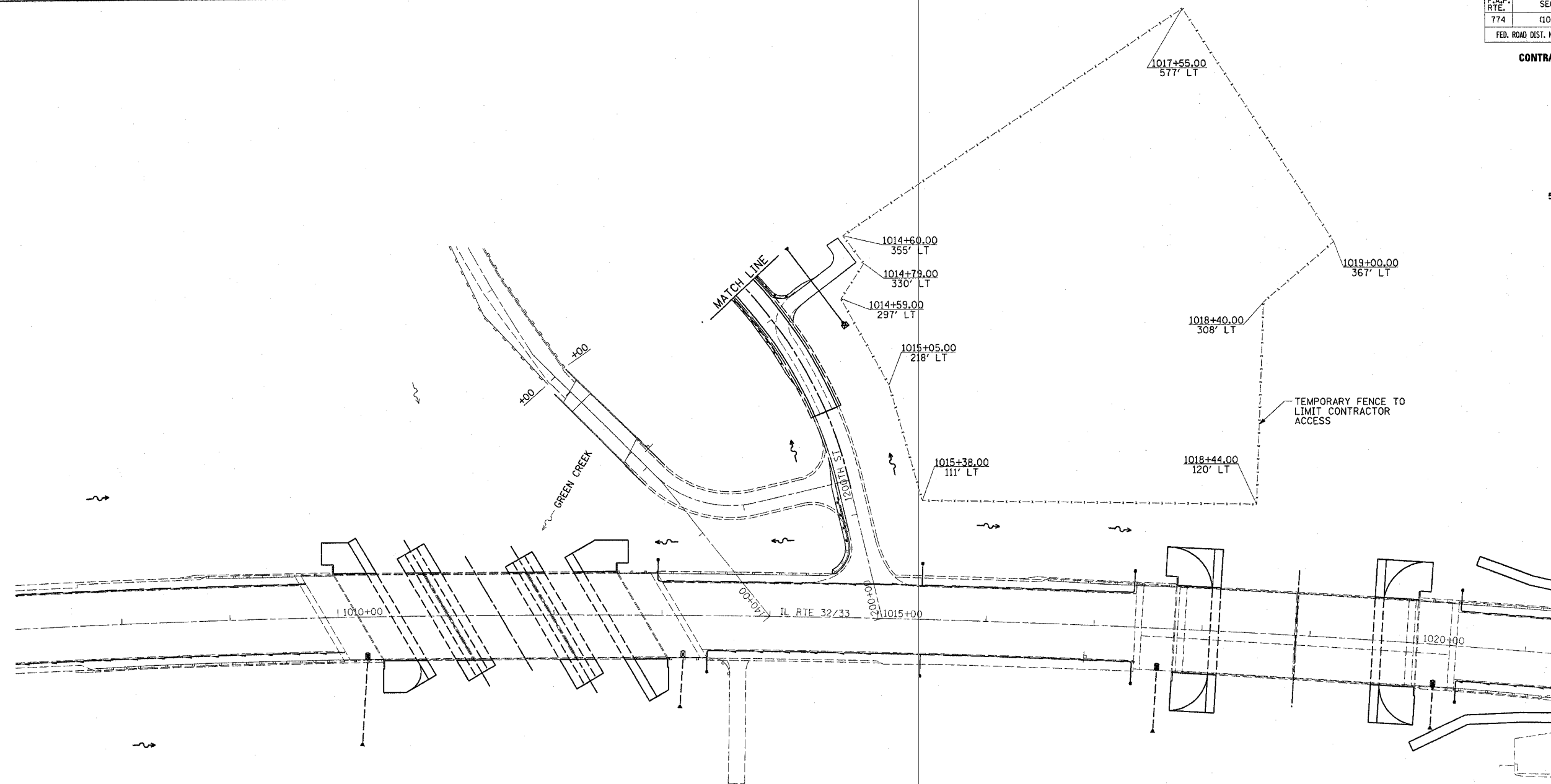
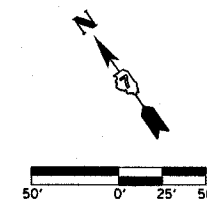
DATE 8/02

DRAWN BY MLO

CHECKED BY SJK

F.A.P. RTE.	SECTION	COUNTY	TOTAL SHEETS	SHEET NO.
774	(107) N	EFFINGHAM	27	12
FED. ROAD DIST. NO.	ILLINOIS	FED. AID PROJECT		

CONTRACT NO. 74131



LEGEND

- INLET AND PIPE PROTECTION
- TEMPORARY DITCH CHECKS
- PERIMETER EROSION BARRIER
- EROSION CONTROL BLANKET
- STONE RIPRAP CLASS A4 OR GABIONS

REVISIONS	
NAME	DATE

ILLINOIS DEPARTMENT OF TRANSPORTATION

EROSION CONTROL PLAN
SHEET 2 OF 2

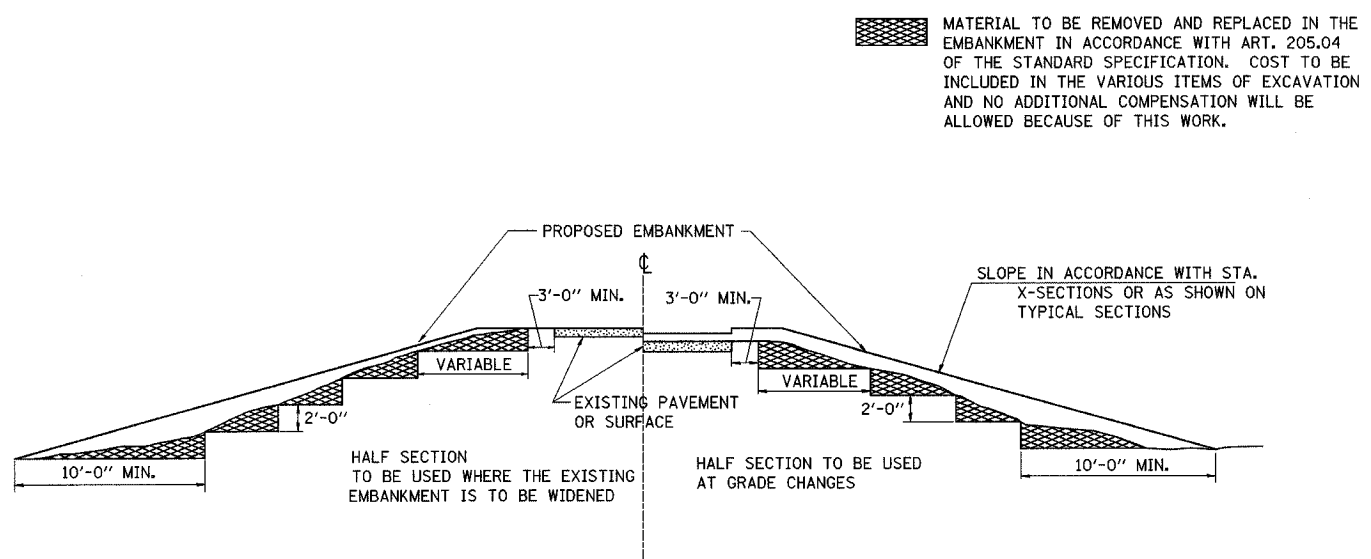
DATE 8/02

DRAWN BY ASB
CHECKED BY SJK

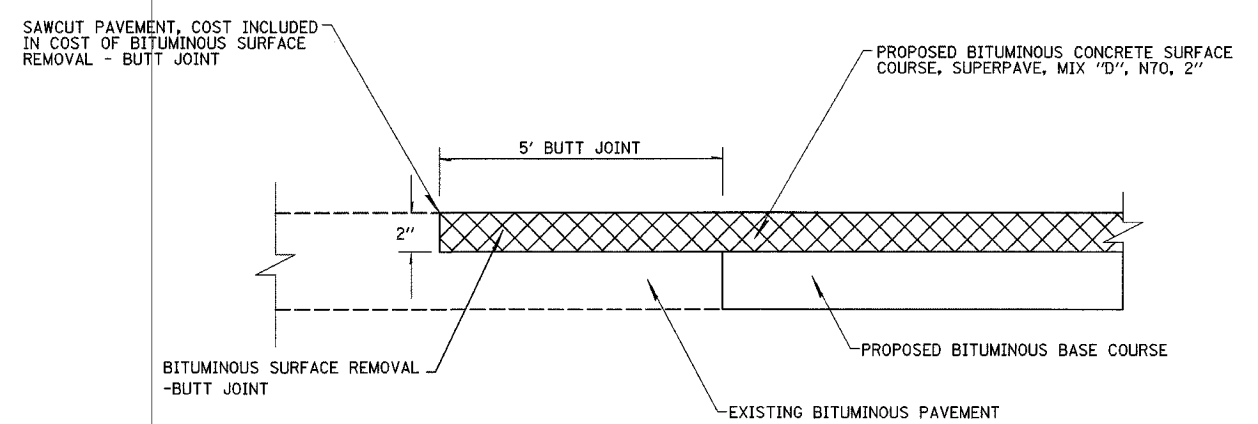
4/25/06

F.A.P. RTE.	SECTION	COUNTY	TOTAL SHEETS	SHEET NO.
774	(107) N	EFFINGHAM	27	13
FED. ROAD DIST. NO.	ILLINOIS FED. AID PROJECT			

CONTRACT NO. 74131

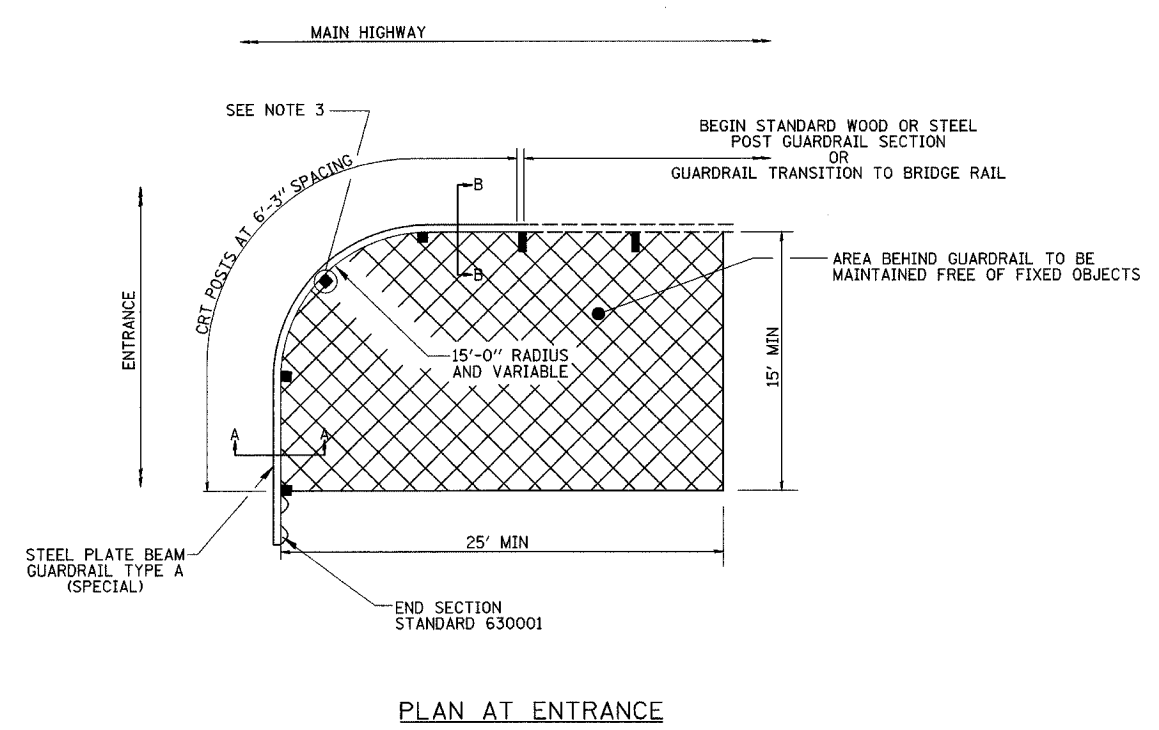


TYPICAL CROSS SECTION SHOWING STEP CONSTRUCTION ON EXISTING FILL

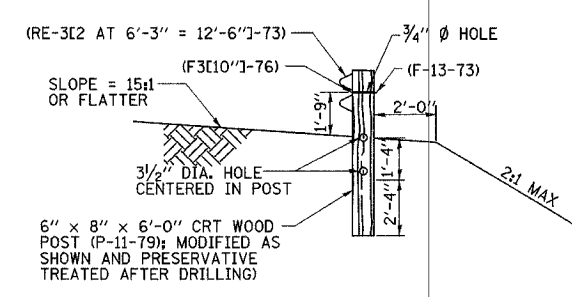


BITUMINOUS SURFACE REMOVAL-BUTT JOINT DETAIL

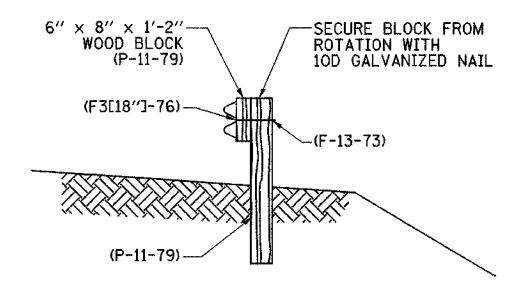
BITUMINOUS SURFACE REMOVAL - BUTT JOINT



PLAN AT ENTRANCE



SECTION A-A



SECTION B-B

NOTES:

1. DESIGNATIONS PROVIDED IN PARENTHESIS REFERENCE STANDARD ELEMENTS DETAILED IN "A GUIDE TO STANDARDIZED HIGHWAY BARRIER ROLL HARDWARE," 1979, AASHTO-AGC-ARTBA JOINT COOPERATIVE COMMITTEE.
2. NO WASHERS ARE USED ON THE 16 BUTTON HEAD BOLTS (F-3IAS REQUIRED]-76) CONNECTING THE RAIL TO THE CONTROLLED RELEASING TERMINAL (CRT) POSTS.
3. THE RAIL IS NOT BOLTED TO THE CRT POST AT THE CENTER OF THE NOSE AS SHOWN.
4. THE CURVED GUARDRAIL SECTION SHALL BE SHOP BENT.
5. CURVED GUARDRAIL DETAIL WILL BE PAID FOR AT THE CONTRACT UNIT PRICE PER FOOT FOR STEEL PLATE BEAM GUARDRAIL TYPE A (SPECIAL), WHICH PRICE SHALL INCLUDE A COMPLETE CURVED GUARDRAIL DETAIL IN PLACE.

REVISIONS	
NAME	DATE

ILLINOIS DEPARTMENT OF TRANSPORTATION

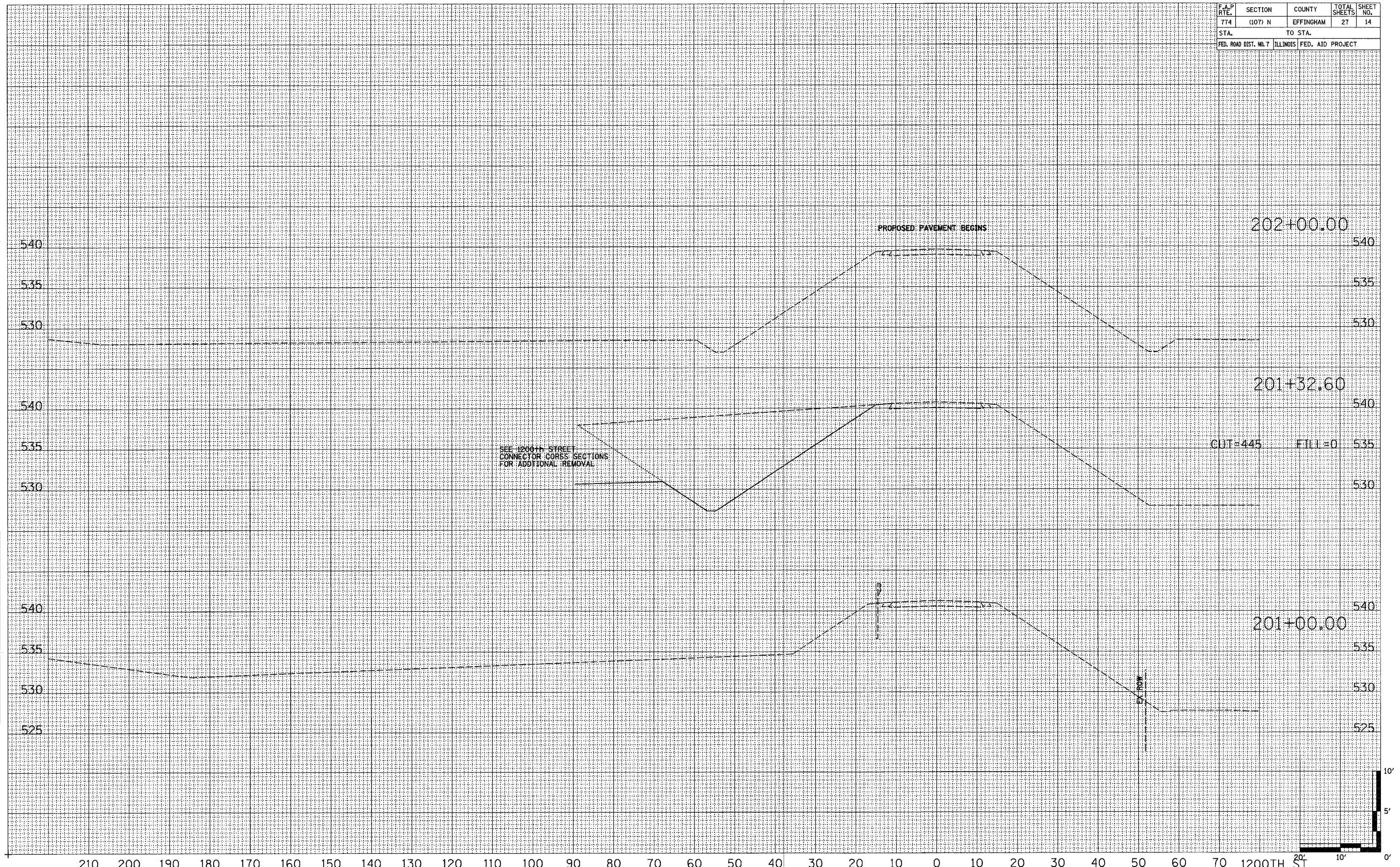
MISCELLANEOUS ROADWAY DETAILS

DRAWN BY DIST. 7
CHECKED BY BWC
DATE 8/02

F.A.P. RTE. 774	SECTION (107) N	COUNTY EFFINGHAM	TOTAL SHEETS 27	SHEET NO. 14
STA. FED. ROAD DIST. NO. 7		TO STA. ILLINOIS FED. AID PROJECT		

DATE	
BY	
FINAL SURVEY	
SURVEYED	
NOTE BOOK	
NO.	
TEMPLATE	
AREAS CHECKED	

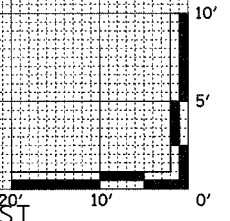
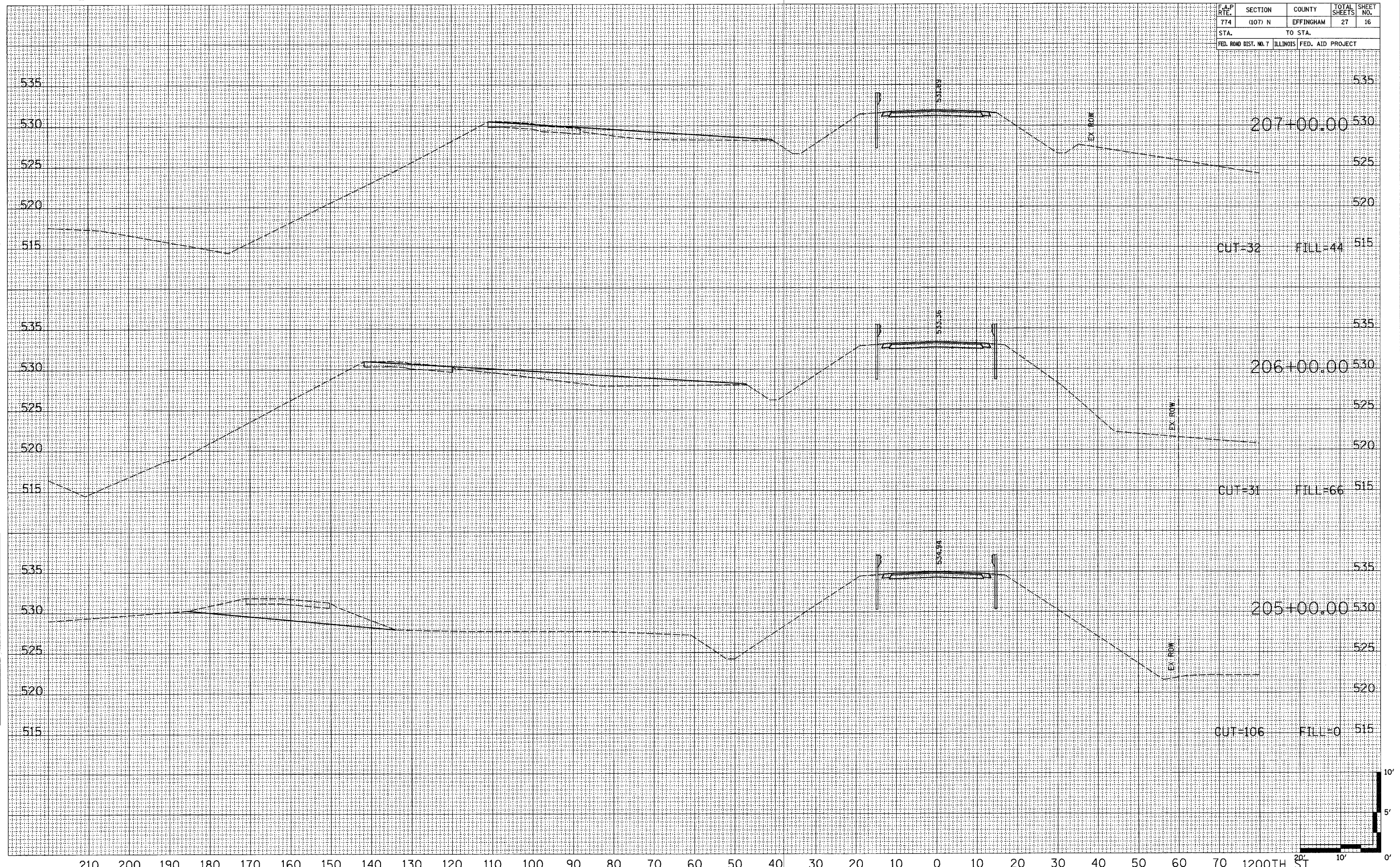
DATE	
BY	
ORIGINAL SURVEY	
SURVEYED	
NOTE BOOK	
NO.	
TEMPLATE	
AREAS CHECKED	



F.A.P. RTE.	SECTION	COUNTY	TOTAL SHEETS	SHEET NO.
774	(107) N	EFFINGHAM	27	16
STA.		TO STA.		
FED. ROAD DIST. NO. 7		ILLINOIS FED. AID PROJECT		

FINAL SURVEY	SURVEYED	DATE
NOTE BOOK	BY	
NO.	NO.	
	AREAS CHECKED	

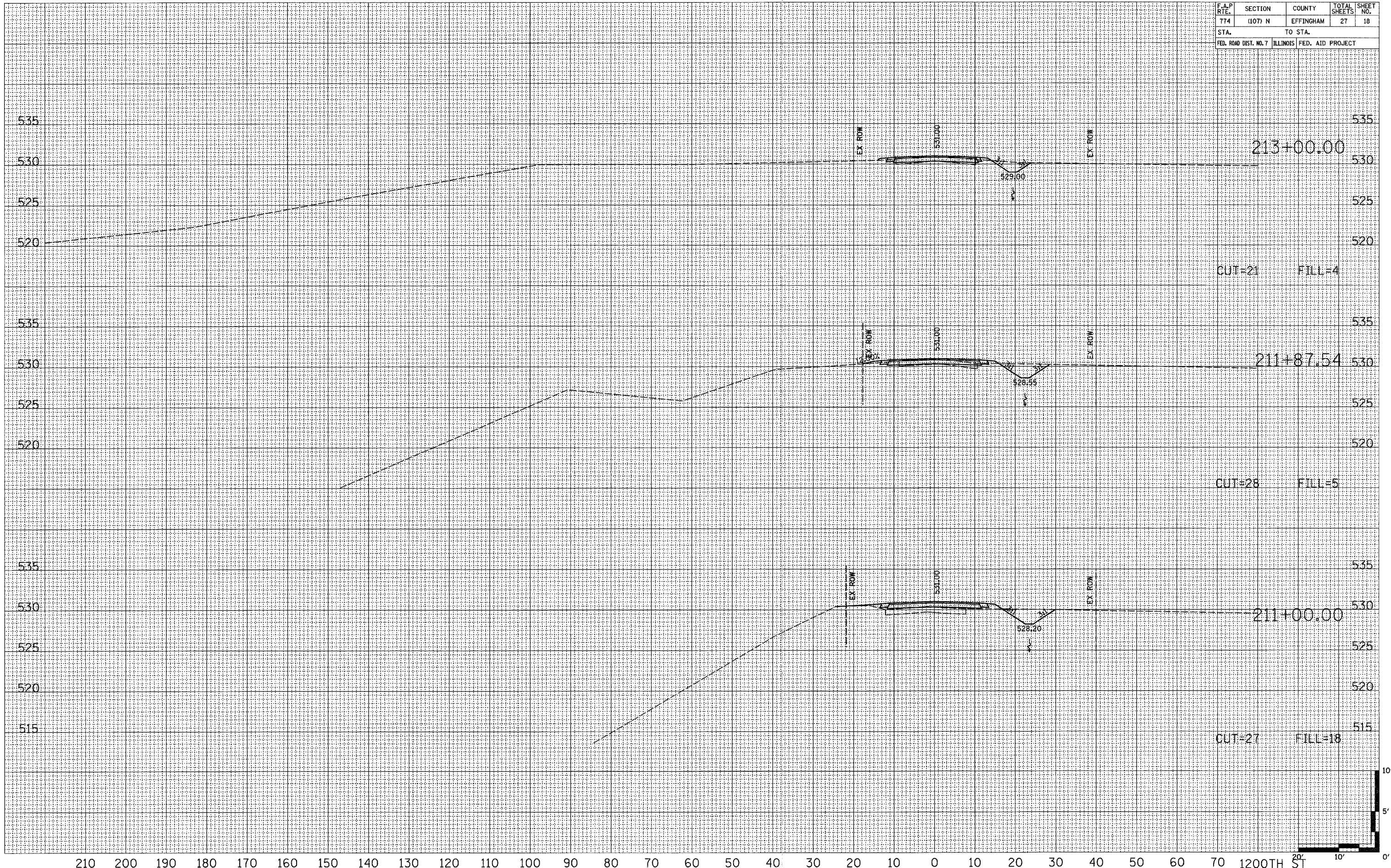
ORIGINAL SURVEY	SURVEYED	DATE
NOTE BOOK	BY	
NO.	NO.	
	AREAS CHECKED	



F.A.P. RTE.	SECTION	COUNTY	TOTAL SHEETS	SHEET NO.
774	(107) N	EFFINGHAM	27	18
STA.		TO STA.		
FED. ROAD DIST. NO. 7		ILLINOIS FED. AID PROJECT		

DATE	
BY	
FINAL SURVEY	
SURVEYED	
PLOTTED	
NOTE BOOK	
AREAS CHECKED	

DATE	
BY	
ORIGINAL SURVEY	
SURVEYED	
PLOTTED	
NOTE BOOK	
AREAS CHECKED	



CUT=21 FILL=4

CUT=28 FILL=5

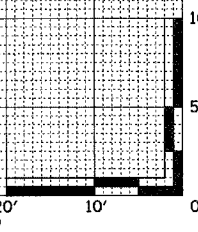
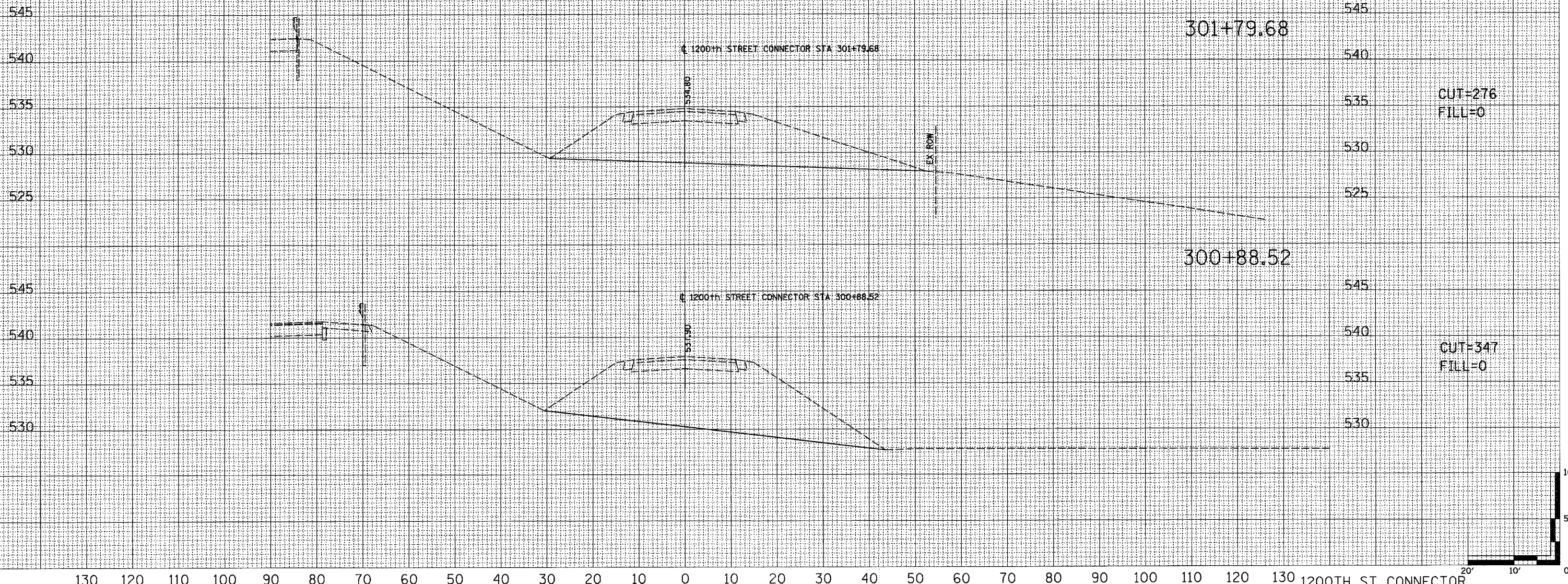
CUT=27 FILL=18

F.A.P. RTE.	SECTION	COUNTY	TOTAL SHEETS	SHEET NO.
774	(107) N	EFFINGHAM	27	19
STA. 541+00.00		TO STA. 544+00.00		
FED. ROAD DIST. NO. 7		ILLINOIS FED. AID PROJECT		

130 120 110 100 90 80 70 60 50 40 30 20 10 0 10 20 30 40 50 60 70 80 90 100 110 120 130

DATE	
BY	
FINAL SURVEY	
SURVEYED	
PLOTTED	
NOTE BOOK	
NO.	
AREAS CHECKED	

DATE	
BY	
ORIGINAL SURVEY	
SURVEYED	
PLOTTED	
NOTE BOOK	
NO.	
AREAS CHECKED	



STATE OF ILLINOIS
DEPARTMENT OF TRANSPORTATION

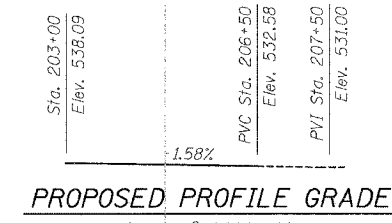
ROUTE NO.	SECTION	COUNTY	SHEETS	DATE	SHEET NO. 1
FAP 774	107B-2	EFFINGHAM	27	20	8 SHEETS
FED. ROAD DIST. NO. 7	ILLINOIS	FED. AID PROJECT-	CONTRACT NO. 74131		

Bench Mark : Chiseled "□" above bridge name plate on SNO25-0077 (IL 32/33 overflow structure) Elev. 543.66
Existing Structure : SN 025-3161, built in 1982 as TR-160 SEC. 80-03109-00-BR at Sta. 50+12.
Single span precast reinforced concrete deck beam bridge abutments on steel H-piling, 80'-0" back to back of abutments, 25'-0" overall width. The existing structure shall remain open to traffic until the proposed structure and relocated road are open to traffic; the existing structure and roadway shall then be removed.
No staging is required.
Proposed Structure: Three span PPC Deck Beam Structure on pile bent abutments and pile bent piers.
Salvage : Deck beams and railing to be salvaged and delivered to a location (within 15 miles travel distance) designated by the Douglas Township Commissioner, Mr. Clem Kaufman
Maintenance Building: (217) 347-5734 Cell Phone: (217) 254-5734

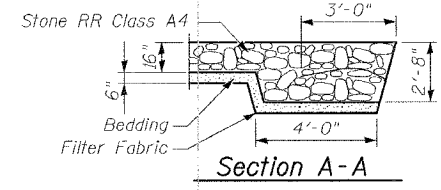
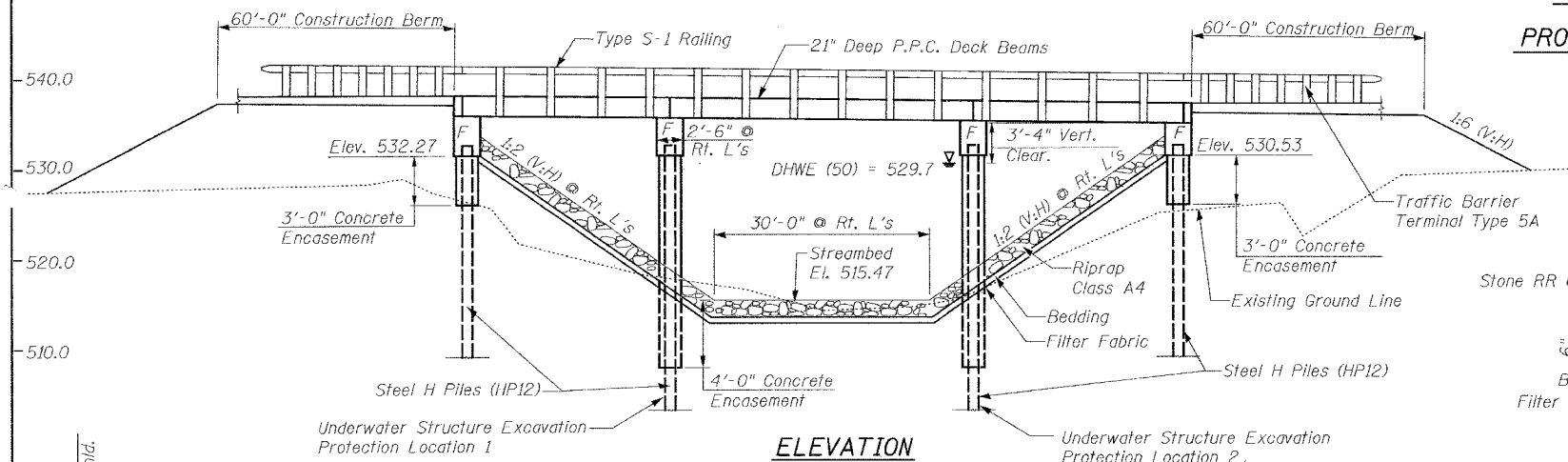
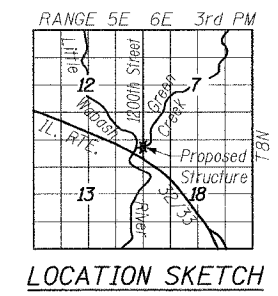
STATION 204+33.91
BUILT 200 BY
STATE OF ILLINOIS
TR 160
SECTION 107B-2
LOADING HS20
STR. NO. 025-3309

GENERAL NOTES

- The Contractor shall drive 2 HP12 test piles, as specified, in a permanent location, one at the North Abutment and one at Pier #1, as directed by the Engineer before ordering the remaining piles.
- Class S1 Concrete shall be used throughout except in the deck beams.
- Layout of the slope protection system may be varied in the field to suit ground conditions as directed by the Engineer.
- The embankment configuration shown shall be the minimum embankment that must be constructed prior to construction of abutments.
- All construction joints shall be bonded.



NAME PLATE
Locate Name Plate at Southeast Corner of Bridge (See Std. CN)



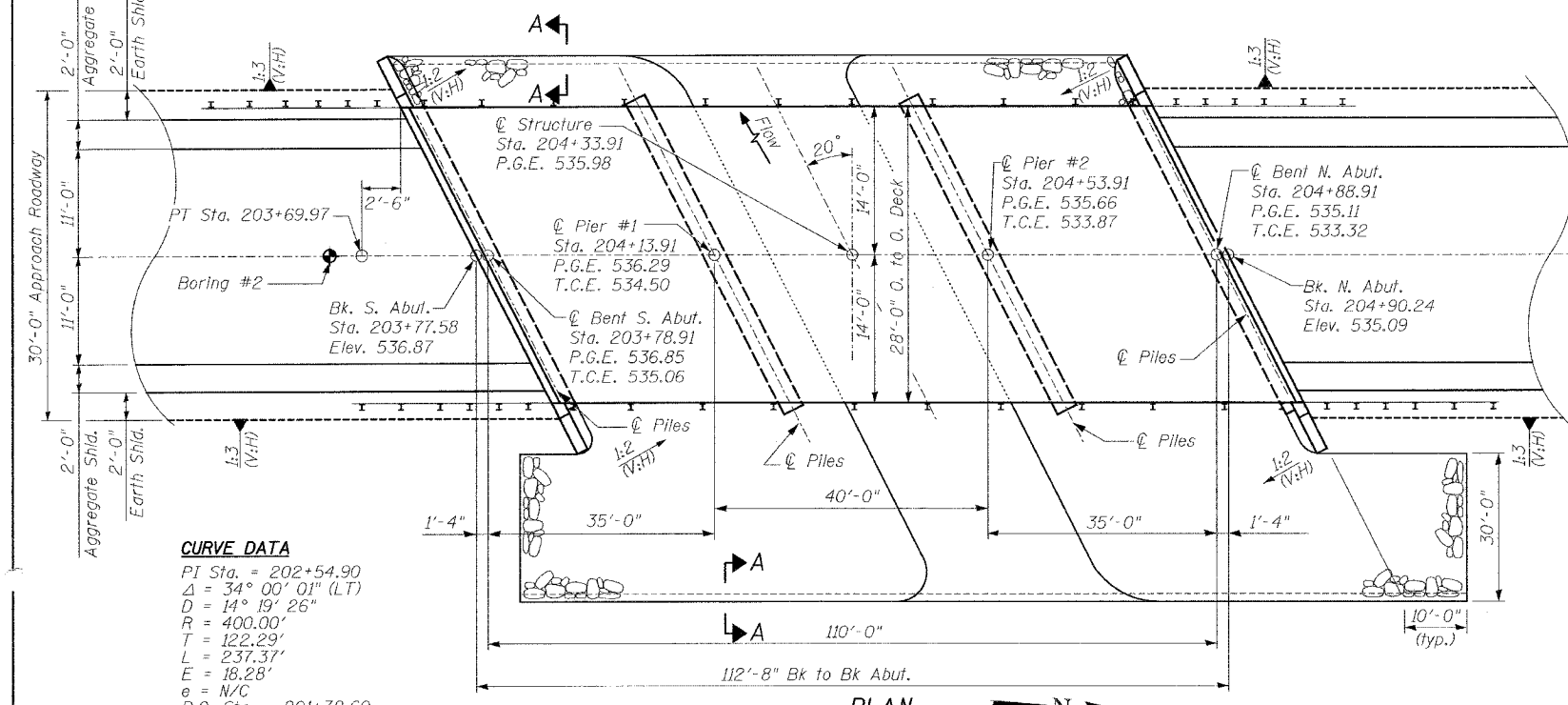
WATERWAY INFORMATION

(Without Little Wabash River Backwater Effects)

Drainage Area = 41.80 Sq. Miles Existing Low Grade Elev. - 529.70 ft. @ Sta. 147+82 (Existing 1200th Street)
Proposed Low Grade Elev. - 531.00 ft. @ Sta. 208+50 (Realigned 1200th Street)

Flood	Freq. Yr.	Discharge C.F.S.	Opening Sq. Ft.		Ex. Nat. H.W.E.	Pr. Nat. H.W.E.	Head - Ft.		Headwater El.	
			Exist.	Prop.			Exist.	Prop.	Exist.	Prop.
Design	50	5636	625	845	528.7	529.7	0.1	0.7	528.8	530.4
Base	100	6428	688	904	529.6	530.4	0.2	0.7	529.8	531.1
Ex. Overtop	5+	3000	431	-	525.9	-	0.3	-	526.2	-
Pr. Overtop	5+	3050	-	624	-	527.0	0.0	-	527.0	-

10 Year Velocity through Existing Bridge = 7.62fps
10 Year Velocity through Proposed Bridge = 5.33fps



TOTAL BILL OF MATERIAL

Item	Unit	Super	Sub.		Total
			Piers	Abuts.	
Removal of Existing Structures	Each	--	--	--	1
Concrete Structures	Cu. Yd.	--	15.4	22.0	37.4
Precast Prestressed Concrete Deck Beams (21" Depth)	Sq. Ft.	3101.0	--	--	3101.0
Steel Railing, Type S1	Foot	222	--	--	222
Reinforcement Bars, Epoxy Coated	Pound	--	1784	2762	4546
Furnishing Steel Piles HP12x53	Foot	--	374	306	680
Driving Steel Piles	Foot	--	374	306	680
Test Pile Steel HP12x53	Each	--	1	1	2
Name Plates	Each	--	--	--	1
Concrete Encasement	Cu. Yd.	--	27.9	3.5	31.4
Stone Riprap, Class A4	Sq. Yd.	--	--	--	1088
Filter Fabric	Sq. Yd.	--	--	--	1088
Structure Excavation	Cu. Yd.	--	--	63	63
Porous Granular Embankment, (Special)	Cu. Yd.	--	--	39	39
Geocomposite Wall Drain	Sq. Yd.	--	--	31	31
Pipe Underdrains for Structures 4"	Foot	--	--	78	78
Underwater Structure Excavation Protection Location 1	Each	--	1	--	1
Underwater Structure Excavation Protection Location 2	Each	--	1	--	1

CURVE DATA
PT Sta. = 202+54.90
Δ = 34° 00' 01" (LT)
D = 14° 19' 26"
R = 400.00'
T = 122.29'
L = 237.37'
E = 18.28'
e = N/C
P.C. Sta. = 201+32.60
P.T. Sta. = 203+69.97

SEISMIC DATA

Seismic Performance Category (SPC) = A
Bedrock Acceleration Coefficient (A) = 0.070g
Site Coefficient (S) = 1.5

LOADING HS20-44

Allow 50#/sq. ft. for future wearing surface.

DESIGN SPECIFICATIONS

2002 AASHTO

DESIGN STRESSES

FIELD UNITS
f_c = 3,500 psi
f_y = 60,000 psi (reinforcement)

PRECAST PRESTRESSED UNITS

f_c = 5,000 psi
f_{ci} = 4,000 psi
f_s = 270 ksi (1/2" Dia. stress relieved strands)
f_{si} = 189 ksi (1/2" Dia. stress relieved strands)

DESIGNED	TMM
CHECKED	KCM
DRAWN	CAR
CHECKED	TMM

APPROVED
FOR STRUCTURAL ADEQUACY ONLY
Toni M. McDonough
Licensed Structural Engineer
State of Illinois No. 81-5025
License Expires 11/30/06
Date 4-26-06

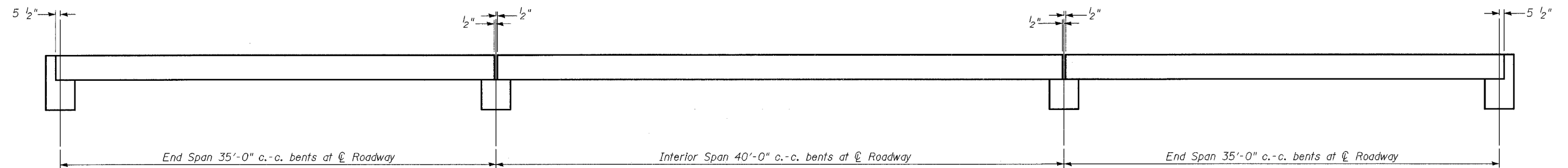
APPROVED
ENGINEER OF BRIDGES AND STRUCTURES
Relax E. Anderson (TSO)

GENERAL PLAN & ELEVATION
1200th STREET OVER GREEN CREEK
FAP RTE. 774, SECTION 107B-2
EFFINGHAM COUNTY
STATION 204+33.91
S.N. 025-3309

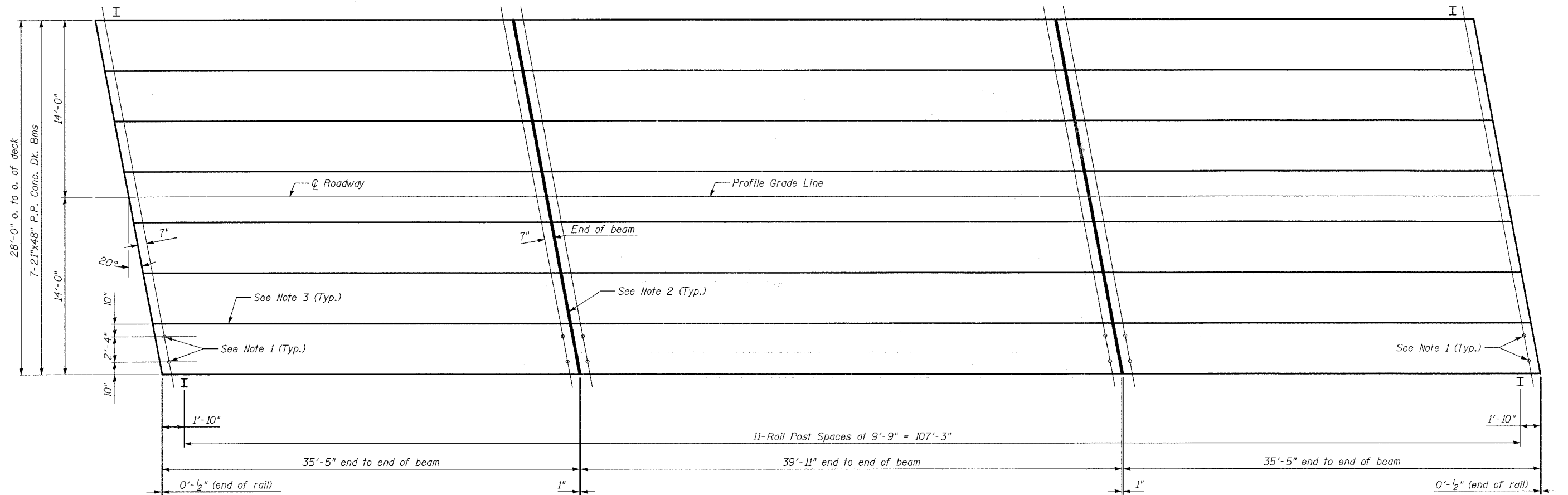
STATE OF ILLINOIS
DEPARTMENT OF TRANSPORTATION

ROUTE NO.	SECTION	COUNTY	SHEET	SHEET	SHEET NO. 2 8 SHEETS
FAP 774	107B-2	EFFINGHAM	27	21	
FED. ROAD DIST. NO. 7	ILLINOIS	FED. AID PROJECT-			

CONTRACT NO. 74131



TYPICAL ELEVATION



PLAN N

NOTES

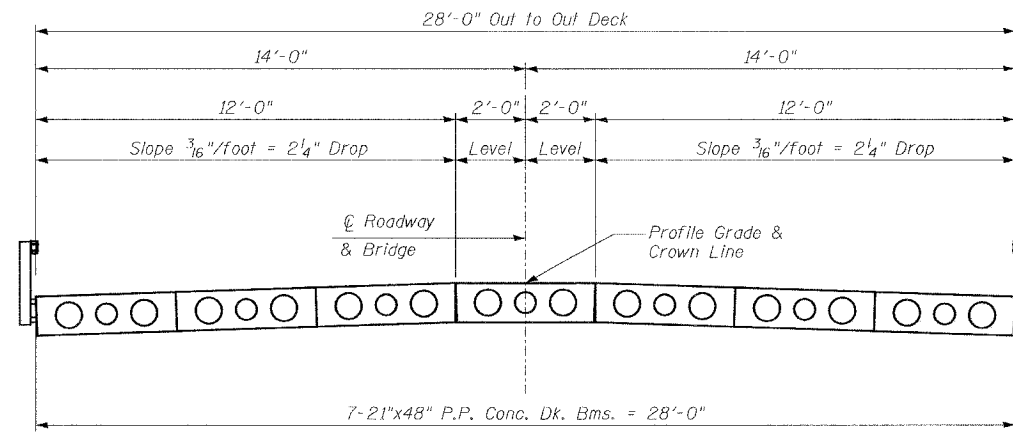
1. After beams have been erected, holes shall be drilled into substructure and anchor dowels placed. Dowel holes shall be filled with non-shrink grout to top of beam and allowed to cure min. 24 hrs. prior to grouting to shear keys.
2. Nominal 1" joint at \odot pier to be filled with P.C. mortar mixture. Non-shrink grout may be used at contractor's option.
3. Longitudinal keys shall be grouted.

DESIGNED	TMM
CHECKED	KCM
DRAWN	CAR
CHECKED	TMM

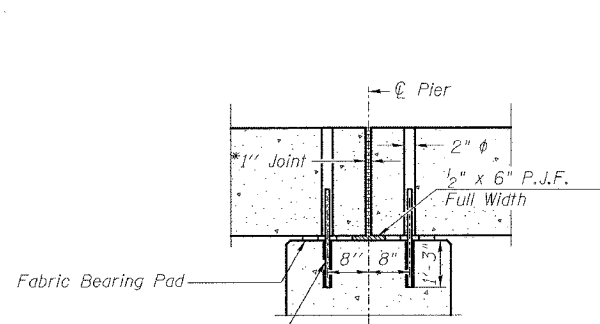
P.P.C. DECK BEAM SUPERSTRUCTURE
1200th STREET OVER GREEN CREEK
FAP RTE. 774, SECTION 107B-2
EFFINGHAM COUNTY
STATION 204+33.91
S.N. 025-3309

STATE OF ILLINOIS
DEPARTMENT OF TRANSPORTATION

ROUTE NO.	SECTION	COUNTY	SHEET	NO.	SHEET NO. 3
FAP 774	107B-2	EFFINGHAM	27	22	8 SHEETS
FED. ROAD DIST. NO. 7	ILLINOIS	FED. AID PROJECT-	CONTRACT NO. 74131		

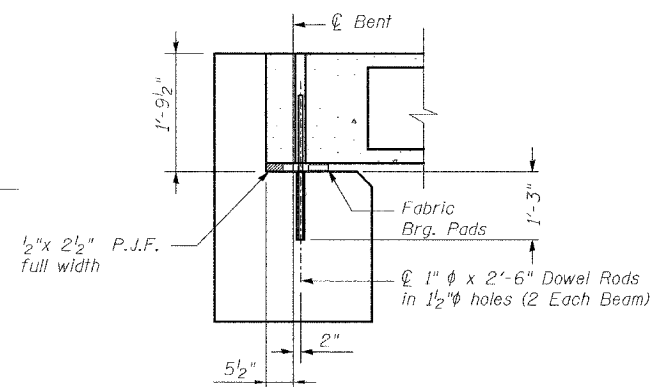


CROSS SECTION

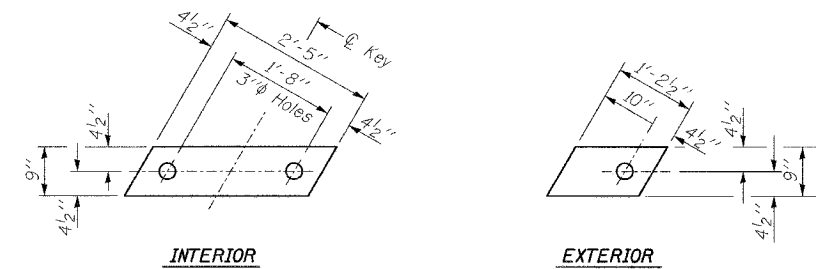
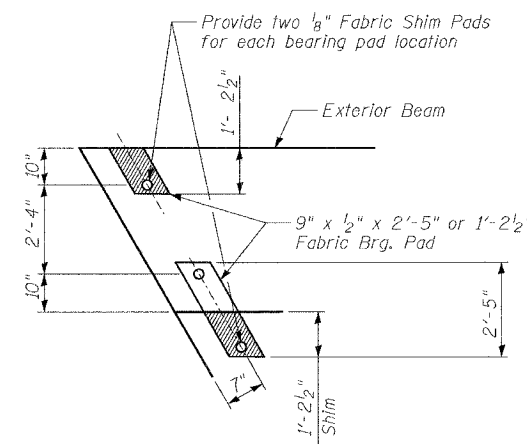


SECTION THRU PIER
(Along \varnothing beams)

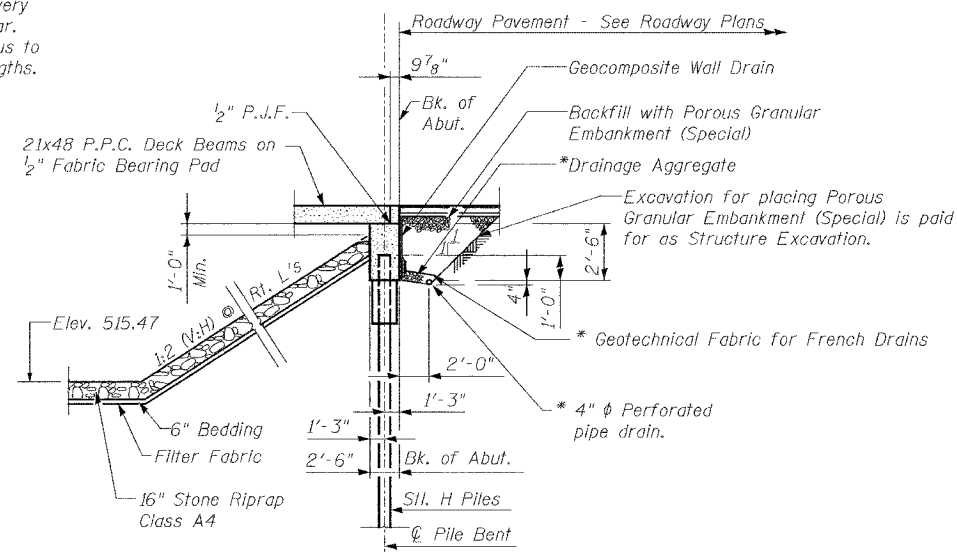
* 1" Joint shall be packed with a very dry mix of 2:1 sand and P.C. mortar. 1" Dimension may vary plus or minus to accommodate tolerance in beam lengths.



SECTION AT ABUTMENTS
(ALONG \varnothing BEAMS)



1/2" FABRIC BEARING PAD DETAILS



SECTION THRU ABUTMENT
(AT RT. L'S)

* Included in the cost of Pipe Underdrains for Structures.

Note:
All drainage system components shall extend parallel to the abutment back wall until they intersect the wingwalls or 2'-0" from the end of the wingwalls when the wings are parallel to the abutment. The pipe shall extend under the wingwall, if necessary, until intersecting the side slopes. The pipes shall drain into concrete headwalls. (See Article 601.05 of the Standard Specifications and Highway Standard 601.10).

NOTES

- Nominal 1" joint at \varnothing Pier may be filled with non-shrink grout in lieu of P.C. mortar mixture at contractor's option.
- Longitudinal keys shall be grouted.
- The bearing seat surfaces shall be adjusted by shimming to assure firm and even bearing. Two 1/8" fabric adjusting shims of the dimensions of the Exterior Bearing Pad shall be provided for each bearing.

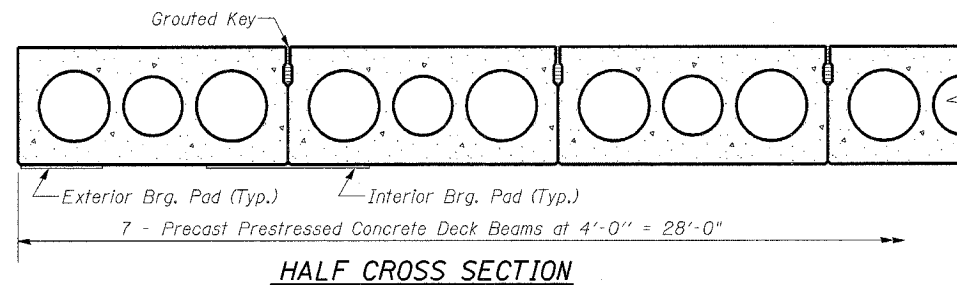
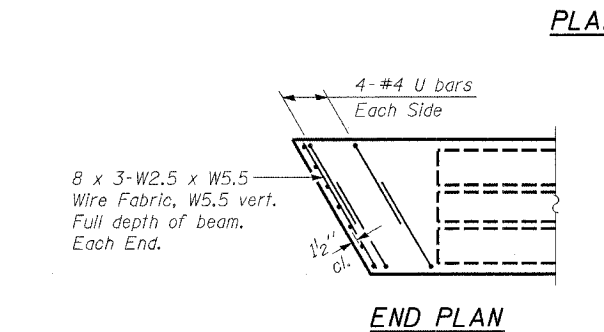
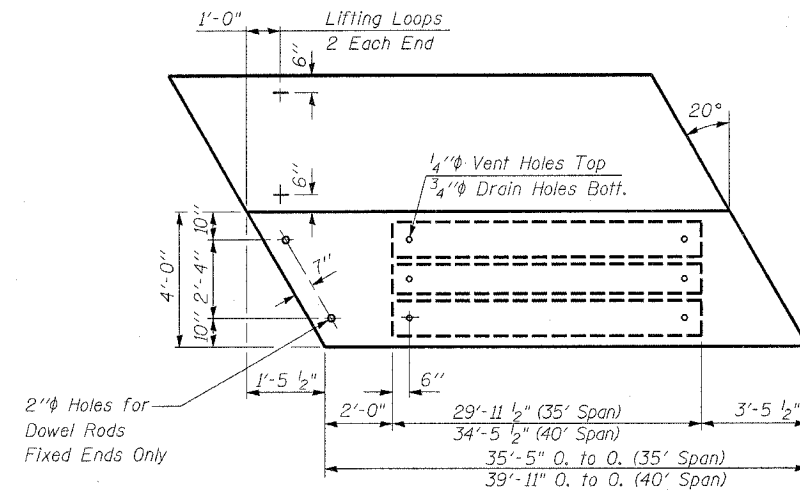
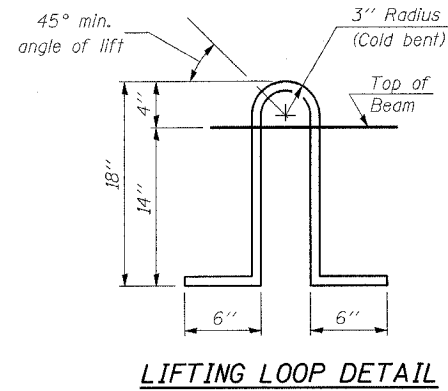
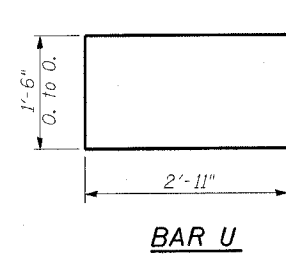
P.P.C. DECK BEAM SUPERSTRUCTURE
DETAILS
1200th STREET OVER GREEN CREEK
FAP RTE. 774, SECTION 107B-2
EFFINGHAM COUNTY
STATION 204+33.91
S.N. 025-3309

DESIGNED	TMM
CHECKED	KCM
DRAWN	CAR
CHECKED	TMM

STATE OF ILLINOIS
DEPARTMENT OF TRANSPORTATION

ROUTE NO.	SECTION	COUNTY	SHEET NO.	SHEET	SHEET NO. 4
FAP 774	107B-2	EFFINGHAM	27	23	8 SHEETS
FED. ROAD DIST. NO. 7		ILLINOIS	FED. AID PROJECT-		

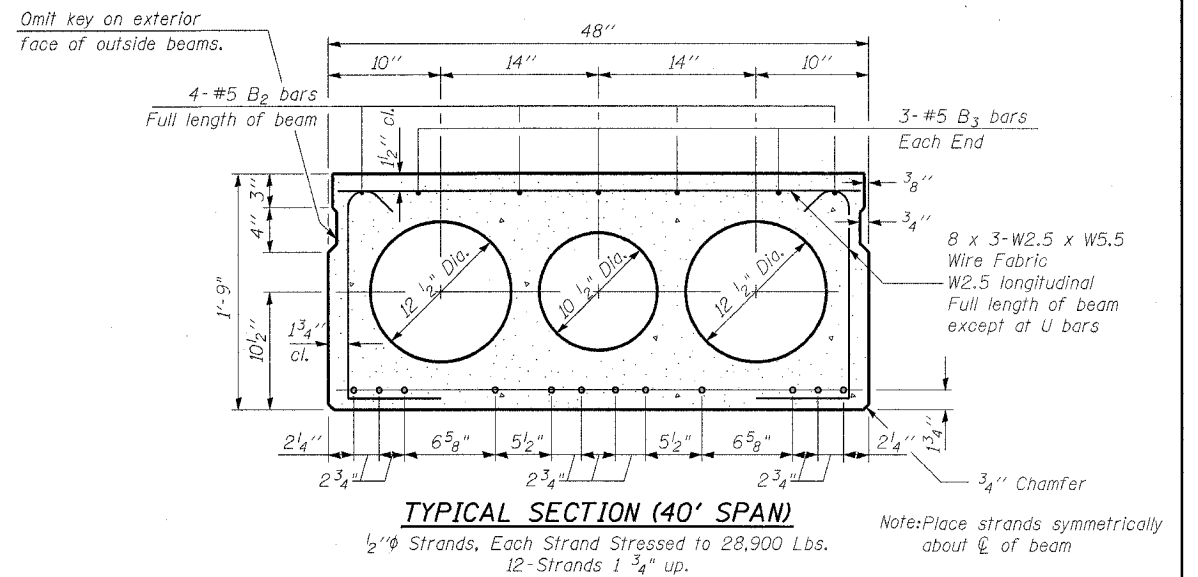
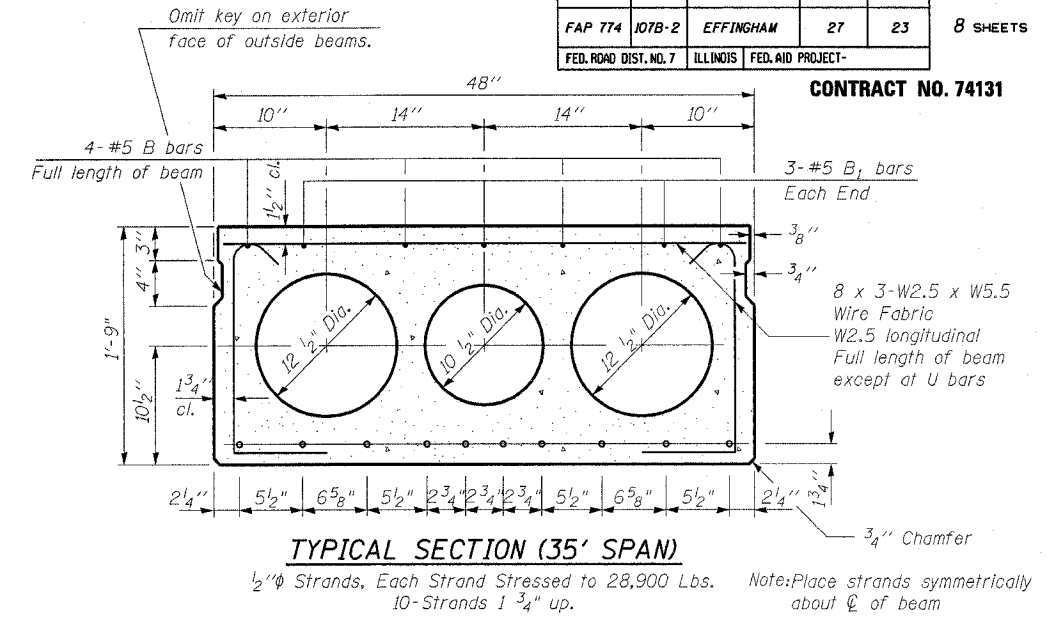
CONTRACT NO. 74131



NOTES

- Prestressing steel shall be uncoated high strength, stress-relieved 7-wire strand, Grade 270. The nominal diameter shall be $\frac{1}{2}$ " and the nominal cross-sectional area shall be 0.153 sq. in.
- Lifting loops shall be 2 - $\frac{1}{2}$ " ϕ - 270 ksi strands, as shown. Alternate approved lifting devices are also acceptable.
- Reinforcement bars shall conform to the requirements of AASHTO M 31 or M 322 Grade 60.
- Keyway surfaces shall be cleaned to remove form oil or other bond breaking material prior to shipment of the beams. Cleaning shall be done by sandblasting the keyway areas between top of the beam and the bottom edge of the key.
- A Corrosion Inhibitor, as covered in the Special Provisions, shall be used in the concrete for precast prestressed concrete deck beams.
- Required Release Strength, f'_{ci} , shall be 4,000 p.s.i.
- An equal substitution of the low-relaxation strands for the stress-relieved strands will be permitted.

DESIGNED	TMM
CHECKED	KCM
DRAWN	CAR
CHECKED	TMM



**BILL OF MATERIAL
TOTAL FOR 21 DECK BEAMS**

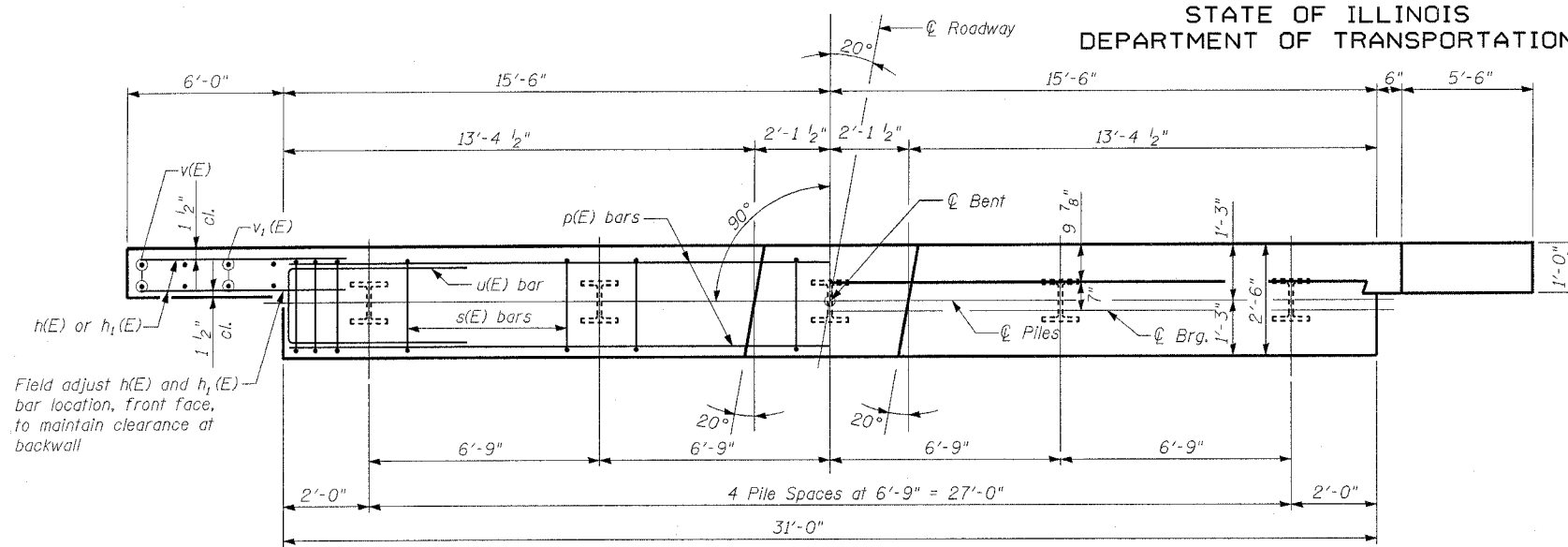
Bar	No.	Size	Length	Shape
B	56	5	35'-1"	—
B ₁	84	5	7'-1"	—
B ₂	28	5	39'-7"	—
B ₃	42	5	8'-0"	—
U	336	4	7'-4"	—
Precast Prestressed Conc. Deck Bms.			Sq. Ft.	3101

21"X48" P.P.C.
DECK BEAM DETAILS
1200th STREET OVER GREEN CREEK
FAP RTE. 774, SECTION 107B-2
EFFINGHAM COUNTY
STATION 204+33.91
S.N. 025-3309

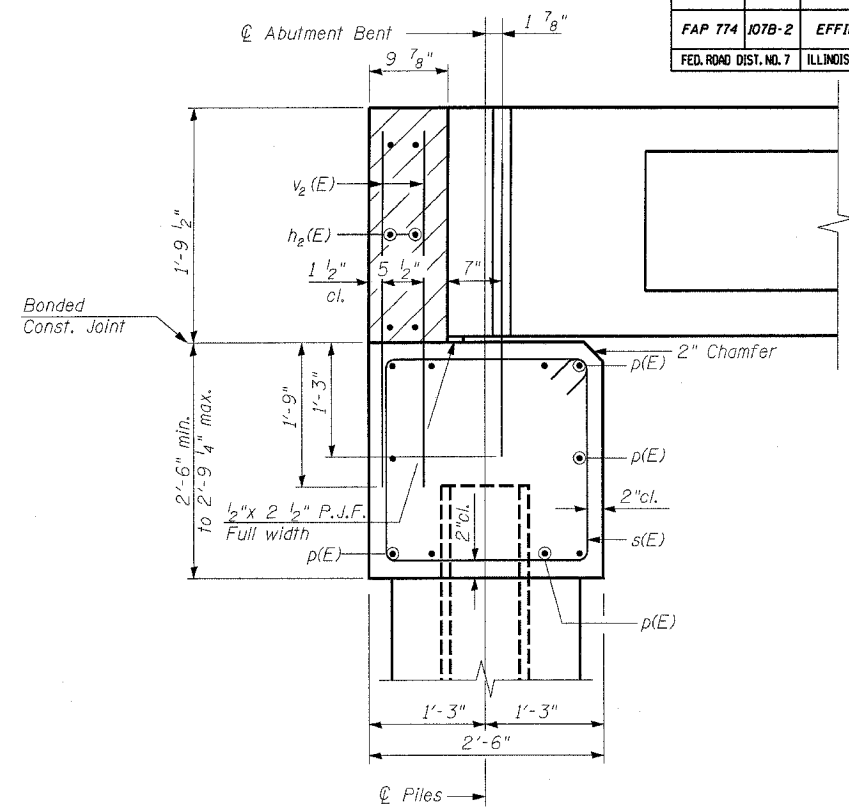
STATE OF ILLINOIS
DEPARTMENT OF TRANSPORTATION

ROUTE NO.	SECTION	COUNTY	DATE	SHEET	SHEET NO. 5
FAP 774	107B-2	EFFINGHAM	27	24	8 SHEETS
FED. ROAD DIST. NO. 7		ILLINOIS FED. AID PROJECT			

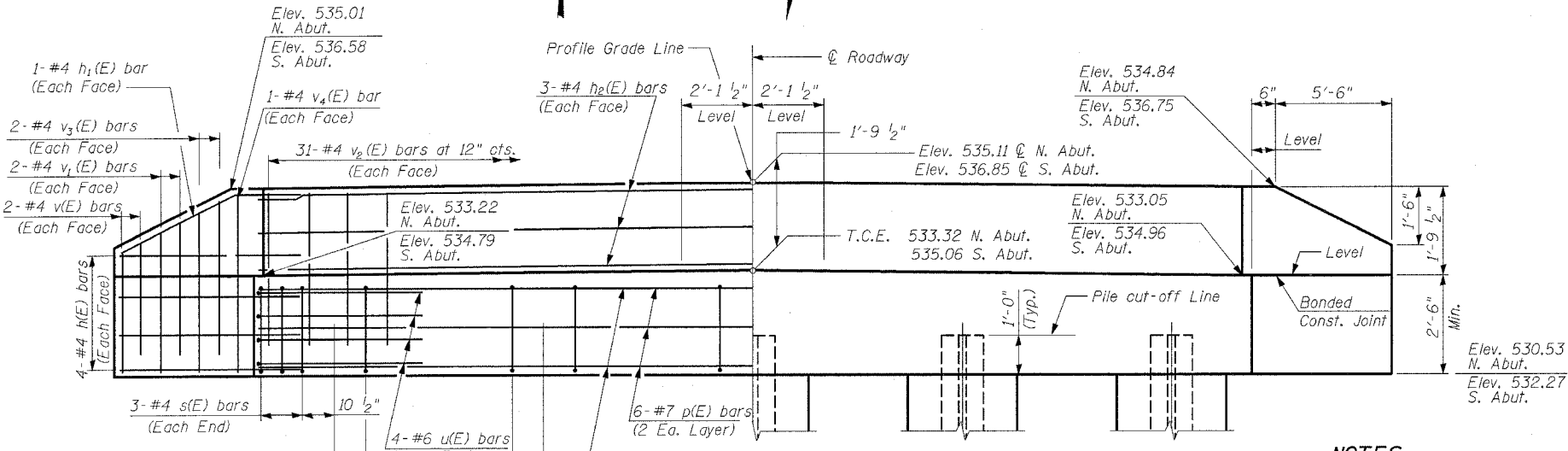
CONTRACT NO. 74131



PLAN
North Abutment
South Abutment



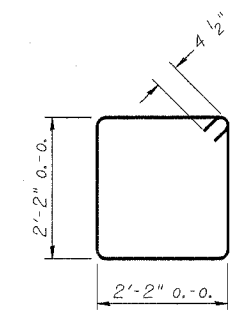
SECTION THRU ABUTMENT
(At Right Angles)



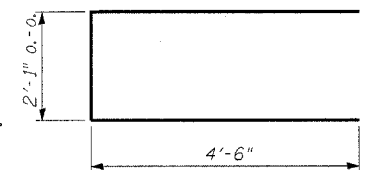
ELEVATION
(North Abutment Looking North)
(South Abutment Looking South)
T.C.E. = Top of Cap Elevation

NOTES

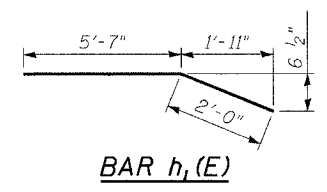
1. The Backwall and the portion of the Wingwalls above the bonded construction joint shall be cast against the in-place beam.
2. Reinforcement bars shall conform to AASHTO M 31 or M322 Grade 60.
3. Reinforcement bars designated (E) shall be epoxy coated.
4. Hatched area to be poured after beam is placed.



BAR s(E)



BAR u(E)



BAR h1(E)

BILL OF MATERIAL
FOR ONE ABUTMENT

Bar	No.	Size	Length	Shape
h(E)	16	#4	8'-0"	—
h1(E)	4	#4	7'-7"	—
h2(E)	6	#4	30'-8"	—
p(E)	10	#7	30'-8"	—
s(E)	30	#4	9'-5"	□
u(E)	8	#6	11'-1"	—
v(E)	8	#4	2'-7"	—
v1(E)	8	#4	3'-0"	—
v2(E)	62	#4	3'-5"	—
v3(E)	8	#4	3'-6"	—
v4(E)	4	#4	4'-0"	—
Concrete Structures			Cu. Yd.	11.0
Reinforcement Bars, Epoxy Coated			Pound	1381
Furnishing Steel Piles HP12x53			Foot	153
Driving Steel Piles			Foot	153
*Test Pile Steel HP12x53			Each	1
Concrete Encasement			Cu. Yd.	1.75
Structure Excavation			Cu. Yd.	35.5
Porous Granular Embankment			Cu. Yd.	26.5

*At North Abutment only

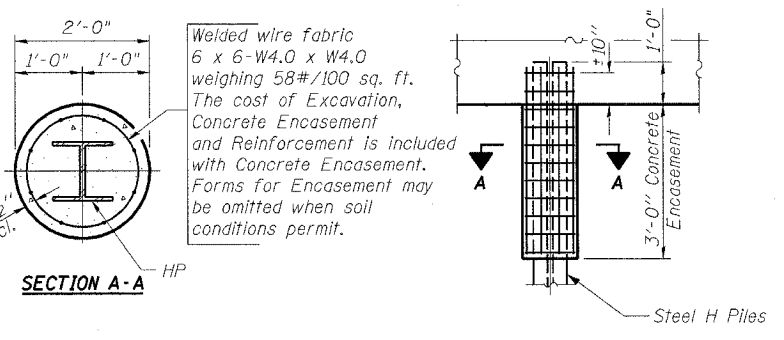
PILE DATA (2-ABUTMENTS)

Type HP12x53
Capacity Driven to Refusal*
Estimated Length 34 Feet
Number Required 9
Test Pile 1 In North Abutment
*Allows for 7 Tons of negative skin friction

DESIGN STRESSES

f_c = 3,500 psi
f_y = 60,000 psi

DESIGNED	TMM
CHECKED	KCM
DRAWN	CAR
CHECKED	TMM



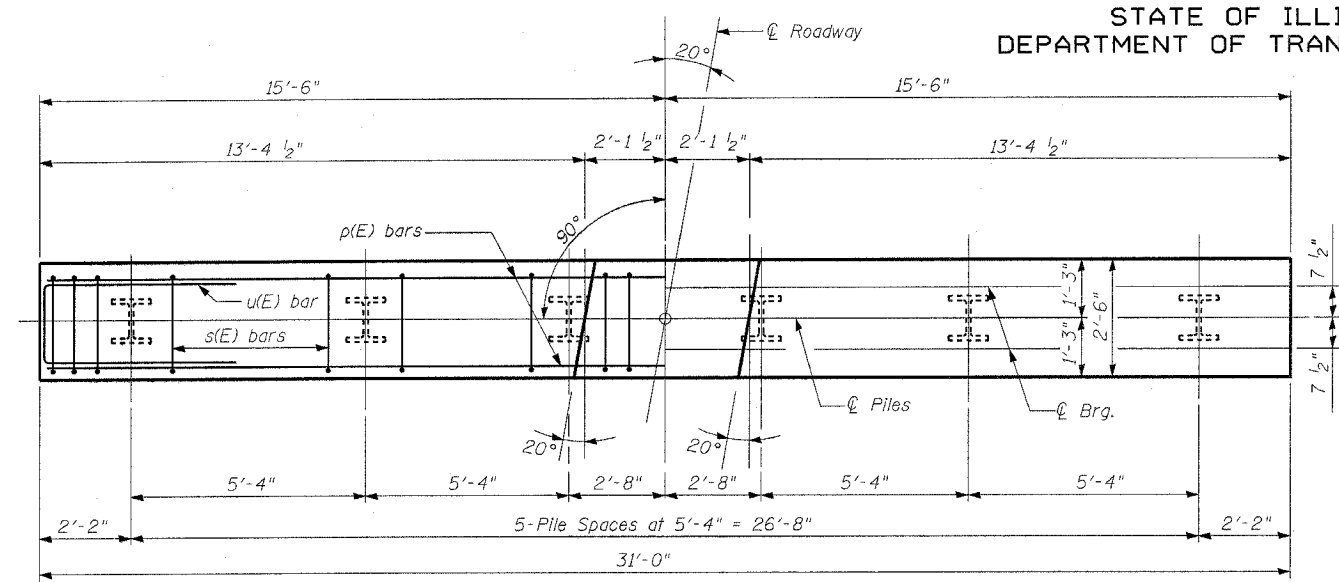
SECTION A-A
PILE ENCASEMENT DETAIL AT ABUTMENT

PILE BENT ABUTMENT
1200th STREET OVER GREEN CREEK
FAP RTE. 774, SECTION 107B-2
EFFINGHAM COUNTY
STATION 204+33.91
S.N. 025-3309

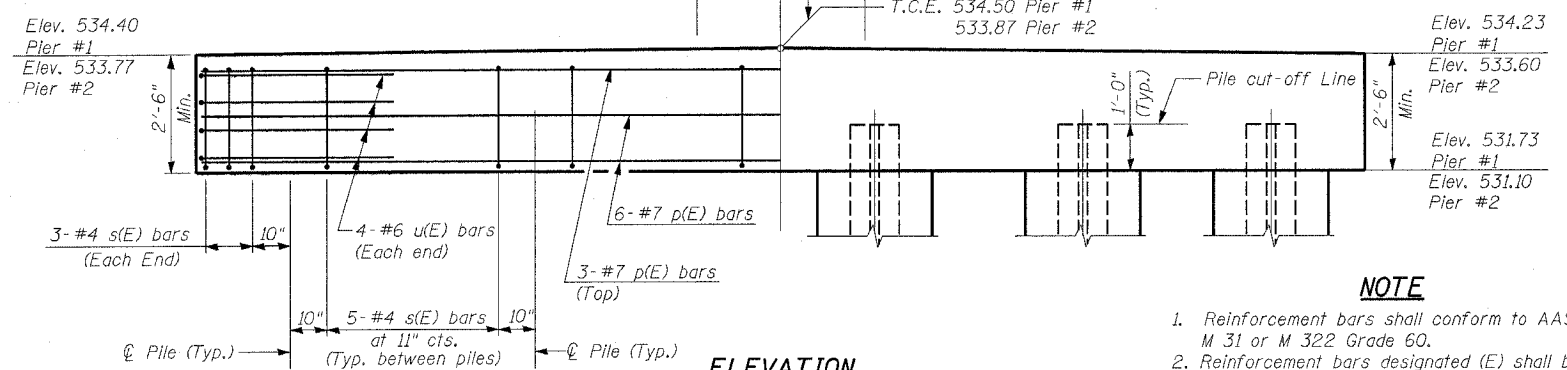
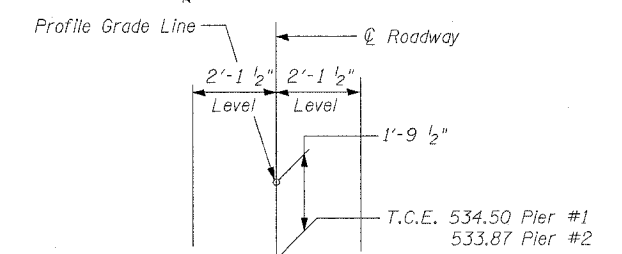
STATE OF ILLINOIS
DEPARTMENT OF TRANSPORTATION

ROUTE NO.	SECTION	COUNTY	SHEETS	POST	SHEET NO. 6
FAP 774	107B-2	EFFINGHAM	27	25	8 SHEETS
FED. ROAD DIST. NO. 7	ILLINOIS FED. AID PROJECT-				

CONTRACT NO. 74131



PLAN

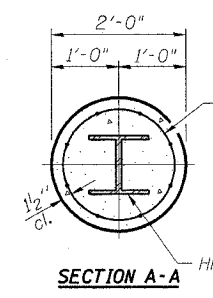


ELEVATION

(Pier #1 Looking North)
(Pier #2 Looking North)
T.C.E. = Top of Cap Elevation

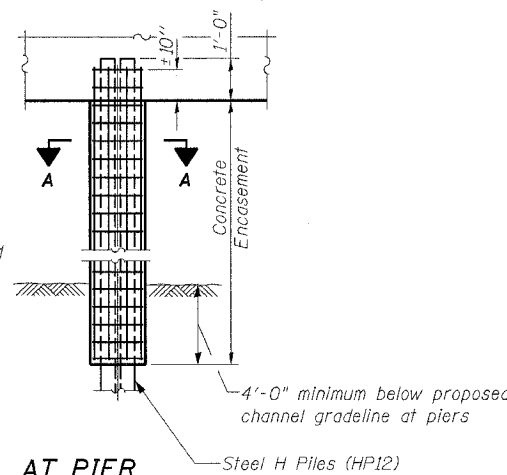
NOTE

1. Reinforcement bars shall conform to AASHTO M 31 or M 322 Grade 60.
2. Reinforcement bars designated (E) shall be epoxy coated.

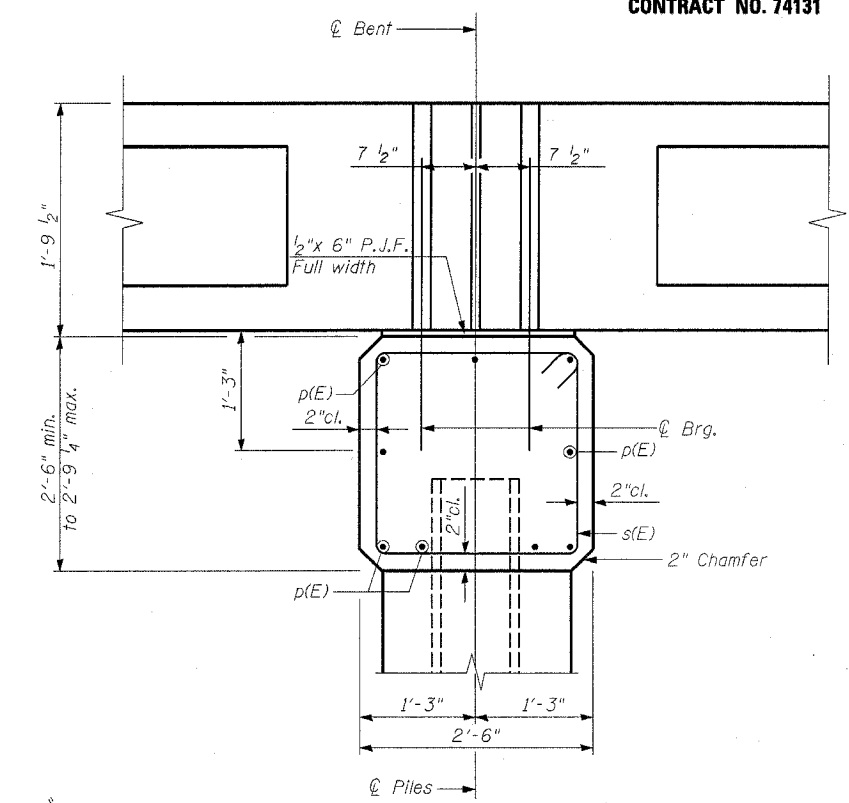


SECTION A-A

Welded wire fabric
6 x 6-W4.0 x W4.0
weighing 58#/100 sq. ft.
The cost of Excavation,
Concrete Encasement
and Reinforcement is included
with Concrete Encasement
Forms for Encasement may
be omitted when soil
conditions permit.

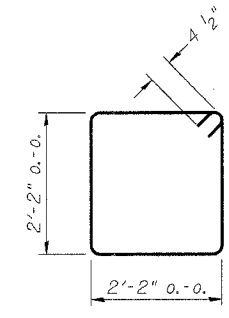


PILE ENCASEMENT DETAIL AT PIER

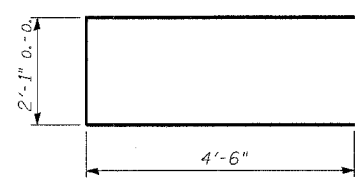


SECTION THRU PIER

(At Right Angles)



BAR s(E)



BAR u(E)

BILL OF MATERIAL
FOR ONE PIER

Bar	No.	Size	Length	Shape
p(E)	9	#7	30'-8"	—
s(E)	31	#4	9'-5"	□
u(E)	8	#6	11'-1"	—
Concrete Structures			Cu. Yd.	7.7
Reinforcement Bars, Epoxy Coated			Pound	892
Furnishing Steel Piles HP12x53			Foot	187
Driving Steel Piles			Foot	187
*Test Pile Steel HP12x53			Each	1
Concrete Encasement			Cu. Yd.	13.95
Underwater Structure Excavation Protection Location 1			Each	1
Underwater Structure Excavation Protection Location 2			Each	1

*At Pier #1 only

PILE DATA (2-PIERS)

Type	HP12x53
Capacity	Driven to Refusal
Estimated Length	34 Feet
Number Required	11
Test Pile	1 In Pier #1

PILE BENT PIER
1200th STREET OVER GREEN CREEK
FAP RTE. 774, SECTION 107B-2
EFFINGHAM COUNTY
STATION 204+33.91
S.N. 025-3309

DESIGNED	TMM
CHECKED	KCM
DRAWN	CAR
CHECKED	TMM

STATE OF ILLINOIS
DEPARTMENT OF TRANSPORTATION

ROUTE NO.	SECTION	COUNTY	JOB NO.	SHEET NO.
FAP 744	107B-2	EFFINGHAM	27	27
FED. ROAD DIST. NO. 7 ILLINOIS FED. AID PROJECT-				
CONTRACT NO. 74131				

Illinois Department of Transportation
Division of Highways
State Department of Transportation - District 7

SOIL BORING LOG

Page 1 of 2
Date 10/17/02

ROUTE CR 1200 E DESCRIPTION Green Creek LOGGED BY E. Sandtschafer

SECTION 107 WRS-1 LOCATION NW 1/4 SEC. 18, TWP. 8 N. RNG. 6 E. 3 PM

COUNTY Effingham DRILLING METHOD Hollow stem auger & split spoon HAMMER TYPE Automatic 140#

STRUCT. NO. 025-3181
Station Unknown

BORING NO. 1 of 2 (North Abut.)
Station 204+70
Offset 0.00#
Ground Surface Elev. 528.31 ft

DEPTH (ft)	DESCRIPTION	WATER	TEMP.	GRAIN	PERCENTAGE	TEST	REMARKS
0	Surface Water Elev. Dry ft						
0	Stream Bed Elev. 516.38 ft						
0	Groundwater Elev. 519.6 ft						
0	First Encounter Upon Completion Washed ft						
0	After N/A. Hrs. samples ft						
0	Very stiff, very moist, brown, SILTY LOAM w/ hair roots.			3%	passing #200 sieve.		
16	Loose, water bearing, gray SAND w/ one 1" stone. 7% passing #200 sieve.						
22.31	Brown, SANDY LOAM w/ hair roots.						
28.31	Very stiff, very moist, brown, SILTY LOAM w/ hair roots.						
34.31	Very soft, very damp, brown, SILTY LOAM.						
40.31	Very soft, damp, brown, SANDY LOAM.						
46.31	Loose, very damp, brown w/ rust spots, SAND.						
52.31	5% passing #200 sieve.						
58.31	Very loose, wet to water bearing, gray SAND. 5% passing #200 sieve.						
64.31	5% passing #200 sieve.						

The Unconfined Compressive Strength (UCS) Failure Mode is indicated by (B-Bulge, S-Shear, P-Penetrometer)
The SPT (N value) is the sum of the last two blow values in each sampling zone (AASHTO T206) BBS, form 137 (Rev. 8-99)

Illinois Department of Transportation
Division of Highways
State Department of Transportation - District 7

ROCK CORE LOG

Page 2 of 2
Date 10/17/02

ROUTE CR 1200 E DESCRIPTION Green Creek LOGGED BY E. Sandtschafer

SECTION 107 WRS-1 LOCATION NW 1/4 SEC. 18, TWP. 8 N. RNG. 6 E. 3 PM

COUNTY Effingham CORING METHOD Rotary diamond surf set bit

STRUCT. NO. 025-3181
Station Unknown

BORING NO. 1 of 2 (North Abut.)
Station 204+70
Offset 0.00#
Ground Surface Elev. 528.31 ft

CORING BARREL TYPE & SIZE NW, conv dbl bbl split inner
Core Diameter 2.06 in
Top of Rock Elev. 500.81 ft
Begin Core Elev. 500.81 ft

DEPTH (ft)	DESCRIPTION	RECOVERY (%)	REMARKS
500.81	Gray, SANDY CLAY LOAM SHALE w/ thin gray sandstone layering	100	
501.1			
501.4			
501.7			
502.0			
502.3			
502.6			
502.9			
503.2			
503.5			
503.8			
504.1			
504.4			
504.7			
505.0			
505.3			
505.6			
505.9			
506.2			
506.5			
506.8			
507.1			
507.4			
507.7			
508.0			
508.3			
508.6			
508.9			
509.2			
509.5			
509.8			
510.1			
510.4			
510.7			
511.0			
511.3			
511.6			
511.9			
512.2			
512.5			
512.8			
513.1			
513.4			
513.7			
514.0			
514.3			
514.6			
514.9			
515.2			
515.5			
515.8			
516.1			
516.4			
516.7			
517.0			
517.3			
517.6			
517.9			
518.2			
518.5			
518.8			
519.1			
519.4			
519.7			
520.0			

Color pictures of the cores _____
Cores will be stored for examination until _____
The "Strength" column represents the uniaxial compressive strength of the core sample (ASTM D-2938) BBS, form 139 (Rev. 6-99)

Illinois Department of Transportation
Division of Highways
State Department of Transportation - District 7

SOIL BORING LOG

Page 1 of 1
Date 10/17/02

ROUTE CR 1200 E DESCRIPTION Green Creek LOGGED BY E. Sandtschafer

SECTION 107 WRS-1 LOCATION NW 1/4 SEC. 18, TWP. 8 N. RNG. 6 E. 3 PM

COUNTY Effingham DRILLING METHOD Hollow stem auger & split spoon HAMMER TYPE Automatic 140#

STRUCT. NO. 025-3181
Station Unknown

BORING NO. 2 of 2 (South Abut.)
Station 204+58
Offset 0.00#
Ground Surface Elev. 529.34 ft

DEPTH (ft)	DESCRIPTION	WATER	TEMP.	GRAIN	PERCENTAGE	TEST	REMARKS
0	Surface Water Elev. Dry ft						
0	Stream Bed Elev. 526.35 ft						
0	Groundwater Elev. 517.3 ft						
0	First Encounter Upon Completion Washed ft						
0	After N/A. Hrs. samples ft						
0	Very loose, water bearing, gray SAND w/ few sandstone fragments and one wood chunk. 1% passing #200 sieve.						
3	Medium, water bearing, gray SAND w/ many pebbles. 3% passing #200 sieve.						
4	Medium, damp, brown, SANDY LOAM w/ few hair roots.						
10	Loose, water bearing, gray SAND w/ many pebbles. 7% passing #200 sieve.						
15	Loose, damp, brown, SAND 27% passing #200 sieve.						
22	SLT damp, gray, SANDY CLAY LOAM.						
1.8	Gray, SANDY CLAY LOAM SHALE.						
501.1	Extent of exploration.						
504.54	Benchmark: BM #10 = 543.54' on Little Wabash River bridge. Furnished by Program Development						
517.34	Very loose, water bearing, brown, SAND w/ few gray sandstone fragments. 10% passing #200 sieve.						
518.34	Loose, water bearing, brown, SAND. 2% passing #200 sieve.						
511.04							

The Unconfined Compressive Strength (UCS) Failure Mode is indicated by (B-Bulge, S-Shear, P-Penetrometer)
The SPT (N value) is the sum of the last two blow values in each sampling zone (AASHTO T206) BBS, form 137 (Rev. 8-99)

DESIGNED	TMM
CHECKED	KCM
DRAWN	CAR
CHECKED	TMM

BORING LOGS
1200th STREET OVER GREEN CREEK
FAP RTE. 774, SECTION 107B-2
EFFINGHAM COUNTY
STATION 204+33.91
S.N. 025-3309