

district
4/27/2006
c:\projects\74190\d\06306pa.dgn

CONTRACT NO. 74190

F.A.P. RTE.	SECTION	COUNTY	TOTAL SHEETS	SHEET NO.
827	*	WABASH	4	1

* D-7 DEMOLITION 2006-1

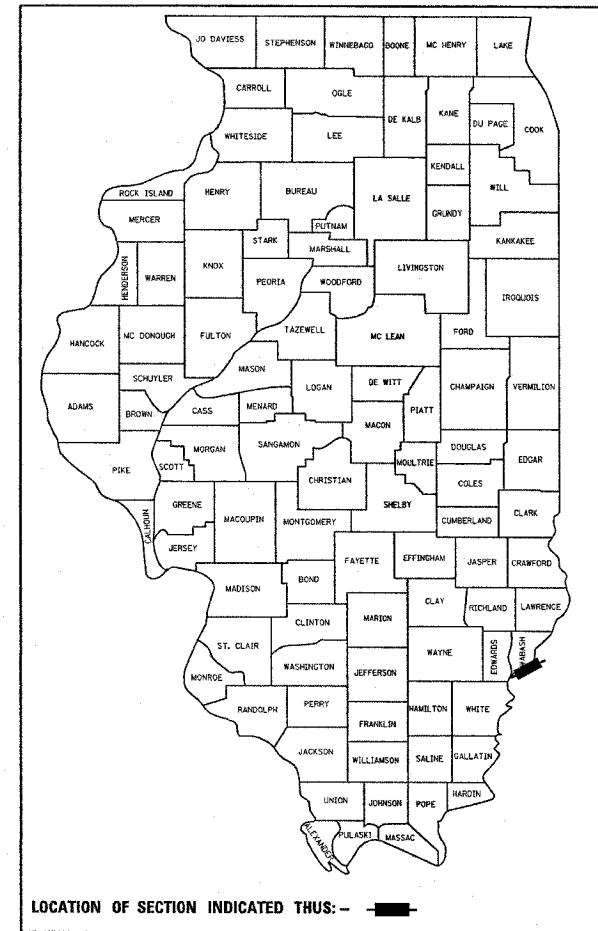
STATE OF ILLINOIS
DEPARTMENT OF TRANSPORTATION
DIVISION OF HIGHWAYS

**PROPOSED
HIGHWAY PLANS**

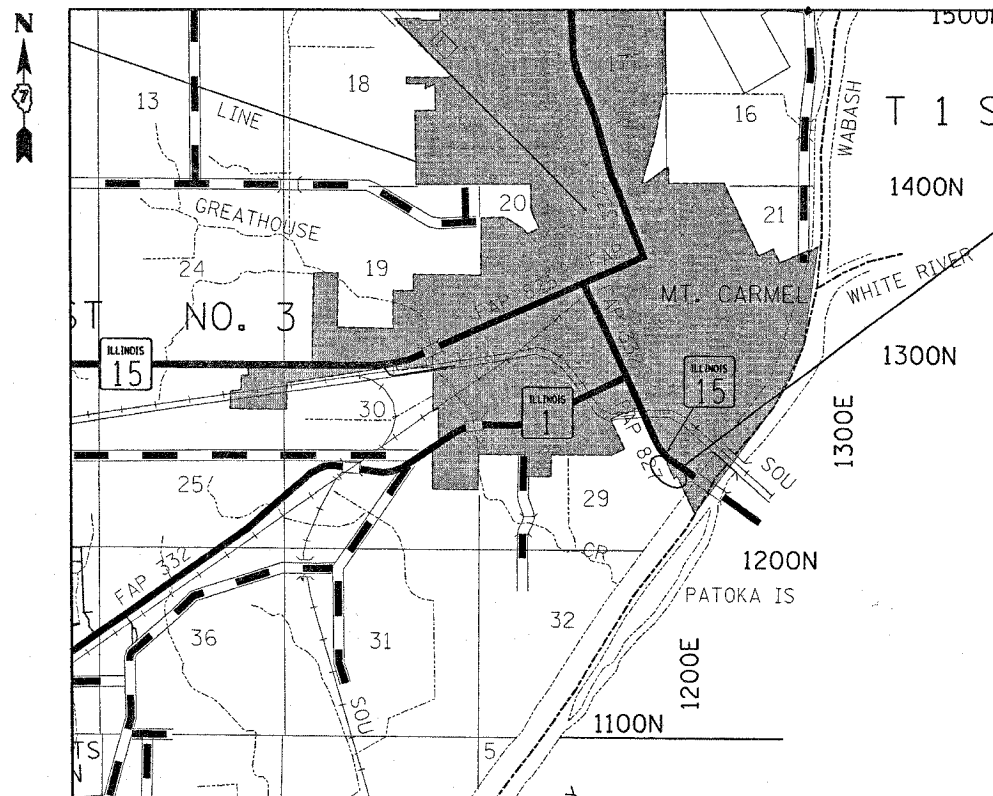
FAP ROUTE 827 (ILL 15)
SECTION D-7 DEMOLITION 2006-1
~~PROJECT~~
WABASH COUNTY
BUILDING DEMOLITION

FOR INDEX OF SHEETS, SEE SHEET NO. 2

D-97-063-06

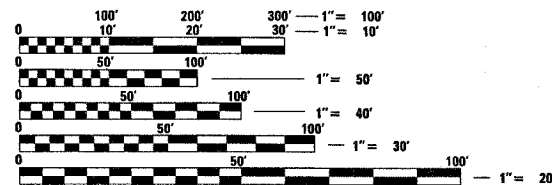


C-97-109-06



PROJECT LOCATION

ADT (2005) = 7,200



FULL SIZE PLANS HAVE BEEN PREPARED USING STANDARD ENGINEERING SCALES. REDUCED SIZED PLANS WILL NOT CONFORM TO STANDARD SCALES. IN MAKING MEASUREMENTS ON REDUCED PLANS, THE ABOVE SCALES MAY BE USED.

J.U.L.I.E.
JOINT UTILITY LOCATION INFORMATION FOR EXCAVATION
1-800-892-0123

PROJECT ENGINEER : MARK DAUGHERTY
SQUAD LEADER : KRISTI SANDSCHAFFER
DESIGNER : KRISTI SANDSCHAFFER
TELEPHONE : 217/342-3951 EX 313

CONTRACT NO. 74190

TOWNSHIP: MT. CARMEL

GROSS LENGTH = FEET = MILES
NET LENGTH = FEET = MILES

STATE OF ILLINOIS
DEPARTMENT OF TRANSPORTATION
DIVISION OF HIGHWAYS

SUBMITTED April 28, 2006
Christ H. Reed
DEPUTY DIRECTOR OF HIGHWAYS, REGION ENGINEER

May 12, 2006
Mike Hine
ENGINEER OF DESIGN AND ENVIRONMENT

May 12, 2006
Milton R. Sees, P.E.
DIRECTOR OF HIGHWAYS, CHIEF ENGINEER

**PRINTED BY THE AUTHORITY
OF THE STATE OF ILLINOIS**