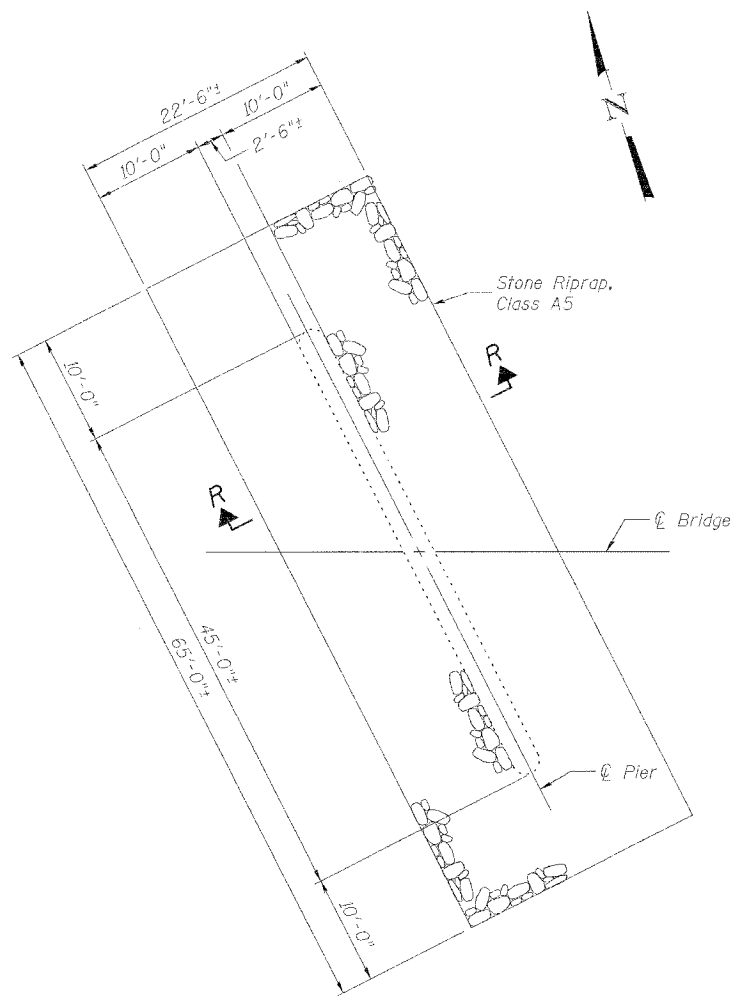


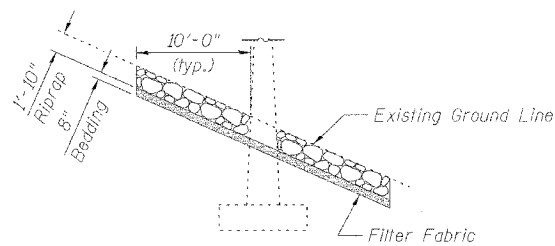
STATE OF ILLINOIS  
DEPARTMENT OF TRANSPORTATION

SHEET 3  
OF 3

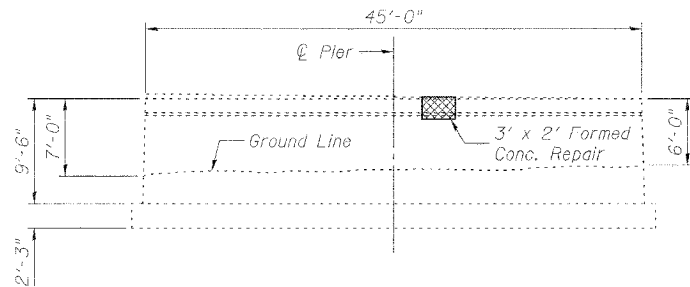
F.A.I. RTE.	SECTION	COUNTY	TOTAL SHEETS	SHEET NO.
64	82-8B	ST. CLAIR	39	31
FED. ROAD DIST. NO.	ILLINOIS FED. AID PROJECT		CONTRACT NO. 76037	



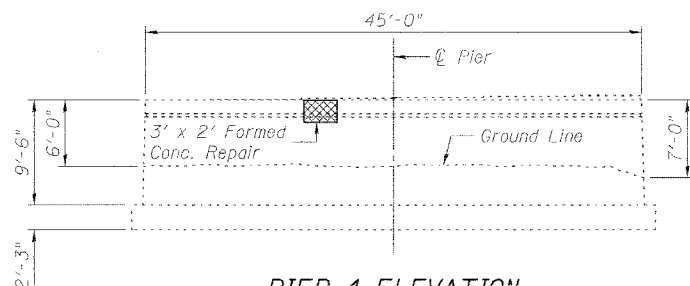
**PLAN - RIPRAP AT PIERS**  
(Typical at Each Pier)



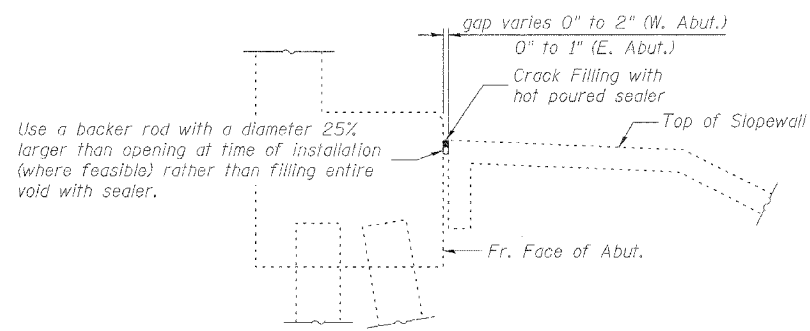
**SECTION R-R**  
(Piers 2 & 3 shown,  
Piers 1 & 4 similar)



**PIER 4 ELEVATION**  
(Facing East)

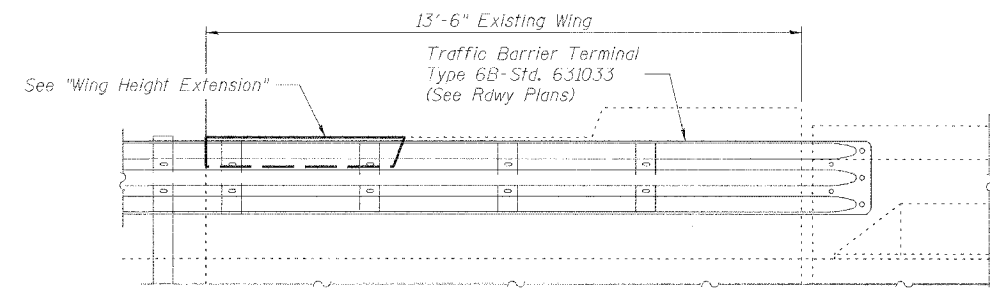


**PIER 4 ELEVATION**  
(Facing West)

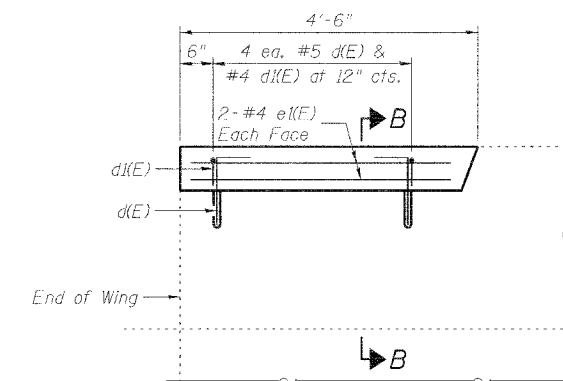


**SECTION AT ABUTMENT SLOPEWALL**  
(West & East Abutments)

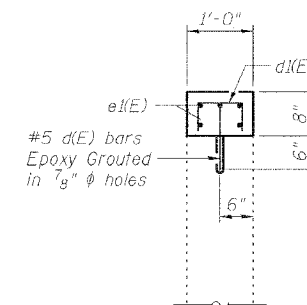
Use a backer rod with a diameter 25% larger than opening at time of installation (where feasible) rather than filling entire void with sealer.



**PROPOSED GUARDRAIL CONNECTION AT WEST ABUT.**  
(Replace existing guardrail connection)



**WING HEIGHT EXTENSION**  
(Both wings at West Abutment only)



**SECTION B-B**



**BILL OF MATERIAL**

Bar	No.	Size	Length	Shape
d(E)	8	#5	1'-6"	L
d(E)	8	#4	1'-6"	Π
e(E)	8	#4	3'-11"	—
Stone Riprap, Class A5			Sq. Yd.	600
Filter Fabric			Sq. Yd.	600
Joint or Crack Filling			Pound	290
Formed Concrete Repair (Depth <=5")			Sq. Ft.	12
Concrete Structures			Cu. Yd.	0.2
Reinforcement Bars, Epoxy Coated			Pound	40

**SUBSTRUCTURE DETAILS**

FAI 64 (EB) OVER  
SILVER CREEK  
FAI ROUTE 64 SECTION 82-8B  
ST. CLAIR COUNTY  
STATION 1046+44  
STRUCTURE NO. 082-0187



DESIGNED: CDB	DRAWN: P. Roy
CHECKED: DCD	CHECKED: CDB/DCD

FILE: F:\N0103 IL-08VW\*4 I-64 Bridge Repairs ISet\2\3-SNOB7-SilverCreek-EB\C3\pier.dgn

USER: P. Roy

DATE: 03/10/2006 14:00:17