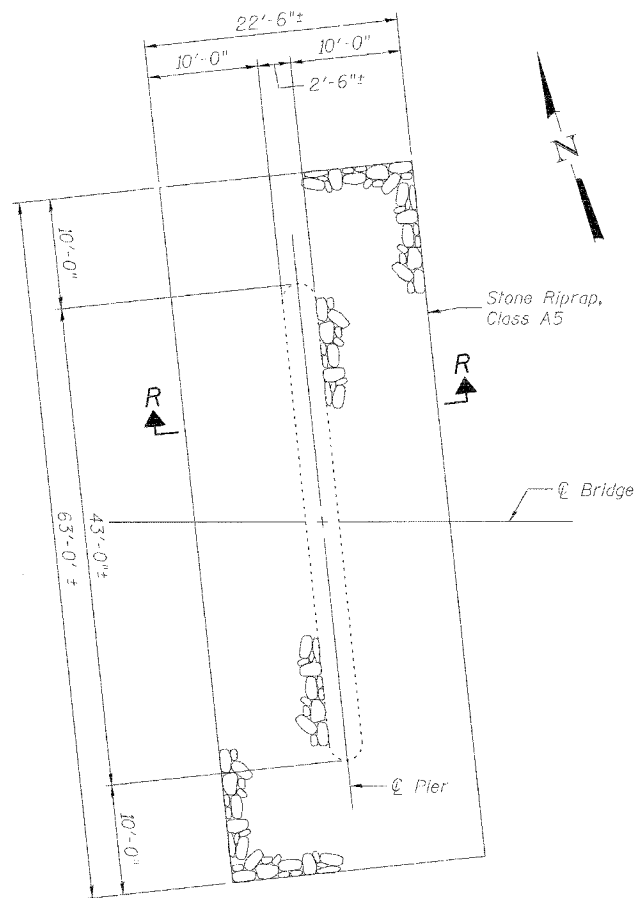


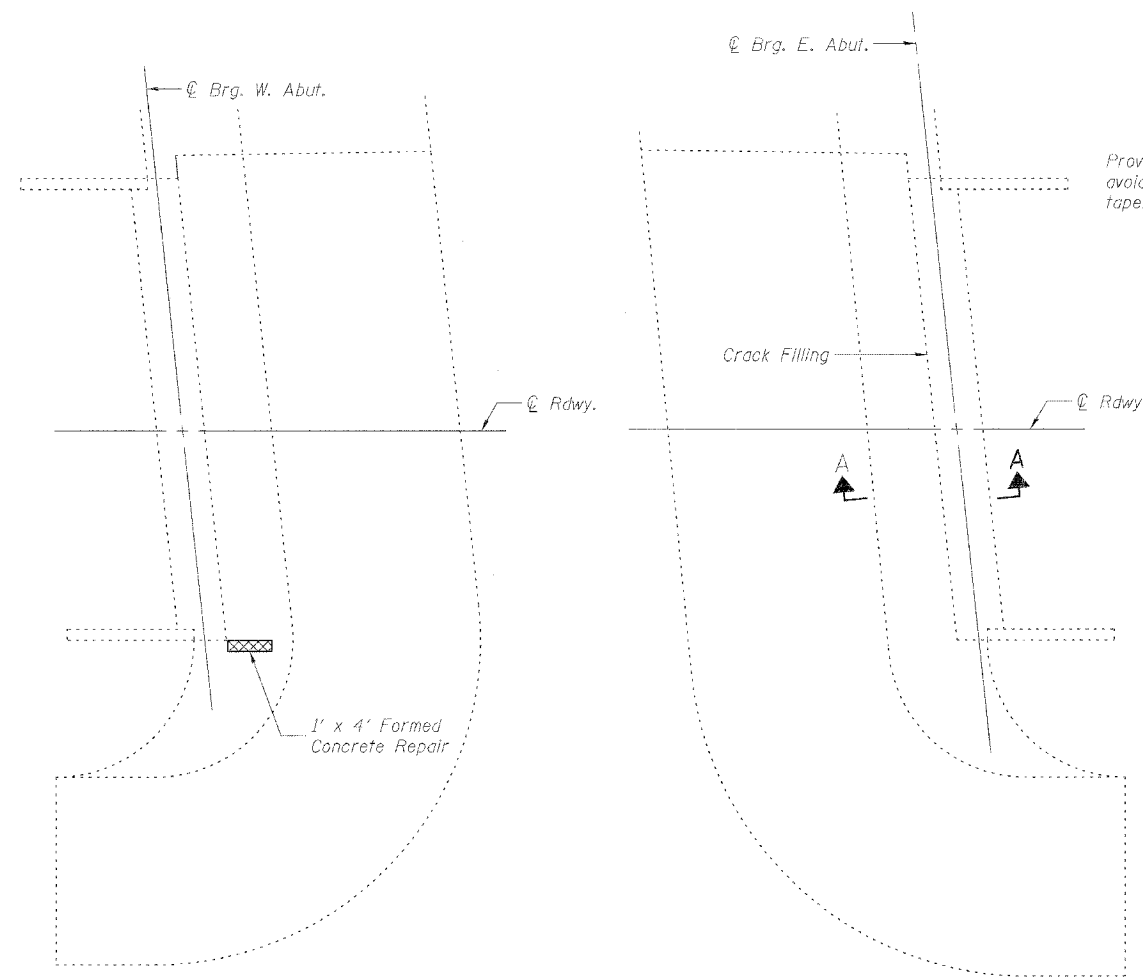
STATE OF ILLINOIS
DEPARTMENT OF TRANSPORTATION

SHEET 3
OF 3

F.A.I. RTE.	SECTION	COUNTY	TOTAL SHEETS	SHEET NO.
64	82-8B	ST. CLAIR	39	34
FED. ROAD DIST. NO.	ILLINOIS	FED. AID PROJECT		
CONTRACT NO. T6037				

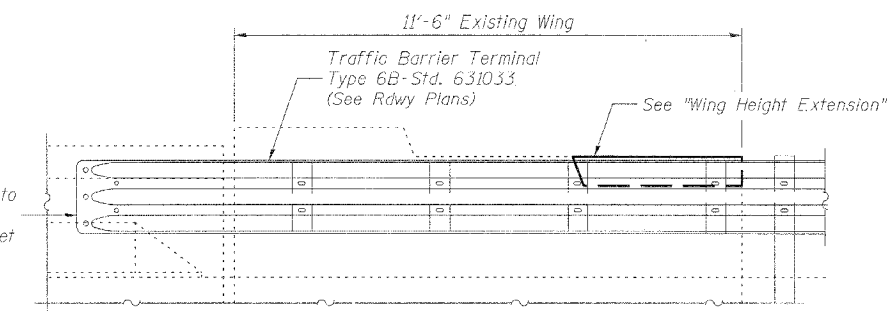


PLAN - RIPRAP AT PIERS
(Typical at Each Pier)

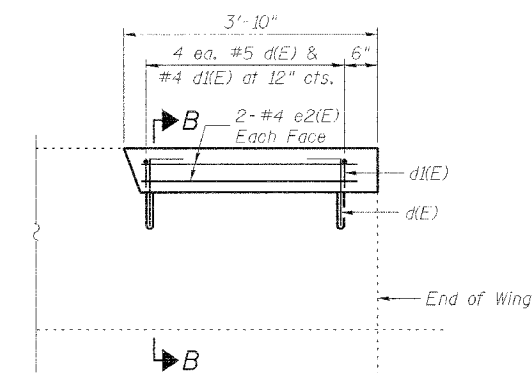


PLAN OF WEST SLOPEWALL

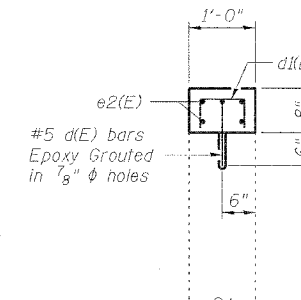
PLAN OF EAST SLOPEWALL



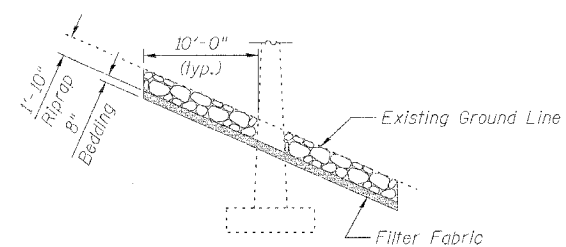
PROPOSED GUARDRAIL CONNECTION AT EAST ABUT.
(Replace existing guardrail connection)



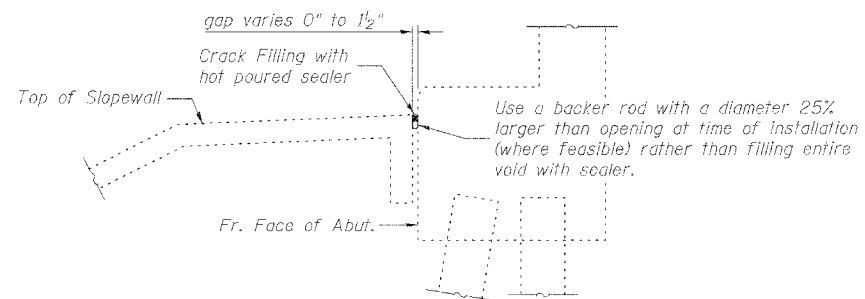
WING HEIGHT EXTENSION
(Both wings at East Abutment only)



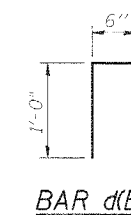
SECTION B-B



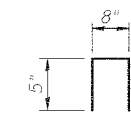
SECTION R-R



SECTION A-A



BAR d(E)



BAR d(E)

BILL OF MATERIAL

Bar	No.	Size	Length	Shape
d(E)	8	#5	1'-6"	L
d(E)	8	#4	1'-6"	Π
e2(E)	8	#4	3'-3"	—
Stone Riprap, Class A5		Sq. Yd.	292	
Filter Fabric		Sq. Yd.	292	
Joint or Crack Filling		Pound	132	
Formed Concrete Repair (Depth <5")		Sq. Ft.	4	
Concrete Structures		Cu. Yd.	0.2	
Reinforcement Bars, Epoxy Coated		Pound	40	

SUBSTRUCTURE DETAILS
FAI 64 (WB) OVER
LITTLE SILVER CREEK
FAI ROUTE 64 SECTION 82-8B
ST. CLAIR COUNTY
STATION 162+21 (WB)
STRUCTURE NO. 082-0188

FILE: F:\N01039_IL-08V\4-1-64_Bridge_Repairs (Set2)\4-SN088-LittleSilverCr-WB\03pier.dgn
USER: P. Roy
DATE: 03/10/2006 - 14:04:00

JD Johnson, Depp & Quisenberry
CONSULTING ENGINEERS
Springfield, Illinois

DESIGNED: CDB	DRAWN: P. Roy
CHECKED: DCD	CHECKED: CDB/DCD