

STATE OF ILLINOIS  
DEPARTMENT OF TRANSPORTATION  
DIVISION OF HIGHWAYS

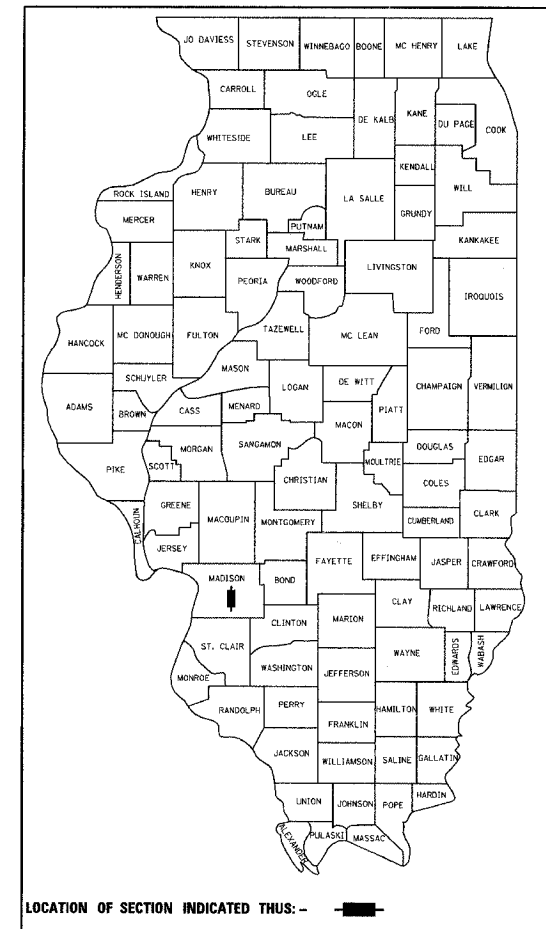
**PROPOSED  
HIGHWAY PLANS**  
FAP ROUTE 310 (IL-255)  
SECTION 60-14 & 60-14-1B  
PROJECT NO. NHF-0310 (094)  
MADISON COUNTY

GRADING AND DOUBLE BOX CULVERT  
C-98-167-01

F.A.P. RTE.	SECTION	COUNTY	TOTAL SHEETS	SHEET NO.
310	SECTION 60-14 SECTION 60-14-1B	MADISON	452	1

CONTRACT NO. 76321

D-98-037-92



STATE OF ILLINOIS  
DEPARTMENT OF TRANSPORTATION  
DIVISION OF HIGHWAYS

SUBMITTED March 23 2006  
Mark C. Farris  
DEPUTY DIRECTOR OF HIGHWAYS, REGION 5 ENGINEER

PASSED \_\_\_\_\_ 20\_\_\_\_  
ENGINEER OF DESIGN AND ENVIRONMENT

APPROVED \_\_\_\_\_ 20\_\_\_\_  
DIRECTOR, DIVISION OF HIGHWAYS

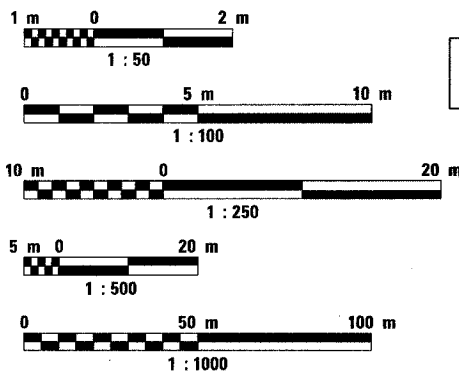
**WOOLPERT**  
WOOLPERT LLP  
4315 North Illinois Street,  
Suite 1C  
Belleville, Illinois 62226-1045  
618-277-7004  
Fax-618-277-6114

**PRINTED BY THE AUTHORITY  
OF THE STATE OF ILLINOIS**

FOR INDEX OF SHEETS  
AND IDOT HIGHWAY STANDARDS SEE SHEET 2

MICROFILMED \_\_\_\_\_  
REEL NUMBER \_\_\_\_\_  
AWARDED \_\_\_\_\_  
RESIDENT ENGINEER \_\_\_\_\_  
AS BUILT CHANGES WERE MADE  
ON THE FOLLOWING SHEETS

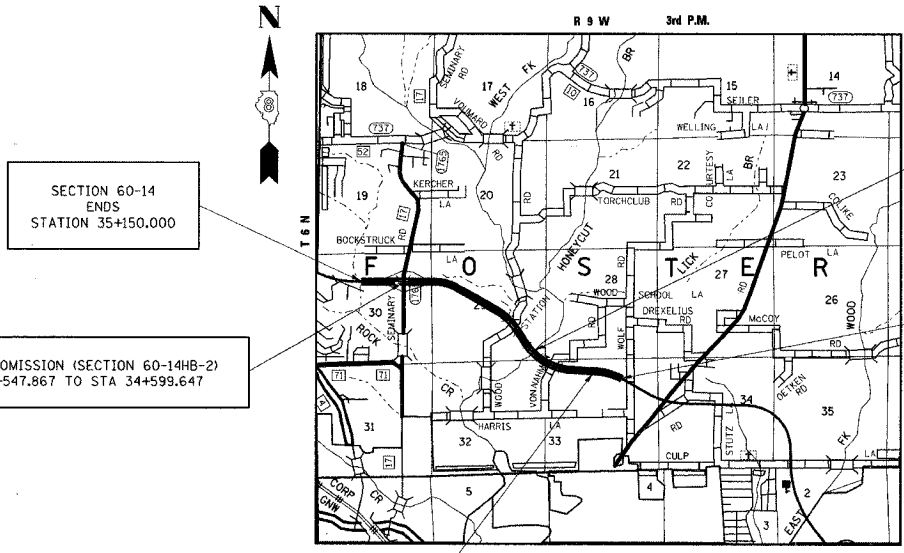
**METRIC RATIOS**



FULL SIZE PLANS HAVE BEEN PREPARED USING STANDARD  
ENGINEERING SCALES. REDUCED SIZED PLANS WILL NOT  
CONFORM TO STANDARD SCALES. IN MAKING MEASUREMENTS  
ON REDUCED PLANS, THE ABOVE SCALES MAY BE USED.

J.U.L.I.E.  
JOINT UTILITY LOCATION INFORMATION FOR EXCAVATION  
1-800-892-0123

CONTRACT NO. 76321

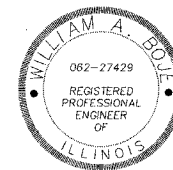


SECTION 60-14-1B  
DOUBLE 1.8m X 3.6m CAST-IN-PLACE  
REINFORCED CONCRETE BOX CULVERT  
STA 31+282.000  
SN 060-2044

GROSS LENGTH OF SECTION 60-14	= 4241.804m	= 4.242km
OMISSION 60-14B	= 219.659m	= 0.220km
OMISSION 60-14HB-2	= 51.780m	= 0.052km
TOTAL OMISSIONS	= 271.439m	= 0.272km
NET LENGTH OF SECTION 60-14	= 3970.365m	= 3.970km

**DESIGN DESIGNATION**

2750 (08) TRUNK 7.11 (B-20)



*William A. Boyle*  
ILLINOIS PROFESSIONAL ENGINEER NO. 062-27429 DATE 03-21-2006  
EXP. 11-30-2007

PROJECT ENGINEER PATTI J. LEBEAU (618) 346-3179  
SQUAD LEADER ART MUEHLFELD (618) 346-3209