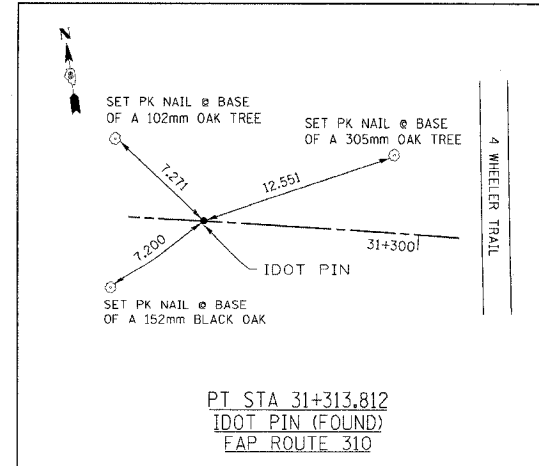
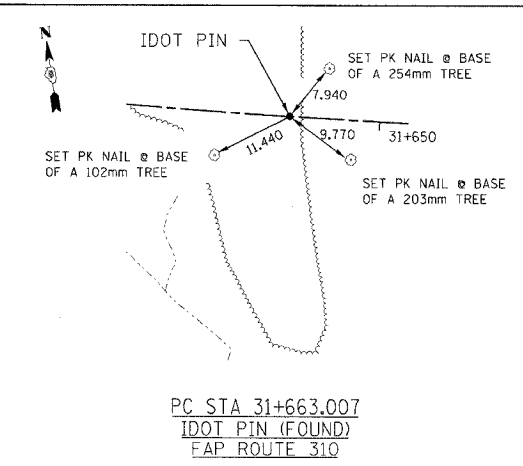


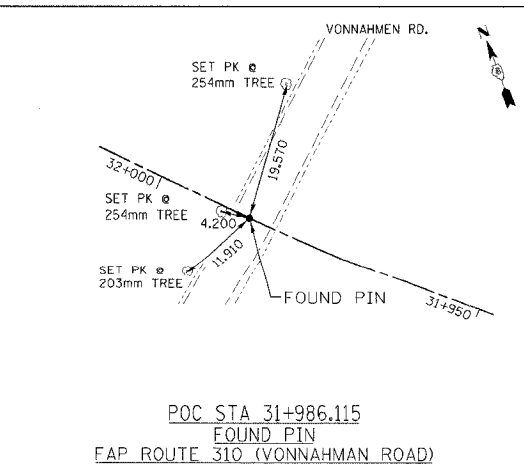
F.A.P. RTE.	SECTION	COUNTY	TOTAL SHEETS	SHEET NO.
310		MADISON	452	20
STA.		TO STA.		
FED. ROAD DIST. NO.		ILLINOIS		FED. AID PROJECT
SECTION 60-14		SECTION 60-14-1B		CONTRACT NO. 76321



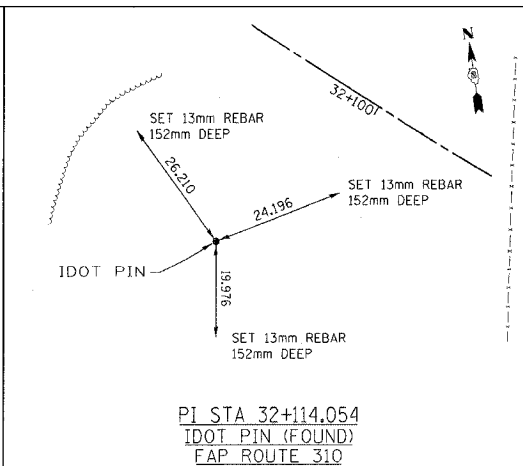
PT STA 31+313.812  
IDOT PIN (FOUND)  
FAP ROUTE 310



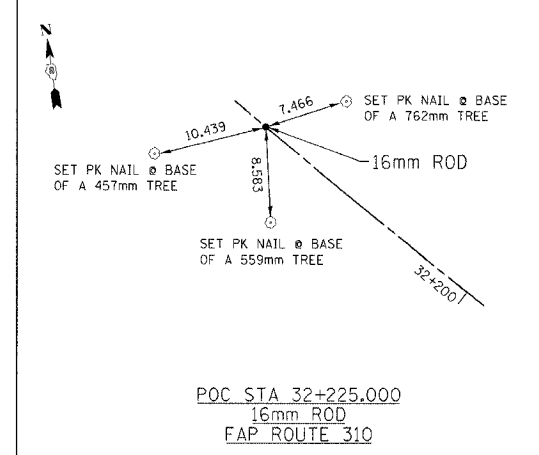
PC STA 31+663.007  
IDOT PIN (FOUND)  
FAP ROUTE 310



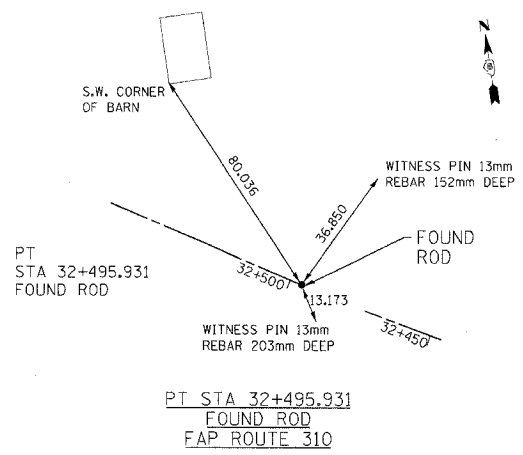
POC STA 31+986.115  
FOUND PIN  
FAP ROUTE 310 (VONNAHMAN ROAD)



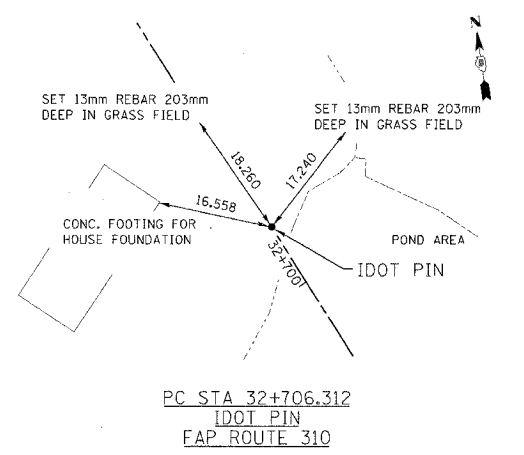
PI STA 32+114.054  
IDOT PIN (FOUND)  
FAP ROUTE 310



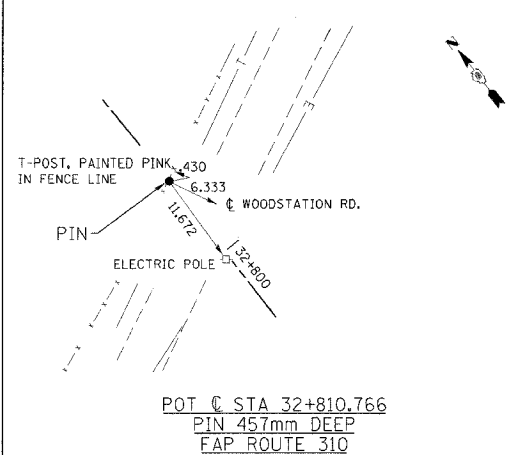
POC STA 32+225.000  
16mm ROD  
FAP ROUTE 310



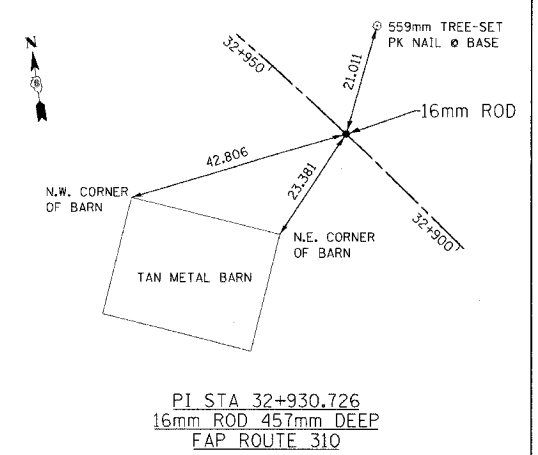
PT STA 32+495.931  
FOUND ROD  
FAP ROUTE 310



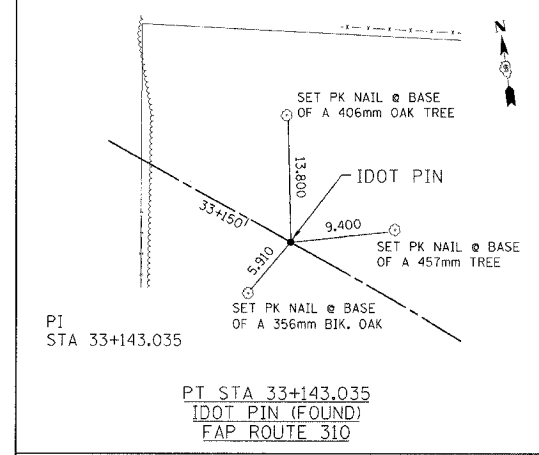
PC STA 32+706.312  
IDOT PIN  
FAP ROUTE 310



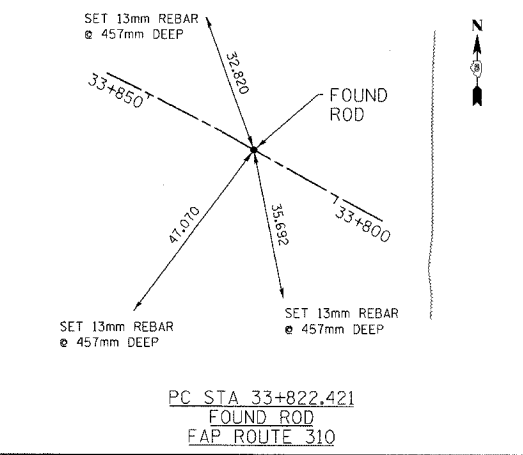
POT STA 32+810.766  
PIN 457mm DEEP  
FAP ROUTE 310



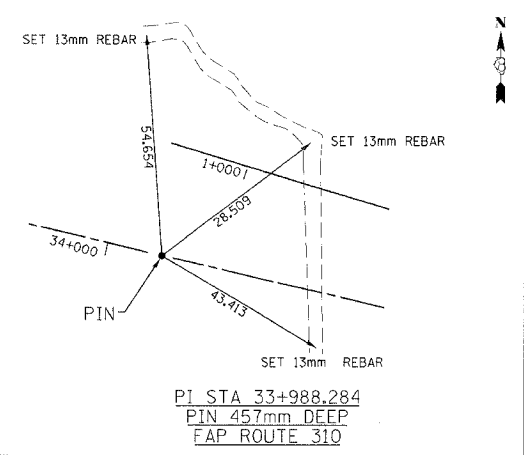
PI STA 32+930.726  
16mm ROD 457mm DEEP  
FAP ROUTE 310



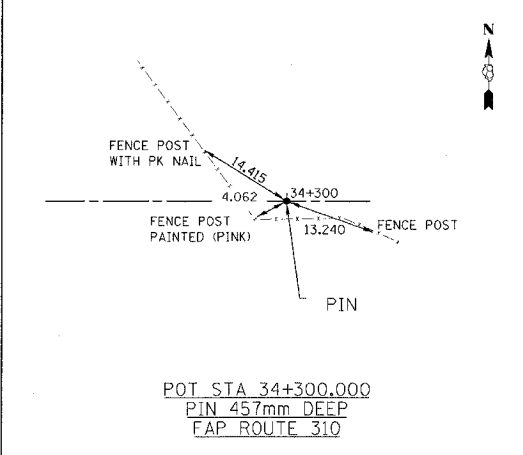
PI STA 33+143.035  
IDOT PIN (FOUND)  
FAP ROUTE 310



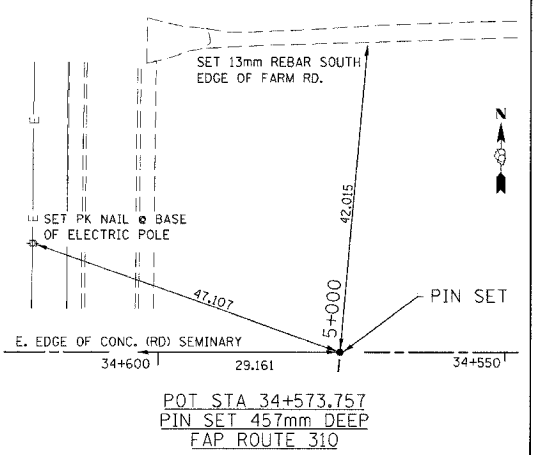
PC STA 33+822.421  
FOUND ROD  
FAP ROUTE 310



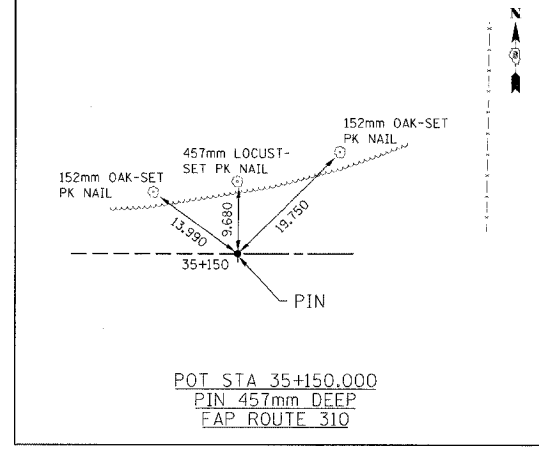
PI STA 33+988.284  
PIN 457mm DEEP  
FAP ROUTE 310



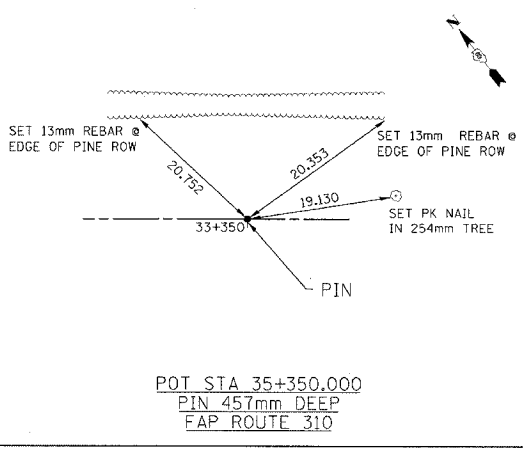
POT STA 34+300.000  
PIN 457mm DEEP  
FAP ROUTE 310



POT STA 34+573.757  
PIN SET 457mm DEEP  
FAP ROUTE 310



POT STA 35+150.000  
PIN 457mm DEEP  
FAP ROUTE 310



POT STA 35+350.000  
PIN 457mm DEEP  
FAP ROUTE 310

REVISIONS	
NAME	DATE

ILLINOIS DEPARTMENT OF TRANSPORTATION  
**TIE POINTS**  
FAP ROUTE 310  
SECTION 60-14, 60-14-1B  
MADISON COUNTY  
DRAWN BY CLARK  
CHECKED BY STEUART  
DATE