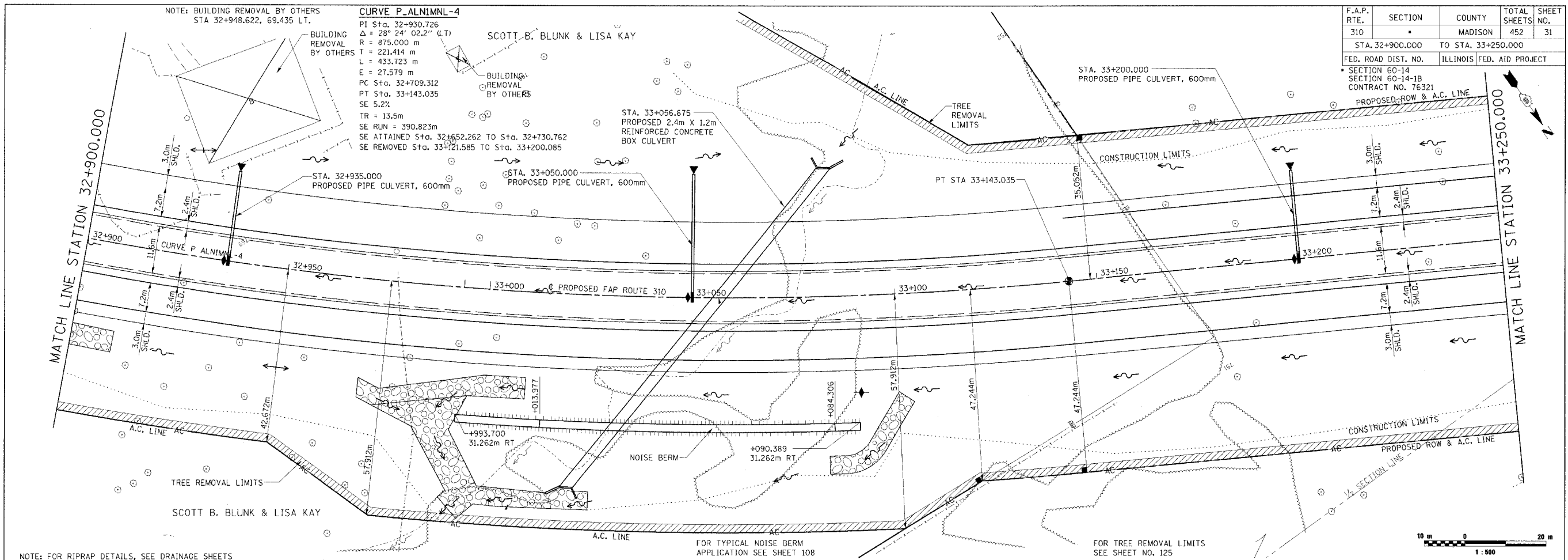


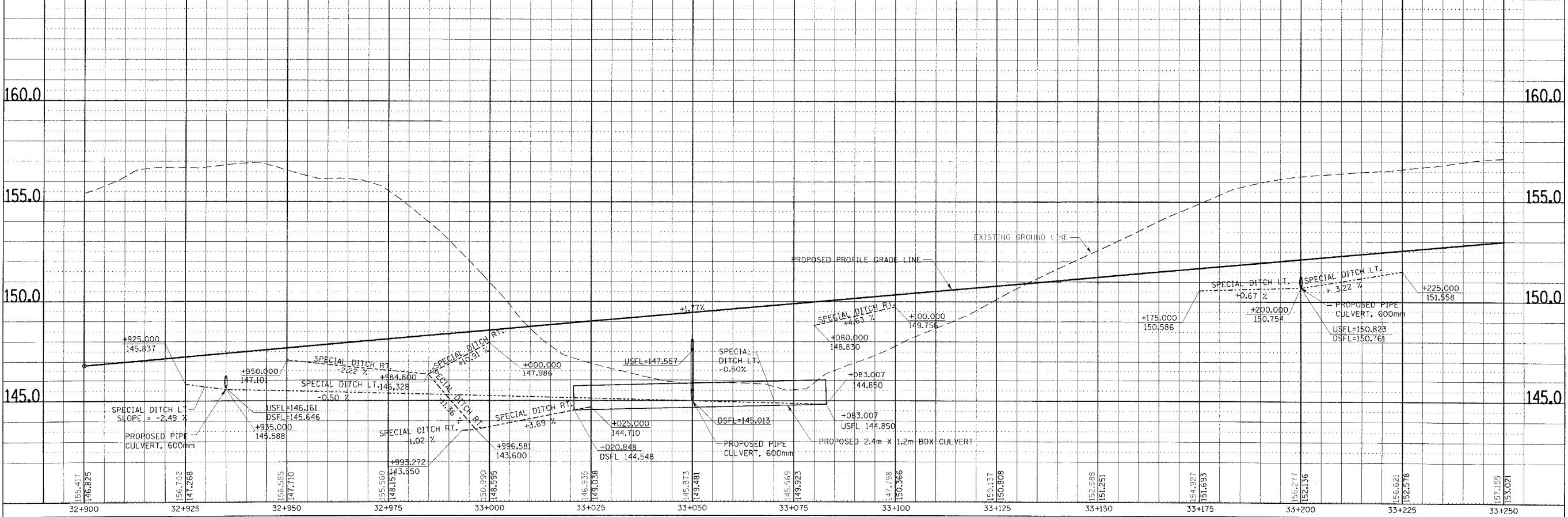
| F.A.P. RTE. | SECTION | COUNTY | TOTAL SHEETS | SHEET NO. |
|---------------------|---------|---------------------------|--------------|-----------|
| 310 | | MADISON | 452 | 31 |
| STA. 32+900.000 | | TO STA. 33+250.000 | | |
| FED. ROAD DIST. NO. | | ILLINOIS FED. AID PROJECT | | |

SECTION 60-14
SECTION 60-14-1B
CONTRACT NO. 76321
PROPOSED ROW & A.C. LINE

| | | |
|--------------------|----|------|
| FINAL SURVEYED | BY | DATE |
| SURVEY PLOTTED | | |
| NOTE BOOK TEMPLATE | | |
| AREAS | | |
| AREAS CHECKED | | |
| NO. | | |



| | | |
|--------------------|----|------|
| ORIGINAL SURVEYED | BY | DATE |
| SURVEY PLOTTED | | |
| NOTE BOOK TEMPLATE | | |
| AREAS | | |
| AREAS CHECKED | | |
| NO. | | |



PLAN & PROFILE, FAP ROUTE 310, STA. 32+900.000 TO STA. 33+250.000