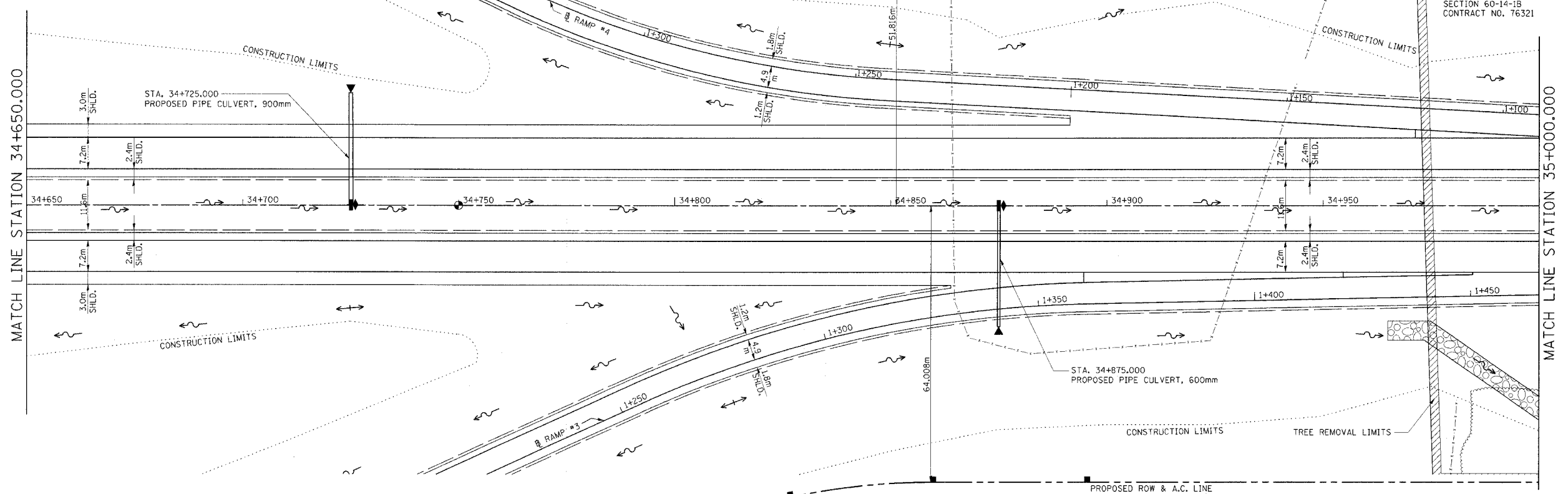


F.A.P. R.T.E.	SECTION	COUNTY	TOTAL SHEETS	SHEET NO.
310		MADISON	452	36
STA. 34+650.000		TO STA. 35+000.000		
FED. ROAD DIST. NO.		ILLINOIS FED. AID PROJECT		
		SECTION 60-14 SECTION 60-14-1B CONTRACT NO. 76321		

COBY E. MAXEINER

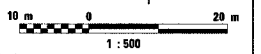
PROPOSED ROW & A.C. LINE



NOTE: FOR RIPRAP DETAILS, SEE DRAINAGE SHEETS

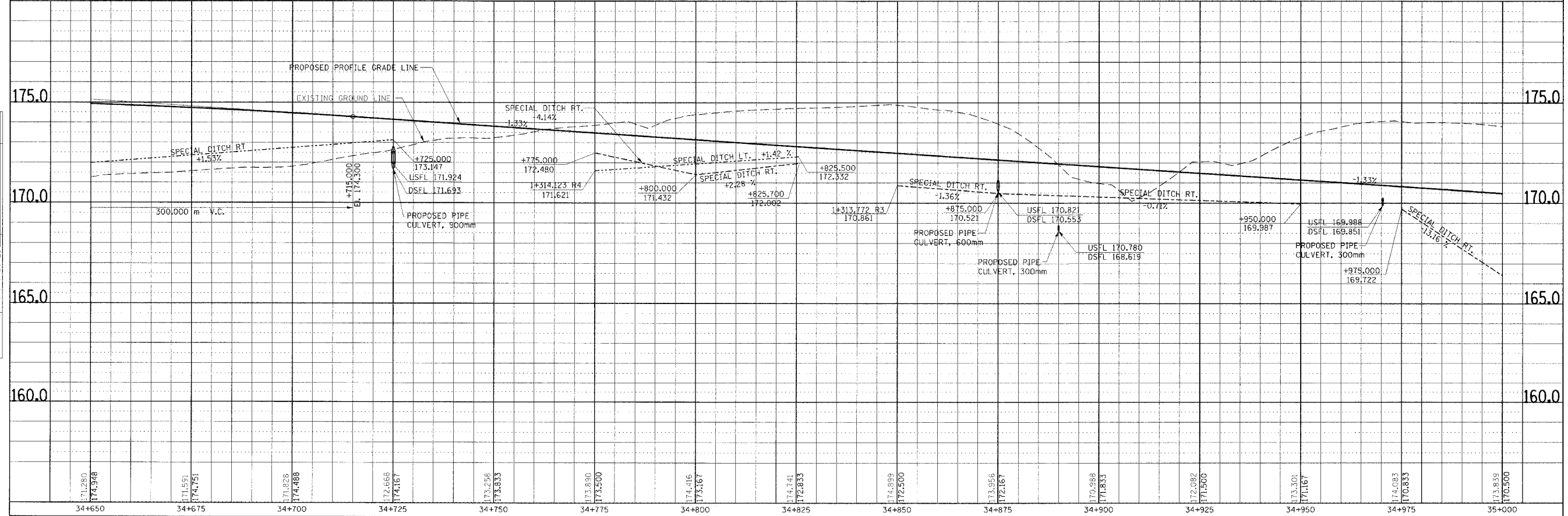
FOR TREE REMOVAL LIMITS  
SEE SHEET NO. 125

REX R. & ALLA MAXEINER



FINAL SURVEY PLOTTED	BY	DATE
NOTE BOOK TEMPLATE		
AREAS CHECKED		
NO.		

ORIGINAL SURVEY PLOTTED	BY	DATE
NOTE BOOK TEMPLATE		
AREAS CHECKED		
NO.		



PLAN & PROFILE, FAP 310, STA. 34+650.000 TO STA. 35+000.000