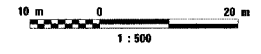
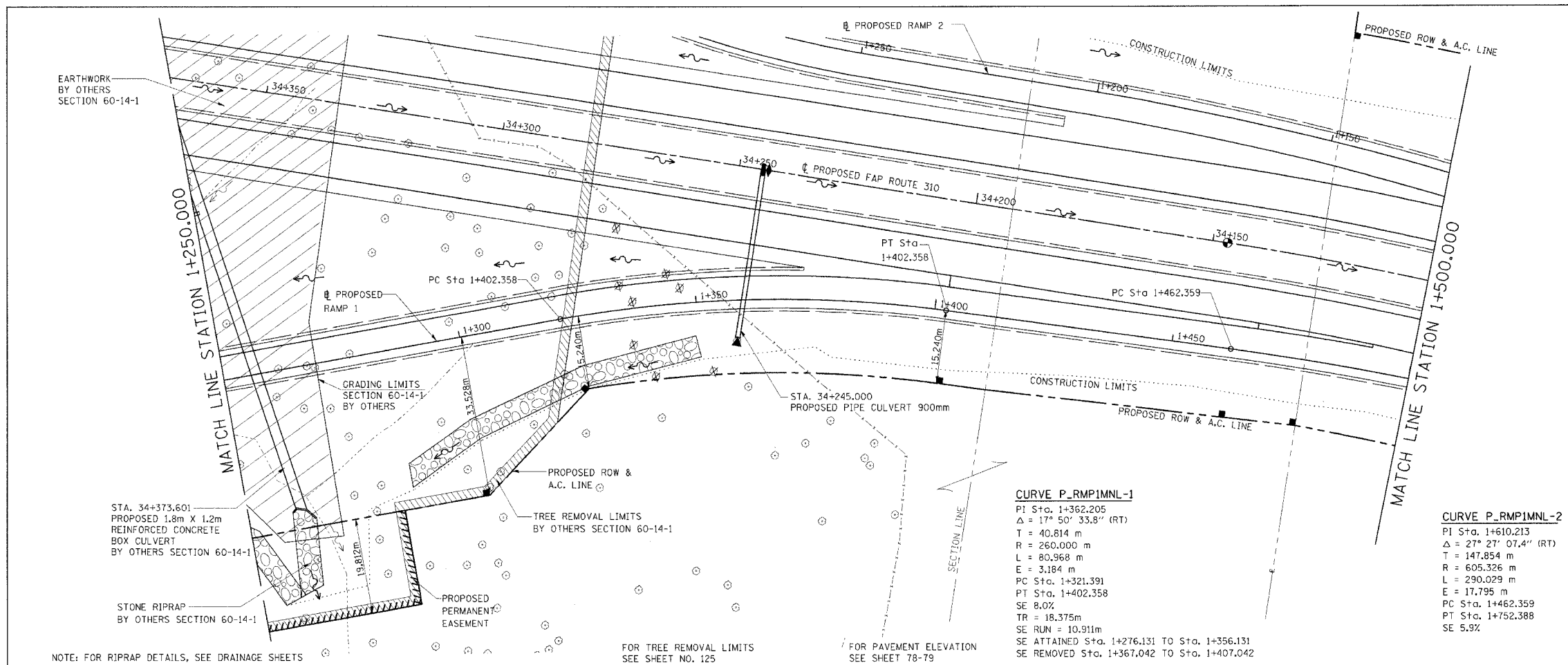


F.A. RTE.	SECTION	COUNTY	TOTAL SHEETS	SHEET NO.
310		MADISON	452	39
STA. 1+250.000		TO STA. 1+500.000		
FED. ROAD DIST. NO.		ILLINOIS	FED. AID PROJECT	
SECTION 60-14 SECTION 60-14-1B CONTRACT NO. 76321				



FINAL SURVEY	BY	DATE
NO.		
NO.		
NO.		

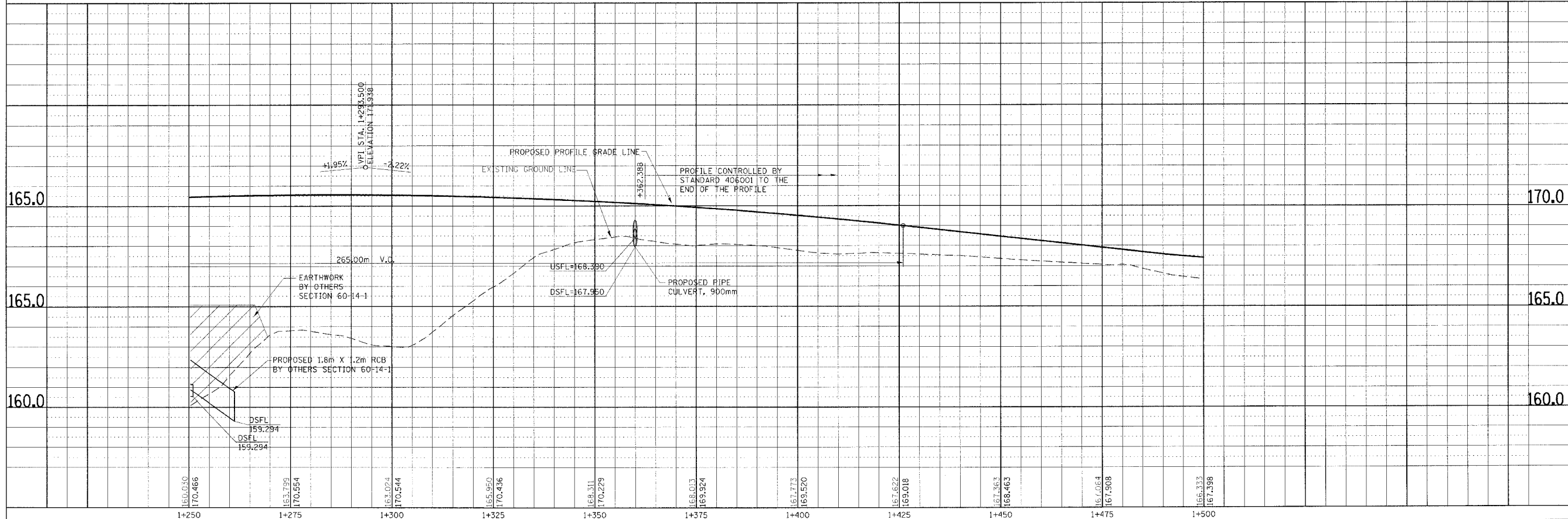
ORIGINAL SURVEY	BY	DATE
NO.		
NO.		
NO.		



**CURVE P\_RMP1MNL-1**  
 PI Sta. 1+362.205  
 $\Delta = 17^\circ 50' 33.8''$  (RT)  
 T = 40.814 m  
 R = 260.000 m  
 L = 80.968 m  
 E = 3.184 m  
 PC Sta. 1+321.391  
 PT Sta. 1+402.358  
 SE 8.0%  
 TR = 18.375 m  
 SE RUN = 10.911 m  
 SE ATTAINED Sta. 1+276.131 TO Sta. 1+356.131  
 SE REMOVED Sta. 1+367.042 TO Sta. 1+407.042

**CURVE P\_RMP1MNL-2**  
 PI Sta. 1+610.213  
 $\Delta = 27^\circ 27' 07.4''$  (RT)  
 T = 147.854 m  
 R = 605.326 m  
 L = 290.029 m  
 E = 17.795 m  
 PC Sta. 1+462.359  
 PT Sta. 1+752.388  
 SE 5.9%

NOTE: FOR RIPRAP DETAILS, SEE DRAINAGE SHEETS  
 FOR TREE REMOVAL LIMITS SEE SHEET NO. 125  
 FOR PAVEMENT ELEVATION SEE SHEET 78-79



PLAN & PROFILE, RAMP 1, STA. 1+250.000 TO STA. 1+500.000