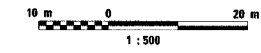


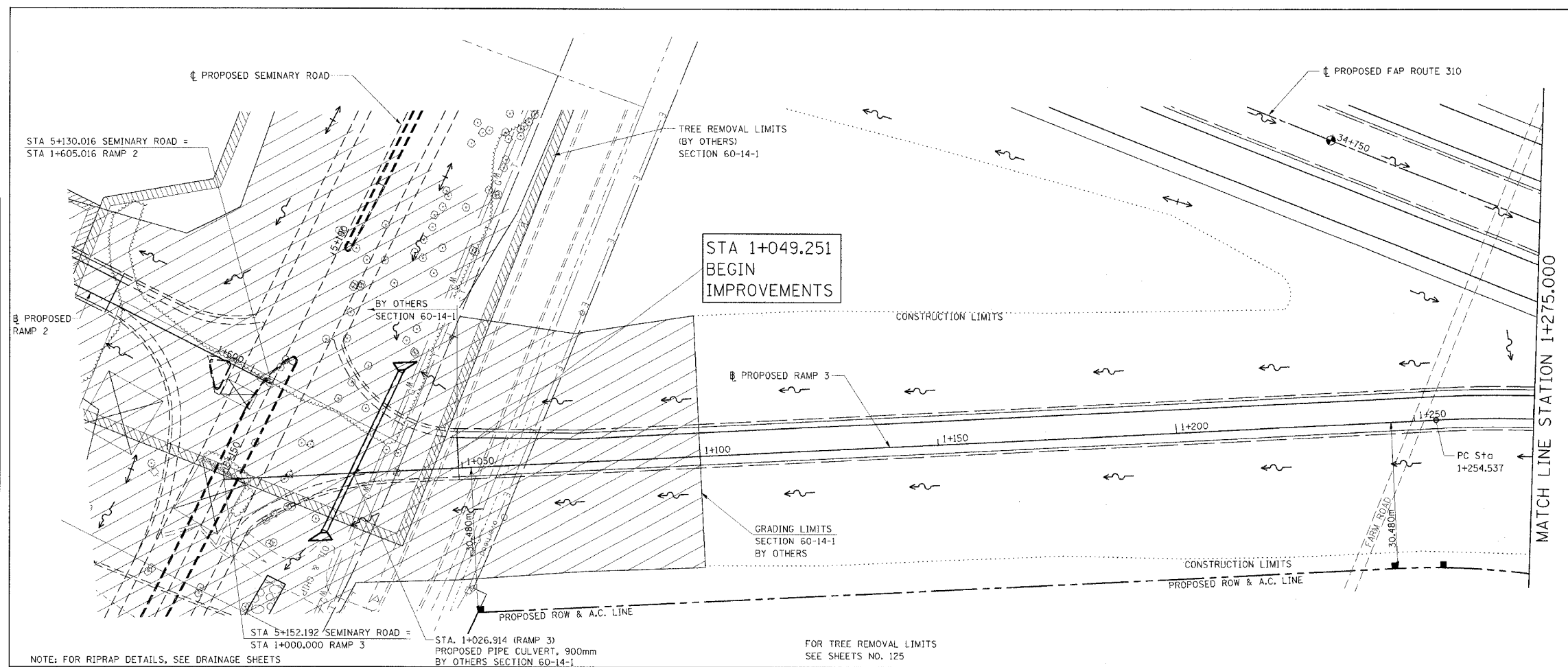
F.A.P. RTE.	SECTION	COUNTY	TOTAL SHEETS	SHEET NO.
310	*	MADISON	452	43
STA. 1+000.000		TO STA. 1+275.000		
FED. ROAD DIST. NO.		ILLINOIS	FED. AID PROJECT	
SECTION 60-14 SECTION 60-14-1B CONTRACT NO. 76321				



CURVE P_RMP3MNL-1
 PI Sta. 1+308.272
 $\Delta = 23^\circ 21' 15.2''$ (RT)
 T = 53.735 m
 R = 260.000 m
 L = 105.978 m
 E = 5.495 m
 PC Sta. 1+254.537
 PT Sta. 1+360.515
 SE 8.0%
 TR = 18.375m
 SE RUN = 39.578m
 SE ATTAINED Sta. 1+200.937 TO Sta. 1+280.937
 SE REMOVED Sta. 1+320.515 TO Sta. 1+400.515

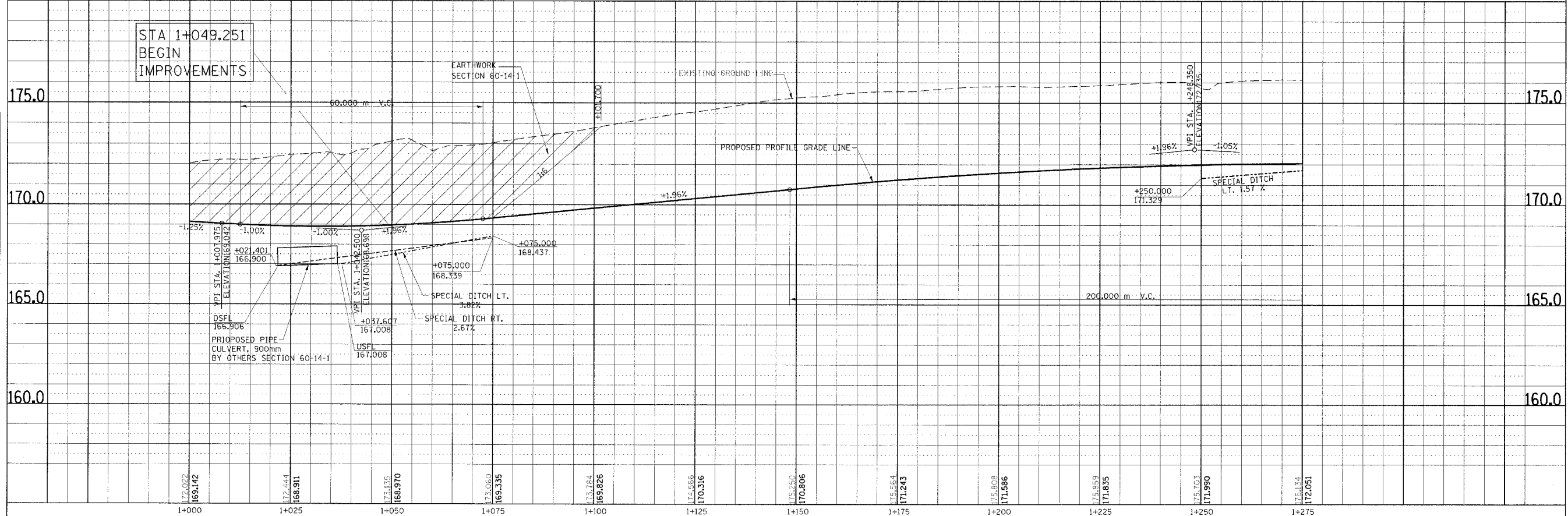


NO.	AREAS CHECKED	TEMPLATE	DATE



NOTE: FOR RIPRAP DETAILS, SEE DRAINAGE SHEETS
 FOR TREE REMOVAL LIMITS SEE SHEETS NO. 125

NO.	AREAS CHECKED	TEMPLATE	DATE



PLAN & PROFILE, RAMP 3, STA. 1+000.000 TO STA. 1+275.000