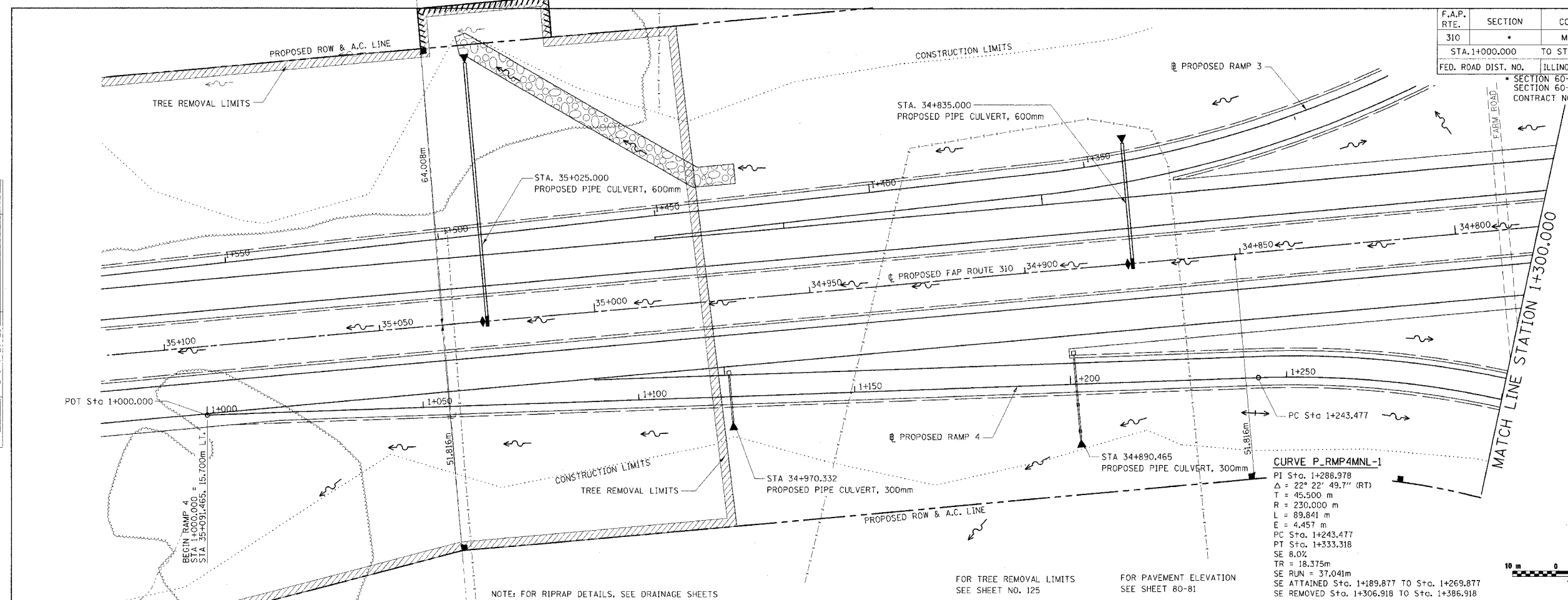
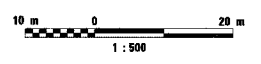


|                     |         |                           |              |           |
|---------------------|---------|---------------------------|--------------|-----------|
| F.A.P. RTE.         | SECTION | COUNTY                    | TOTAL SHEETS | SHEET NO. |
| 310                 | *       | MADISON                   | 452          | 46        |
| STA. 1+000.000      |         | TO STA. 1+300.000         |              |           |
| FED. ROAD DIST. NO. |         | ILLINOIS FED. AID PROJECT |              |           |
| SECTION 60-14       |         | SECTION 60-14-1B          |              |           |
| CONTRACT NO. 76321  |         |                           |              |           |



**CURVE P\_RMP4MNL-1**  
 PI Sta. 1+288.978  
 $\Delta = 22^\circ 22' 49.74''$  (RT)  
 T = 45.500 m  
 R = 230.000 m  
 L = 89.841 m  
 E = 4.457 m  
 PC Sta. 1+243.477  
 PT Sta. 1+333.318  
 SE 8.0%  
 TR = 18.375m  
 SE RUN = 37.041m  
 SE ATTAINED Sta. 1+189.877 TO Sta. 1+269.877  
 SE REMOVED Sta. 1+306.918 TO Sta. 1+386.918

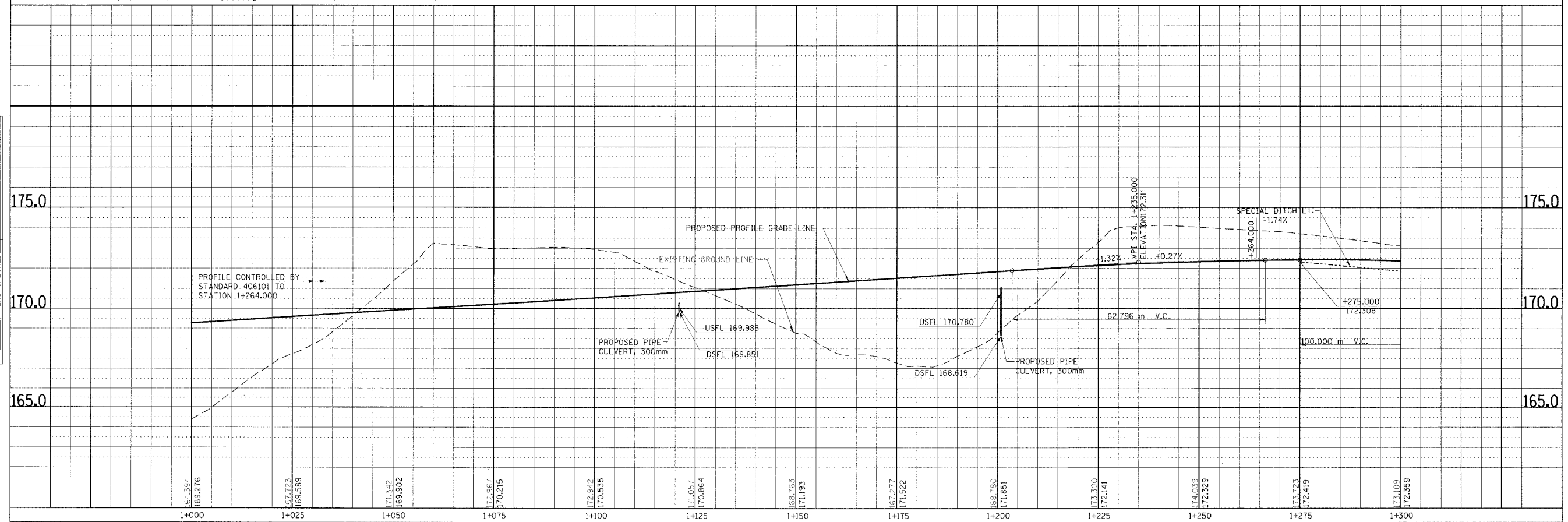


NOTE: FOR RIPRAP DETAILS, SEE DRAINAGE SHEETS

FOR TREE REMOVAL LIMITS SEE SHEET NO. 125  
 FOR PAVEMENT ELEVATION SEE SHEET 80-81

|                      |    |      |
|----------------------|----|------|
| FINAL SURVEY PLOTTED | BY | DATE |
| NOTE BOOK TEMPLATE   |    |      |
| AREAS CHECKED        |    |      |
| NO.                  |    |      |

|                         |    |      |
|-------------------------|----|------|
| ORIGINAL SURVEY PLOTTED | BY | DATE |
| NOTE BOOK TEMPLATE      |    |      |
| AREAS CHECKED           |    |      |
| NO.                     |    |      |



PLAN & PROFILE, RAMP 4, STA. 1+000.000 TO STA. 1+300.000

DATE PLOTTED: 05/14/2008 10:58:30 AM