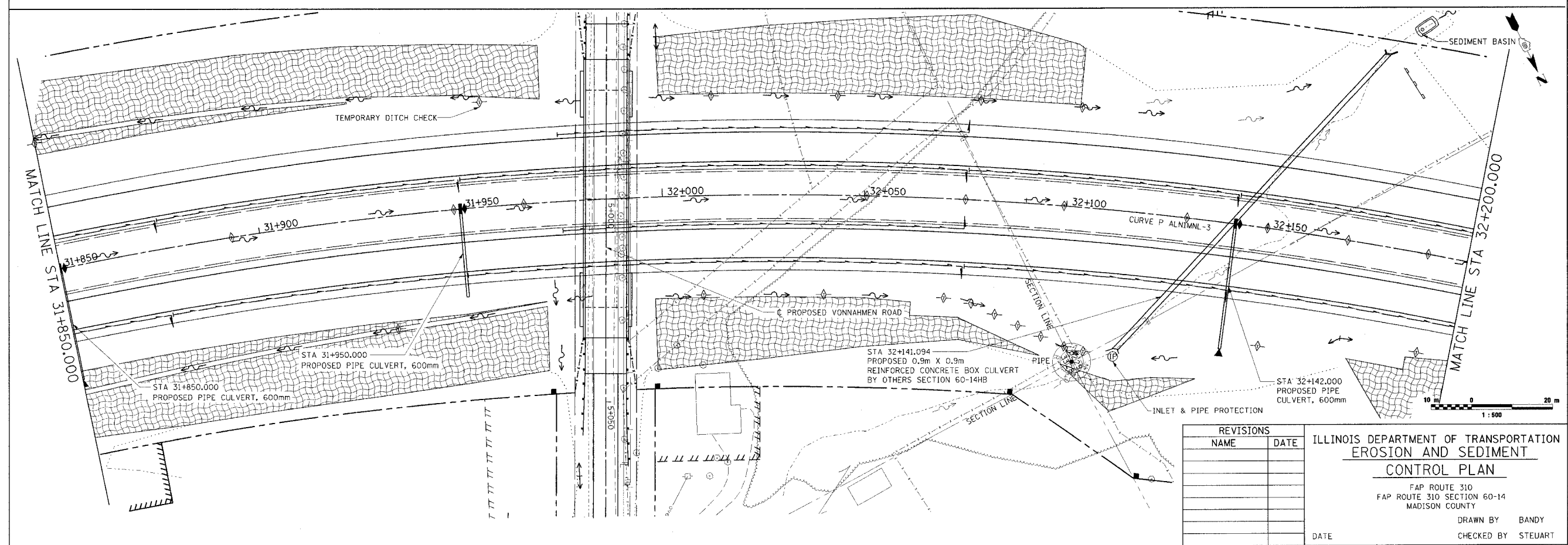
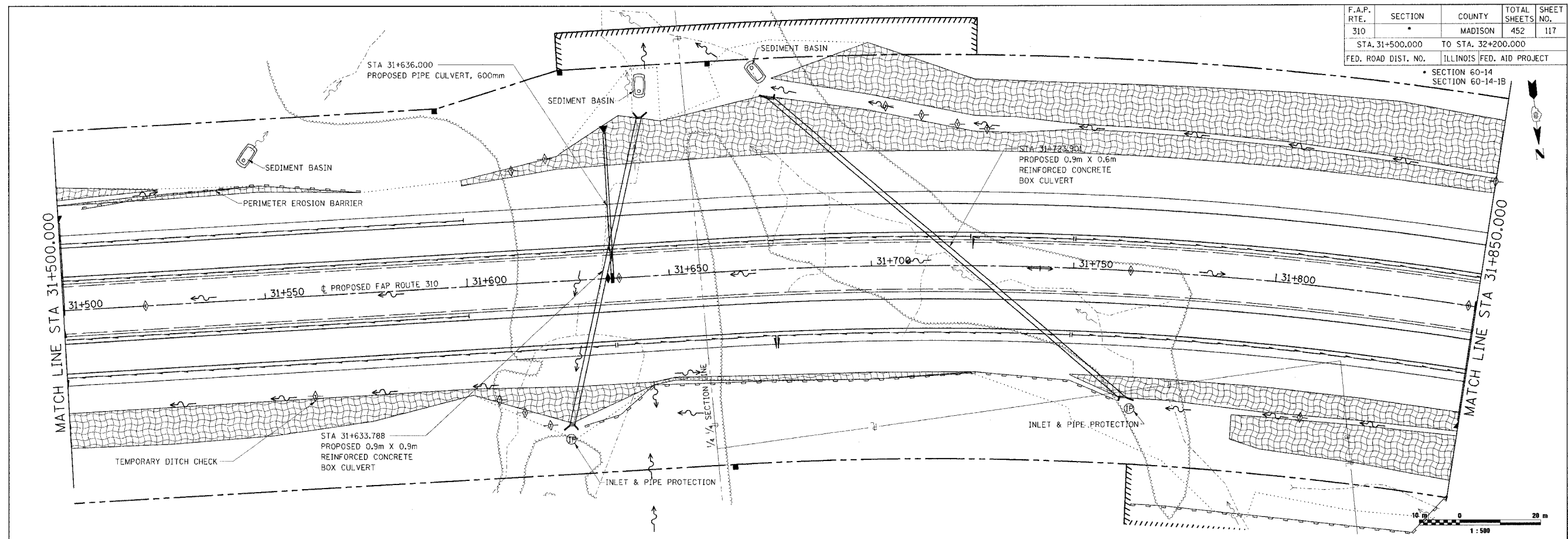


F.A.P. RTE.	SECTION	COUNTY	TOTAL SHEETS	SHEET NO.
310		MADISON	452	117
STA. 31+500.000		TO STA. 32+200.000		
FED. ROAD DIST. NO.		ILLINOIS FED. AID PROJECT		
		SECTION 60-14		
		SECTION 60-14-1B		



REVISIONS	
NAME	DATE

ILLINOIS DEPARTMENT OF TRANSPORTATION  
**EROSION AND SEDIMENT CONTROL PLAN**  
 FAP ROUTE 310  
 FAP ROUTE 310 SECTION 60-14  
 MADISON COUNTY  
 DRAWN BY BANDY  
 CHECKED BY STEUART  
 DATE

EROSION AND SEDIMENT CONTROL PLAN, FAP ROUTE 310, STA. 31+500.000 TO STA. 32+200.000

I:\WORK\EROSION\EROSION.DWG 05/17/2007 10:01:15 AM