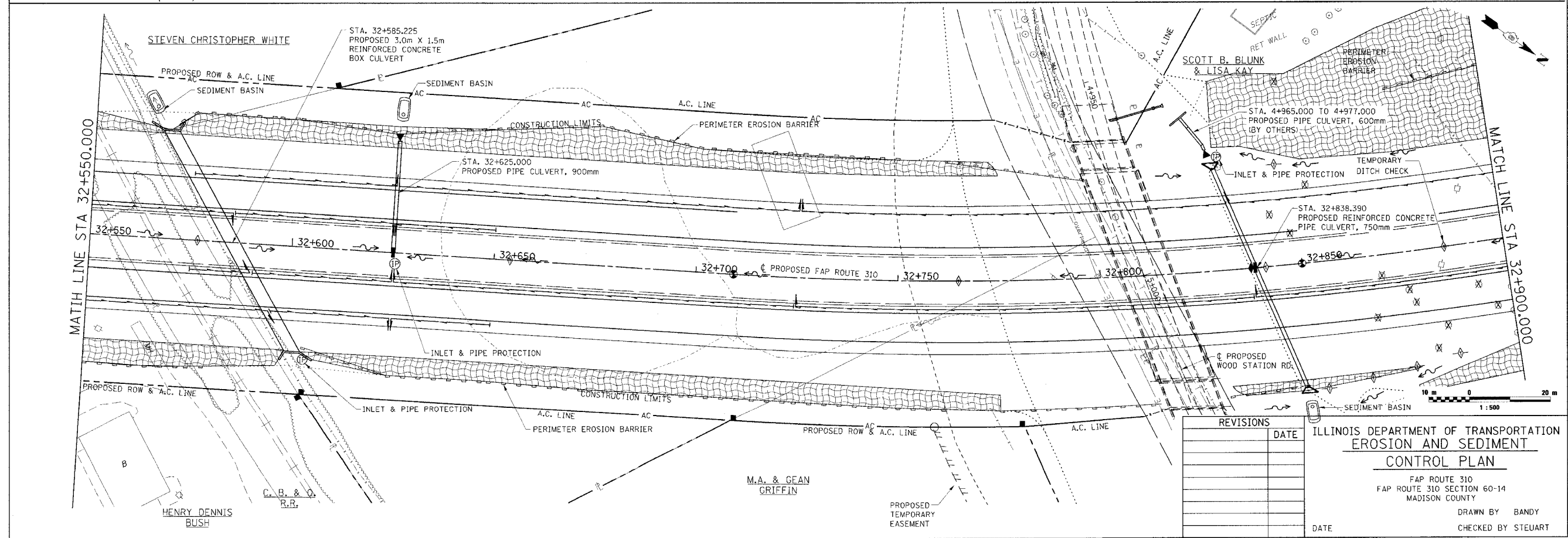
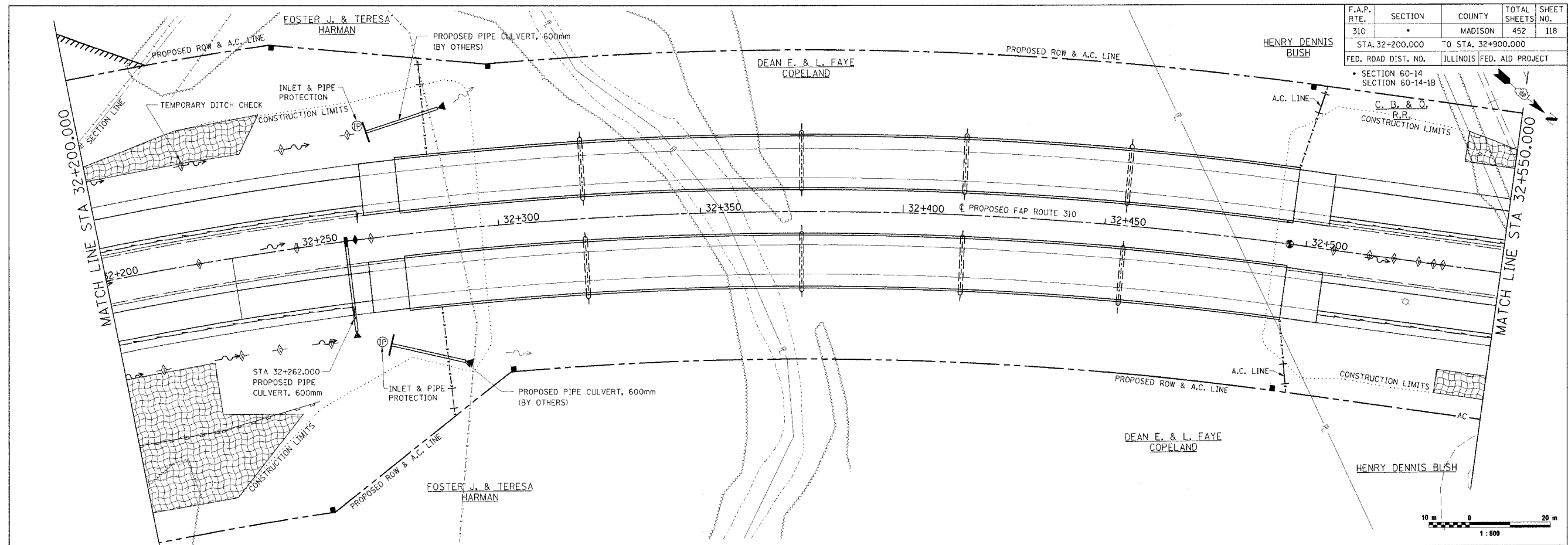


F.A.P. RTE.	SECTION	COUNTY	TOTAL SHEETS	SHEET NO.
310		MADISON	452	118
STA. 32+200.000		TO STA. 32+900.000		
FED. ROAD DIST. NO.		ILLINOIS FED. AID PROJECT		
SECTION 60-14 SECTION 60-14-1B				



REVISIONS	DATE

ILLINOIS DEPARTMENT OF TRANSPORTATION
EROSION AND SEDIMENT CONTROL PLAN
 FAP ROUTE 310
 FAP ROUTE 310 SECTION 60-14
 MADISON COUNTY
 DRAWN BY BANDY
 CHECKED BY STEUART
 DATE

EROSION AND SEDIMENT CONTROL PLAN, FAP ROUTE 310, STA. 32+200.000 TO STA. 32+900.000