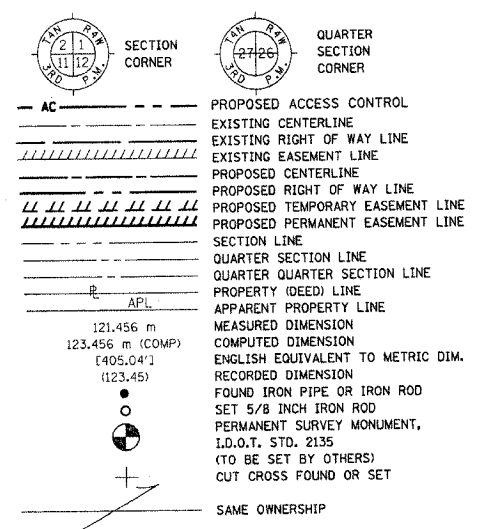


PART OF THE NW 1/4 OF SECTION 33, T6N, R9W, OF THE 3RD PM, MADISON COUNTY, ILLINOIS

BEARINGS SHOWN HEREON ARE BASED ON SURVEY CONTROL DATA AS PROVIDED BY THE ILLINOIS DEPARTMENT OF TRANSPORTATION.

FAP ROUTE	SECTION	COUNTY	TOTAL SHEETS	SHEET NO.
310	60-14, 60-15	MADISON	462	128

LEGEND



- STAKING OF PROPOSED RIGHT OF WAY. SET 5/8 INCH METAL ROD WITH DIVISION OF HIGHWAY SURVEY MARKER TO MONUMENT THE POSITION SHOWN. IDENTIFIED BY INSCRIPTION DATA AND SURVEYORS REGISTRATION NUMBER.
- M STAKING OF PROPOSED RIGHT OF WAY IN CULTIVATED AREAS. SET 5/8 INCH METAL ROD WITH DIVISION OF HIGHWAY SURVEY MARKER 20 INCHES BELOW GROUND SURFACE TO MONUMENT THE POSITION SHOWN. IDENTIFIED BY INSCRIPTION DATA AND SURVEYORS REGISTRATION NUMBER.

STATE OF ILLINOIS )  
COUNTY OF ) SS

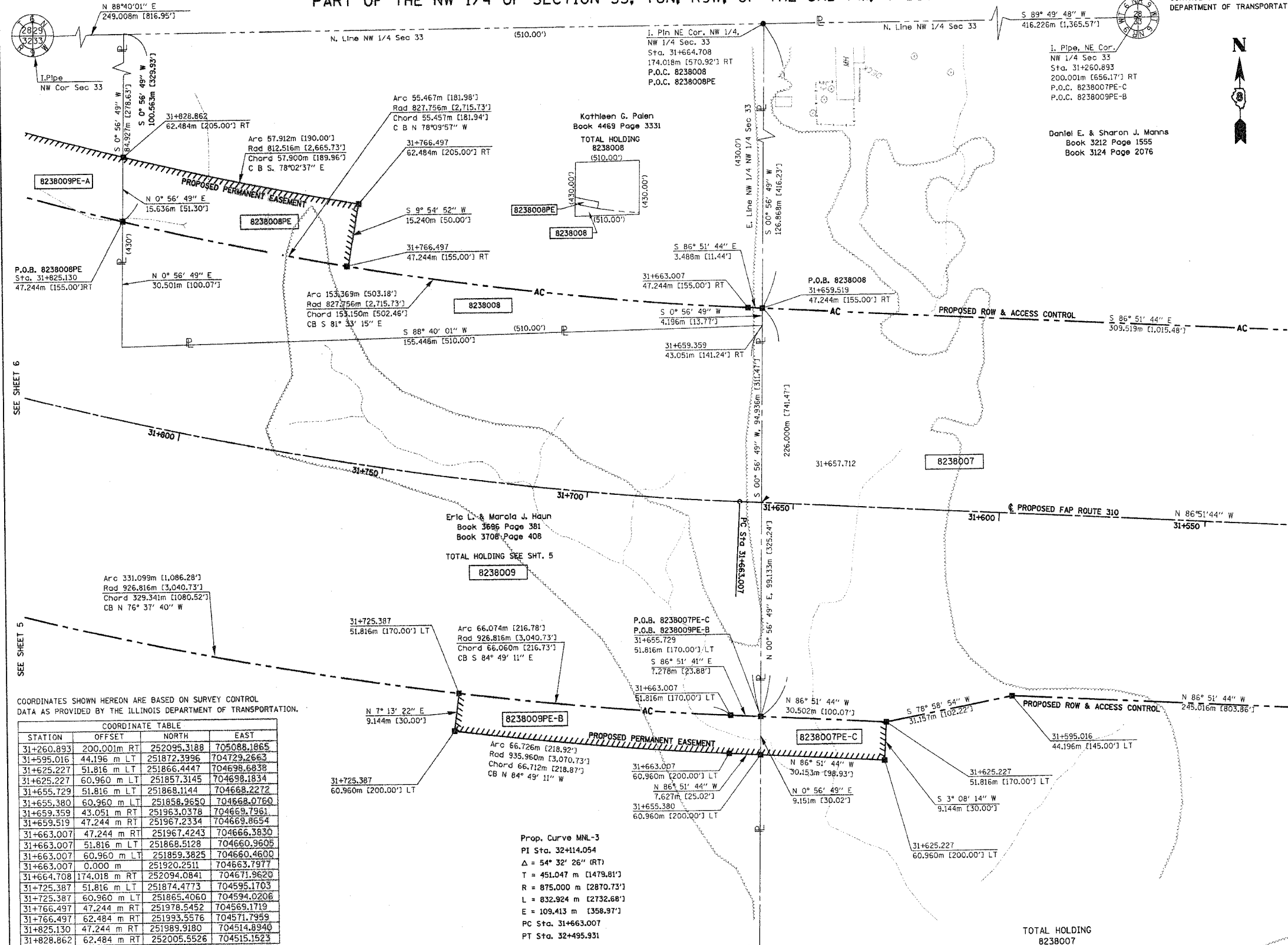
THIS IS TO CERTIFY THAT I, THOMAS M. DRONE, AN ILLINOIS PROFESSIONAL LAND SURVEYOR, HAS SURVEYED THE PLAT OF HIGHWAYS SHOWN HEREON IN SECTION 33, TOWNSHIP 6 NORTH, RANGE 9 WEST, OF THE THIRD PRINCIPAL MERIDIAN, MADISON COUNTY, THAT THE SURVEY IS TRUE AND COMPLETE AS SHOWN TO THE BEST OF MY KNOWLEDGE AND BELIEF, THAT THE PLAT CORRECTLY REPRESENTS SAID SURVEY, THAT ALL MONUMENTS FOUND AND ESTABLISHED ARE OF PERMANENT QUALITY AND OCCUPY THE POSITIONS SHOWN THEREON AND THAT THE MONUMENTS ARE SUFFICIENT TO ENABLE THE SURVEY TO BE RETRACED. MADE FOR THE DEPARTMENT OF TRANSPORTATION, STATE OF ILLINOIS.

DATED April 2, 2004  
Thomas M. Drone  
THOMAS M. DRONE, PLS #2273



HURST-ROSCH ENGINEERS, INC.  
2657 W. LAWRENCE - SPRINGFIELD, ILLINOIS 62704  
217-787-1199

ILLINOIS DEPARTMENT OF TRANSPORTATION  
PLAT OF HIGHWAYS  
FAP ROUTE 310 (IL 255)  
SECTION 60-14  
MADISON COUNTY  
JOB NO. R-98-038-92  
STATION 31+550 TO STATION 31+800  
SCALE 1:500 SHEET 4 OF 38  
ILLINOIS DEPARTMENT OF TRANSPORTATION  
DIVISION OF HIGHWAYS/DISTRICT 8  
1102 EASTPORT PLAZA DRIVE  
COLLINGSVILLE, ILLINOIS 62234-6198



COORDINATES SHOWN HEREON ARE BASED ON SURVEY CONTROL DATA AS PROVIDED BY THE ILLINOIS DEPARTMENT OF TRANSPORTATION.

STATION	COORDINATE TABLE		
	OFFSET	NORTH	EAST
31+260.893	200.00m RT	252095.3188	705088.1865
31+595.016	44.196 m LT	251872.3996	704729.2663
31+625.227	51.816 m LT	251866.4447	704698.6838
31+625.227	60.960 m LT	251857.3145	704698.1834
31+655.729	51.816 m LT	251868.1144	704668.2272
31+655.380	60.960 m LT	251858.9650	704668.0760
31+659.359	43.051 m RT	251963.0378	704669.7981
31+659.519	47.244 m RT	251967.2334	704669.8654
31+663.007	47.244 m RT	251967.4243	704666.3830
31+663.007	51.816 m LT	251868.5128	704660.9608
31+663.007	60.960 m LT	251859.3825	704660.4600
31+663.007	0.000 m	251920.2511	704663.7977
31+664.708	174.018 m RT	252094.0841	704671.9620
31+725.387	51.816 m LT	251874.4773	704595.1703
31+725.387	60.960 m LT	251865.4060	704594.0206
31+766.497	47.244 m RT	251978.5452	704569.1719
31+766.497	62.484 m RT	251993.5576	704571.7959
31+825.130	47.244 m RT	251989.9180	704514.8940
31+828.862	62.484 m RT	252005.5526	704515.1523

Prop. Curve MNL-3  
PI Sta. 32+114.054  
Δ = 54° 32' 26" (RT)  
T = 451.047 m [1479.81']  
R = 875.000 m [2870.73']  
L = 832.924 m [2732.68']  
E = 109.413 m [358.97']  
PC Sta. 31+663.007  
PT Sta. 32+495.931

PARCEL NO.	OWNER	TOTAL HOLDING	R.O.W. REQUIRED	PREVIOUSLY DEDICATED	REMAINDER	EASEMENTS		EASEMENT PURPOSE	PERMANENT TAX NUMBER	PROPERTY ACQUIRED BY
						TEMP	PERM			
8238008	Kathleen Gale Palen Title Report MA-2699	5.030 Ac. 24,838 sf	0.5702 Ac. 24,838 sf		4.460 Ac.		0.2135 Ac. 9,300 sf	Drainage	20-1-02-33-00-000-002.001	WD Bk. 4614 Pg. 1869 / PE Bk. 4614 Pg. 1860
8238009	Eric L. & Marola J. Haun Title Report MA-2697	31.088 Ac. 339,097 sf	7.7846 Ac. 339,097 sf	0.0852 Ac.	NORTH	PE-A	0.1399 Ac. 6,094 sf	Drainage	20-1-02-33-00-000-002	Bk. 4580 Pg. 2674
					SOUTH	PE-B	0.1669 Ac. 7,270 sf	Drainage	20-1-02-33-00-000-002.000	
					TE-A	0.2438 Ac. 10,620 sf	Detour Road			
					TE-B	0.3077 Ac. 13,403 sf	Detour Road			

PLOT DATE: DATE-TIME