

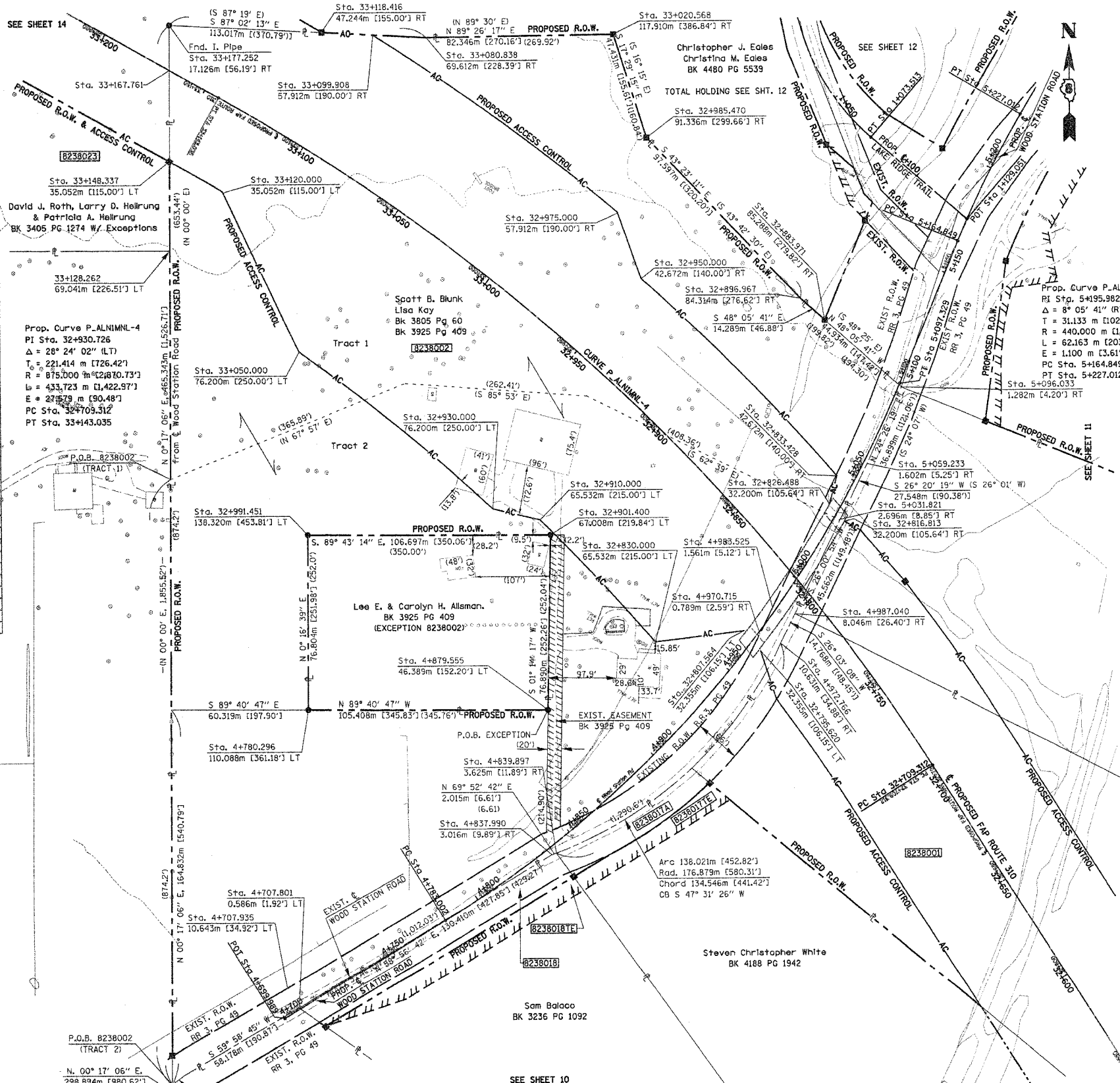
COORDINATES SHOWN HEREON ARE BASED ON SURVEY CONTROL DATA AS PROVIDED BY THE ILLINOIS DEPARTMENT OF TRANSPORTATION.

PART OF THE SE 1/4 OF SECTION 29, T6N, R9W, OF THE 3RD PM, MADISON COUNTY, ILLINOIS

BEARINGS SHOWN HEREON ARE BASED ON SURVEY CONTROL DATA AS PROVIDED BY THE ILLINOIS DEPARTMENT OF TRANSPORTATION.

FAP ROUTE	SECTION	COUNTY	TOTAL SHEETS	SHEET NO.
310	60-14	MADISON	452	137

COORDINATE TABLE				
STATION	OFFSET	NORTH	EAST	
4+699.989	0.000 m	252396.9640	703572.7079	
4+707.801	0.586 m LT	252401.4124	703578.9680	
4+707.935	10.643 m LT	252410.0756	703573.8570	
4+712.086	9.489 m RT	252395.0300	703587.8630	
4+713.260	12.252 m RT	252393.2800	703590.3020	
4+750.000	20.668 m RT	252405.1768	703626.0664	
4+780.296	110.088 m LT	252532.6400	703584.0180	
4+783.002	0.000 m	252439.9828	703643.5269	
4+835.939	12.902 m RT	252459.5725	703695.0497	
4+856.917	13.215 m RT	252459.9342	703696.0374	
4+837.990	3.016 m RT	252468.6855	703690.6864	
4+839.139	23.967 m RT	252452.8229	703704.4237	
4+835.411	16.476 m RT	252458.9192	703700.0618	
4+839.592	14.031 m RT	252460.9090	703698.6380	
4+839.897	3.625 m RT	252469.3786	703692.5781	
4+859.045	19.339 m RT	252469.4593	703717.8867	
4+879.555	46.389 m LT	252532.0510	703689.4244	
4+907.655	16.010 m RT	252506.0810	703752.3390	
4+908.392	26.110 m RT	252499.5674	703760.0970	
4+909.205	37.706 m RT	252492.0905	703769.0019	
4+970.715	0.789 m RT	252564.5127	703782.7105	
4+972.766	10.631 m RT	252560.2350	703791.8340	
4+983.525	1.561 m LT	252576.2043	703788.4259	
4+987.040	8.046 m RT	252573.5026	703798.2999	
32+553.605	39.624 m LT	252353.6561	703907.9444	
32+562.551	24.973 m LT	252369.0499	703915.5416	
32+578.395	0.000 m	252395.7915	703928.1742	
32+608.568	39.624 m LT	252400.1036	703878.5571	
32+773.656	39.678 m LT	252535.8648	703789.9255	
32+807.564	32.355 m LT	252566.0780	703775.8670	
32+810.765	0.000 m	252588.8254	703799.0896	
32+830.000	65.532 m LT	252561.3272	703736.3957	
32+833.428	42.672 m RT	252633.9441	703817.0845	
32+893.971	85.288 m RT	252702.7408	703812.8296	
32+896.967	84.314 m RT	252712.2843	703801.6991	
32+901.400	67.008 m LT	252608.9230	703691.0860	
32+910.000	65.532 m LT	252615.8723	703686.4875	
32+930.000	76.200 m LT	252620.6243	703665.8456	
32+950.000	42.672 m RT	252721.4291	703731.8146	
32+975.000	57.912 m RT	252750.2905	703721.9108	
32+985.470	91.336 m RT	252783.2118	703734.6543	
32+991.451	138.320 m LT	252609.4431	703594.3894	
33+020.568	117.910 m RT	252828.4507	703720.4014	
33+050.000	76.200 m LT	252689.9548	703581.1366	
33+080.838	69.612 m RT	252827.6432	703638.0596	
33+099.908	57.912 m RT	252828.8615	703614.5232	
33+118.416	47.244 m RT	252830.0159	703692.2205	
33+120.000	35.052 m LT	252760.1726	703548.6660	
33+148.337	35.052 m LT	252773.8822	703524.8979	
33+167.761	0.000 m	252813.9058	703525.0984	
33+177.252	17.126 m RT	252833.4854	703525.1937	



LEGEND

- AC - PROPOSED ACCESS CONTROL
- EXISTING CENTERLINE
- EXISTING RIGHT OF WAY LINE
- EXISTING EASEMENT LINE
- PROPOSED CENTERLINE
- PROPOSED RIGHT OF WAY LINE
- PROPOSED TEMPORARY EASEMENT LINE
- PROPOSED PERMANENT EASEMENT LINE
- SECTION LINE
- QUARTER SECTION LINE
- QUARTER QUARTER SECTION LINE
- PROPERTY (DEED) LINE
- APPARENT PROPERTY LINE
- MEASURED DIMENSION
- COMPUTED DIMENSION
- ENGLISH EQUIVALENT TO METRIC DIM.
- RECORDED DIMENSION
- FOUND IRON PIPE OR IRON ROD
- SET 5/8 INCH IRON ROD
- PERMANENT SURVEY MONUMENT, I.D.O.T. STD. 2135
- (TO BE SET BY OTHERS)
- CUT CROSS FOUND OR SET
- SAME OWNERSHIP

STAKING OF PROPOSED RIGHT OF WAY, SET 5/8 INCH METAL ROD WITH DIVISION OF HIGHWAY SURVEY MARKER TO MONUMENT THE POSITION SHOWN, IDENTIFIED BY INSCRIPTION DATA AND SURVEYORS REGISTRATION NUMBER.

STAKING OF PROPOSED RIGHT OF WAY IN CULTIVATED AREAS, SET 5/8 INCH METAL ROD WITH DIVISION OF HIGHWAY SURVEY MARKER 20 INCHES BELOW GROUND SURFACE TO MONUMENT THE POSITION SHOWN, IDENTIFIED BY INSCRIPTION DATA AND SURVEYORS REGISTRATION NUMBER.

STATE OF ILLINOIS)
COUNTY OF) SS

THIS IS TO CERTIFY THAT I, THOMAS M. DRONE, AN ILLINOIS PROFESSIONAL LAND SURVEYOR, HAS SURVEYED THE PLAT OF HIGHWAYS SHOWN HEREON IN SECTION 29, TOWNSHIP 6 NORTH, RANGE 9 WEST, OF THE THIRD PRINCIPAL MERIDIAN, MADISON COUNTY, THAT THE SURVEY IS TRUE AND COMPLETE AS SHOWN TO THE BEST OF MY KNOWLEDGE AND BELIEF, THAT THE PLAT CORRECTLY REPRESENTS SAID SURVEY, THAT ALL MONUMENTS FOUND AND ESTABLISHED ARE OF PERMANENT QUALITY AND OCCUPY THE POSITIONS SHOWN THEREON AND THAT THE MONUMENTS ARE SUFFICIENT TO ENABLE THE SURVEY TO BE RETRACED. MADE FOR THE DEPARTMENT OF TRANSPORTATION, STATE OF ILLINOIS.

DATED April 12, 2004

Thomas M. Drone
THOMAS M. DRONE, PLS #2273

THOMAS M. DRONE
2273 PROFESSIONAL LAND SURVEYOR STATE OF ILLINOIS
SPRINGFIELD, ILL.

HURST-ROSCHKE ENGINEERS, INC.
2657 W. LAWRENCE - SPRINGFIELD, ILLINOIS 62704
217-787-1199

ILLINOIS DEPARTMENT OF TRANSPORTATION
PLAT OF HIGHWAYS
FAP ROUTE 310 (IL 255)
SECTION 60-14
MADISON COUNTY
JOB NO. R-98-038-92
STATION 32+600 TO STATION 33+200

0 m 20 m 40 m 60 m
SCALE 1:1,000 SHEET 13 OF 38

ILLINOIS DEPARTMENT OF TRANSPORTATION
DIVISION OF HIGHWAYS/DISTRICT 8
1102 EASTPORT PLAZA DRIVE
COLLINGSVILLE, ILLINOIS 62234-6198

PARCEL NO.	OWNER	TOTAL HOLDING	R.O.W. REQUIRED	PREVIOUSLY DEDICATED	REMAINDER	EASEMENTS		EASEMENT PURPOSE	PERMANENT TAX NUMBER	PROPERTY ACQUIRED BY
						TEMP	PERM			
8238002	Scott B. Blunk & Lisa Kay Title Report MA-2719	23.0066 Ac	23.0066 Ac	1.1349 Ac 1,002,167 sf	49,436 sf	0			20-1-02-29-00-000-009.001	BK 4475 PG 826