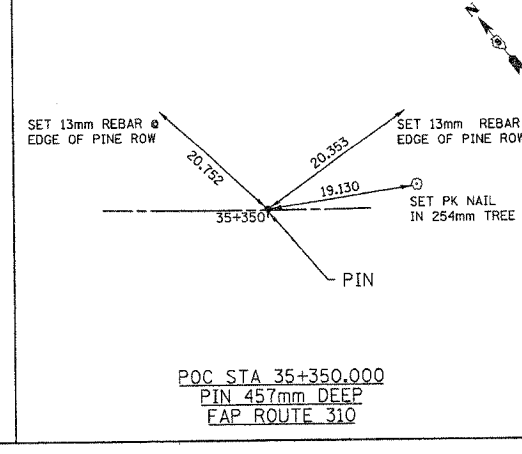
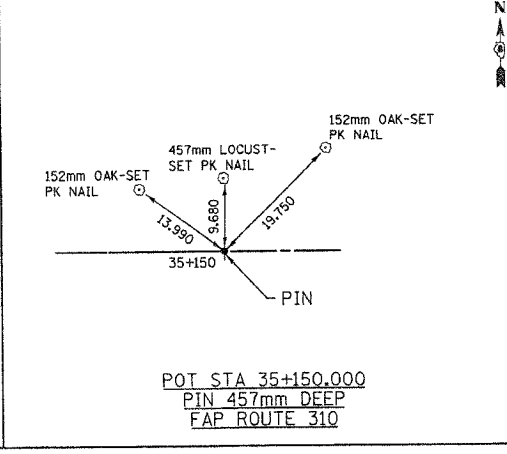
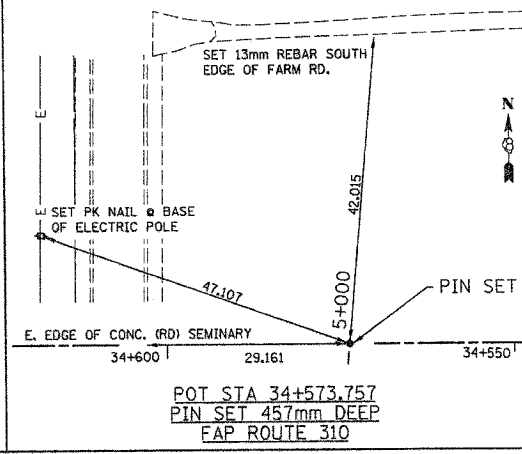
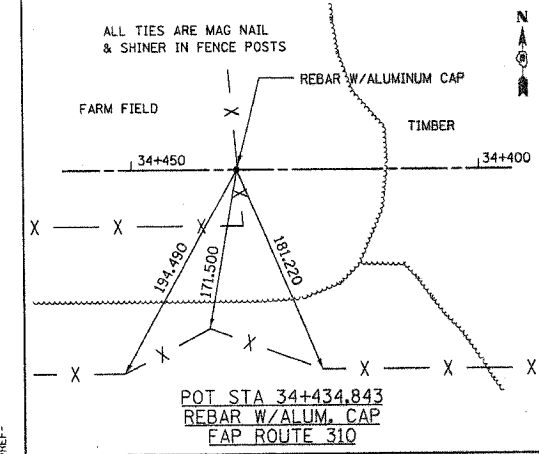
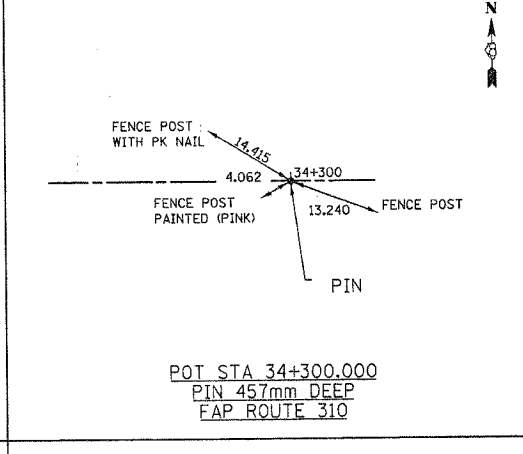
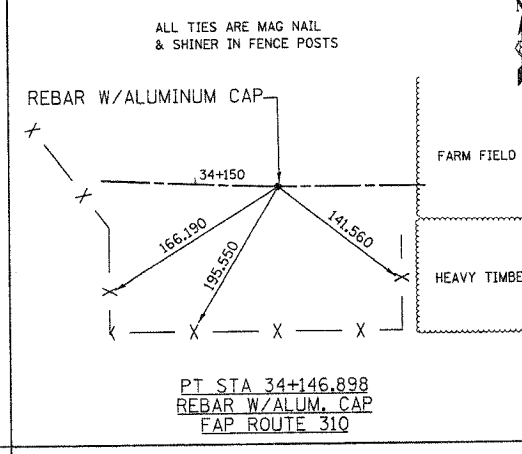
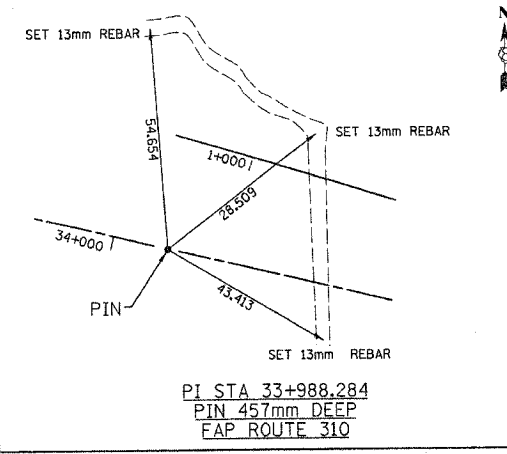
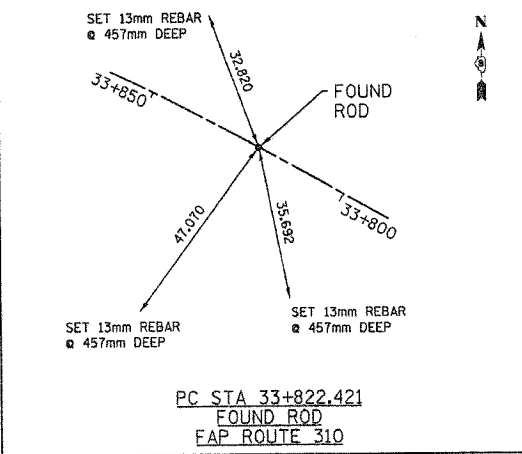
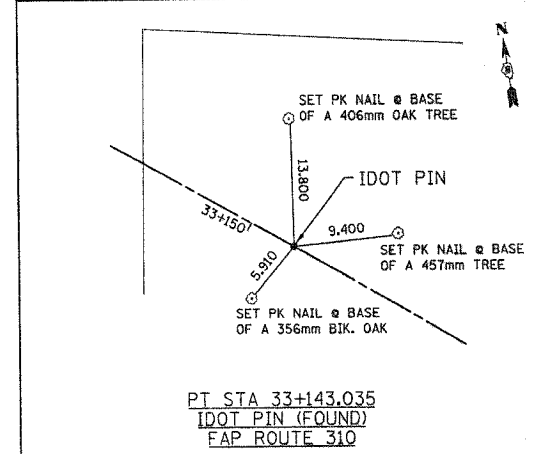
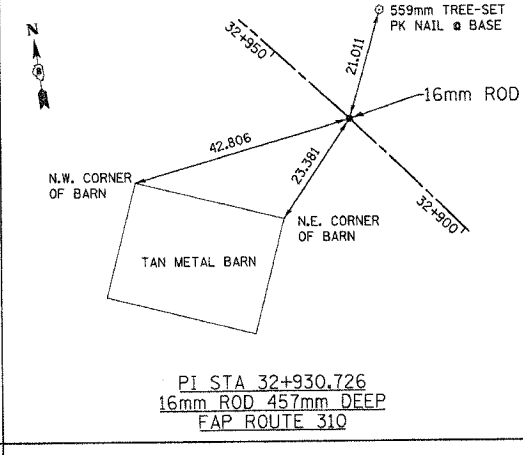
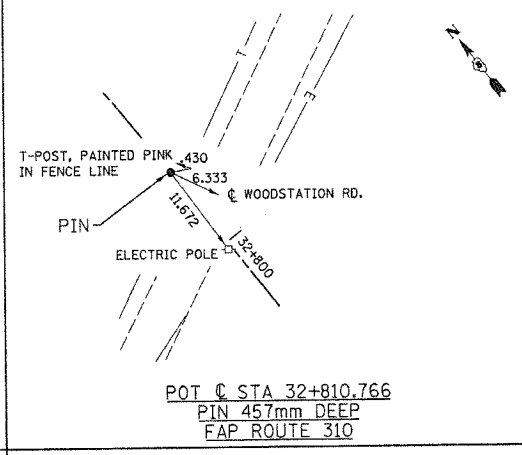
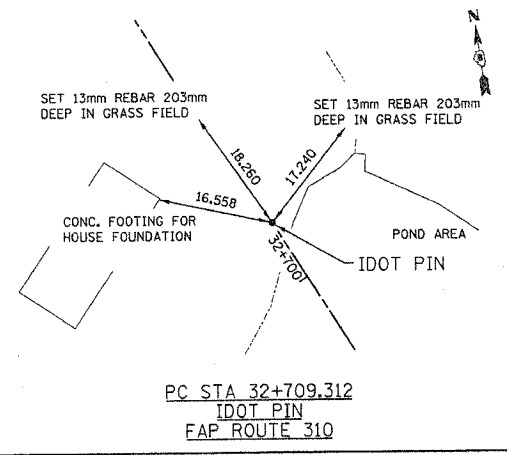
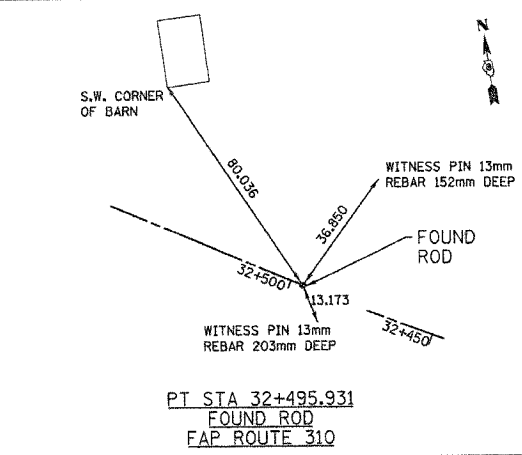
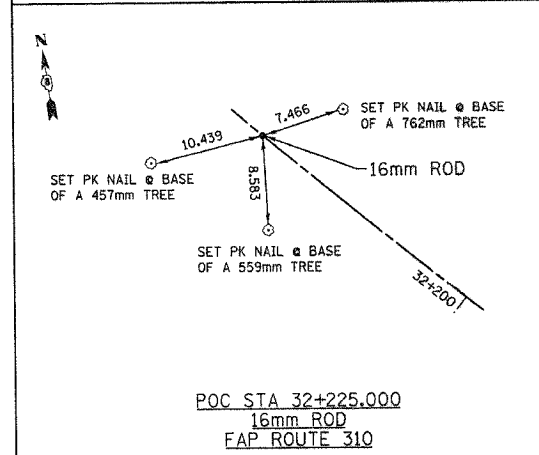
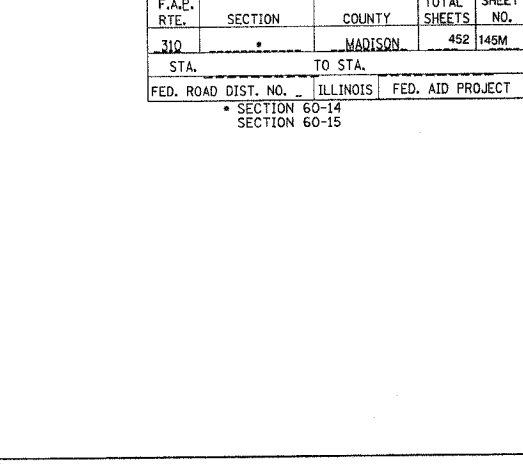
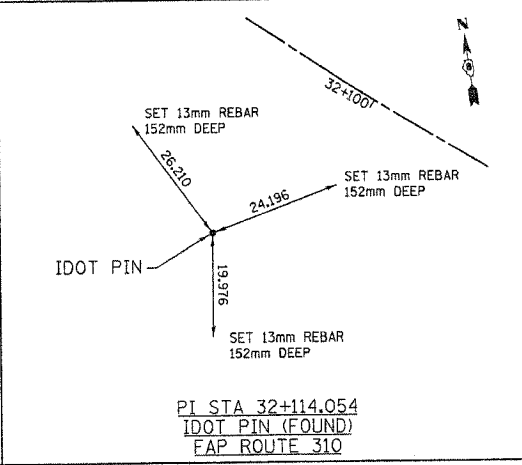
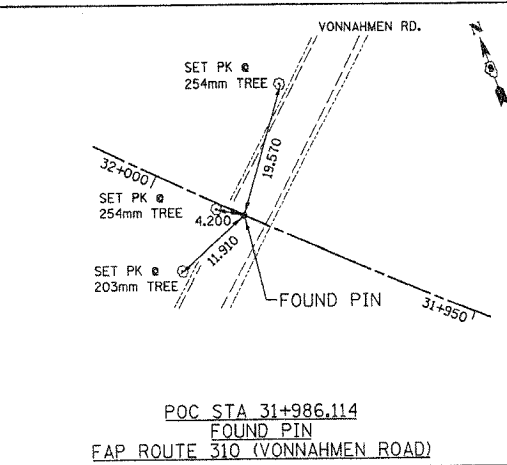
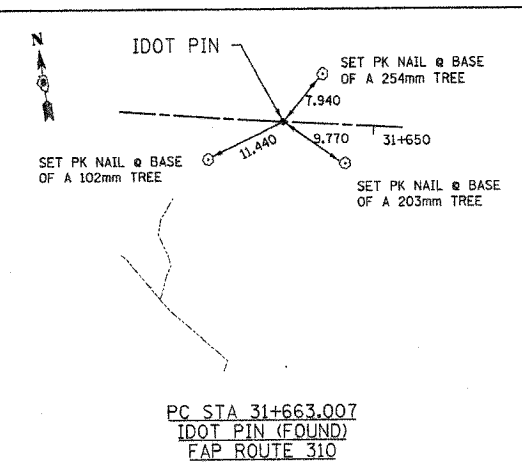
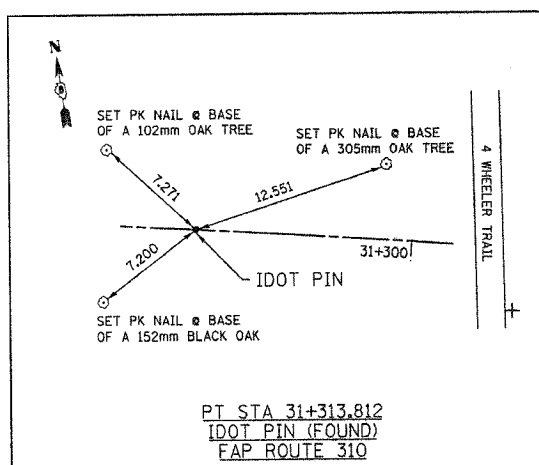


F.A.P. RTE.	SECTION	COUNTY	TOTAL SHEETS	SHEET NO.
310		MADISON	452	145M
STA. 310		TO STA.		
FED. ROAD DIST. NO. 111		ILLINOIS		FED. AID PROJECT
SECTION 60-14 SECTION 60-15				



HURST-ROSCH ENGINEERS, INC.
2657 W. LAWRENCE - SPRINGFIELD, ILLINOIS 62704
217-787-1999

ILLINOIS DEPARTMENT OF TRANSPORTATION

TIE POINTS

FAP ROUTE 310 (IL 255)
SECTION 60-14 / 60-15
MADISON COUNTY
JOB NO. R-98-038/039-92

SHEET 34 OF 38

ILLINOIS DEPARTMENT OF TRANSPORTATION
DIVISION OF HIGHWAYS-DISTRICT 8
1102 EASTPORT PLAZA DRIVE
COLLINGSVILLE, ILLINOIS 62234-6198

PLOT DATE: DATE-TIME