

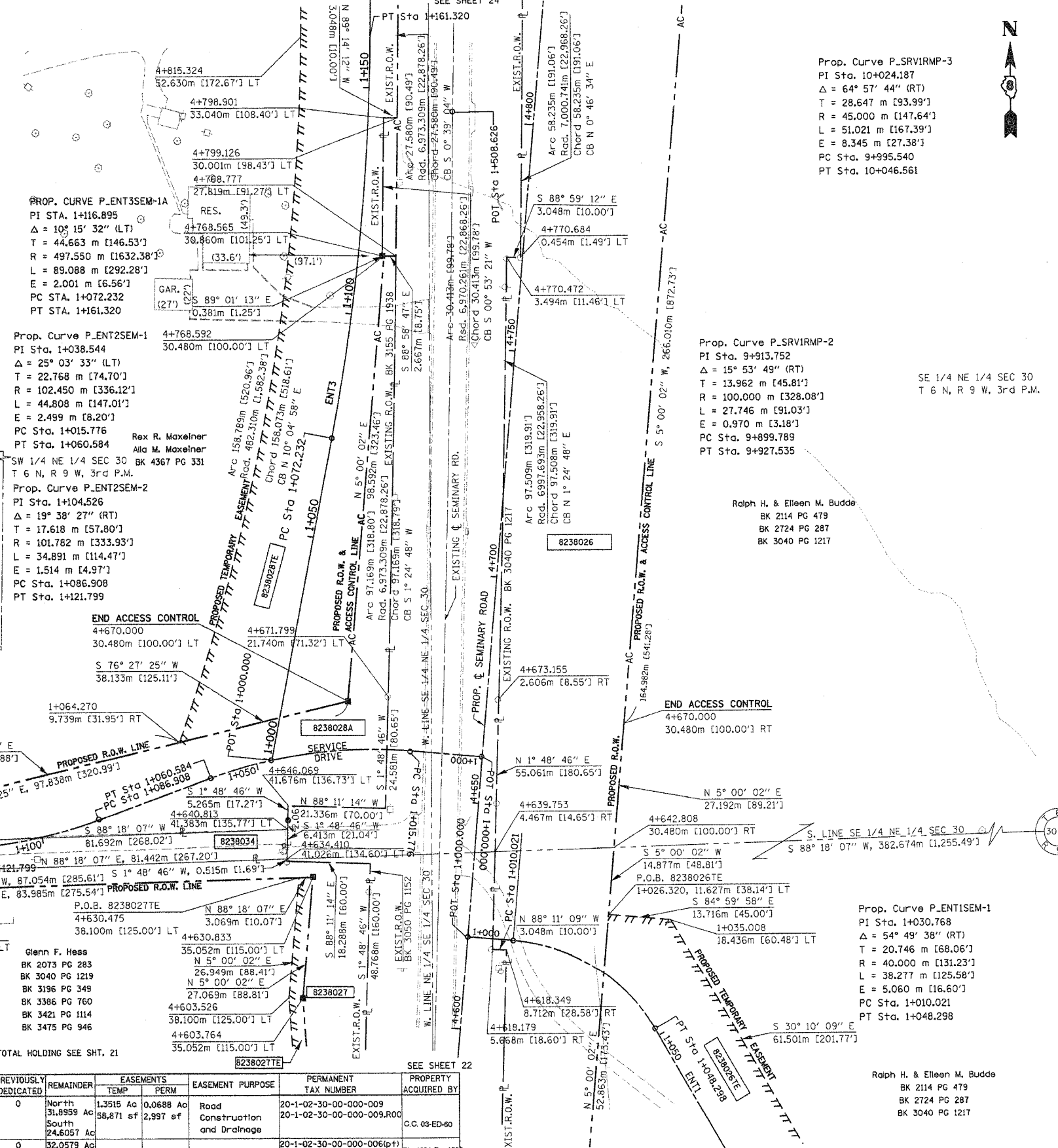
COORDINATES SHOWN HEREON ARE BASED ON SURVEY CONTROL DATA AS PROVIDED BY THE ILLINOIS DEPARTMENT OF TRANSPORTATION.

PART OF THE E 1/2 OF SECTION 30, T6N, R9W, OF THE 3RD PM, MADISON COUNTY, ILLINOIS

BEARINGS SHOWN HEREON ARE BASED ON SURVEY CONTROL DATA AS PROVIDED BY THE ILLINOIS DEPARTMENT OF TRANSPORTATION.

FAP ROUTE	SECTION	COUNTY	TOTAL SHEETS	SHEET NO.
310	60-14, 60-15	MADISON	452	145B

COORDINATE TABLE				
STATION	OFFSET	NORTH	EAST	
4+603.526	38.100 m LT	252823.5404	702144.1530	
4+603.764	35.052 m LT	252823.5109	702147.2101	
4+618.179	5.668 m RT	252834.3222	702189.0321	
4+618.349	8.712 m RT	252834.2257	702192.0786	
4+630.475	38.100 m LT	252850.3865	702146.5020	
4+630.833	35.052 m LT	252850.4774	702149.5696	
4+639.753	4.467 m RT	252855.9189	702189.7155	
4+642.808	30.480 m RT	252856.6950	702215.8960	
4+670.000	30.480 m LT	252889.0967	702157.5381	
4+671.799	21.740 m LT	252890.1270	702166.4020	
4+673.155	2.606 m RT	252889.3557	702190.7737	
4+768.565	30.860 m LT	252987.3200	702185.7510	
4+768.592	30.480 m LT	252987.3135	702166.1319	
4+768.777	27.819 m LT	252987.2660	702168.7990	
4+770.472	3.494 m LT	252986.8344	702193.1789	
4+770.684	0.454 m LT	252986.7805	702196.2264	
4+798.901	33.040 m LT	253017.7300	702166.2230	
4+799.126	30.000 m LT	253017.6890	702169.2710	
4+815.324	52.630 m LT	253035.7982	702148.1393	
1+000.000	0.000 m	252837.1613	702183.5896	ENT1
1+010.021	0.000 m	252836.2873	702193.5728	ENT1
1+048.298	0.000 m	252816.5419	702224.6659	ENT1
1+000.000	0.000 m	252876.7327	702187.0528	ENT2
1+015.776	0.000 m	252878.1079	702171.3368	ENT2
1+060.584	0.000 m	252872.2833	702127.2681	ENT2
1+121.799	0.000 m	252857.0835	702088.3737	ENT2
1+000.000	0.000 m	252876.1819	702140.7462	ENT3
1+072.232	0.000 m	252947.1085	702154.4175	ENT3
1+161.320	0.000 m	253035.6250	702163.3783	ENT3
1+026.320	11.626 m LT	252841.8743	702214.5992	
1+035.008	18.436 m LT	252840.6788	702228.2630	
1+064.270	9.7390 m RT	252880.1669	702120.4657	
1+127.684	1.509 m RT	252858.5508	702062.4767	
1+127.684	4.893 m LT	252852.1485	702062.5232	
1+127.684	9.144 m RT	252866.1855	702062.4211	
1+127.684	9.144 m LT	252847.8980	702062.5541	



Prop. Curve P.SRVIRMP-3
 PI Sta. 10+024.187
 $\Delta = 64^\circ 57' 44''$ (RT)
 $T = 28.647$ m [93.99']
 $R = 45.000$ m [147.64']
 $L = 51.021$ m [167.39']
 $E = 8.345$ m [27.38']
 PC Sta. 9+995.540
 PT Sta. 10+046.561

Prop. Curve P.SRVIRMP-2
 PI Sta. 9+913.752
 $\Delta = 15^\circ 53' 49''$ (RT)
 $T = 13.962$ m [45.81']
 $R = 100.000$ m [328.08']
 $L = 27.746$ m [91.03']
 $E = 0.970$ m [3.18']
 PC Sta. 9+899.789
 PT Sta. 9+927.535

Prop. Curve P.ENT3SEM-1A
 PI Sta. 1+116.895
 $\Delta = 10^\circ 15' 32''$ (LT)
 $T = 44.663$ m [146.53']
 $R = 497.550$ m [1632.38']
 $L = 89.088$ m [292.28']
 $E = 2.001$ m [6.56']
 PC Sta. 1+072.232
 PT Sta. 1+161.320

Prop. Curve P.ENT2SEM-1
 PI Sta. 1+038.544
 $\Delta = 25^\circ 03' 33''$ (LT)
 $T = 22.768$ m [74.70']
 $R = 102.450$ m [336.12']
 $L = 44.808$ m [147.01']
 $E = 2.499$ m [8.20']
 PC Sta. 1+015.776
 PT Sta. 1+060.584

Prop. Curve P.ENT2SEM-2
 PI Sta. 1+104.526
 $\Delta = 19^\circ 38' 27''$ (RT)
 $T = 17.618$ m [57.80']
 $R = 101.782$ m [333.93']
 $L = 34.891$ m [114.47']
 $E = 1.514$ m [4.97']
 PC Sta. 1+086.508
 PT Sta. 1+121.799

Prop. Curve P.ENTISEM-1
 PI Sta. 1+030.768
 $\Delta = 54^\circ 49' 38''$ (RT)
 $T = 20.746$ m [68.06']
 $R = 40.000$ m [131.23']
 $L = 38.277$ m [125.58']
 $E = 5.060$ m [16.60']
 PC Sta. 1+010.021
 PT Sta. 1+048.298



LEGEND

- ACCESS CONTROL LINE
- EXISTING CENTERLINE
- EXISTING RIGHT OF WAY LINE
- EXISTING EASEMENT LINE
- PROPOSED CENTERLINE
- PROPOSED RIGHT OF WAY LINE
- PROPOSED TEMPORARY EASEMENT LINE
- PROPOSED PERMANENT EASEMENT LINE
- SECTION LINE
- QUARTER SECTION LINE
- QUARTER QUARTER SECTION LINE
- PROPERTY (DEED) LINE
- APPARENT PROPERTY LINE
- MEASURED DIMENSION
- COMPUTED DIMENSION
- ENGLISH EQUIVALENT TO METRIC DIM.
- RECORDED DIMENSION
- FOUND IRON PIPE OR IRON ROD
- SET 5/8 INCH IRON ROD
- PERMANENT SURVEY MONUMENT, I.D.O.T. STD. 2135
- (TO BE SET BY OTHERS)
- CUT CROSS FOUND OR SET
- SAME OWNERSHIP

- STAKING OF PROPOSED RIGHT OF WAY. SET 5/8 INCH METAL ROD WITH DIVISION OF HIGHWAY SURVEY MARKER TO MONUMENT THE POSITION SHOWN, IDENTIFIED BY INSCRIPTION DATA AND SURVEYORS REGISTRATION NUMBER.
- STAKING OF PROPOSED RIGHT OF WAY IN CULTIVATED AREAS. SET 5/8 INCH METAL ROD WITH DIVISION OF HIGHWAY SURVEY MARKER 20 INCHES BELOW GROUND SURFACE TO MONUMENT THE POSITION SHOWN, IDENTIFIED BY INSCRIPTION DATA AND SURVEYORS REGISTRATION NUMBER.

STATE OF ILLINOIS)
) SS
 COUNTY OF)

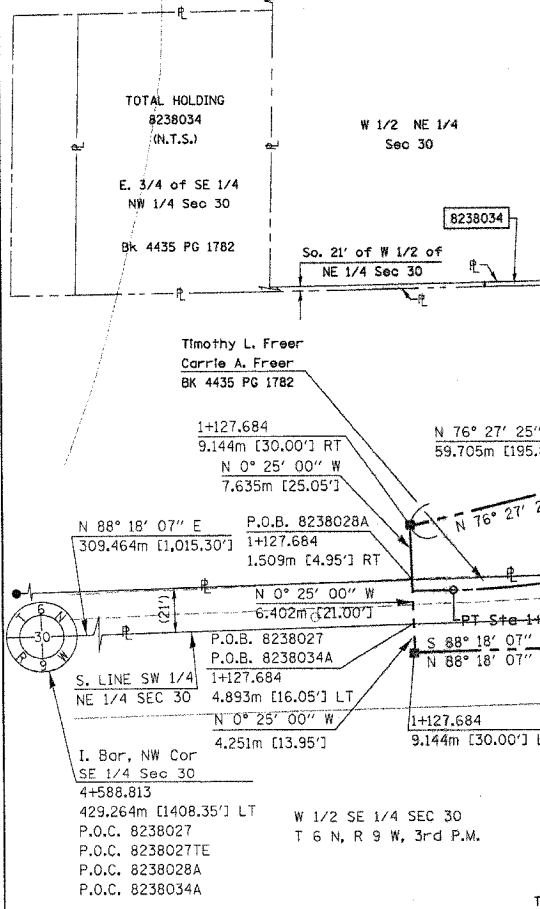
THIS IS TO CERTIFY THAT I, THOMAS M. DRONE, AN ILLINOIS PROFESSIONAL LAND SURVEYOR, HAS SURVEYED THE PLAT OF HIGHWAYS SHOWN HEREON IN SECTION 30, TOWNSHIP 6 NORTH, RANGE 9 WEST, OF THE THIRD PRINCIPAL MERIDIAN, MADISON COUNTY, THAT THE SURVEY IS TRUE AND COMPLETE AS SHOWN TO THE BEST OF MY KNOWLEDGE AND BELIEF, THAT THE PLAT CORRECTLY REPRESENTS SAID SURVEY, THAT ALL MONUMENTS FOUND AND ESTABLISHED ARE OF PERMANENT QUALITY AND OCCUPY THE POSITIONS SHOWN THEREON AND THAT THE MONUMENTS ARE SUFFICIENT TO ENABLE THE SURVEY TO BE RETRACED. MADE FOR THE DEPARTMENT OF TRANSPORTATION, STATE OF ILLINOIS.

DATED April 12, 2004
 Thomas M. Drone
 THOMAS M. DRONE, PLS #2273



I, Pin NE Cor SE 1/4 Sec 30
 T 6 N, R 9 W, 3rd P.M.
 34+192.018
 347.147m [1138.93'] LT
 P.O.C. 8238026TE
 HURST-ROSCH ENGINEERS, INC.
 2657 W. LAWRENCE - SPRINGFIELD, ILLINOIS 62704
 217-787-1199

ILLINOIS DEPARTMENT OF TRANSPORTATION
PLAT OF HIGHWAYS
 FAP ROUTE 310 (IL 255)
 SECTION 60-14
 MADISON COUNTY
 JOB NO. R-98-038-92
 STATION 4+600 TO STATION 4+800
 SCALE 1:500 SHEET 23 OF 38
 ILLINOIS DEPARTMENT OF TRANSPORTATION
 DIVISION OF HIGHWAYS/DISTRICT 8
 1102 EASTPORT PLAZA DRIVE
 COLLINSVILLE, ILLINOIS 62234-6198



PARCEL NO.	OWNER	TOTAL HOLDING	R.O.W. REQUIRED	PREVIOUSLY DEDICATED	REMAINDER	EASEMENTS	EASEMENT PURPOSE	PERMANENT TAX NUMBER	PROPERTY ACQUIRED BY
8238028	Rex R. Maxelner Alia M. Maxelner Title Report MA-2687	73.74 Ac	A=0.5908 Ac 25.735 sf B=16.6476 Ac 725.169 sf	0	North 31.8959 Ac South 24.6057 Ac	1.3515 Ac 0.0688 Ac 58.871 sf 2,997 sf	Road Construction and Drainage	20-1-02-30-00-000-009 20-1-02-30-00-000-009.R00	C.C. 03-ED-80
8238034	Timothy L. Freer & Carrie A. Freer Title Report MA-2674	32.1869 Ac	0.1290 Ac 5,619 sf	0	32.0579 Ac			20-1-02-30-00-000-006(p) 20-1-02-30-00-000-006.R00	BK 4821 Pg. 128