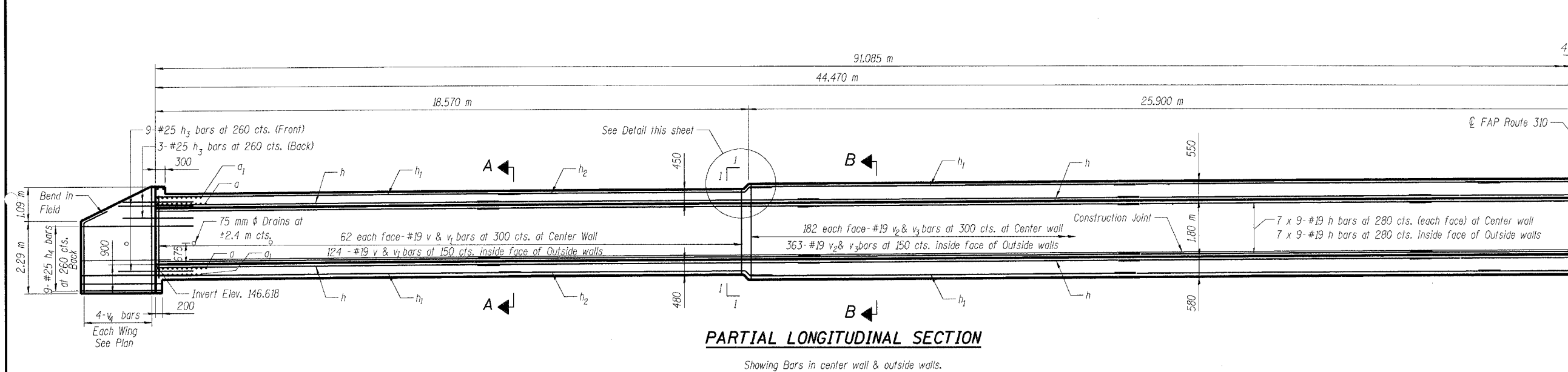


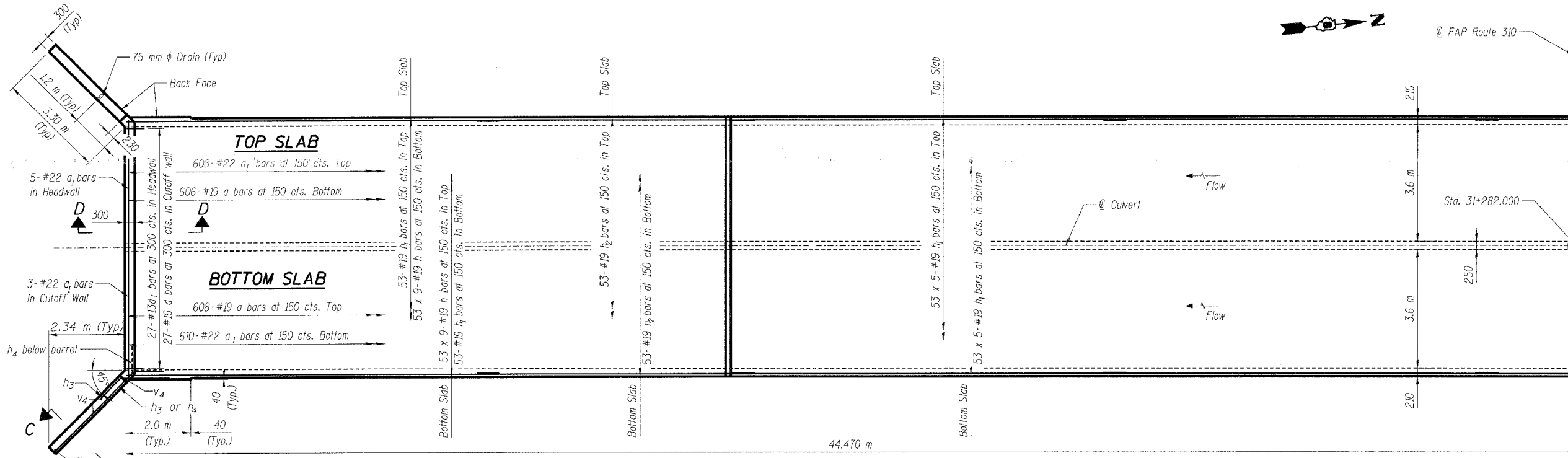
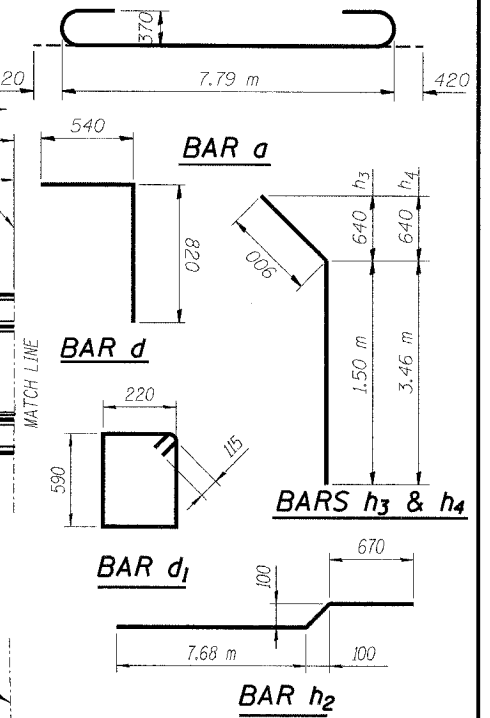
STATE OF ILLINOIS  
DEPARTMENT OF TRANSPORTATION

FAP ROUTE	SECTION	COUNTY	TOTAL SHEETS	SHEET NO.
310	60-14-1B	MADISON	469	155
STA. 31+282.000		TO STA.		
FED. ROAD DIST. NO. 8		ILLINOIS	FED. AID PROJECT	

Sheet 2 of 6



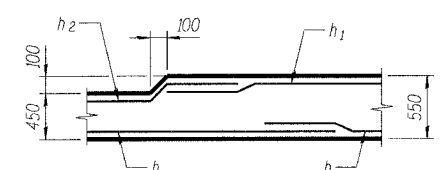
**PARTIAL LONGITUDINAL SECTION**  
Showing Bars in center wall & outside walls.



**PARTIAL PLAN**  
Showing Reinforcing in Slabs

**BILL OF MATERIAL**

Bar	No.	Size	Length (m)	Shape
a	1216	#19	8.63	U
a1	1232	#22	7.79	—
d	54	#16	1.36	L
h	1206	#19	10.70	—
h1	742	#19	11.40	—
h2	212	#19	8.49	—
h3	48	#25	2.40	—
h4	36	#25	4.36	—
v	734	#19	2.05	—
v1	734	#19	1.15	—
v2	1090	#19	2.15	—
v3	1090	#19	1.25	—
v4	16	#16	3.30	—
Concrete Box Culverts			m <sup>3</sup>	876.7
Reinforcement Bars			kg	119143



**DETAIL**  
Top Slab shown  
Bottom Slab similar

**MIN. BAR LAP**


#19 Bars 670  
#22 Bars 910

**Notes:**

1. A distance of half the length of the wingwall, but not less than 2 m of the barrel, shall be poured monolithically with the wingwalls.
2. Bars indicated thus 12x4-#15 etc., indicates 12 lines of bars with 4 lengths per line.
3. Work this sheet with Sheets 3 & 4 of 6.
4. For Section A-A, B-B, C-C and D-D, see Sheet 4 of 6.

DESIGNED	B.W.B.
CHECKED	M.A.A.
DRAWN	R.M.R.
CHECKED	B.S.C.

PLANS PREPARED BY:

**WOOLPERT**  **WOOLPERT LLP**  
4315 North Illinois Street, Suite 1 C  
Belleville, IL  
62226-1045  
618.277.7004  
FAX: 618.277.6114

STATE OF ILLINOIS  
DEPARTMENT OF TRANSPORTATION  
FAP 310 OVER TRIBUTARY OF WEST FORK WOOD RIVER  
SECTION 60-14-1B  
MADISON COUNTY  
STATION 31+282  
STRUCTURE No. 060-2044  
PARTIAL CULVERT PLAN AND SECTION