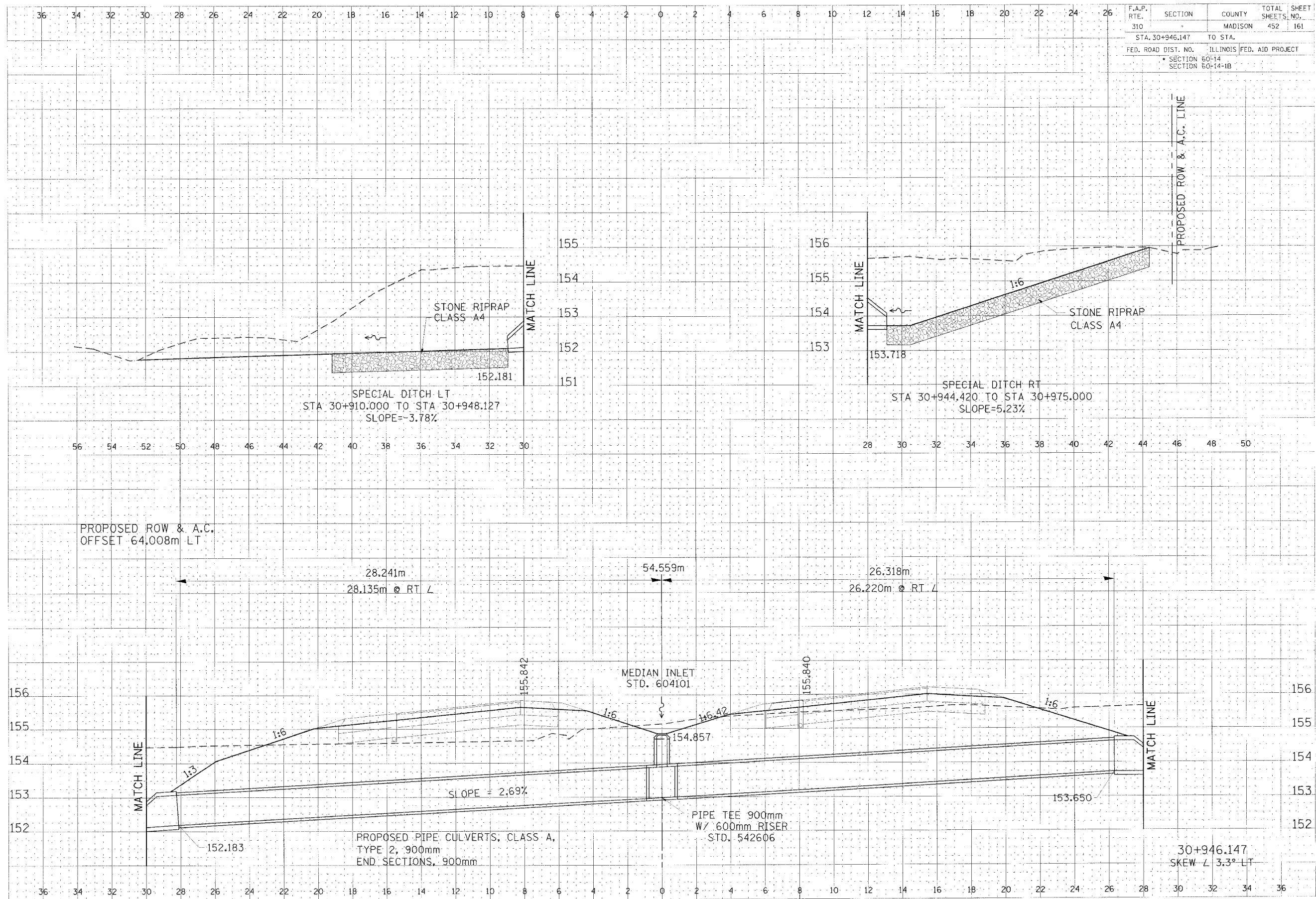


F.A.P. RTE.	SECTION	COUNTY	TOTAL SHEETS, NO.
310		MADISON	452 161
STA. 30+946.147		TO STA.	
FED. ROAD DIST. NO.	ILLINOIS FED. AID PROJECT		
	SECTION 60-14		
	SECTION 60-14-1B		

DATE	BY	CHKD.
DATE	BY	CHKD.

DATE	BY	CHKD.
DATE	BY	CHKD.



CULVERT PROFILE, FAP ROUTE 310, STA 30+946.147

DATE: 02/16/2016 BY: JLR