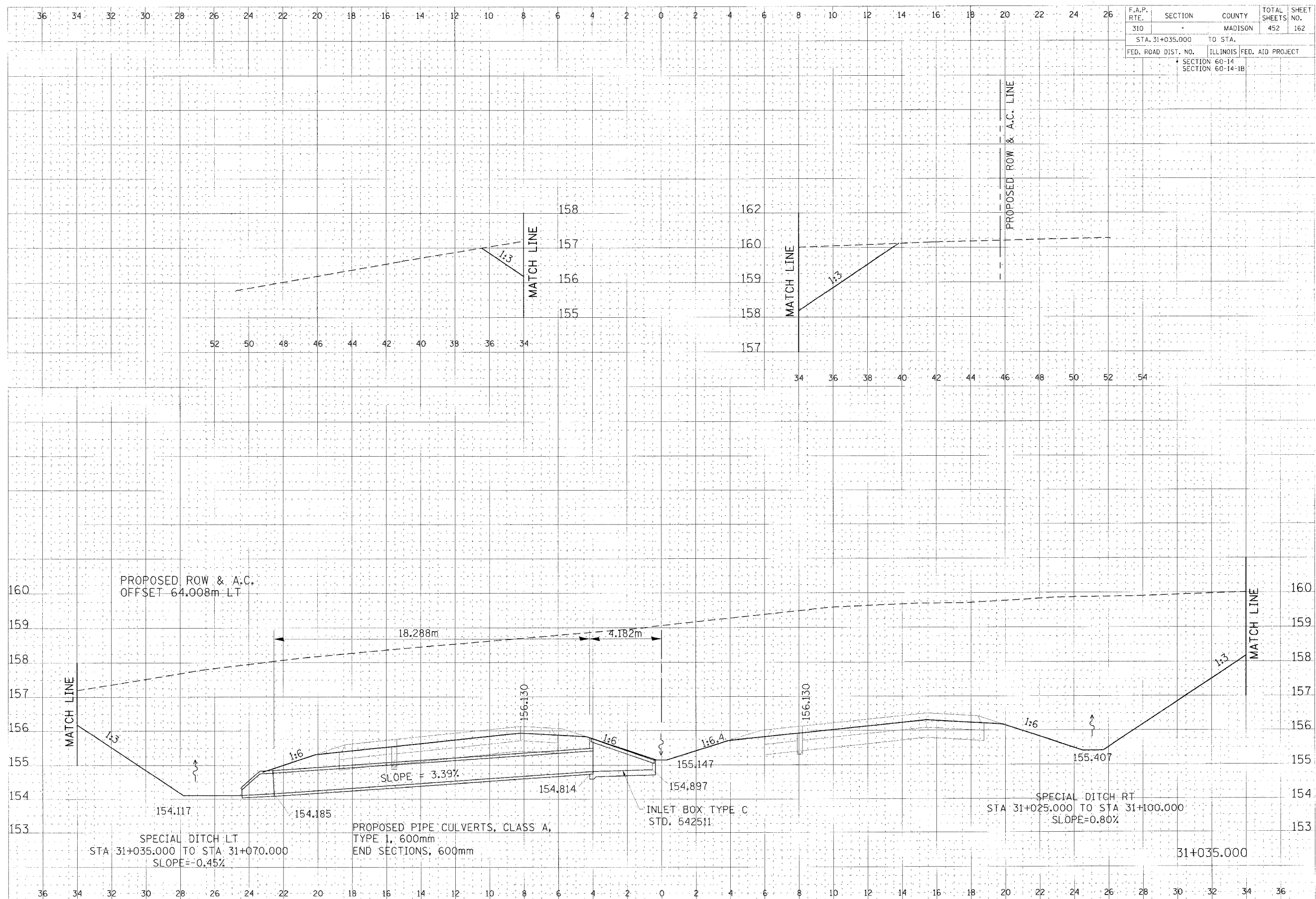


F.A.P. RTE.	SECTION	COUNTY	TOTAL SHEETS	SHEET NO.
310		MADISON	452	162
STA. 31+035.000		TO STA.		
FED. ROAD DIST. NO.	ILLINOIS FED. AID PROJECT			
	SECTION 60-14			
	SECTION 60-14-1B			



CULVERT PROFILE, FAP ROUTE 310, STA 31+035.000

DATE: 6/1/06
 DRAWN BY: J. B. BROWN
 CHECKED BY: J. B. BROWN
 PROJECT NO.: 06-14-1B
 SHEET NO.: 162

DATE: 6/1/06
 DRAWN BY: J. B. BROWN
 CHECKED BY: J. B. BROWN
 PROJECT NO.: 06-14-1B
 SHEET NO.: 162