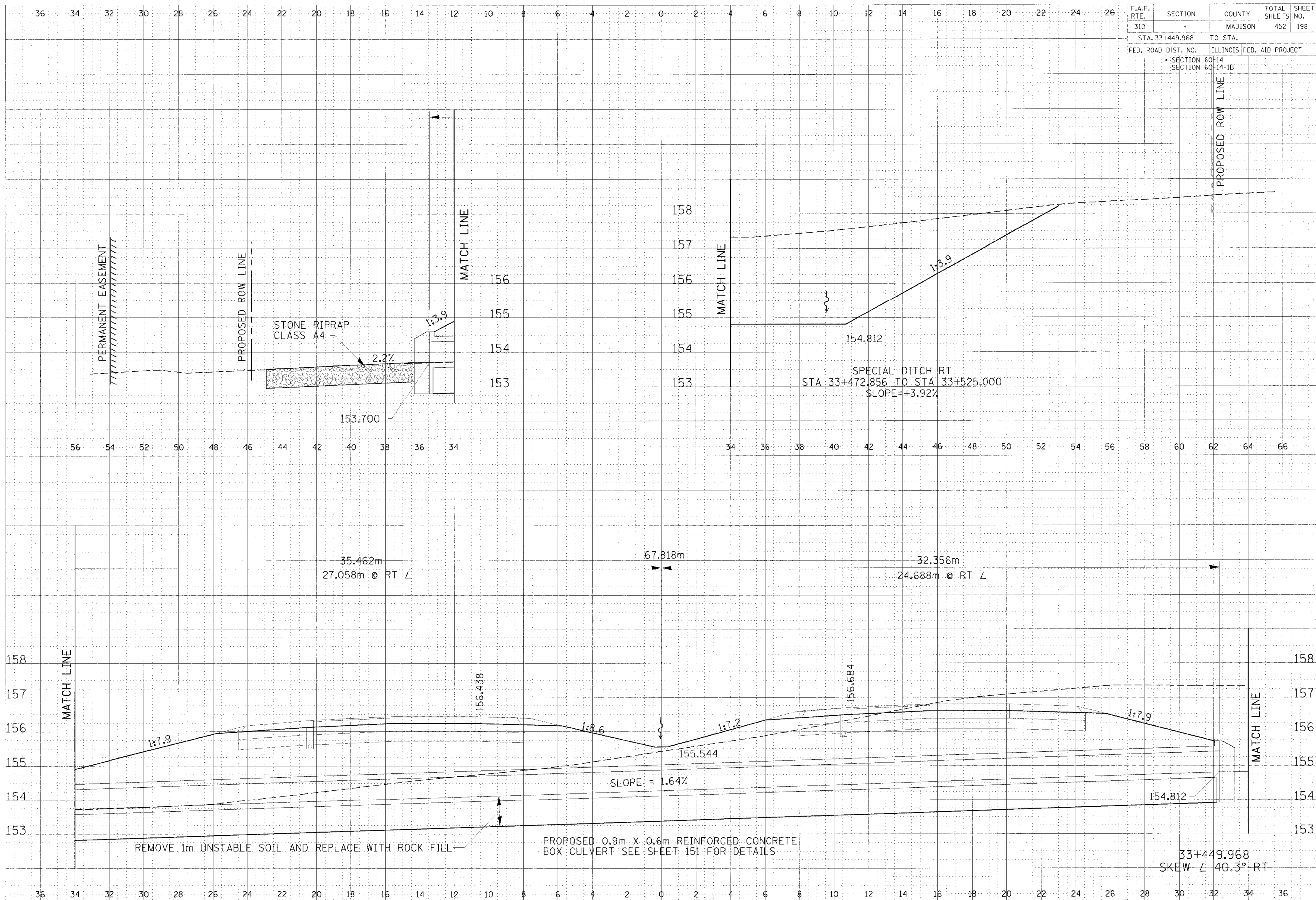


F.A.P. RTE.	SECTION	COUNTY	TOTAL SHEETS	SHEET NO.
310		MADISON	452	198
STA. 33+449.968		TO STA.		
FED. ROAD DIST. NO.		ILLINOIS FED. AID PROJECT		
		SECTION 60-14 SECTION 60-14-1B		



CULVERT PROFILE, FAP ROUTE 310, STA 33+449.968

DATE: 10/17/2005 10:13:46 AM
 USER: JEFFREY W. HARRIS