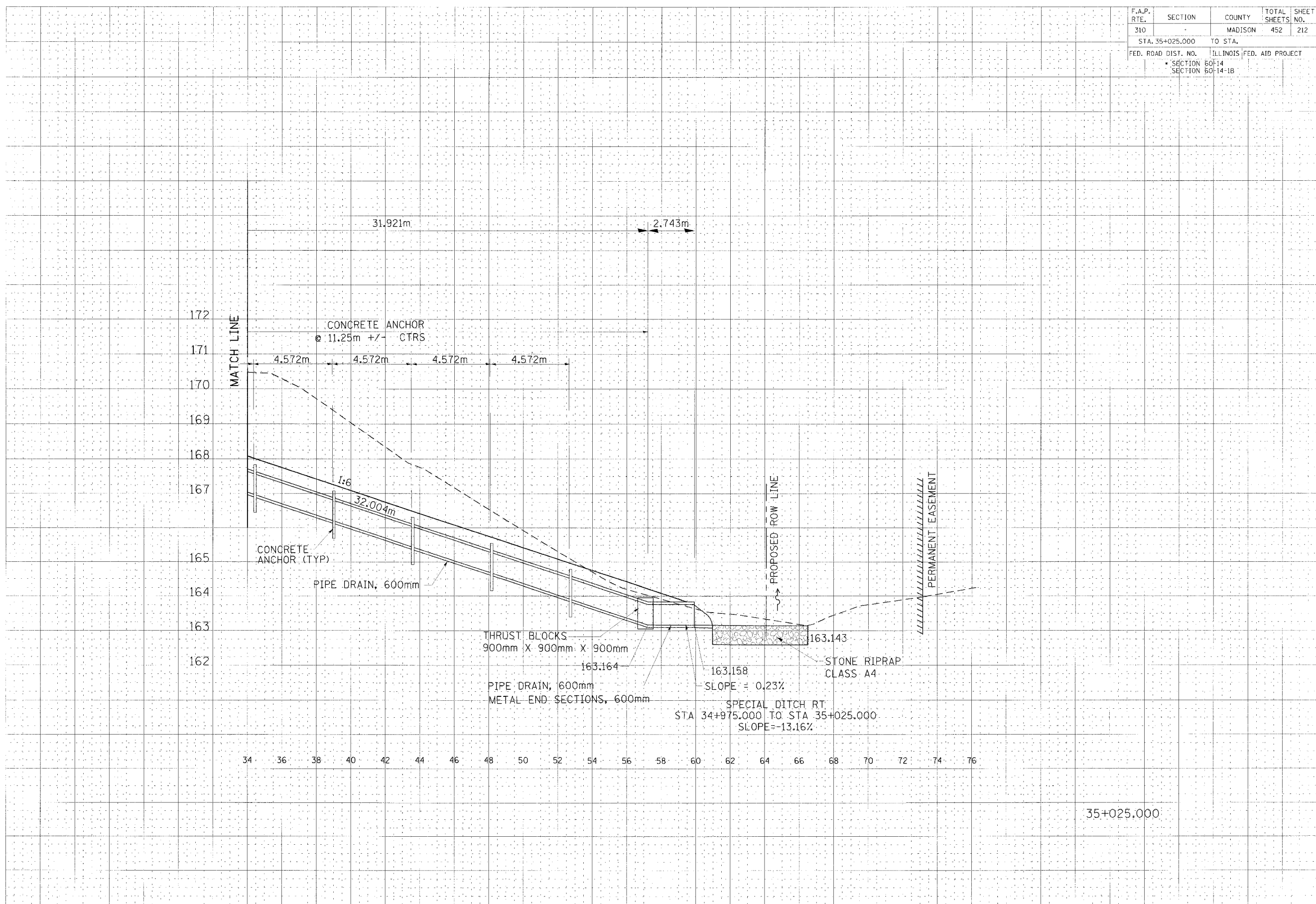


F.A.P. RTE.	SECTION	COUNTY	TOTAL SHEETS	SHEET NO.
310		MADISON	452	212
STA. 35+025.000		TO STA.		
FED. ROAD DIST. NO.		ILLINOIS	FED. AID PROJECT	
		SECTION 60-14 SECTION 60-14-1B		

DATE	
BY	
CHECKED	
DESIGNED	
APPROVED	

DATE	
BY	
CHECKED	
DESIGNED	
APPROVED	



35+025.000

CULVERT PROFILE, FAP ROUTE 310, STA 35+025.000