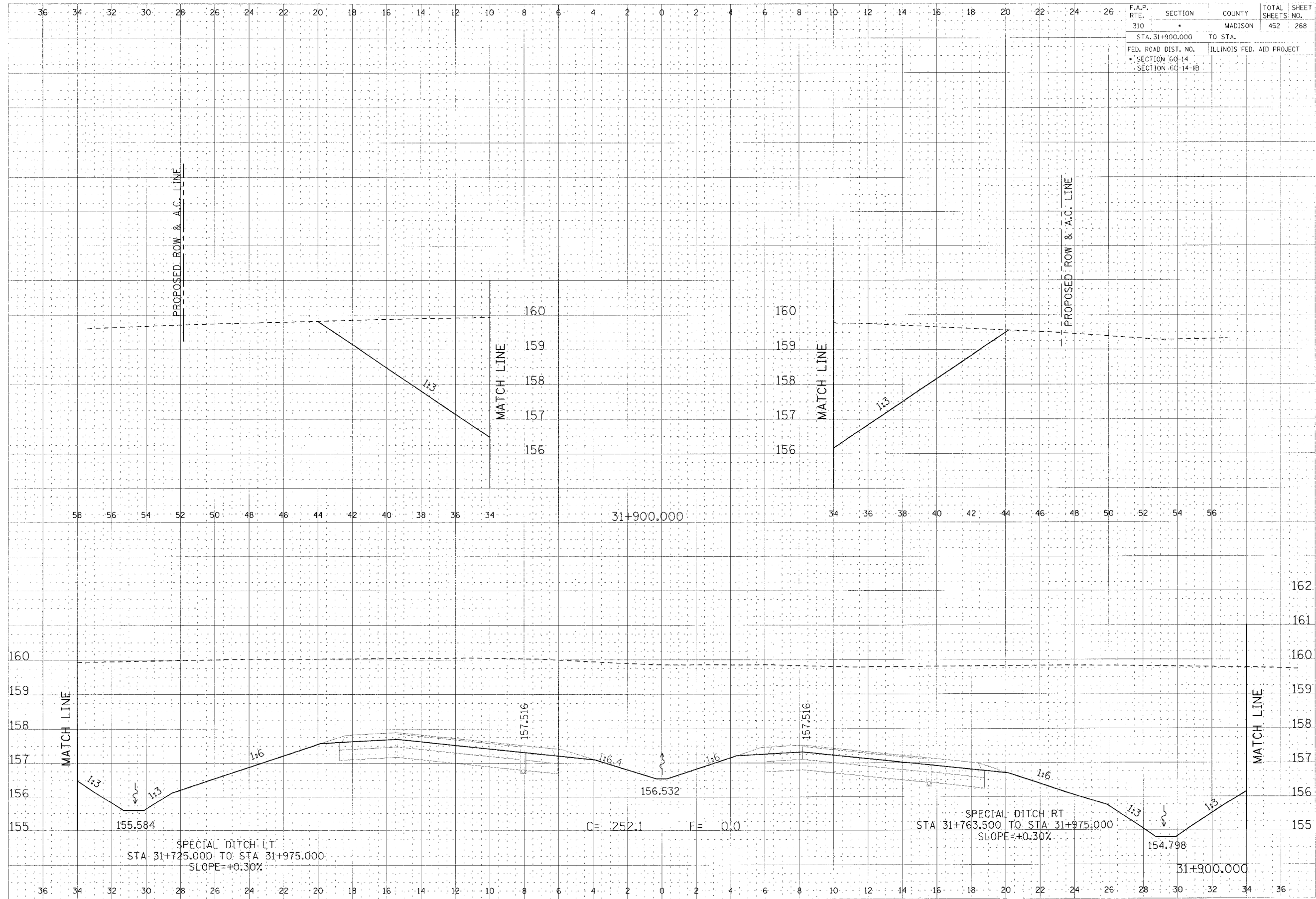


F.A.P. RTE.	SECTION	COUNTY	TOTAL SHEETS	SHEET NO.
310	•	MADISON	452	268
STA. 31+900.000		TO STA.		
FED. ROAD DIST. NO.		ILLINOIS FED. AID PROJECT		
• SECTION 6D-14		SECTION 6D-14-1B		



CROSS SECTION, FAP ROUTE 310, STA 31+900.000

DATE	DESCRIPTION

DATE	DESCRIPTION