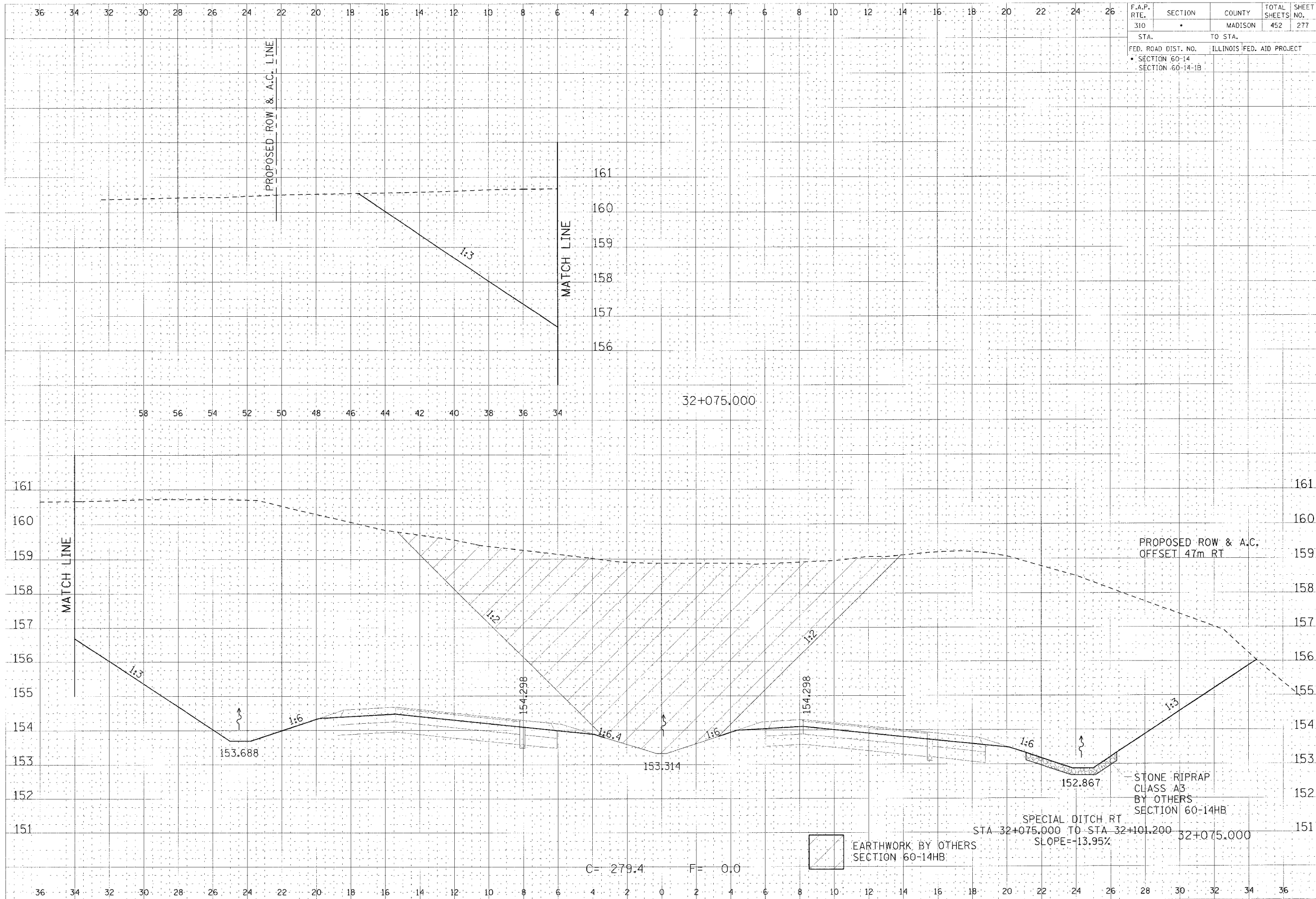


F.A.P. RTE.	SECTION	COUNTY	TOTAL SHEETS	SHEET NO.
310		MADISON	452	277
STA.	TO STA.			
FED. ROAD DIST. NO.		ILLINOIS	FED. AID PROJECT	
SECTION 60-14				
SECTION 60-14-1B				



CROSS SECTION, FAP ROUTE 310, STA 32+075.000

DATE: 11/11/03  
 DRAWN BY: J. B. BROWN  
 CHECKED BY: J. B. BROWN  
 PROJECT NO.: 03-01-01-01-01-01

DATE: 11/11/03  
 DRAWN BY: J. B. BROWN  
 CHECKED BY: J. B. BROWN  
 PROJECT NO.: 03-01-01-01-01-01