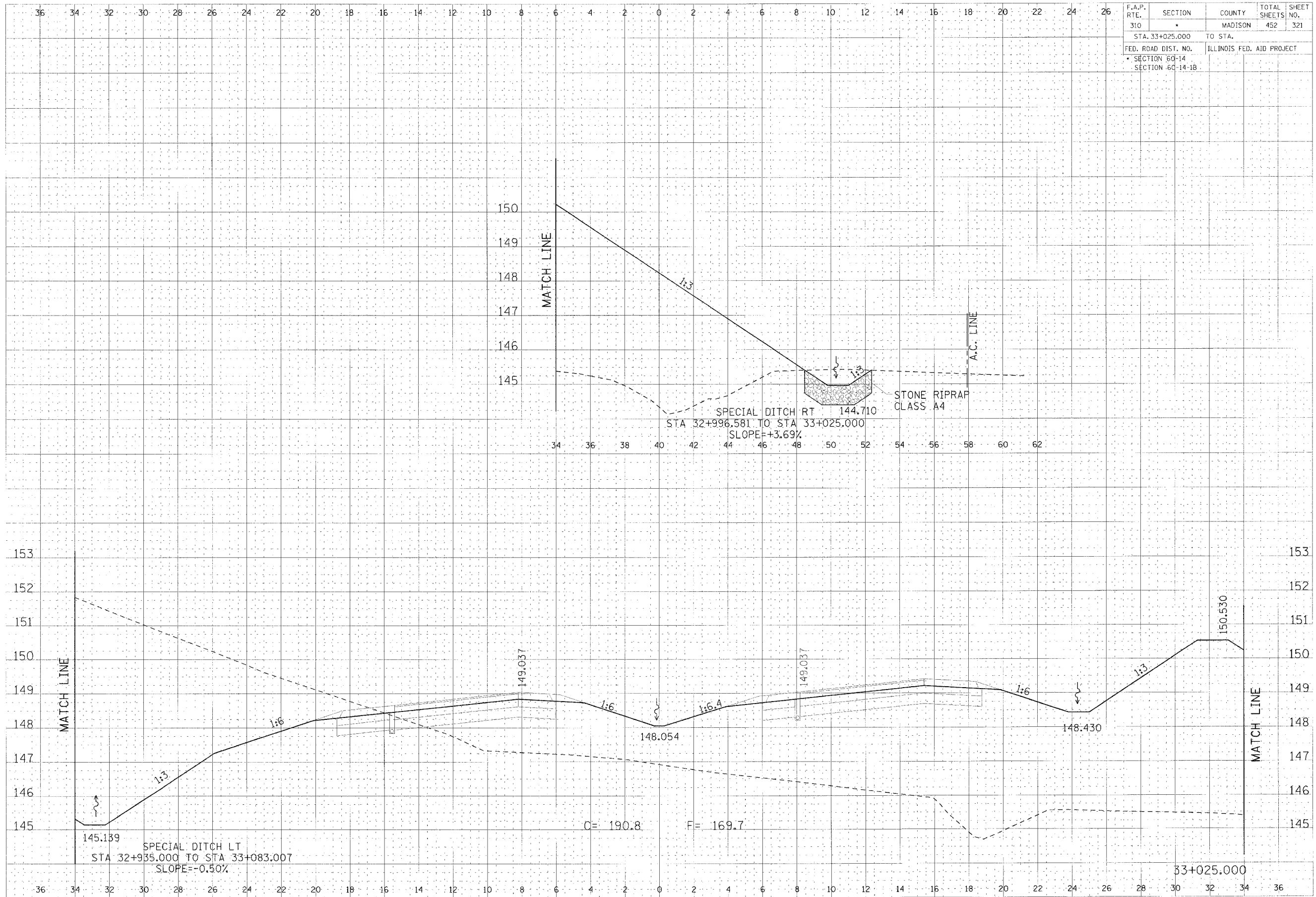


F.A.P. RTE.	SECTION	COUNTY	TOTAL SHEETS	SHEET NO.
310	*	MADISON	452	321
STA. 33+025.000		TO STA.		
FED. ROAD DIST. NO.		ILLINOIS FED. AID PROJECT		
* SECTION 60-14				
SECTION 60-14-1B				

DATE	BY	REVISION



CROSS SECTION, FAP ROUTE 310, STA 33+025.000