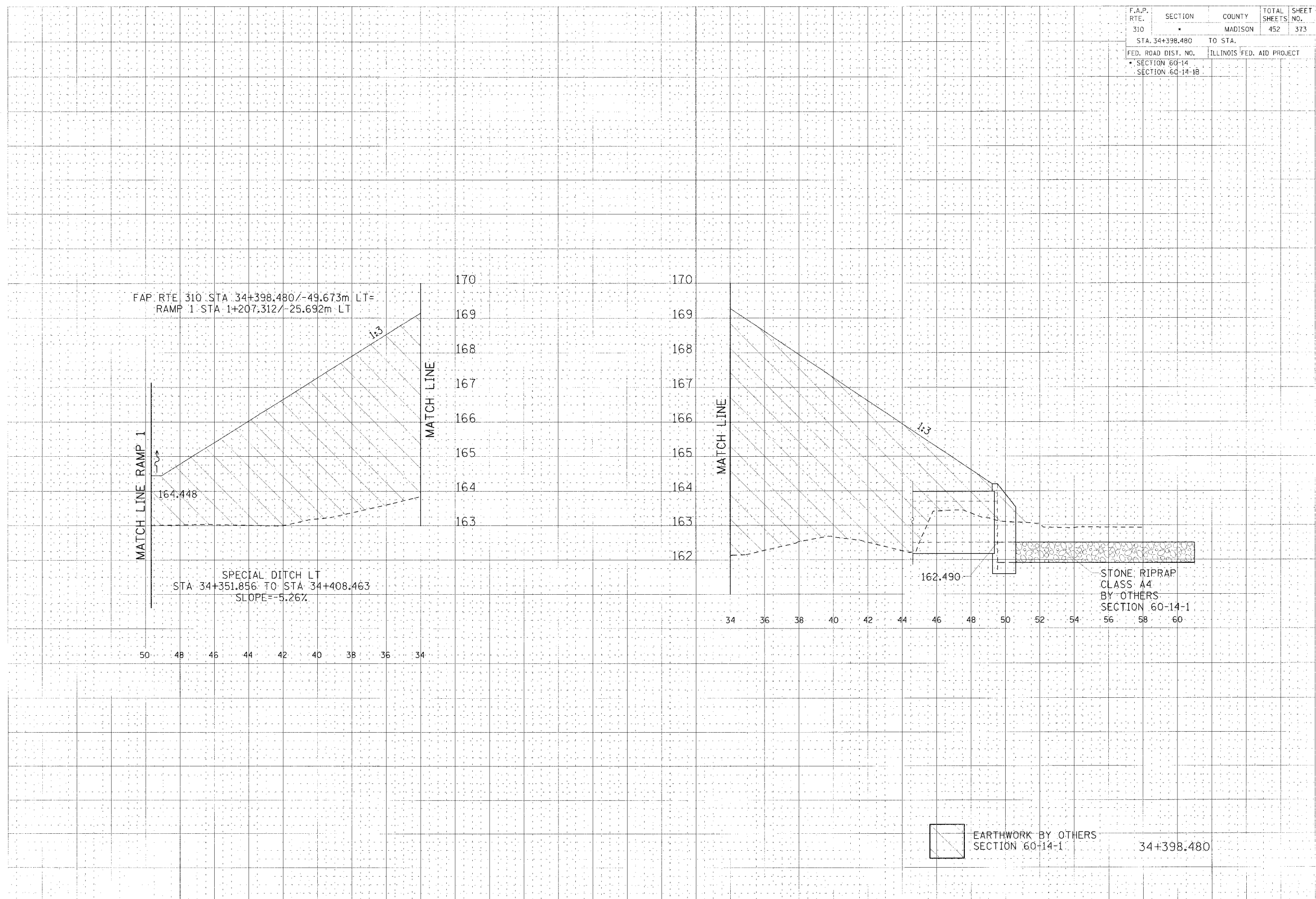


F.A.P. RTE.	SECTION	COUNTY	TOTAL SHEETS	SHEET NO.
310		MADISON	452	373
STA. 34+398.480		TO STA.		
FED. ROAD DIST. NO.		ILLINOIS FED. AID PROJECT		
SECTION 60-14		SECTION 60-14-1B		

DATE	11/19/93
BY	...
CHECKED	...
APPROVED	...

DATE	11/19/93
BY	...
CHECKED	...
APPROVED	...



CROSS SECTION, FAP ROUTE 310, STA 34+398.480