

36 34 32 30 28 26 24 22 20 18 16 14 12 10 8 6 4 2 0 2 4 6 8 10 12 14 16 18 20 22 24 26

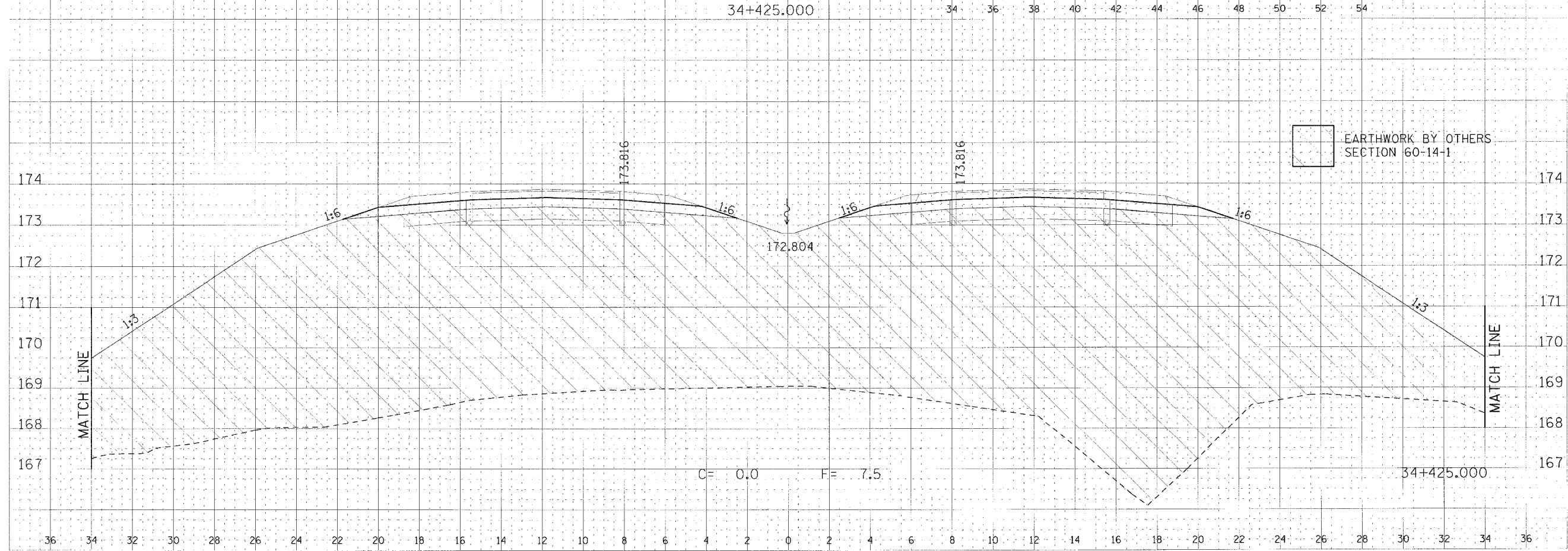
F.A.P. RTE.	SECTION	COUNTY	TOTAL SHEETS NO.
310	*	MADISON	452 376
STA. 34+425.000		TO STA.	
FED. ROAD DIST. NO.		ILLINOIS FED. AID PROJECT	
* SECTION 60-14			
SECTION 60-14-1B			

DATE: _____
 BY: _____
 CHECKED: _____
 APPROVED: _____
 TITLE: _____



34+425.000

DATE: _____
 BY: _____
 CHECKED: _____
 APPROVED: _____
 TITLE: _____



EARTHWORK BY OTHERS
SECTION 60-14-1

C= 0.0 F= 7.5

34+425.000

CROSS SECTION, FAP ROUTE 310, STA 34+425.000