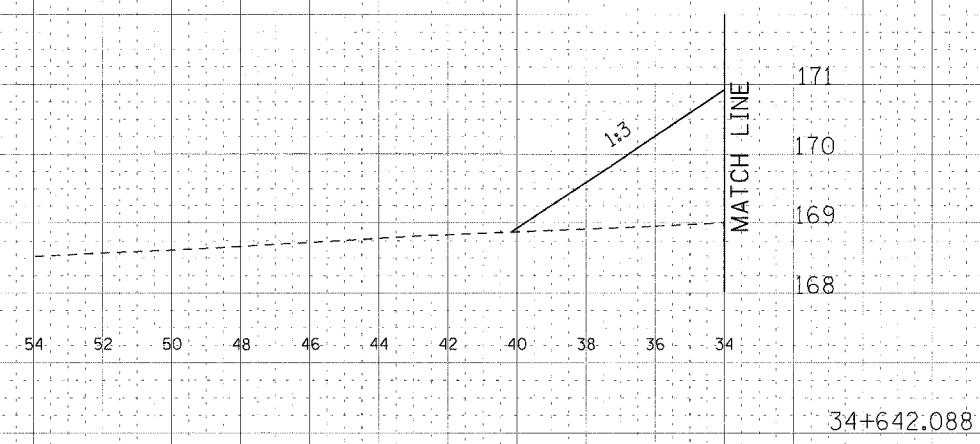


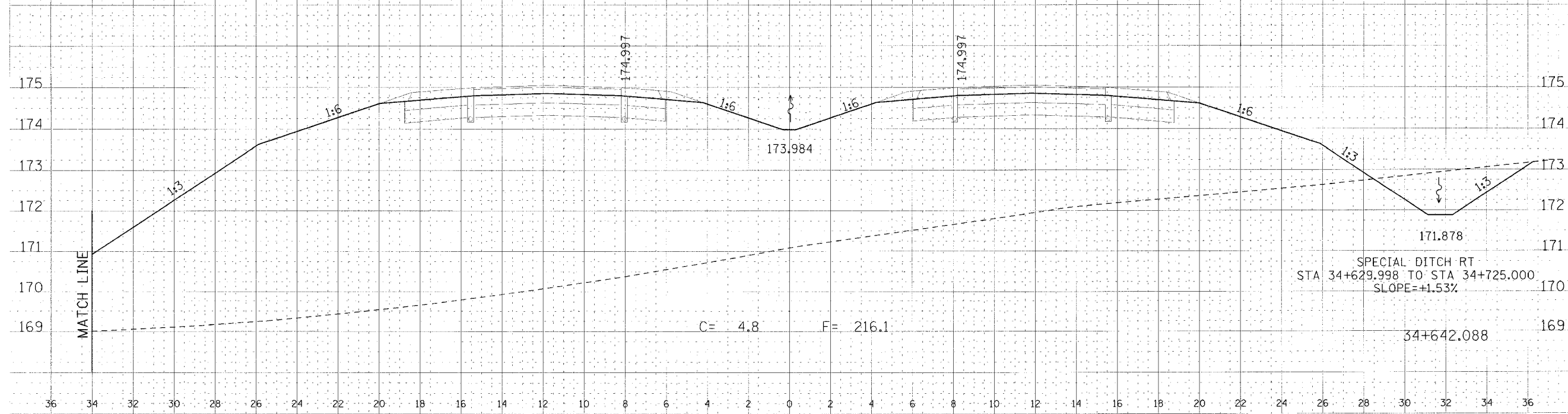
36 34 32 30 28 26 24 22 20 18 16 14 12 10 8 6 4 2 0 2 4 6 8 10 12 14 16 18 20 22 24 26

F.A.P. RTE.	SECTION	COUNTY	TOTAL SHEETS	SHEET NO.
310		MADISON	452	389
STA. 34+642.088		TO STA.		
FED. ROAD DIST. NO.		ILLINOIS FED. AID PROJECT		
SECTION 60-14				
SECTION 60-14-1B				

DATE	BY



DATE	BY



CROSS SECTION, FAP ROUTE 310, STA 34+642.088