

76411

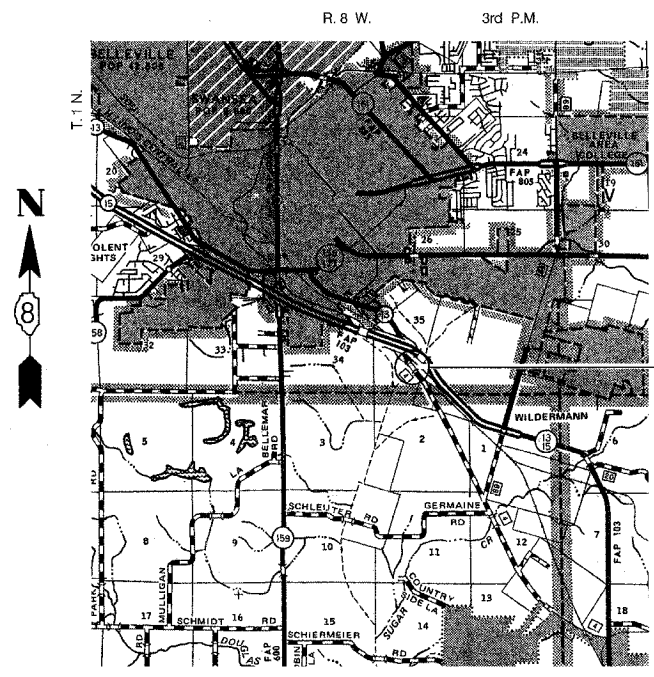
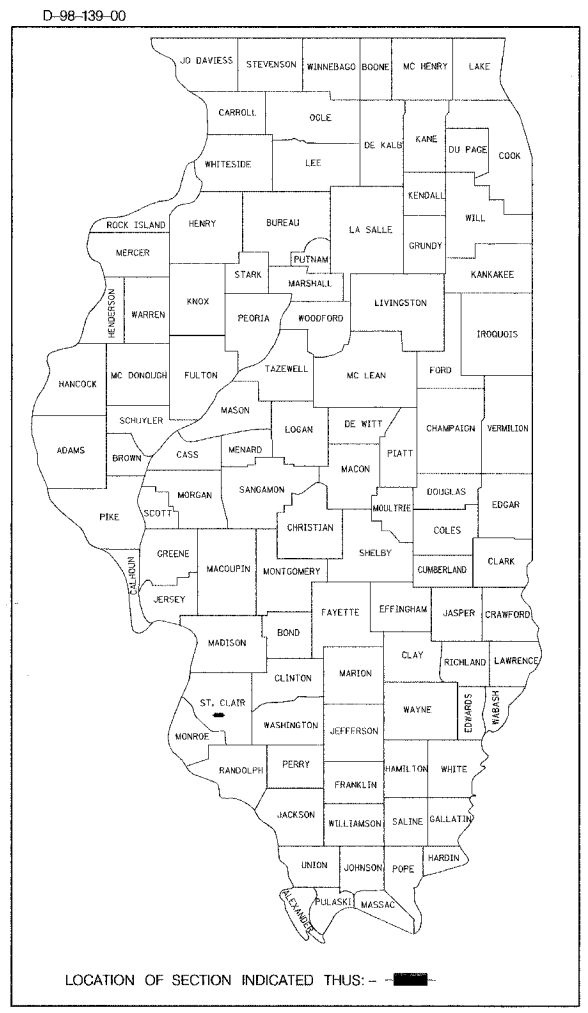
F.A.P. RTE.	SECTION	COUNTY	TOTAL SHEETS	SHEET NO.
103	27-3BR	ST. CLAIR	22	1
STA. 85+32 TO STA. 86+08				
FED. ROAD DIST. NO.	ILLINOIS	FED. AID PROJECT		

STATE OF ILLINOIS  
 DEPARTMENT OF TRANSPORTATION  
 DIVISION OF HIGHWAYS  
**PROPOSED  
 HIGHWAY PLANS**  
 F.A.P. ROUTE 103 (OLD ILLINOIS 13)  
 SECTION 27-3BR  
 PROJECT : *F-0103(065)*  
 ST. CLAIR COUNTY  
 C-98-059-05  
 STRUCTURE REPLACEMENT

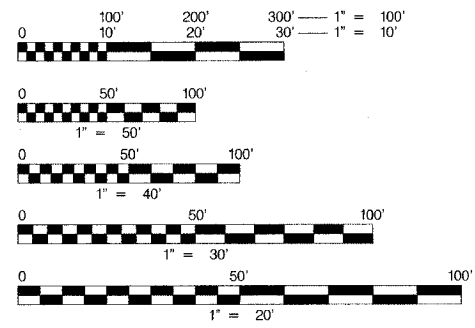
INDEX OF SHEETS

- 1 - COVER SHEET
- 2 - GENERAL NOTES
- 3 - SUMMARY OF QUANTITIES
- 4 - DETAILS & TYPICAL ROADWAY SECTIONS
- 5 - QUANTITY SCHEDULES
- 6 - PLAN & PROFILE
- 7 - 10 - STAGE CONSTRUCTION TRAFFIC DETAILS
- 11 - EROSION CONTROL
- 12 & 13 - CROSS SECTIONS
- 14 - GENERAL PLAN & ELEVATION
- 15 - STAGING & DETAILS
- 16 - GEOTEXTILE RETAINING WALL
- 17 - 19 - CULVERT DETAILS
- 20 - BAR SPLICER DETAILS
- 21 - TEMPORARY CONCRETE BARRIER DETAILS
- 22 - SOIL BORINGS

IDOT STANDARDS	
000001-04	635011-01
280001-02	701101-01
482001	701106-01
482011-01	701423-01
515001-02	701426-02
630001-06	702001-06
630301-03	704001-02
631011-02	720011
635006-02	780001-01

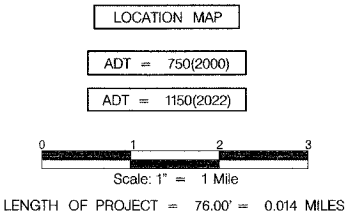


PROPOSED STRUCTURE:  
 REINFORCED CONCRETE DOUBLE BARREL BOX CULVERT,  
 LENGTH 51'-6", 12'-0" (M) X 10'-0" (H), 0° SKEW.  
 STA. 85+70. STRUCTURE REPLACEMENT OVER AN  
 UNNAMED TRIBUTARY TO RICHLAND CREEK.  
 S.N. 082-0402 (EXISTING) S.N. 082-2042 (PROPOSED)



FULL SIZE PLANS HAVE BEEN PREPARED USING STANDARD ENGINEERING SCALES. REDUCED SIZED PLANS WILL NOT CONFORM TO STANDARD SCALES. IN MAKING MEASUREMENTS ON REDUCED PLANS, THE ABOVE SCALES MAY BE USED.

FUNCTIONAL CLASSIFICATION : OTHER PRINCIPAL ARTERIAL



LATITUDE: 38° 29' 16"  
 LONGITUDE: 89° 57' 23.15"



*Christopher P. Kehlman 10/24/05*  
 EXPIRATION DATE: 11/30/05

STATE OF ILLINOIS  
 DEPARTMENT OF TRANSPORTATION  
 DIVISION OF HIGHWAYS

SUBMITTED March 23, 2006

Mike Amey  
 DEPUTY DIRECTOR OF HIGHWAYS REGION 5 / DISTRICT 8

May 12, 2006  
Mike Hume  
 ENGINEER OF DESIGN AND ENVIRONMENT

May 12, 2006  
Milton R. Sees, P.E.  
 DIRECTOR, DIVISION OF HIGHWAYS

PRINTED BY THE AUTHORITY  
 OF THE STATE OF ILLINOIS

PROJECT ENGINEER: PATTI LE BEAU (618)346-3179  
 SQUAD CONTACT: ARTHUR MUEHLFELD (618)346-3209

CONTRACT NO. 76411