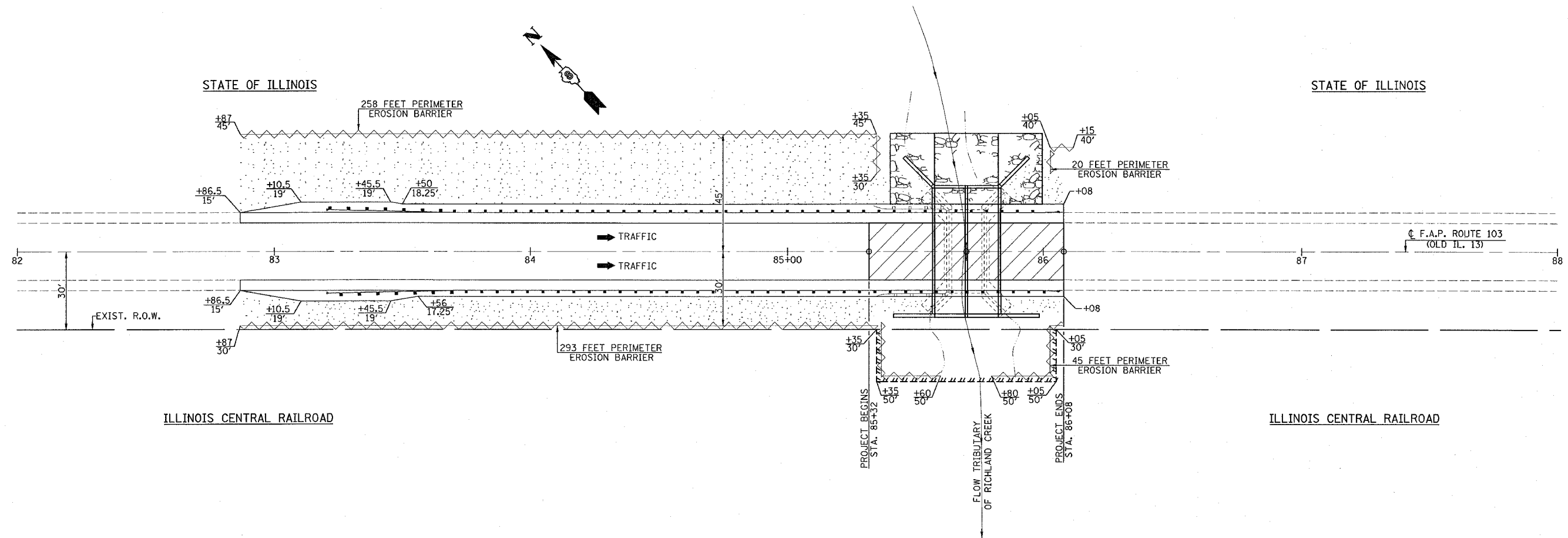
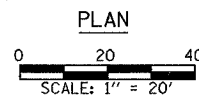


F.A.P. RTE.	SECTION	COUNTY	TOTAL SHEETS	SHEET NO.
103	27-3BR	ST. CLAIR	22	11
STA. 85+32 TO STA. 86+08				
FED. ROAD DIST. NO. ILLINOIS FED. AID PROJECT				
CONTRACT NO. 76411				



- LEGEND**
- PAVEMENT & STRUCTURE REMOVAL LIMITS
  - SEEDING, CLASS 2 WITH MULCH, METHOD 2
  - RIPRAP, CLASS A5
  - PERIMETER EROSION BARRIER



EROSION CONTROL  
 F.A.P. ROUTE 103 (OLD IL. ROUTE 13)  
 OVER TRIBUTARY OF RICHLAND CREEK  
 SECTION 27-3BR  
 ST. CLAIR COUNTY  
 STA. 85+70.00  
 S.N. 082-2042