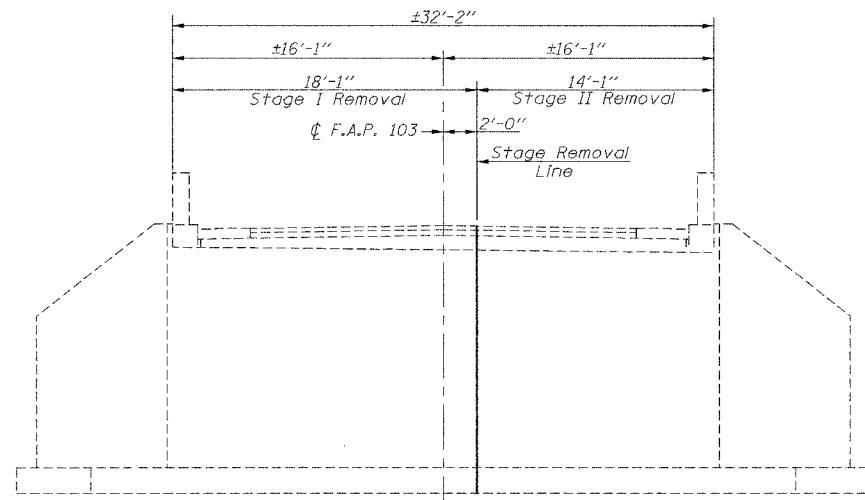


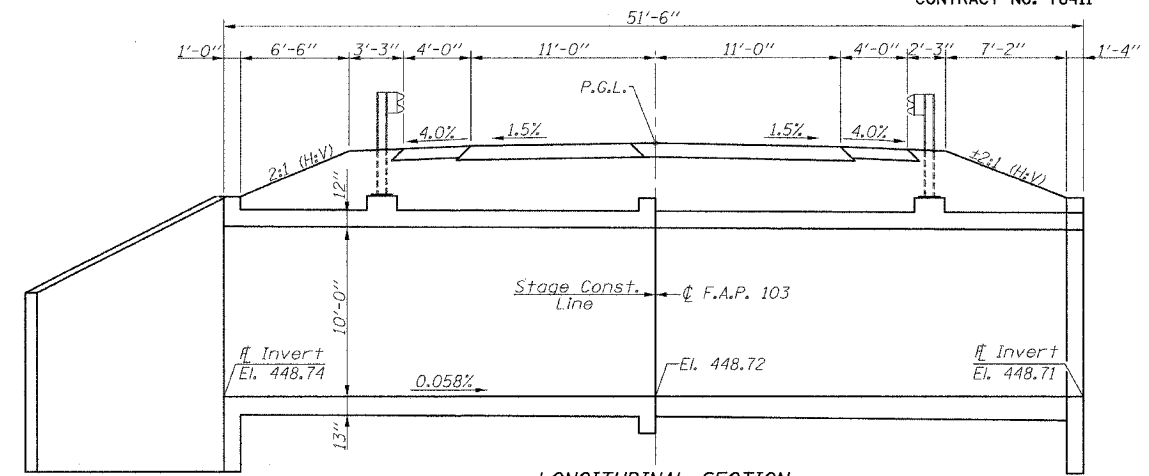
STATE OF ILLINOIS
DEPARTMENT OF TRANSPORTATION

ROUTE NO.	ST. CL. CO.	COUNTY	SHEET	SHEET	SHEET
F.A.P. 103	27-3BR	ST. CLAIR	22	15	
FED. ROAD DIST. NO. 7		ILLINOIS	FED. AID PROJECT		

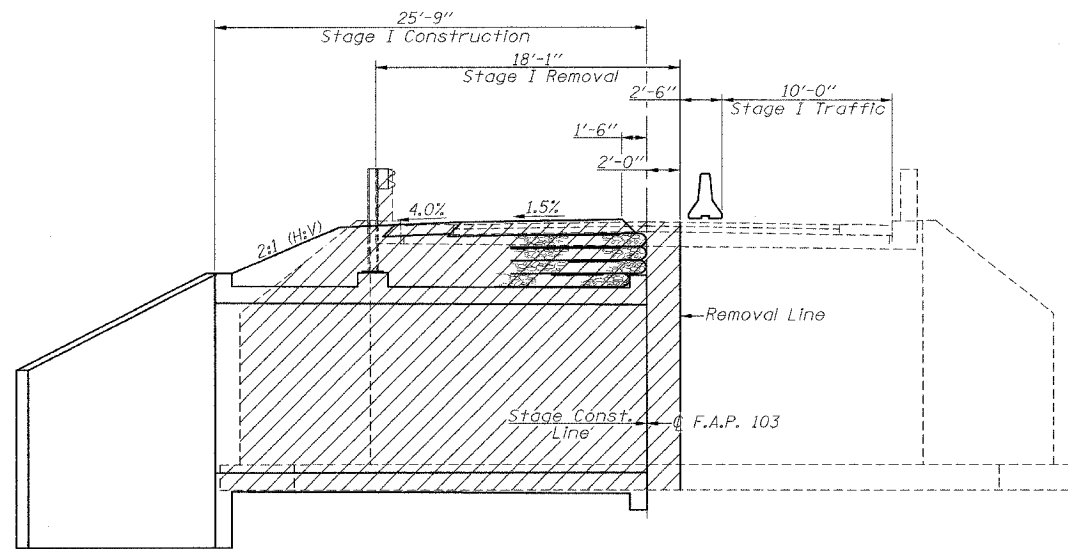
CONTRACT NO. 76411



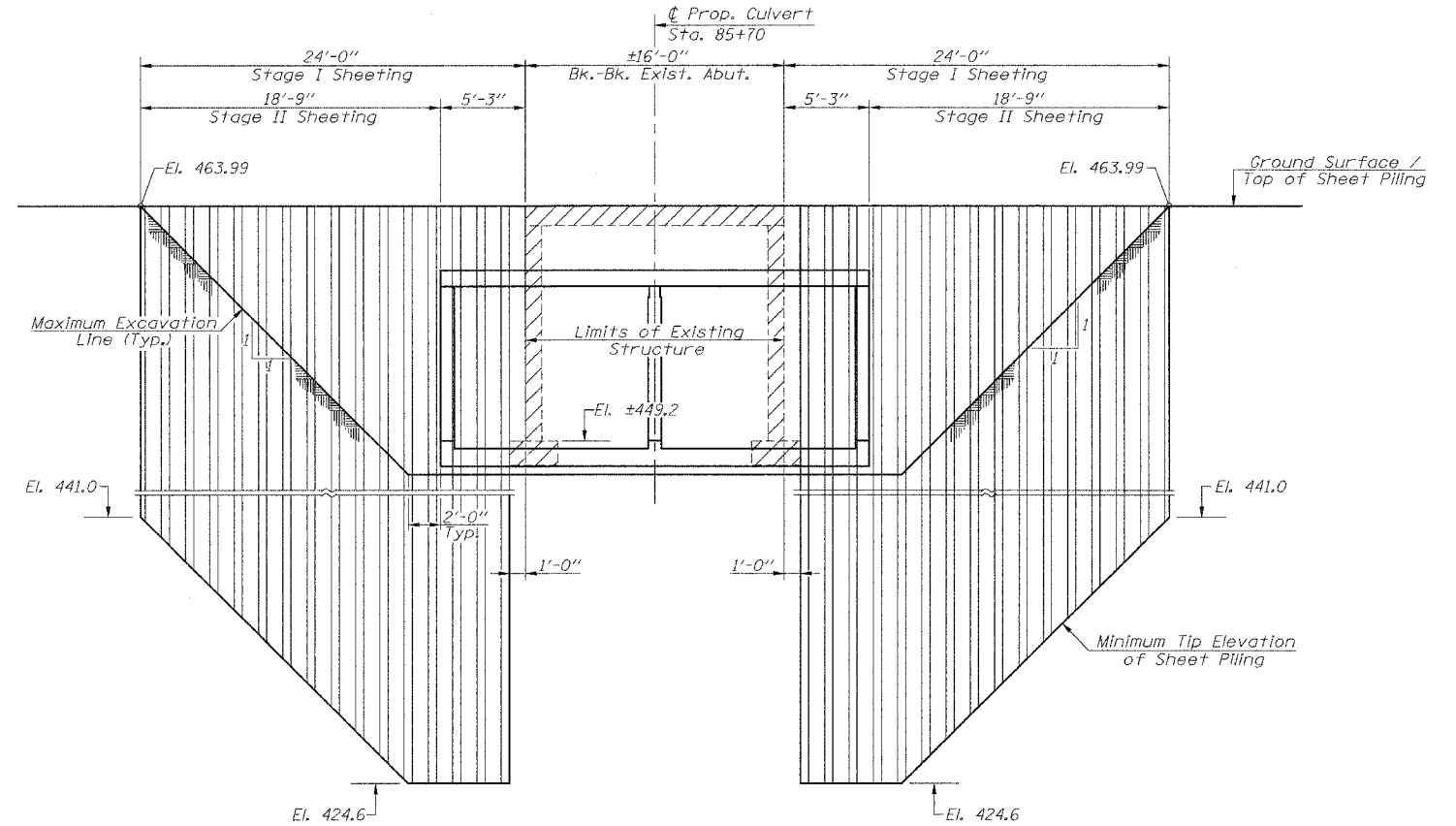
EXISTING BRIDGE ELEVATION
(Looking East)



LONGITUDINAL SECTION

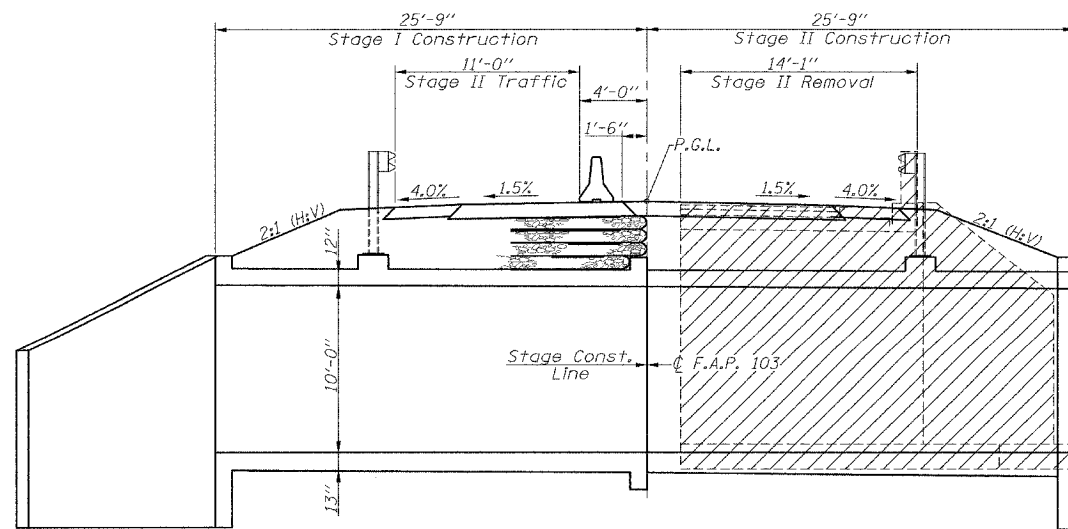


STAGE I TRAFFIC & CONSTRUCTION
(Looking East)



ELEVATION - TEMPORARY SHEET PILING
(Minimum Required Section Modulus = 33.5 in³/ft.)

If the contractor chooses to alter the temporary cantilevered sheet piling design requirements shown on the plans, a design submittal including plan details and calculations will be required for review and acceptance by the Engineer.
The contractor shall connect the first sheet to the existing abutment wall to ensure stability of sheets driven to the top of the existing footing. The connection shall be reviewed and accepted by the Engineer and included in the cost for Temporary Sheet Piling.



STAGE II TRAFFIC & CONSTRUCTION
(Looking East)

▨ - Indicates removal of existing structure

STAGING AND DETAILS
F.A.P. ROUTE 103 (OLD IL. ROUTE 13)
OVER TRIBUTARY TO RICHLAND CREEK
SECTION 27-3BR
ST. CLAIR COUNTY
STA. 85+70.00
S.N. 082-2042