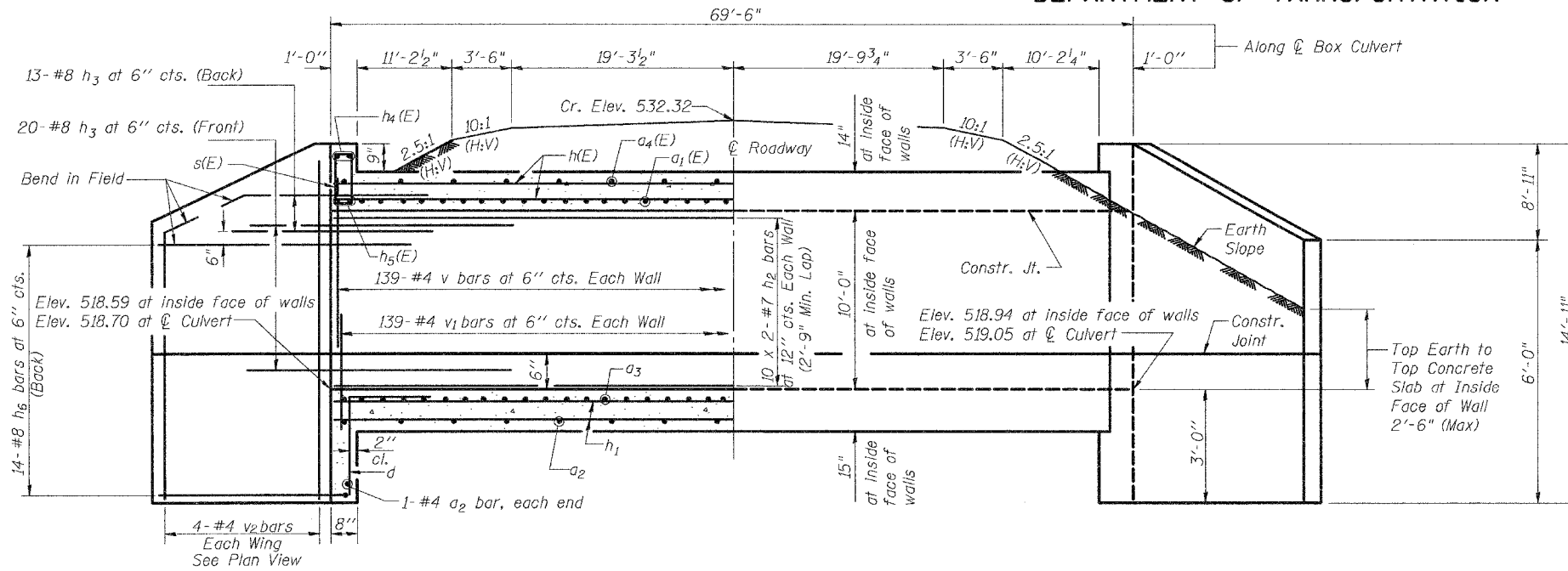


STATE OF ILLINOIS  
DEPARTMENT OF TRANSPORTATION

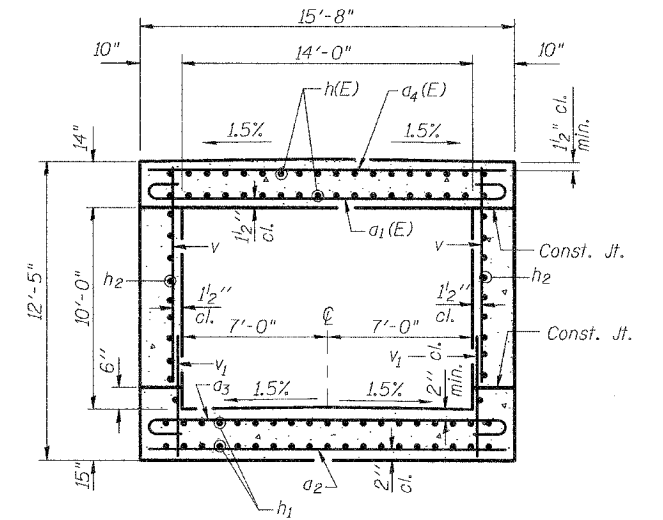
ROUTE NO.	SECTION	COUNTY	TOTAL SHEETS	SHEET NO.	SHEET NO. 2 4 SHEETS
F.A.P. 314	110-IVBR-1	MADISON	77	35	
FED. ROAD DIST. NO. 7	ILLINOIS	FED. AID PROJECT-			

Contract #76549

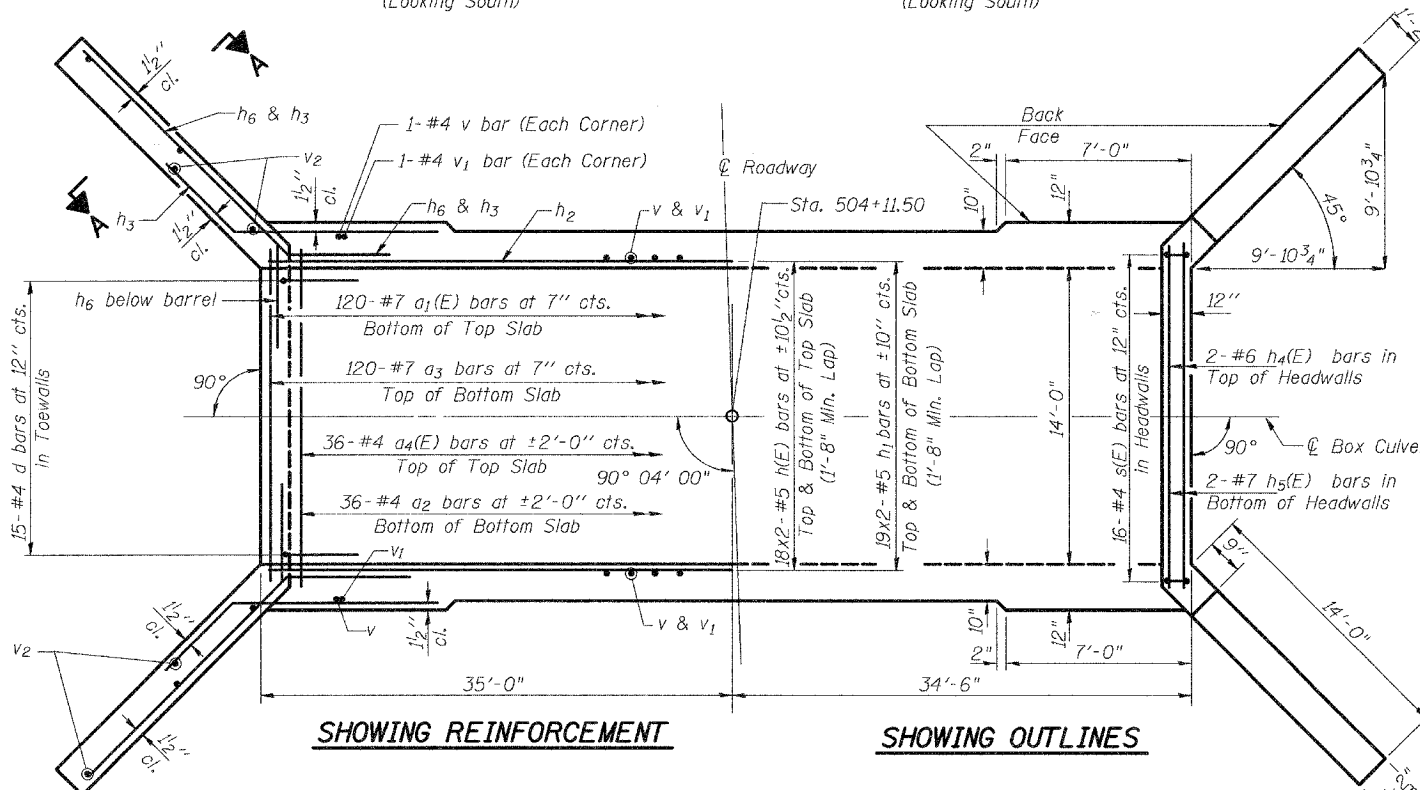


**HALF LONG SECTION**  
(Looking South)

**HALF ELEVATION**  
(Looking South)



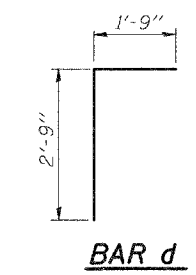
**SECTION THRU BARREL**



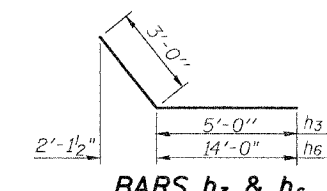
**SHOWING REINFORCEMENT**

**SHOWING OUTLINES**

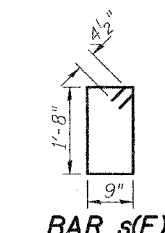
PLAN



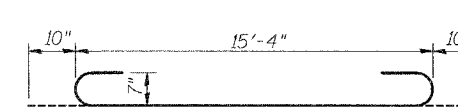
**BAR d**



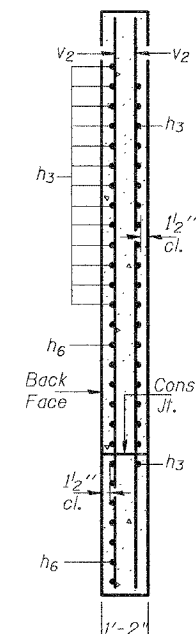
**BARS h3 & h6**



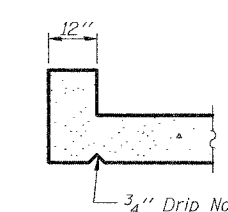
**BAR s(E)**



**BAR a1(E) & a3**



**SECTION A-A**



**SECTION THRU HEADWALLS**

**BILL OF MATERIAL**

Bar	No.	Size	Length	Shape
a1(E)	120	#7	17'-0"	U
a2	38	#4	15'-4"	U
a3	120	#7	17'-0"	U
a4(E)	36	#4	15'-4"	U
d	30	#4	4'-6"	L
h(E)	72	#5	35'-7"	—
h1	76	#5	35'-7"	—
h2	40	#7	36'-2"	—
h3	132	#8	8'-0"	—
h4(E)	4	#6	15'-3"	—
h5(E)	4	#7	15'-3"	—
h6	56	#8	17'-0"	—
v	282	#4	10'-5"	—
v1	282	#4	3'-6"	—
v2	16	#4	14'-7"	—
s(E)	32	#4	5'-7"	□
Concrete Box Culverts	Cu. Yd.		173.4	
Reinforcement Bars	Pound		18,570	
Reinforcement Bars, Epoxy Coated	Pound		7,550	

Note: Reinforcement Bars Designated (E) Shall Be Epoxy Coated.

**CULVERT DETAILS**  
**IL. ROUTE 4 OVER**  
**ABANDONED RAILROAD**  
**F.A.P. ROUTE 314 - SEC. 110-IVBR-1**  
**MADISON COUNTY**  
**STATION 504+11.50**  
**S.N. 060-2406**

DESIGNED	ADL
CHECKED	WLW
DRAWN	RJP
CHECKED	ADL
<b>SSB-H-0</b> 6-1-2000	

3/30/2006

p:\02f1\les\020409\020409.23 WD #12 Ped Culvert\SN060-2406.dgn