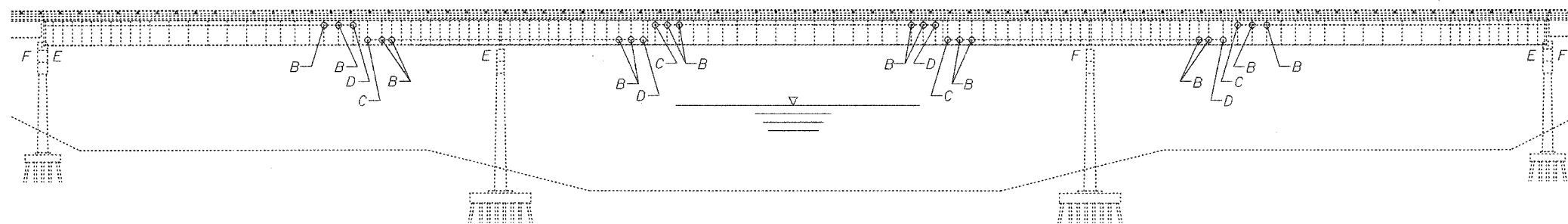


STATE OF ILLINOIS
DEPARTMENT OF TRANSPORTATION

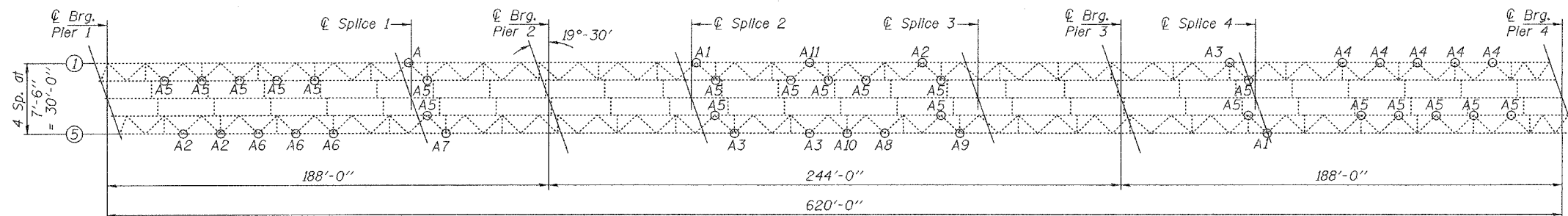
ROUTE NO.	SECTION	COUNTY	TOTAL SHEETS	SHEET NO.
IL 154		RANDOLPH	5	2
FED. ROAD DIST. NO. 7	ILLINOIS	FED. AID PROJECT		

SHEET NO. 1
4 SHEETS

Contract Number: 76A16



ELEVATION



PLAN

A Thru A11 Repair details A thru A11. See sheet 2 of 3.
B C D Stiffener modification detail. See sheet 3 of 3.

GENERAL NOTES

All structural steel shall conform to AASHTO Classification M-270 Gr. 36, unless otherwise noted.

Fasteners shall be high strength bolts. Bolts $7/8"$ ϕ , open holes $15/16"$ ϕ , unless otherwise noted.

Plan dimensions and details relative to existing structure have been taken from existing plans and are subject to nominal construction variations. It shall be the Contractor's responsibility to verify such dimensions and details in the field and make necessary approved adjustments prior to construction or ordering of materials. Such variations shall not be cause for additional compensation for a change in the scope of the work, however, the Contractor will be paid for the quantity actually furnished at the unit price bid for the work.

The existing structural steel coating contains lead. The Contractor should take appropriate precautions to deal with the presence of lead on this project.

All new structural steel shall be shop painted with the inorganic zinc rich primer per AASHTO M300, Type 1. Cost included with Structural Steel Repair.

Surfaces of existing steel exposed down to bare metal as a result of the stiffener modification work shall be spot cleaned and painted with an aluminum epoxy mastic according to Article 506.05. The cost of this work shall be included with Stiffener Intersection Modification.

Cost of removal and/or re-installation of all members necessary to complete the work as detailed on the plans and as specified in the Special Provisions shall be included in the cost of Structural Steel Repair. Cost of temporarily supporting the lateral bracing is included with Structural Steel Repair.

Existing structural steel that will be in contact with new structural steel shall be cleaned and painted prior to erection as required by the Special Provision "Cleaning and Painting Contact Surface Areas of Existing Steel Structures".

The Contractor shall grind all cracked welds parallel to the direction of the existing weld and not perpendicular to the weld.

TOTAL BILL OF MATERIAL

ITEM	UNIT	TOTAL
Stiffener Intersection Modification	Each	200
Structural Steel Repair	Pound	3290

DESIGNED	<i>Phil Ballew</i>
CHECKED	<i>Adrian T. Holloway</i>
DRAWN	<i>baliva</i>
CHECKED	<i>S.J.B. A.T.H.</i>

April 27, 2006
EXAMINED *John A. Maria*
ENGINEER OF STRUCTURAL SERVICES
PASSED *Ralph E. Anderson*
ENGINEER OF BRIDGES AND STRUCTURES



EXPIRES 11-30-2006

PLAN & ELEVATION
FAP RT. 329 (IL 154)
OVER THE KASKASKIA RIVER
RANDOLPH COUNTY
SN 079-0013