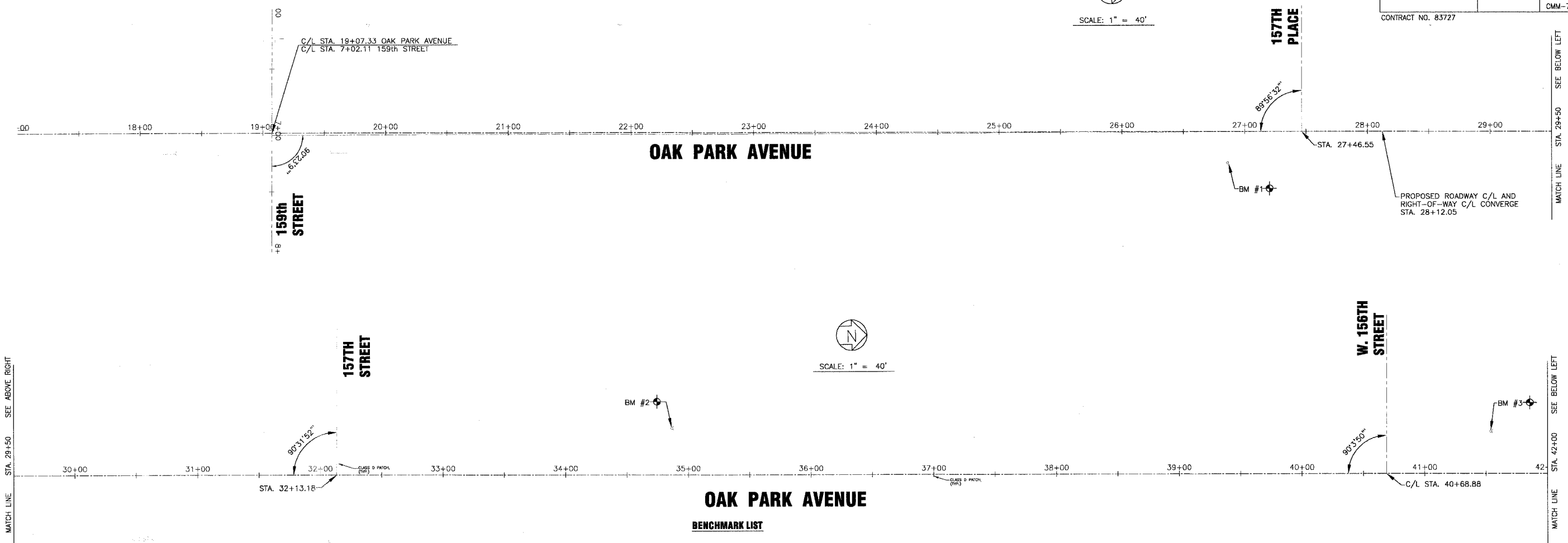
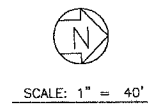
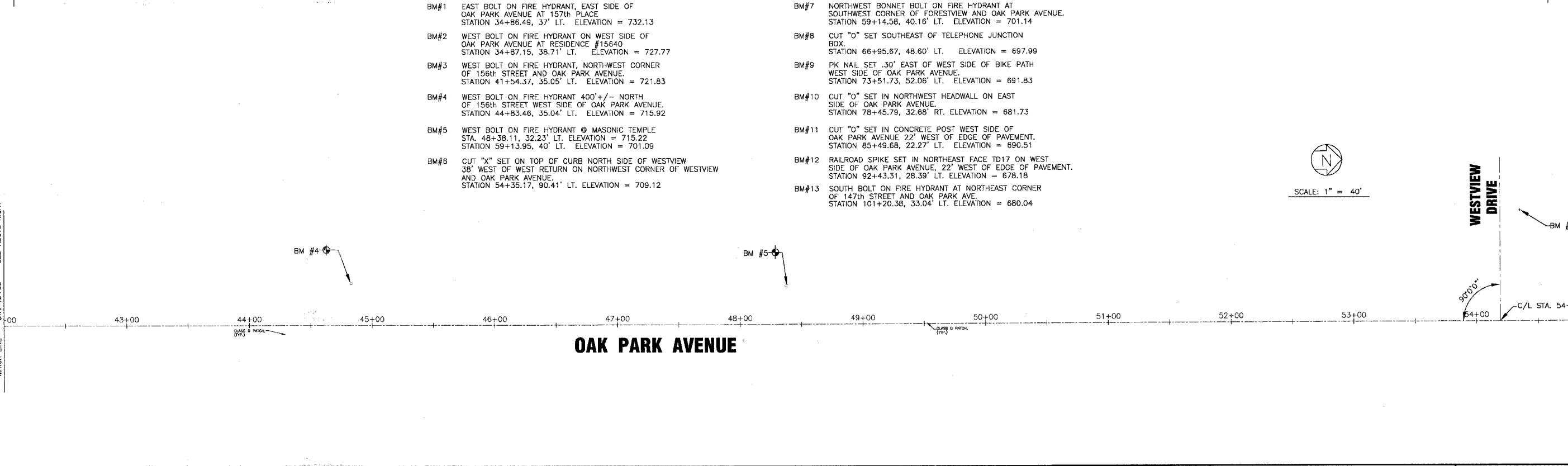
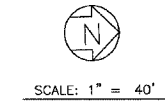


F.A.U. ROUTE NO.	SECTION	COUNTY	TOTAL SHEETS	SHEET NO.
2774	99-00073-00-WR	COOK	116	15
STA.	TO STA.			
FED. ROAD DIST. NO. 1	ILLINOIS	FED AID PROJECT CMM-7003 (750)		
CONTRACT NO. 83727				



BENCHMARK LIST

- | | |
|--|---|
| <p>BM#1 EAST BOLT ON FIRE HYDRANT, EAST SIDE OF OAK PARK AVENUE AT 157th PLACE
STATION 34+86.49, 37' LT. ELEVATION = 732.13</p> <p>BM#2 WEST BOLT ON FIRE HYDRANT ON WEST SIDE OF OAK PARK AVENUE AT RESIDENCE #15640
STATION 34+87.15, 38.71' LT. ELEVATION = 727.77</p> <p>BM#3 WEST BOLT ON FIRE HYDRANT, NORTHWEST CORNER OF 156th STREET AND OAK PARK AVENUE.
STATION 41+54.37, 35.05' LT. ELEVATION = 721.83</p> <p>BM#4 WEST BOLT ON FIRE HYDRANT 400'+/- NORTH OF 156th STREET WEST SIDE OF OAK PARK AVENUE.
STATION 44+83.46, 35.04' LT. ELEVATION = 715.92</p> <p>BM#5 WEST BOLT ON FIRE HYDRANT @ MASONIC TEMPLE
STA. 48+38.11, 32.23' LT. ELEVATION = 715.22
STATION 59+13.95, 40' LT. ELEVATION = 701.09</p> <p>BM#6 CUT "X" SET ON TOP OF CURB NORTH SIDE OF WESTVIEW 38' WEST OF WEST RETURN ON NORTHWEST CORNER OF WESTVIEW AND OAK PARK AVENUE.
STATION 54+35.17, 90.41' LT. ELEVATION = 709.12</p> | <p>BM#7 NORTHWEST BONNET BOLT ON FIRE HYDRANT AT SOUTHWEST CORNER OF FORESTVIEW AND OAK PARK AVENUE.
STATION 59+14.58, 40.16' LT. ELEVATION = 701.14</p> <p>BM#8 CUT "O" SET SOUTHEAST OF TELEPHONE JUNCTION BOX.
STATION 66+95.67, 48.60' LT. ELEVATION = 697.99</p> <p>BM#9 PK NAIL SET .30' EAST OF WEST SIDE OF BIKE PATH WEST SIDE OF OAK PARK AVENUE.
STATION 73+51.73, 52.06' LT. ELEVATION = 691.83</p> <p>BM#10 CUT "O" SET IN NORTHWEST HEADWALL ON EAST SIDE OF OAK PARK AVENUE
STATION 78+45.79, 32.68' RT. ELEVATION = 681.73</p> <p>BM#11 CUT "O" SET IN CONCRETE POST WEST SIDE OF OAK PARK AVENUE 22' WEST OF EDGE OF PAVEMENT.
STATION 85+49.68, 22.27' LT. ELEVATION = 690.51</p> <p>BM#12 RAILROAD SPIKE SET IN NORTHEAST FACE TD17 ON WEST SIDE OF OAK PARK AVENUE, 22' WEST OF EDGE OF PAVEMENT.
STATION 92+43.31, 28.39' LT. ELEVATION = 678.18</p> <p>BM#13 SOUTH BOLT ON FIRE HYDRANT AT NORTHEAST CORNER OF 147th STREET AND OAK PARK AVE.
STATION 101+20.38, 33.04' LT. ELEVATION = 680.04</p> |
|--|---|



I:\OAKF\1000\46\DWG\20146-TIES.dwg
 Plotter: 5-01-06 @ 4:56pm By: 354rjp
 Copyright © 2004, By Baxter & Woodman, Inc.
 State of Illinois - Professional Design Firm
 License No. - 184 001121 - Expires 4-30-05

CONSULTANTS	REV. NO.	DATE	DESCRIPTION
	1	4-28-06	PER IDOT AND COOK COUNTY COMMENTS
* - REFER TO EQUIPMENT MANUFACTURER'S SHOP DRAWINGS			

BAXTER & WOODMAN
 Consulting Engineers

Crystal Lake, Illinois 815.459.1260
 Burlington, Wisconsin 262.763.7834
 Mokena, Illinois 708.478.2090
 DeKalb, Illinois 815.787.3111
 Grayslake, Illinois 815.233.5089
 Rockford, Illinois 815.488.1551
 Plainfield, Illinois 815.608.7485

CITY OF OAK FOREST, ILLINOIS
OAK PARK AVENUE PROJECT

ALIGNMENT AND TIES
OAK PARK AVENUE
STA. 17+00 TO STA. 55+00

DESIGNED BY	SCALE
NJP	HORIZ: 1"=40'
DRAWN BY	PROJECT NO.
UKB	020146
CHECKED BY	SHEET NO.
NJP	15 OF 116
DATE	
1-20-05	