

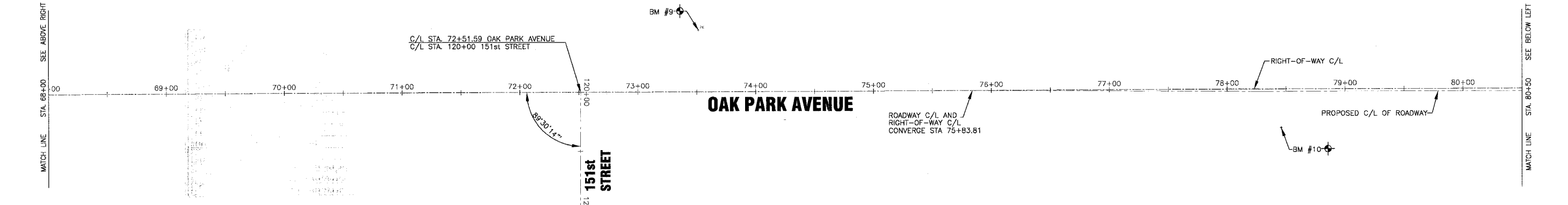
|                       |                |          |                 |           |
|-----------------------|----------------|----------|-----------------|-----------|
| F.A.U. ROUTE NO.      | SECTION        | COUNTY   | TOTAL SHEETS    | SHEET NO. |
| 2774                  | 99-00073-00-WR | COOK     | 116             | 16        |
| STA.                  | TO STA.        | ILLINOIS | FED AID PROJECT |           |
| FED. ROAD DIST. NO. 1 |                |          | CMM-7003 (750)  |           |
| CONTRACT NO. 83727    |                |          |                 |           |



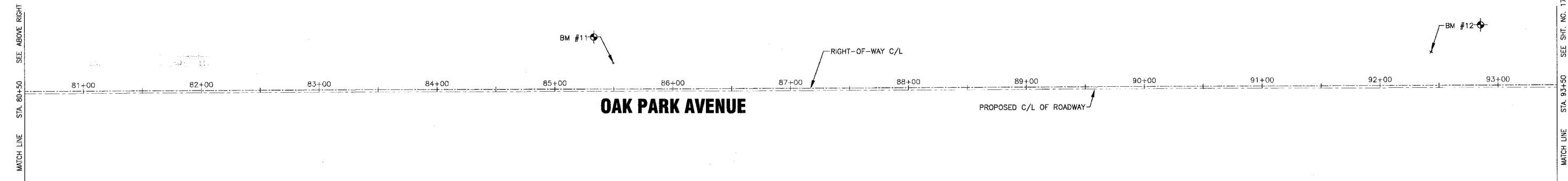
SCALE: 1" = 40'



SCALE: 1" = 40'

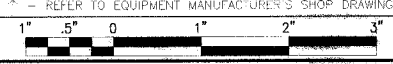


SCALE: 1" = 40'



I:\OAKF\020146\Drawings\20146\_TES.dwg  
 Profile: 4-27-05 @ 3:56pm By: 231ukb  
 Copyright © 2004, By: Baxter & Woodman, Inc.  
 State of Illinois - Professional Design Firm  
 License No. - 184-001121 - Expires 4-30-05

| CONSULTANTS   | REV. NO. | DATE    | DESCRIPTION                       |
|---|----------|---------|-----------------------------------|
|   | 1        | 4-28-06 | PER IDOT AND COOK COUNTY COMMENTS |
| * - REFER TO EQUIPMENT MANUFACTURER'S SHOP DRAWINGS |          |         |                                   |



**BAXTER & WOODMAN**  
 Consulting Engineers

*Baxter & Woodman*  
 Crystal Lake, Illinois 815.456.1260  
 Burlington, Wisconsin 262.763.7834  
 Mokena, Illinois 708.478.2090  
 DeKalb, Illinois 815.787.3111  
 Grayslake, Illinois 847.220.6089  
 Rockford, Illinois 815.489.1551  
 Plainfield, Illinois 815.609.7425

**CITY OF OAK FOREST, ILLINOIS**  
**OAK PARK AVENUE PROJECT**

**ALIGNMENT AND TIES**  
**OAK PARK AVENUE**  
**STA. 55+00 TO STA. 93+50**

|             |               |
|-------------|---------------|
| DESIGNED BY | SCALE         |
| NJP         | HORIZ: 1"=40' |
| DRAWN BY    | PROJECT NO.   |
| UKB         | 020146        |
| CHECKED BY  | SHEET NO.     |
| NJP         | 16 OF 116     |
| DATE        |               |
| 1-20-05     |               |