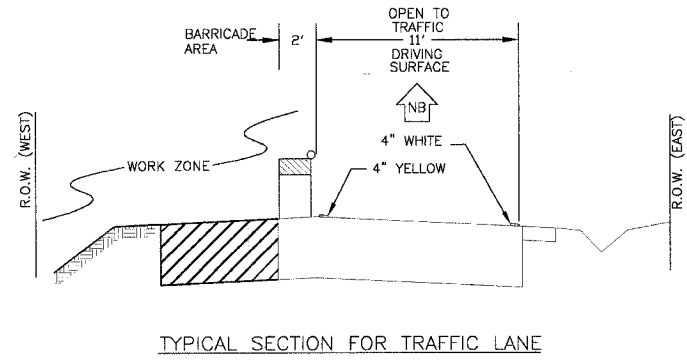
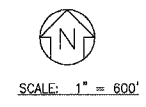


F.A.U. ROUTE NO.	SECTION	COUNTY	TOTAL SHEETS	SHEET NO.
2774	99-00073-00-WR	COOK	116	21A
STA.	TO STA.			
FED. ROAD DIST. NO. 1	ILLINOIS	FED AID PROJECT CMM-7003 (750)		
CONTRACT NO. 83727				

**LOCAL DETOUR PLAN LEGEND**

- SIGN
- TYPE III BARRICADE(S) WITH 18 UNLESS OTHERWISE NOTED

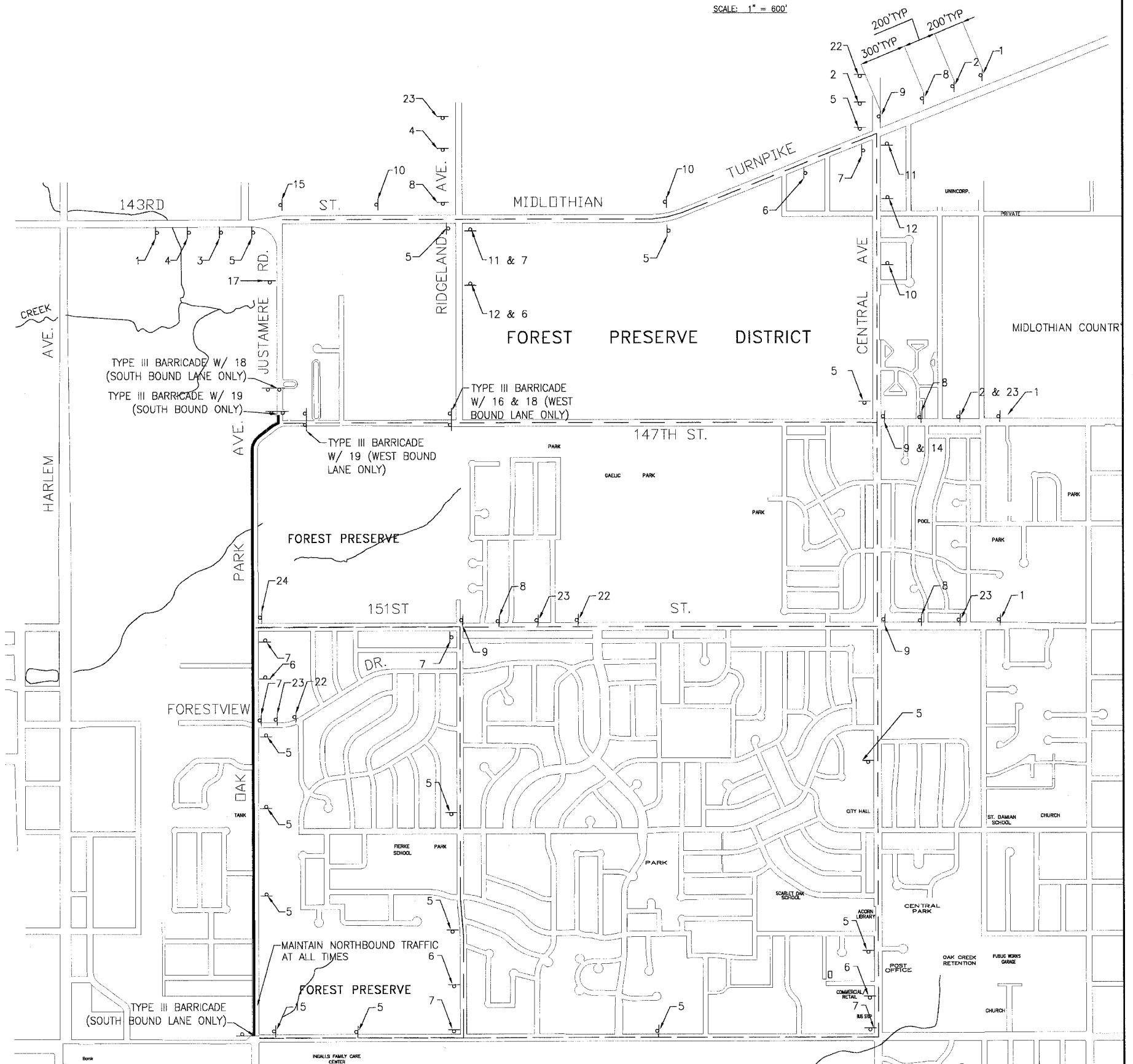
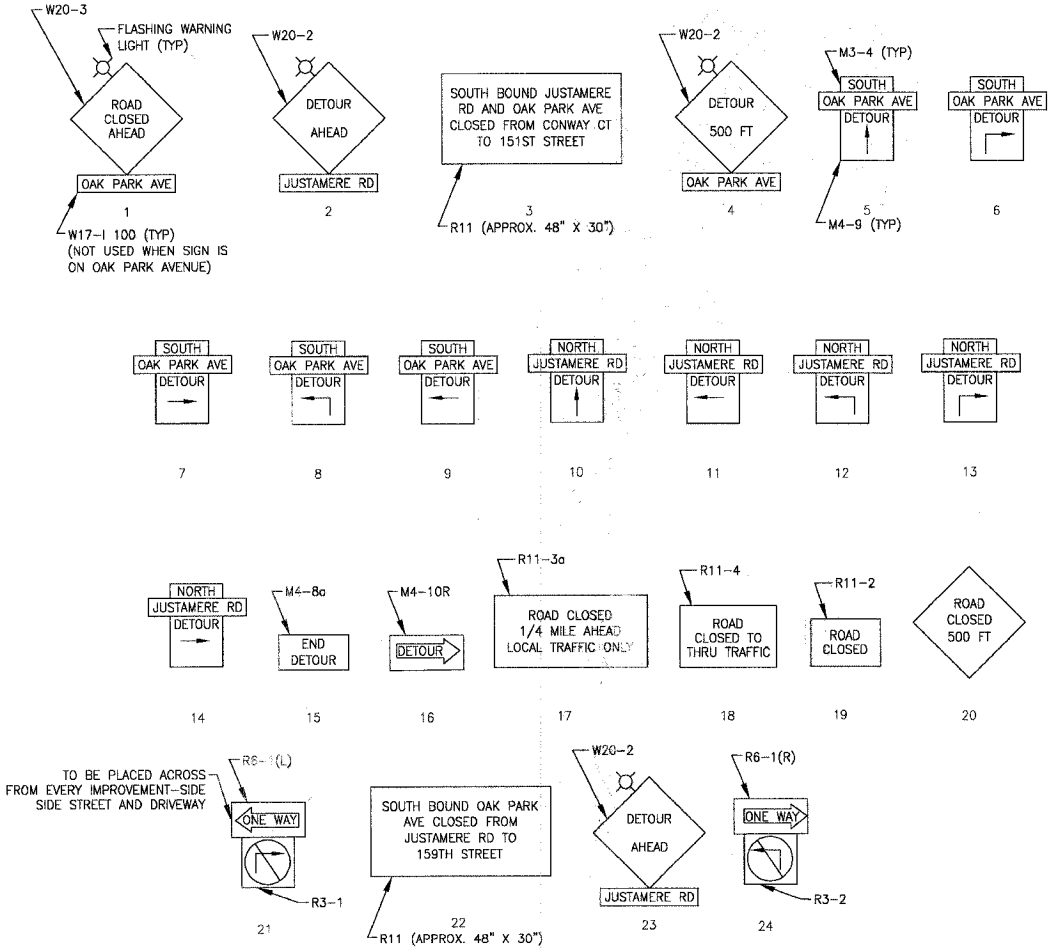


**SUGGESTED SEQUENCE OF CONSTRUCTION STAGE 2**

1. INSTALL TEMPORARY TRAFFIC SIGNALS.
2. PROVIDE TRAFFIC CONTROL AND PROTECTION. CONSTRUCTION OPERATIONS INVOLVING THE TEMPORARY CLOSURE OF ROADS SHALL NOT BEGIN WITHOUT AT LEAST THREE DAYS PRIOR NOTICE TO THE CITY BY THE CONTRACTOR. NORTHBOUND TRAFFIC SHALL REMAIN OPEN; SOUTHBOUND TRAFFIC SHALL BE DETOURED.
2. ASSURE ALL NECESSARY EROSION CONTROL IS IN PLACE.
3. CONSTRUCT MAINLINE, OUTLET, AND HALF OF LATERAL STORM SEWER, AND WEST PAVEMENT PATCHING AND WIDENING IMPROVEMENTS.

**DETOUR SIGN DETAILS**

(SEE LOCAL DETOUR PLAN FOR LOCATION)  
NOTE: W17-1 100 ROAD NAME SIGN NOT USED WHEN ON CLOSURE ROUTE



\B:\wfa\sw\BFA\OAK\20146\Draw\20146-DETOUR-MAP.dwg  
 Plot Date: 05/24/05 7:45:53 AM  
 Copyright © 2004 by Baxter & Woodman, Inc.  
 State of Illinois - Professional Design Firm  
 License No. - 164-001121 - Expires 4-30-05

CONSULTANT	REV. NO.	DATE	DESCRIPTION
	1	4-28-06	PER CITY AND COOK COUNTY COMMENTS

\* - REFER TO EQUIPMENT MANUFACTURER'S SHOP DRAWINGS

**BAKTER & WOODMAN**  
Consulting Engineers

**Baxter & Woodman**  
Crystal Lake, Illinois 815.459.1260  
Burlington, Wisconsin 262.763.7834  
Mokena, Illinois 708.478.2090  
DeKalb, Illinois 815.787.3111  
Caryville, Illinois 947.223.5088  
Rockford, Illinois 815.488.1551  
Plazafield, Illinois 815.609.7425

**CITY OF OAK FOREST, ILLINOIS**  
**OAK PARK AVENUE PROJECT**

**MAINTENANCE OF TRAFFIC**  
**TEMPORARY DETOUR**  
**STAGE 2**

DESIGNED BY	NJP	SCALE	NONE
DRAWN BY	NJP	PROJECT NO.	020146
CHECKED BY	NJP	SHEET NO.	
DATE	1-20-05		
			<b>21A OF 116</b>