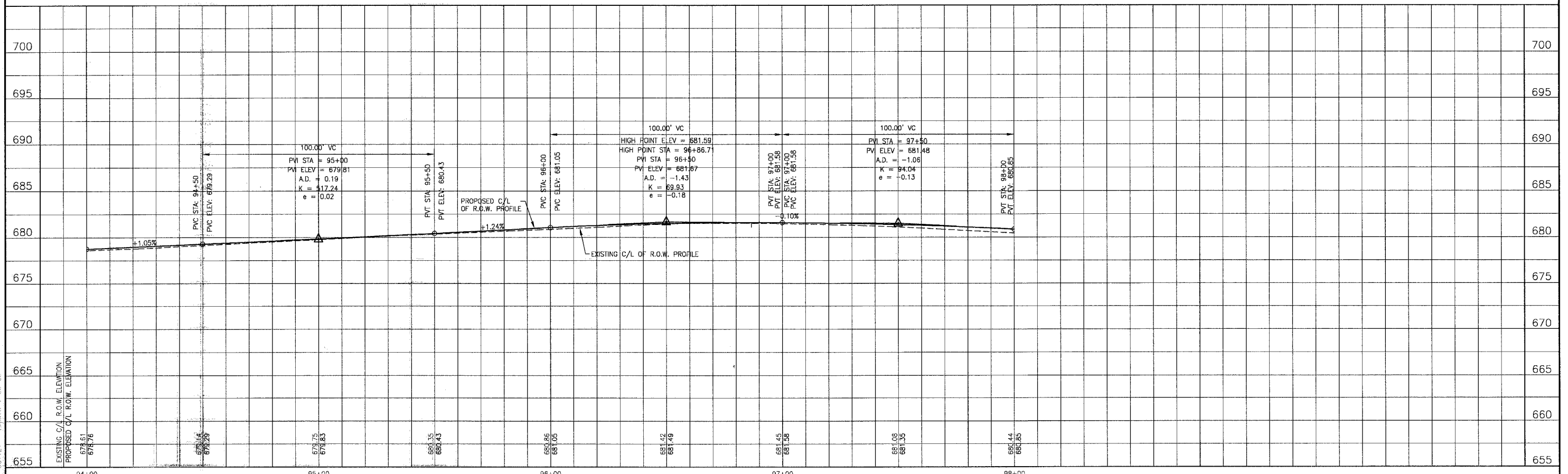


CURVE DATA	
CURVE NO.	C-1
RADIUS	200.00'
LENGTH	185.19'
TANGENT LENGTH	99.83'
CHORD LENGTH	178.64'
BEARING	S27°52'07" W
DELTA	53°03'06"
PC STA.	95+82.72
PT STA.	96+75.32
PT STA.	97+67.91
SUPERELEVATION	4%
	95+00 TO 98+00
TRANSITIONS	94+00 TO 95+00
	98+00 TO 99+00

NOTE:
1. SEE SHT. NO. 53 FOR DRAINAGE & UTILITY INFORMATION.

OAK PARK AVENUE



I:\CADD\2010\146\Drawings\20146-OPRK-OPRF.dwg
 Plotted: 4-27-06 @ 341pm By: 231udc
 Copyright ©2004, by Baxter & Woodman, Inc.
 State of Illinois - Professional Design Firm
 License No. 184-001121 Expires 4-30-06

CONSULTANTS	REV. NO.	DATE	DESCRIPTION
	1	4-28-06	PER 100' AND COOK COUNTY COMMENTS

* - REFER TO EQUIPMENT MANUFACTURER'S SHOP DRAWINGS

Baxter & Woodman
 Crystal Lake, Illinois 815.459.1200
 Burlington, Wisconsin 262.763.7834
 Mokena, Illinois 708.478.2090
 DeKalb, Illinois 815.707.2111
 Chicago, Illinois 847.233.5088
 Rockford, Illinois 815.489.1551
 Plainfield, Illinois 815.609.7425

CITY OF OAK FOREST, ILLINOIS
OAK PARK AVENUE PROJECT

OAK PARK AVENUE
STA. 94+00 TO STA. 98+00
GEOMETRIC PLAN

DESIGNED BY NJP	SCALE VERT: 1"=5' HORIZ: 1"=20'
DRAWN BY UKB	PROJECT NO. 020146
CHECKED BY NJP	SHEET NO.
DATE 1-20-05	35 OF 116