

**MANHOLES**

ST-MH 5  
MANHOLE, TY A, TY 1 F&G, CL  
7' DIA.  
STA. 32+12, 13' LT.  
RIM = 726.40  
INV. = 722.29 15" NW  
INV. = 722.29 19"30" S, N & E  
INV. = 722.29 12" SW

ST-MH 6  
MANHOLE, TY A, TY 1 F&G, CL  
5' DIA.  
STA. 33+00, 13' LT.  
RIM = 726.24  
INV. = 722.47 19"30" S & N  
INV. = 722.58 12" W

ST-MH 7  
MANHOLE, TY A, TY 1 F&G, CL  
4' DIA.  
STA. 34+02, 13' LT.  
RIM = 726.19  
INV. = 722.92 12" S  
INV. = 722.92 12" E  
INV. = 722.92 12" W

PIPE CULVERT REMOVAL,  
18" - 31 L.F.  
T.B.F. = 6.8 C.Y.

PIPE CULVERT REMOVAL,  
18" - 61 L.F.  
T.B.F. = 13.3 C.Y.  
2x2 box culvert

PIPE CULVERT REMOVAL,  
15" - 32 L.F.  
T.B.F. = 10.2 C.Y.

**INLETS**

ST-IN 5  
INLET, TY A, TY 1 F&G, OL  
STA. 31+59 32' LT.  
RIM = 725.95  
INV. 723.70 12" E

ST-IN 6  
INLET, TY A, TY 8 F&G  
STA. 31+91 62' LT.  
RIM = 724.66  
INV. 723.16 12" N

ST-IN 7  
INLET, TY A, TY 8 F&G  
STA. 34+36 38' LT.  
RIM = 725.75  
INV. 724.25 12" SE

ST-CB 10  
CATCH BASIN, TY A, TY 24 F&G  
4' DIA.  
STA. 31+96 34.8' LT.  
EP = 725.75  
INV. 723.08 12" SW  
722.56 12" NE

ST-CB 11  
CATCH BASIN, TY A, TY 24 F&G  
5' DIA.  
STA. 32+12 18' RT.  
EP = 725.99  
INV. 722.07 19"30" W & SE

ST-CB 12  
CATCH BASIN, TY A, TY 8 F&G  
4' DIA.  
STA. 32+41 62' LT.  
RIM = 724.40  
INV. 722.36 15" E  
722.63 12" S

ST-CB 13  
CATCH BASIN, TY A, TY 24 F&G  
4' DIA.  
STA. 32+36 37.3' LT.  
EP = 725.72  
INV. 722.33 12" W & SE

ST-CB 14  
CATCH BASIN, TY C, TY 8 F&G  
2' DIA.  
STA. 33+00 35' LT.  
RIM = 724.80  
INV. 722.80 12" E  
723.00 8" NW

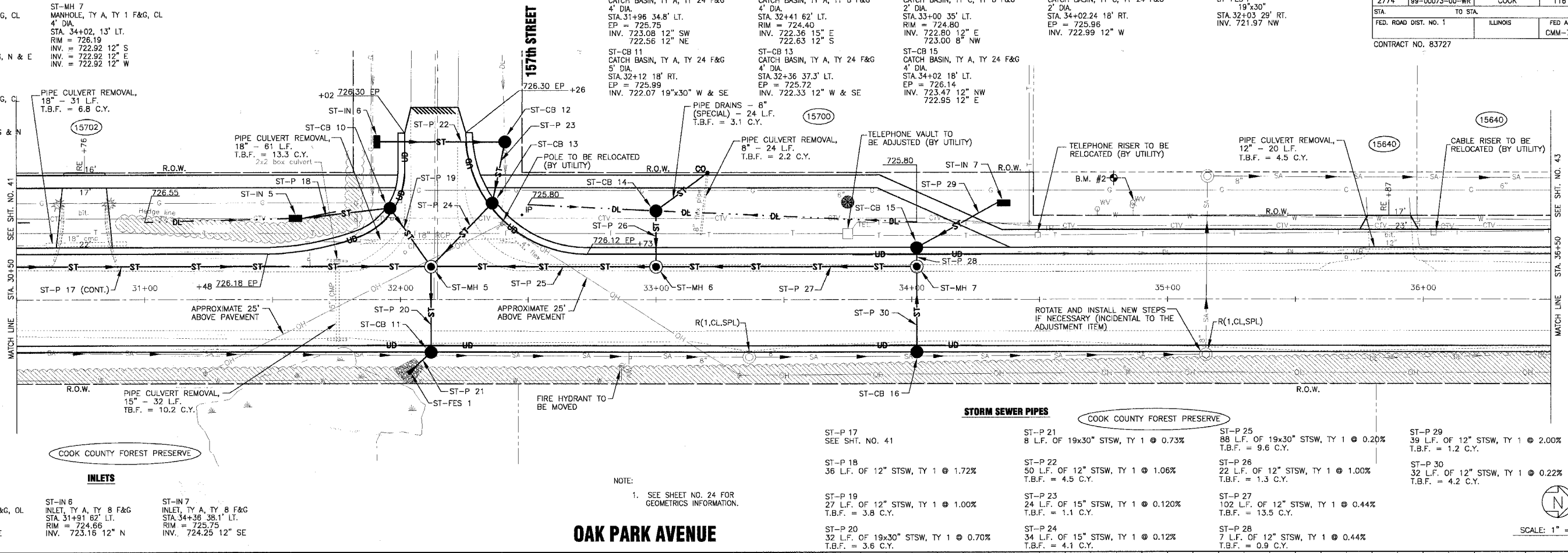
ST-CB 15  
CATCH BASIN, TY A, TY 24 F&G  
4' DIA.  
STA. 34+02 18' LT.  
EP = 726.14  
INV. 723.47 12" NW  
722.95 12" E

ST-CB 16  
CATCH BASIN, TY C, TY 24 F&G  
2' DIA.  
STA. 34+02.24 18' RT.  
EP = 725.96  
INV. 722.99 12" W

**FLARED END SECTION**

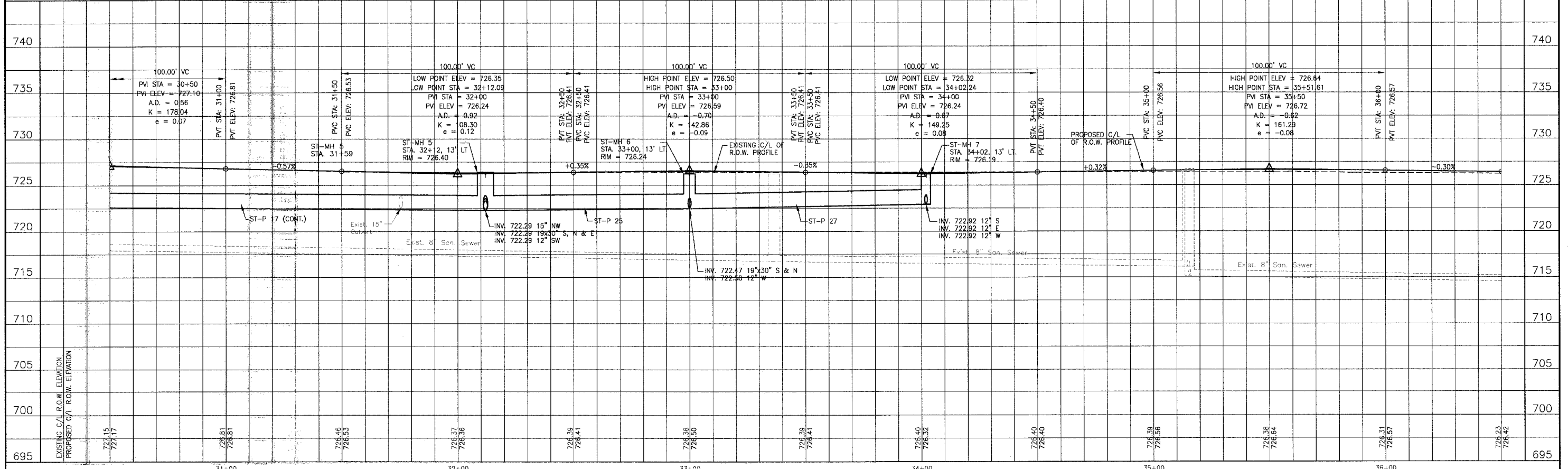
ST-FES 1  
19"30"  
STA. 32+03 29' RT.  
INV. 721.97 NW

F.A.U. ROUTE NO.	SECTION	COUNTY	TOTAL SHEETS	SHEET NO.
2774	99-00073-00-WR	COOK	116	42
STA.	TO STA.	ILLINOIS	FED AID PROJECT	
FED. ROAD DIST. NO. 1			CMM-7003 (750)	
CONTRACT NO. 83727				



NOTE:  
1. SEE SHEET NO. 24 FOR GEOMETRICS INFORMATION.

**OAK PARK AVENUE**



REV.	NO.	DATE	DESCRIPTION
1	A-28	05/25/04	AND COOK COUNTY COMMENTS

\* REFER TO EQUIPMENT MANUFACTURER'S SHOP DRAWINGS

**BAXTER & WOODMAN**  
Consulting Engineers

**Baxter & Woodman**  
Crystal Lake, Illinois 815.439.1260  
Durlington, Wisconsin 262.763.7831  
Mokona, Illinois 708.478.2090  
DeKalb, Illinois 815.787.3111  
Crystal Lake, Illinois 847.223.5088  
Rockford, Illinois 815.489.1551  
Plainfield, Illinois 815.609.7425

**CITY OF OAK FOREST, ILLINOIS**  
**OAK PARK AVENUE PROJECT**

**OAK PARK AVENUE**  
**STA. 30+50 TO STA. 36+50**  
**DRAINAGE AND UTILITY PLAN**

DESIGNED BY: NJP  
DRAWN BY: UKB  
CHECKED BY: SHELY  
DATE: 1-20-05

SCALE: VERT: 1"=5'  
HORIZ: 1"=20'

PROJECT NO: 020146  
SHEET NO: 42 OF 116

C:\Land Projects\2004\WOKENA-DWG\OAKFF\020146\DWGS\20146-04PRK-DPRF.dwg  
 Plotted: 4-26-05 @ 12:26pm By: 231ukb  
 Copyright © 2004, by Baxter & Woodman, Inc.  
 State of Illinois Professional Design Firm  
 License No. 19-00121 - Expires 4-30-05