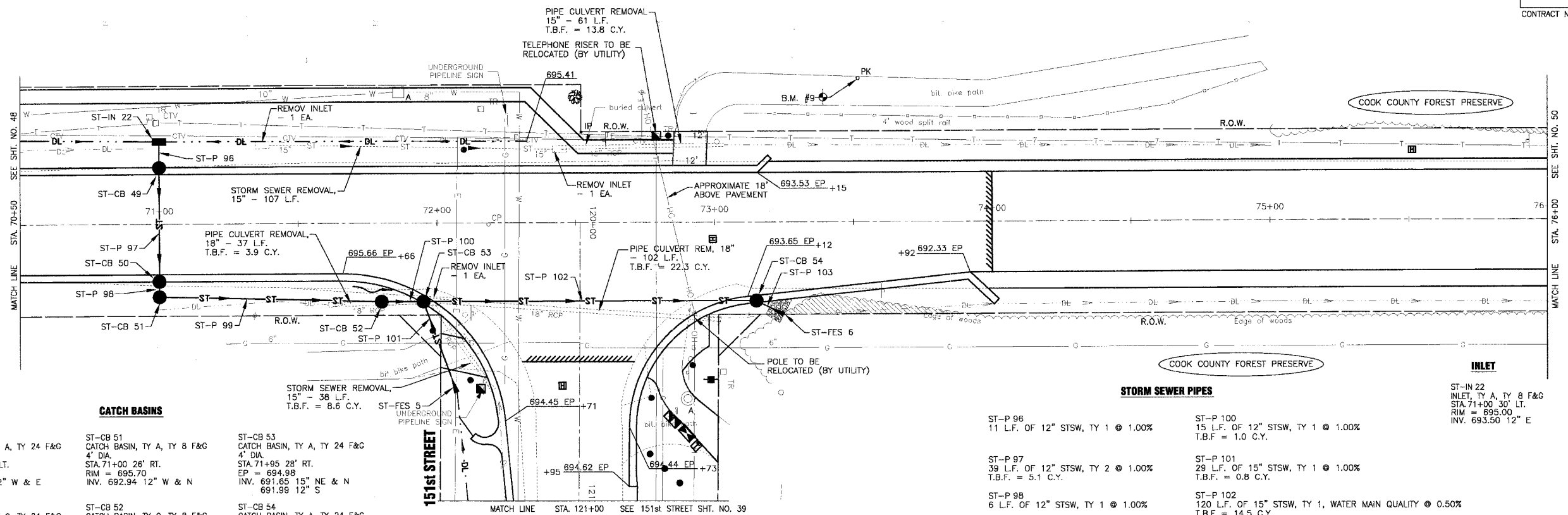




SCALE: 1" = 20'

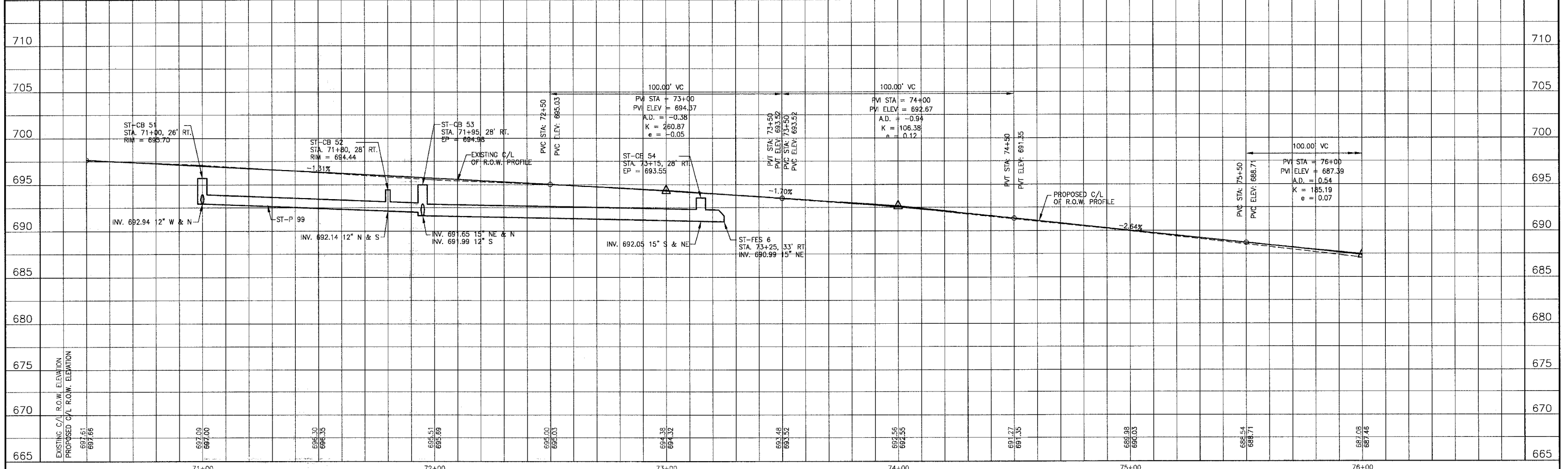


- CATCH BASINS**
- ST-CB 49
CATCH BASIN, TY A, TY 24 F&G
4" DIA.
STA. 71+00 18' LT.
EP = 696.46
INV. 693.39 12" W & E
 - ST-CB 50
CATCH BASIN, TY C, TY 24 F&G
2" DIA.
STA. 71+00 18' RT.
EP = 696.64
INV. 693.00 12" E & W
 - ST-CB 51
CATCH BASIN, TY A, TY 8 F&G
4" DIA.
STA. 71+00 26' RT.
RIM = 695.70
INV. 692.94 12" W & N
 - ST-CB 52
CATCH BASIN, TY C, TY 8 F&G
2" DIA.
STA. 71+80 28' RT.
RIM = 694.44
INV. 692.14 12" N & S
 - ST-CB 53
CATCH BASIN, TY A, TY 24 F&G
4" DIA.
STA. 71+95 28' RT.
EP = 694.98
INV. 691.65 15" NE & N
691.99 12" S
 - ST-CB 54
CATCH BASIN, TY A, TY 24 F&G
4" DIA.
STA. 73+15 28' RT.
EP = 693.55
INV. 691.05 15" S & NE

- STORM SEWER PIPES**
- ST-P 96
11 L.F. OF 12" STSW, TY 1 @ 1.00%
 - ST-P 97
39 L.F. OF 12" STSW, TY 2 @ 1.00%
T.B.F. = 5.1 C.Y.
 - ST-P 98
6 L.F. OF 12" STSW, TY 1 @ 1.00%
 - ST-P 99
80 L.F. OF 12" STSW, TY 1 @ 1.00%
 - ST-P 100
15 L.F. OF 12" STSW, TY 1 @ 1.00%
T.B.F. = 1.0 C.Y.
 - ST-P 101
29 L.F. OF 15" STSW, TY 1 @ 1.00%
T.B.F. = 0.8 C.Y.
 - ST-P 102
120 L.F. OF 15" STSW, TY 1, WATER MAIN QUALITY @ 0.50%
T.B.F. = 14.5 C.Y.
 - ST-P 103
5 L.F. OF 15" STSW, TY 1 @ 0.50%
T.B.F. = 0.6 C.Y.

- INLET**
- ST-IN 22
INLET, TY A, TY 8 F&G
STA. 71+00 30' LT.
RIM = 695.00
INV. 693.50 12" E
- FLARED END SECTIONS**
- ST-FES 5
RCP 15"
STA. 72+07 61' RT.
INV. 692.00
 - ST-FES 6
RCP 15"
STA. 73+25 33' RT.
INV. 690.99
- NOTE:
1. SEE SHEET NO. 31 FOR GEOMETRICS INFORMATION.

OAK PARK AVENUE



REV. NO.	DATE	DESCRIPTION
1	4-28-06	PER IDOT AND COOK COUNTY COMMENTS

CONSULTANTS	REV. NO.	DATE	DESCRIPTION
	1	4-28-06	PER IDOT AND COOK COUNTY COMMENTS

BAXTER & WOODMAN
Consulting Engineers

Baxter & Woodman
Crystal Lake, Illinois 815.459.1260
Durlington, Wisconsin 262.763.7031
Mokena, Illinois 708.478.5090
DeKalb, Illinois 815.787.3111
Garylake, Illinois 847.233.5988
Rockford, Illinois 815.489.1551
Plainfield, Illinois 815.609.7425

CITY OF OAK FOREST, ILLINOIS
OAK PARK AVENUE PROJECT

OAK PARK AVENUE
STA. 70+50 TO STA. 76+00
DRAINAGE AND UTILITY PLAN

DESIGNED BY: NJP
DRAWN BY: UKB
CHECKED BY: NJP
DATE: 1-20-05

SCALE: VERT: 1"=5'
HORIZ: 1"=20'

PROJECT NO.: 020146
SHEET NO.: 49 OF 116

I:\OAK\2006\Draws\20146-CPRK-DPRF.dwg
 Plotted: 4-30-06 @ 9:31 pm By: 231ukb
 Copyright © 2004, By: Baxter & Woodman, Inc.
 State of Illinois - Professional Design Firm
 License No. 184-001121 - Expires 4-30-05