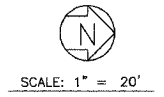


| F.A.U. ROUTE NO. | SECTION | COUNTY | TOTAL SHEETS | SHEET NO. |
|--------------------|----------------|----------|--------------------------------|-----------|
| 2774 | 99-00073-00-WR | COOK | 116 | 56 |
| STA. | TO STA. | | FED. ROAD DIST. NO. 1 | |
| | | ILLINOIS | FED AID PROJECT CMM-7003 (750) | |
| CONTRACT NO. 83727 | | | | |



STORM SEWER PIPES

- ST-P 105
SEE OAK PARK AVE/147TH ST. SHT. NO.
- ST-P 108
237 L.F. OF 12" STSW, TY 1 @ 2.0%
T.B.F. = 14.6 C.Y.
- ST-P 109
10 L.F. OF 12" STSW, TY 1 @ 9.6%
T.B.F. = 0.9 C.Y.
- ST-P 110
89 L.F. OF 12" STSW, TY 1 @ 1.5%
T.B.F. = 4.6 C.Y.
- ST-P 111
9 L.F. OF 10" STSW, TY 1 @ 2.0%
T.B.F. = 1.2 C.Y.

FLARED END SECTION

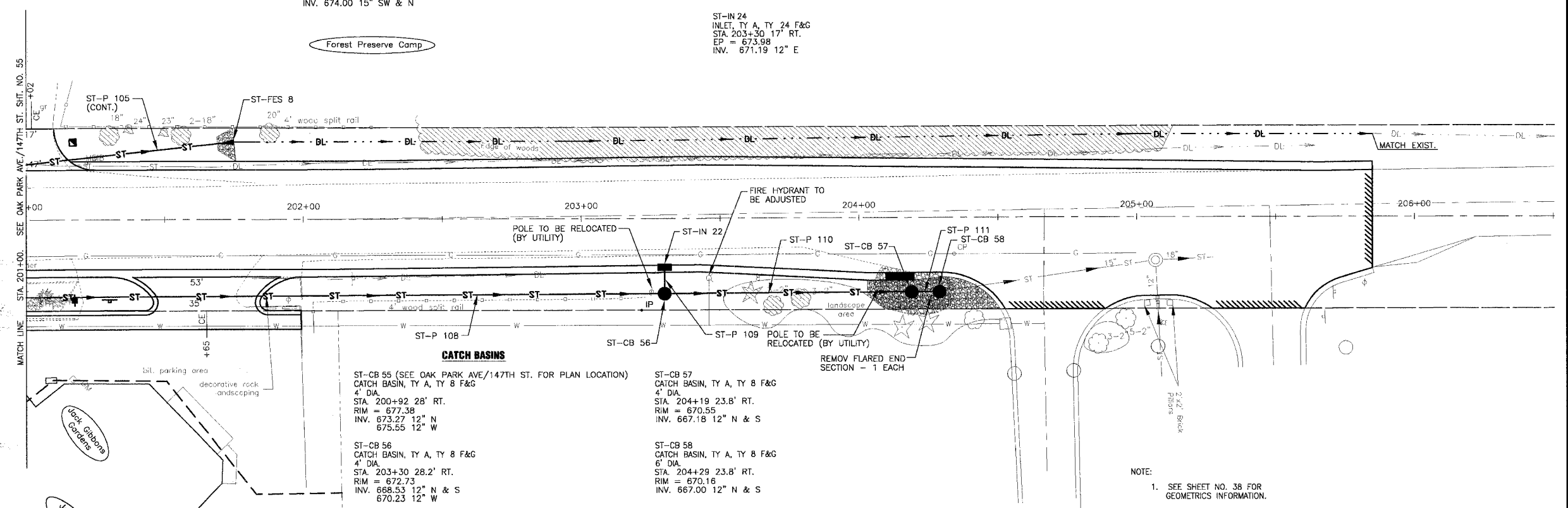
- ST-FES 8
RCP 15"
STA. 201+75 28' LT.
INV. 673.79

MANHOLE

- ST-MH 25 (SEE OAK PARK AVE/147TH ST. FOR PLAN LOCATION)
MANHOLE, TY A, TY 1 FR, CL
4" DIA.
STA. 200+19 11' LT.
RIM = 679.99
INV. 674.00 15" SW & N

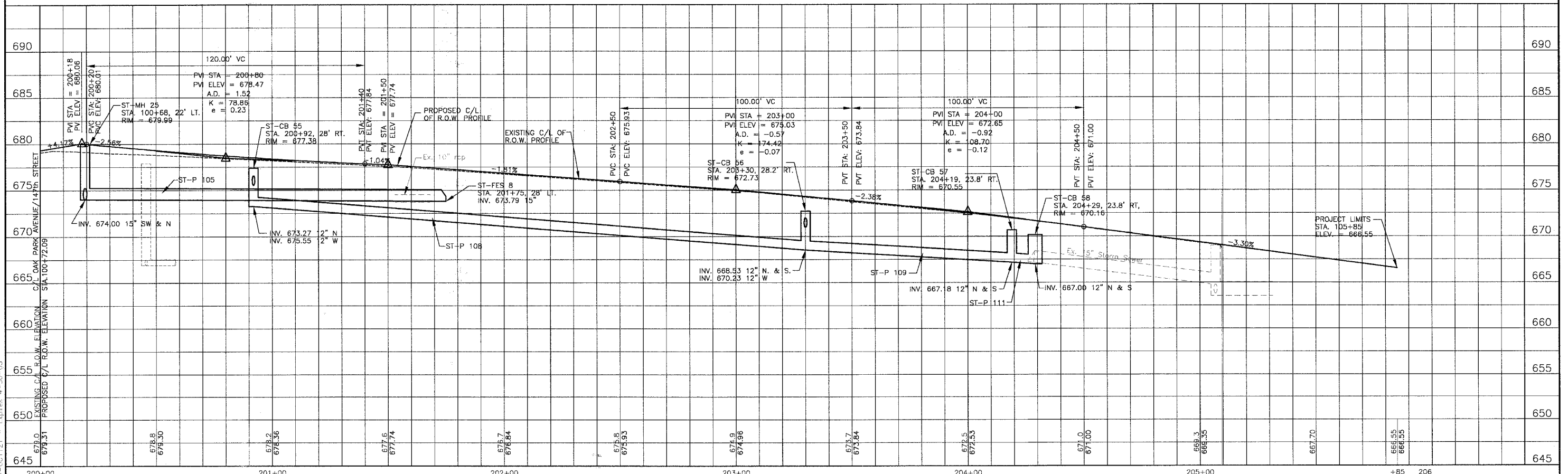
INLETS

- ST-IN 23 (SEE OAK PARK AVE/147TH ST. FOR PLAN LOCATION)
INLET, TY A, TY 24 F&G
STA. 200+92 18.8' RT.
EP = 678.13
INV. 675.63 12" E
- ST-IN 24
INLET, TY A, TY 24 F&G
STA. 203+30 17' RT.
EP = 673.98
INV. 671.19 12" E



JUSTAMERE ROAD

NOTE:
1. SEE SHEET NO. 38 FOR GEOMETRICS INFORMATION.



I:\OAKF\020146\Drawings\JUSTMERE_SRF.dwg
 Plotted: 4-28-06 @ 12:10pm By: 235 jhb
 Copyright © 2004, by Baxter & Woodman, Inc.
 State of Illinois - Professional Design Firm
 License No. - 184-001121 - Expires 4-30-05

| | | | | | |
|--|--|--|---|--|---|
| CONSULTANTS DATE: 4-28-06 DESCRIPTION: PER IDOT AND COOK COUNTY COMMENTS | | <p>Baxter & Woodman Crystal Lake, Illinois 815.459.1860 Burlington, Wisconsin 262.763.7834 Mokena, Illinois 708.478.2090 DeKalb, Illinois 815.767.2111 Graylake, Illinois 815.223.6988 Rockford, Illinois 815.489.1551 Plainfield, Illinois 815.609.7425</p> | <p align="center">CITY OF OAK FOREST, ILLINOIS OAK PARK AVENUE PROJECT</p> | <p align="center">JUSTAMERE ROAD STA. 200+00 TO STA. 205+85 DRAINAGE & UTILITY PLAN</p> | DESIGNED BY: NJP DRAWN BY: UKB CHECKED BY: NJP DATE: 1-20-05 SCALE: VERT: 1"=5' HORIZ: 1"=20' PROJECT NO.: 020146 SHEET NO.: 56 OF 116 |
|--|--|--|---|--|---|