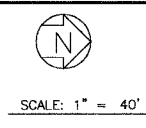
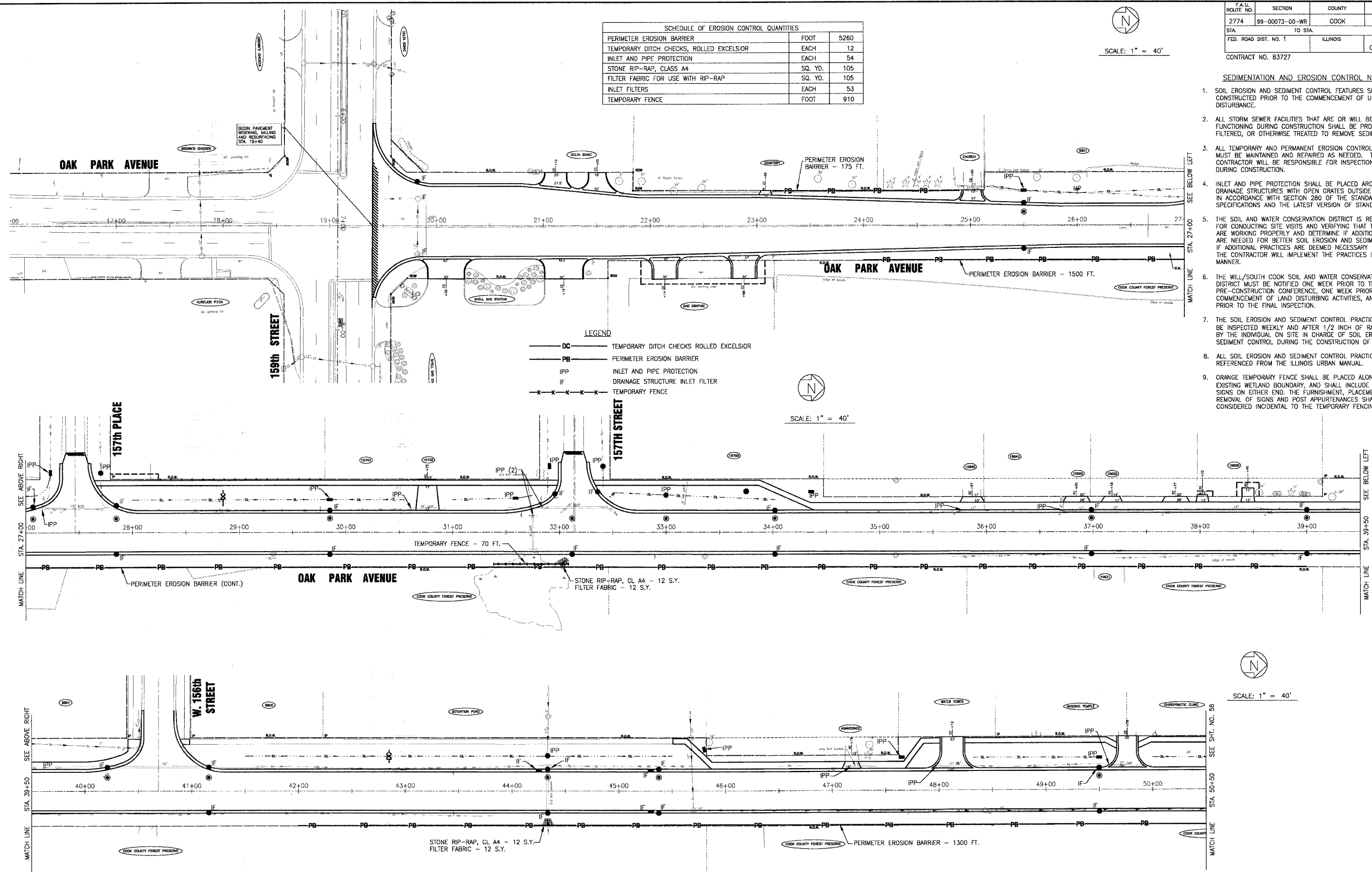


F.A.D. ROUTE NO.	SECTION	COUNTY	TOTAL SHEETS	SHEET NO.
2774	99-00073-00-WR	COOK	116	57
STA.	TO STA.		FED. ROAD DIST. NO. 1	ILLINOIS
			FED AID PROJECT CMM-7003 (750)	
CONTRACT NO. 83727				



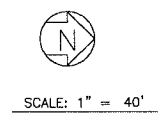
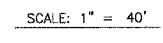
SCHEDULE OF EROSION CONTROL QUANTITIES		
PERIMETER EROSION BARRIER	FOOT	5260
TEMPORARY DITCH CHECKS, ROLLED EXCELSIOR	EACH	12
INLET AND PIPE PROTECTION	EACH	54
STONE RIP-RAP, CLASS A4	SQ. YD.	105
FILTER FABRIC FOR USE WITH RIP-RAP	SQ. YD.	105
INLET FILTERS	EACH	53
TEMPORARY FENCE	FOOT	910

- SEDIMENTATION AND EROSION CONTROL NOTES**
- SOIL EROSION AND SEDIMENT CONTROL FEATURES SHALL BE CONSTRUCTED PRIOR TO THE COMMENCEMENT OF UPLAND DISTURBANCE.
  - ALL STORM SEWER FACILITIES THAT ARE OR WILL BE FUNCTIONING DURING CONSTRUCTION SHALL BE PROTECTED, FILTERED, OR OTHERWISE TREATED TO REMOVE SEDIMENT.
  - ALL TEMPORARY AND PERMANENT EROSION CONTROL MEASURES MUST BE MAINTAINED AND REPAIRED AS NEEDED. THE GENERAL CONTRACTOR WILL BE RESPONSIBLE FOR INSPECTION AND REPAIR DURING CONSTRUCTION.
  - INLET AND PIPE PROTECTION SHALL BE PLACED AROUND ALL DRAINAGE STRUCTURES WITH OPEN GRATES OUTSIDE BACK OF CURB IN ACCORDANCE WITH SECTION 280 OF THE STANDARD SPECIFICATIONS AND THE LATEST VERSION OF STANDARD 280001.
  - THE SOIL AND WATER CONSERVATION DISTRICT IS RESPONSIBLE FOR CONDUCTING SITE VISITS AND VERIFYING THAT THE PRACTICES ARE WORKING PROPERLY AND DETERMINE IF ADDITIONAL PRACTICES ARE NEEDED FOR BETTER SOIL EROSION AND SEDIMENT CONTROL. IF ADDITIONAL PRACTICES ARE DEEMED NECESSARY BY THE SWCD THE CONTRACTOR WILL IMPLEMENT THE PRACTICES IN A TIMELY MANNER.
  - THE WILL/SOUTH COOK SOIL AND WATER CONSERVATION DISTRICT MUST BE NOTIFIED ONE WEEK PRIOR TO THE PRE-CONSTRUCTION CONFERENCE, ONE WEEK PRIOR TO THE COMMENCEMENT OF LAND DISTURBING ACTIVITIES, AND ONE WEEK PRIOR TO THE FINAL INSPECTION.
  - THE SOIL EROSION AND SEDIMENT CONTROL PRACTICES WILL BE INSPECTED WEEKLY AND AFTER 1/2 INCH OF RAIN OR MORE BY THE INDIVIDUAL ON SITE IN CHARGE OF SOIL EROSION AND SEDIMENT CONTROL DURING THE CONSTRUCTION OF THE PROJECT.
  - ALL SOIL EROSION AND SEDIMENT CONTROL PRACTICES ARE REFERENCED FROM THE ILLINOIS URBAN MANUAL.
  - ORANGE TEMPORARY FENCE SHALL BE PLACED ALONG THE EXISTING WETLAND BOUNDARY, AND SHALL INCLUDE "NO INTRUSION" SIGNS ON EITHER END. THE FURNISHMENT, PLACEMENT, & ULTIMATE REMOVAL OF SIGNS AND POST APPURTENANCES SHALL BE CONSIDERED INCIDENTAL TO THE TEMPORARY FENCING ITEM.



**LEGEND**

— DC —	TEMPORARY DITCH CHECKS ROLLED EXCELSIOR
— PB —	PERIMETER EROSION BARRIER
— IPP —	INLET AND PIPE PROTECTION
— IF —	DRAINAGE STRUCTURE INLET FILTER
— X — X — X — X —	TEMPORARY FENCE



I:\CASEFILES\201146\Drawings\201146-EROS.cdw  
 Plotted: 4-27-08 @ 5:37pm By: 23146  
 Copyright ©2004, by Baxter & Woodman, Inc.  
 State of Illinois - Professional Design Firm  
 License No. - 154-001121 - Expires 4-30-05

CONSULTANTS	DATE	DESCRIPTION
BAXTER & WOODMAN	4-28-06	PER IDOT AND COOK COUNTY COMMENTS

\* - REFER TO EQUIPMENT MANUFACTURER'S SHOP DRAWINGS

**BAXTER & WOODMAN**  
 Consulting Engineers

Crystal Lake, Illinois 815.459.1260  
 Burlington, Wisconsin 262.763.7934  
 Mokena, Illinois 708.478.2090  
 DuRoi, Illinois 815.787.3111  
 Graylake, Illinois 815.228.5089  
 Rockford, Illinois 815.489.1551  
 Moline, Illinois 815.609.7425

**CITY OF OAK FOREST, ILLINOIS**  
**OAK PARK AVENUE PROJECT**

**TEMPORARY EROSION CONTROL PLAN**  
**OAK PARK AVENUE**  
**STA. 19+40 TO STA 50+50**

DESIGNED BY	NJP	SCALE	HORIZ: 1"=40'
DRAWN BY	UKB	PROJECT NO.	020146
CHECKED BY	NJP	SHEET NO.	57 OF 116
DATE	1-20-05		